

# ***From Information to Action: Lessons from NNIP***

**National Neighborhood Indicators Partnership**  
*Better Data. Better Decisions. Better Communities.*

Leah Hendey

Texas Economic and Demographic Association  
Annual Workshop  
May 17, 2013



1

## **National Neighborhood Indicators Partnership (NNIP)**



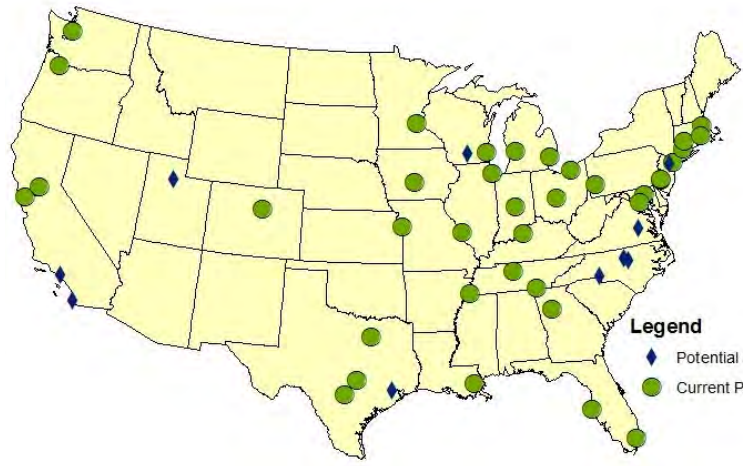
- Collaborative effort since 1995
  - Urban Institute & local partners; now 37 cities
  - All partners build and operate neighborhood level information systems using local data
  - Success based on:
    - Trusted and engaged institutions
    - Relevant and high-quality data
    - Mission to support use of data for local action

2

# Trusted and Engaged Institutions

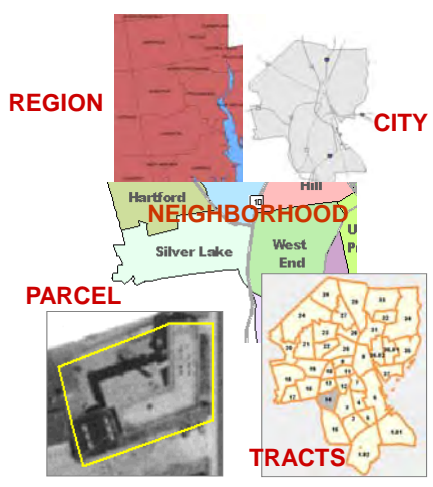


National Neighborhood Indicators Partners



**Legend**  
 ◆ Potential Partners  
 ● Current Partners

# Relevant and High-Quality Data



- Types of Data
- Education
  - Child care
  - Births, deaths
  - TANF, Food Stamps
  - Health
  - Crime
  - Property sales, prices
  - Foreclosures

## Mission: Data for Local Action



- “Democratize Information”
  - Facilitate the direct use of data by stakeholders
- Serve multiple audiences and purposes
  - But a central focus on strengthening and empowering low-income neighborhoods
- Use information to promote collaboration
  - Acts as a bridge among public agencies, nonprofits, businesses, resident groups

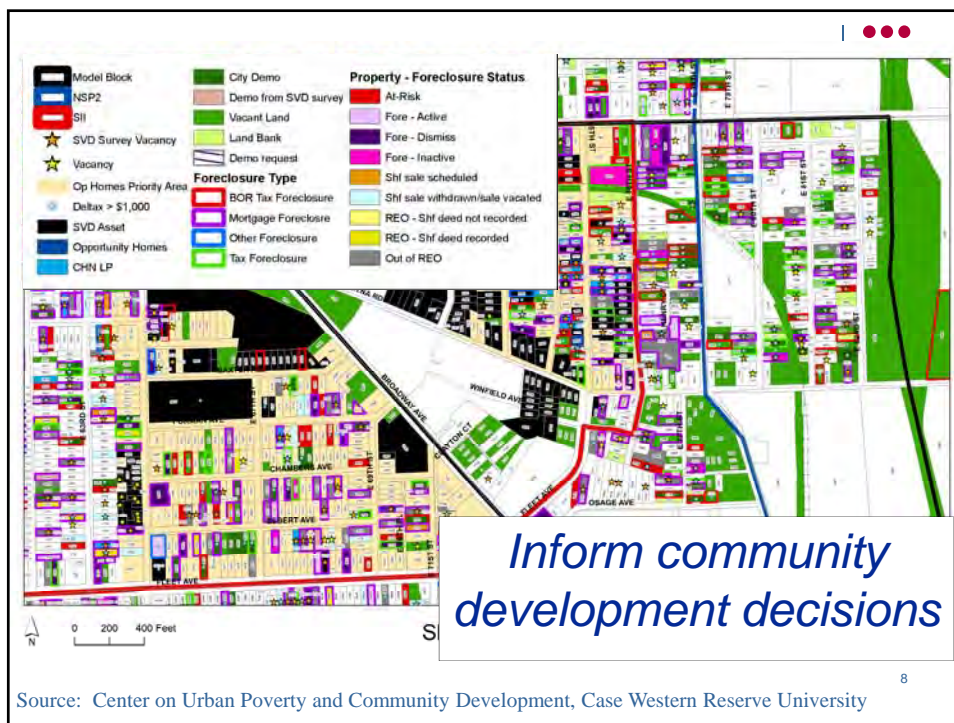
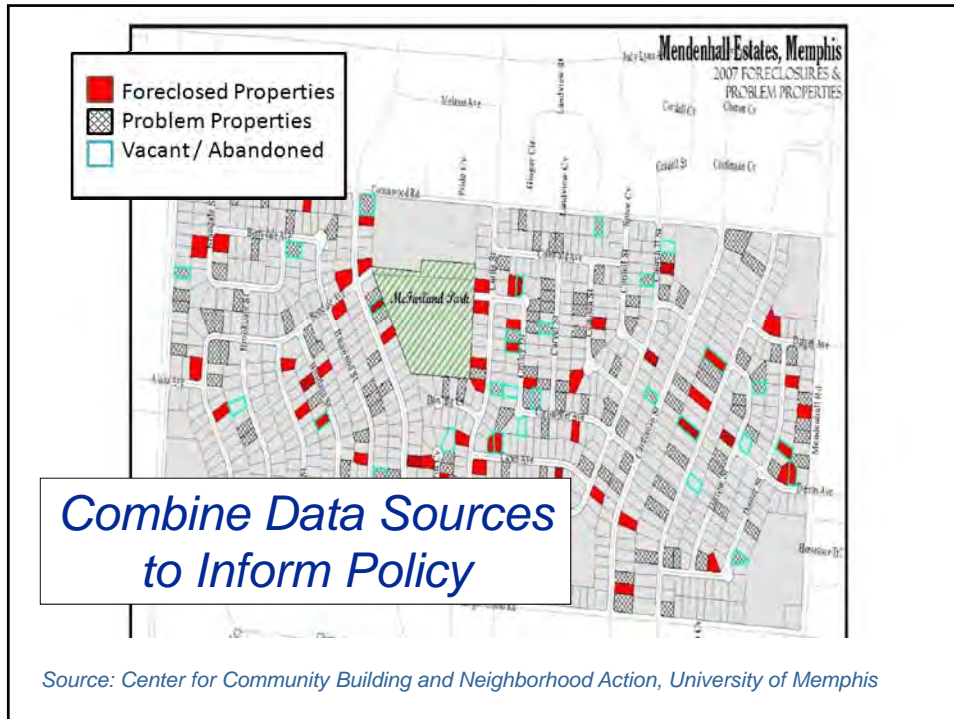
5

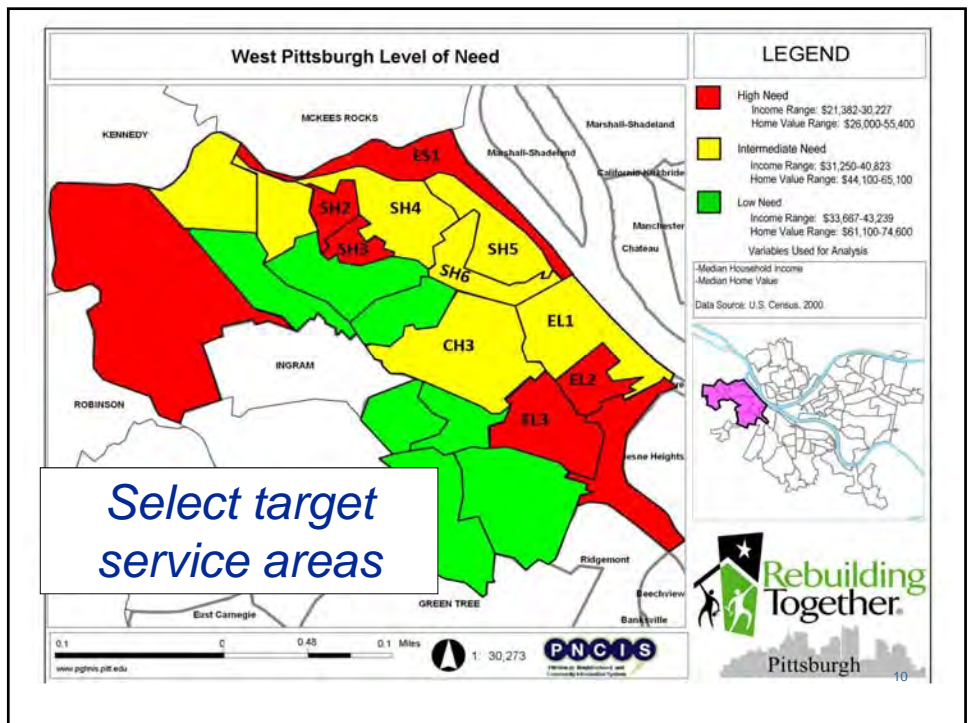
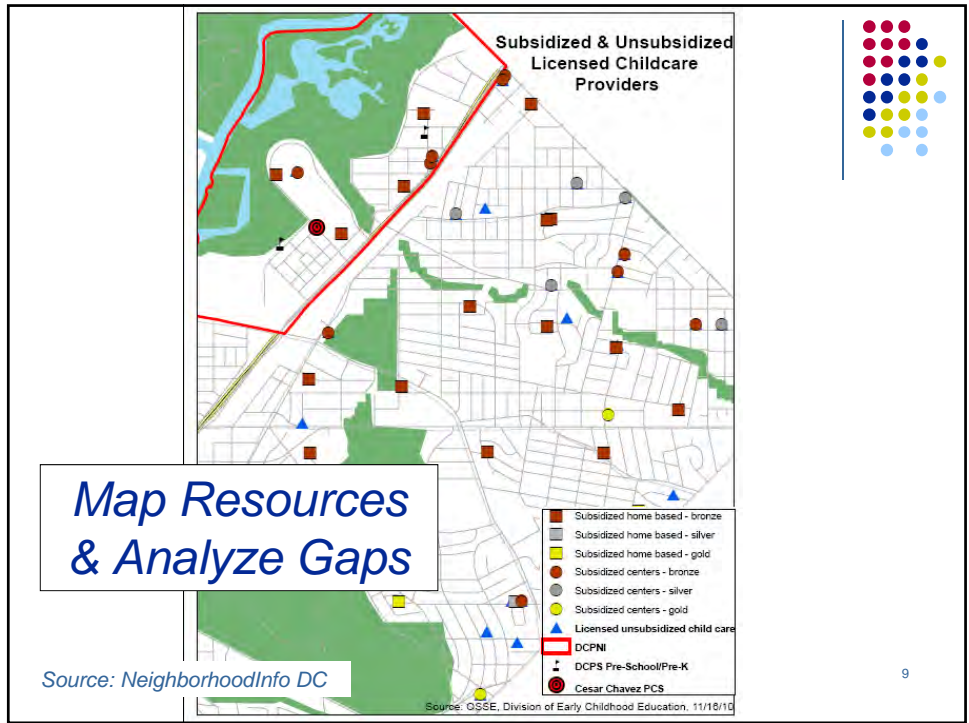
## NNIP Partner Activities



- Assemble, transform and disseminate data
- Apply the data to achieve impact
  - Assess and prioritize community needs
  - Support federally-funded neighborhood initiatives
  - Develop comprehensive community indicator projects
- Use data to strengthen civic life and governance
  - Enhance data capacity of local stakeholders
  - Building a culture of data access and informed actions

6







## Creating Sustainable Places



### EXAMPLES OF SUSTAINABILITY INDICATORS

ACTIONS	PLACES	OUTCOMES
Measure actions and activities promoted by Creating Sustainable Places	Measure improvements in centers and corridors based on CSP guiding principles	Measure regional change in triple-bottom-line categories
<b>REINVESTMENT</b> <ul style="list-style-type: none"> <li>Sq. ft. of commercial space renovated</li> <li>Housing units constructed/renovated</li> </ul>	<b>REINVESTMENT</b> <ul style="list-style-type: none"> <li>Change in property values</li> <li>Population and housing unit density</li> </ul>	<b>EQUITY (SOCIAL)</b> <ul style="list-style-type: none"> <li><b>EQUITY AND AFFORDABILITY</b> <ul style="list-style-type: none"> <li>Concentrated poverty and race</li> <li>Index of discrimination</li> </ul> </li> <li><b>EDUCATION, ARTS AND COMMUNITY</b> <ul style="list-style-type: none"> <li>3rd, 5th and 8th grade completion</li> <li>Degree of community connection participation</li> </ul> </li> <li><b>HEALTH AND SAFETY</b> <ul style="list-style-type: none"> <li>YPLL rate and distribution</li> <li>Obesity rates</li> </ul> </li> </ul>
<b>TRANSPORTATION CHOICE</b> <ul style="list-style-type: none"> <li>Transit service improvements</li> <li>Miles of Complete Streets</li> </ul>	<b>TRANSPORTATION CHOICE</b> <ul style="list-style-type: none"> <li>Modal split in trips</li> </ul>	<b>ENVIRONMENT</b> <ul style="list-style-type: none"> <li><b>NATURAL SYSTEMS</b> <ul style="list-style-type: none"> <li>Percent of population near parks trails</li> </ul> </li> <li><b>PLANNING &amp; DESIGN</b> <ul style="list-style-type: none"> <li>Percent of region under sustainable code framework</li> <li>Percent of population growth accommodated by redevelopment/infill</li> </ul> </li> </ul>
<b>HOUSING CHOICE</b> <ul style="list-style-type: none"> <li>Number of units constructed/renovated by type, target income</li> </ul>	<b>HOUSING CHOICE</b> <ul style="list-style-type: none"> <li>Distribution of housing types</li> <li>Distribution of housing price points</li> </ul>	
<b>ENERGY EFFICIENCY</b> <ul style="list-style-type: none"> <li>Number of structures weatherized</li> </ul>	<b>ENERGY EFFICIENCY</b> <ul style="list-style-type: none"> <li>Residential energy use per unit or sq. ft. employee</li> </ul>	
	type	

*Identify & Measure Program Outcomes*

Source: Mid-America Regional Council

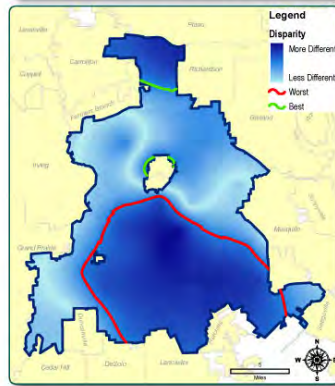


## ADDRESSING THE NORTH-SOUTH GAP IN DALLAS

## Understanding the Problem



### SAT Scores Persistently Lag Behind in Southern Dallas



Source: J. McDonald Williams Institute, 2006. "2006 Wholeness Index Summary Report."  
[http://thewilliamsinstitute.com/Portals/0/Wholeness/2006\\_Wholeness/Wholeness\\_Index\\_2006.pdf](http://thewilliamsinstitute.com/Portals/0/Wholeness/2006_Wholeness/Wholeness_Index_2006.pdf)

13

## Collaborate on Action Steps



- Leadership from the Dallas Morning News Editorial Board
  - Dialogue around disparities made a part of the 2007 mayoral election
- Southern Dallas Task Force
  - Action Plans for 10 neighborhoods
- Continued engagement by Dallas Morning News – need to understand and assemble data

14

# Collect More Data!

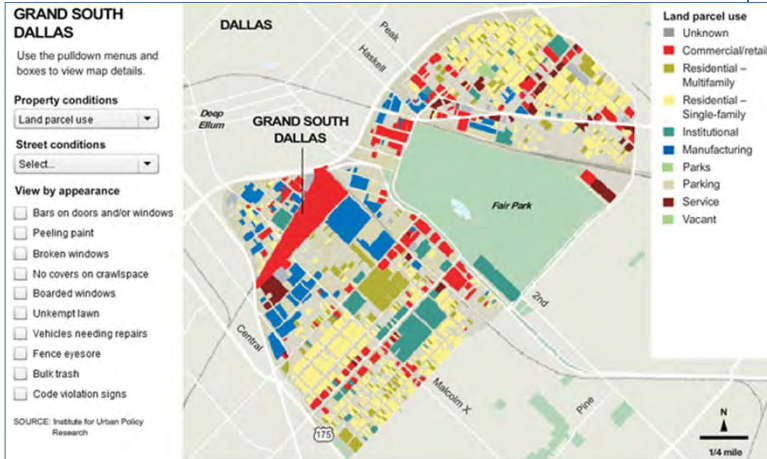
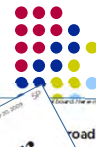


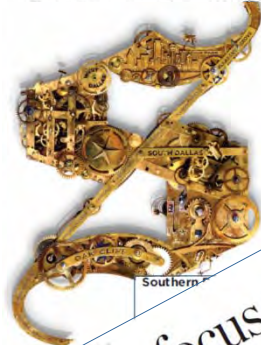
Image Source:  
Dallas Morning News

15

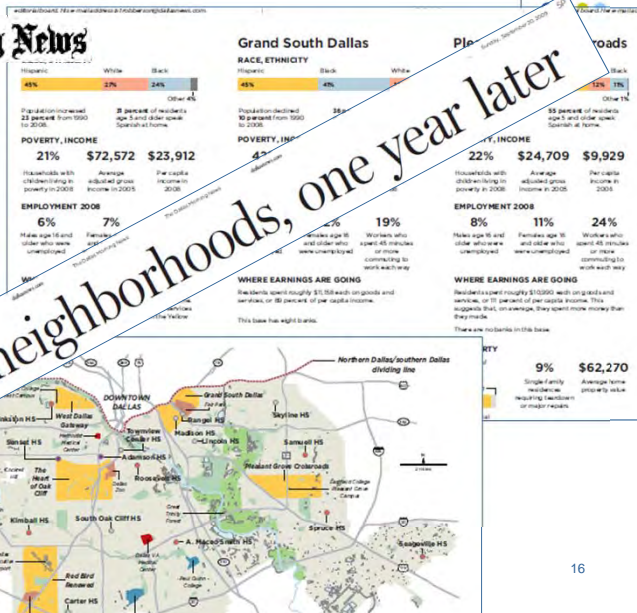
# Using Data to Focus Attention



## The Dallas Morning News



*Five focus neighborhoods, one year later*



Source:  
Dallas Morning News

16



# Continued Impact



## 10 DROPS IN THE BUCKET



We have devoted this space to spotlighting some of the persistent problems that cause stress for southern Dallas residents.

Progress might seem slow, as some of the addresses have been on this map month after month, with no ready fix evident. But we've pledged to be relentless, to continue to beat the drum about egregious code violations and dangerous properties until we see improvement.

So, we continue to shine a bright light on these relatively small issues that become big headaches for neglected neighborhoods. Ramshackle properties that had been in decline for years now have our attention, as well as that of code inspectors and city officials.

Each month, we highlight opportunities for improvement in southern Dallas. Click on the pins below for the latest updates for these drops in the bucket.

- 10 Drops: Editorials and columns  
- North-South Gap: A Tour of the Invisible City

**Need help in your neighborhood?**  
We're interested in the relatively small problems that cause big headaches in southern Dallas neighborhoods. Send your ideas for "drops in the bucket" to [southerndallas@dallasnews.com](mailto:southerndallas@dallasnews.com)



Source:  
Dallas Morning News

17

# Continued Impact



- 10 Goals
- EPIC Dallas (Economic Partners Investing in Communities)

18

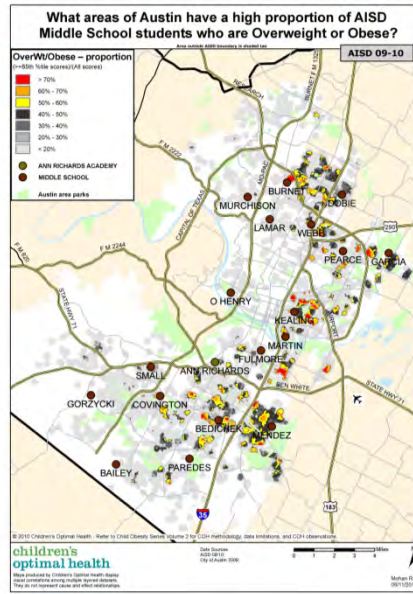
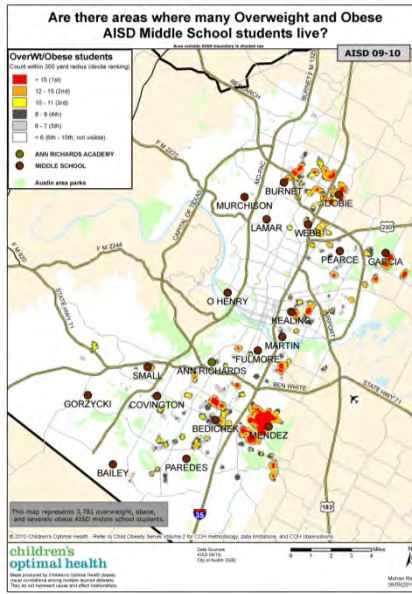


## children's optimal health

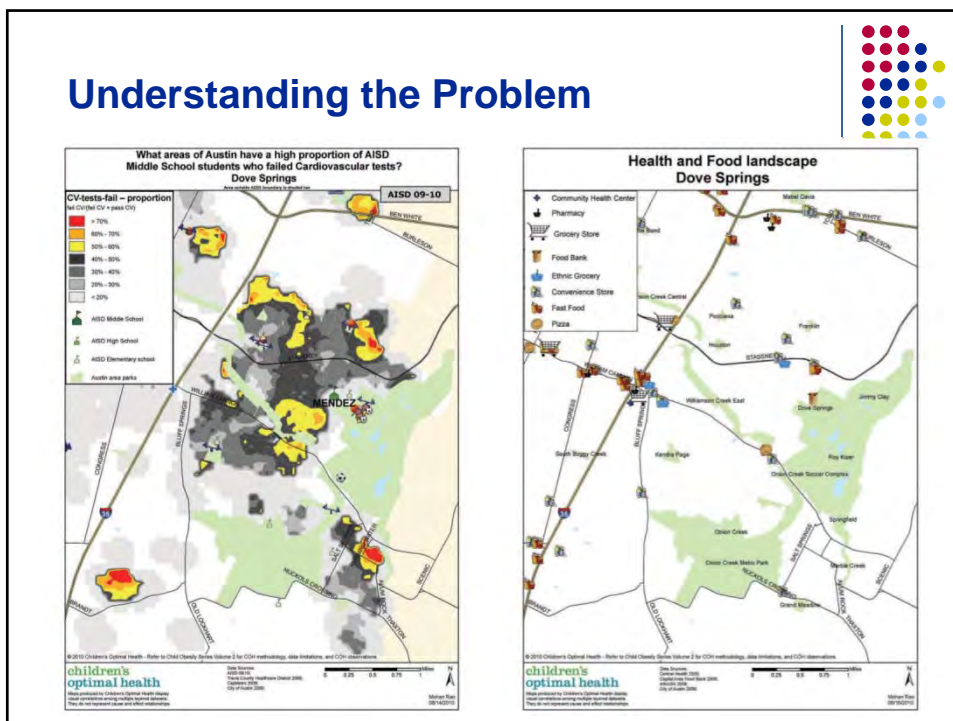
# EXPLORING CHILD OBESITY IN AUSTIN

19

## Understanding the Problem



## Understanding the Problem



## Operational & Policy Changes

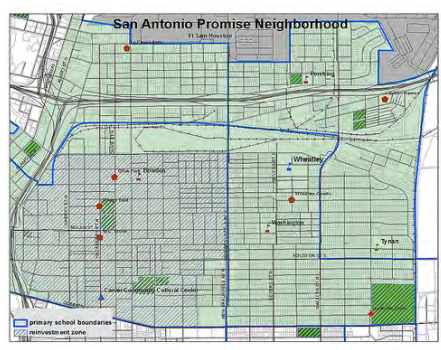


- Targeted allocation of resources by City and County to neighborhoods of highest need
- City planning to include sidewalks and hike/bike trails in targeted neighborhoods
- AISD School Board included student health as a core value
  - Improved physical education and health curriculum in schools
- Improved awareness and advocacy around importance of school recess



CI:NOW  
NOWTECH  
NOWDATA  
NOWCAST  
**SUPPORTING  
NEIGHBORHOOD INITIATIVES**

# Eastside Neighborhood in San Antonio



Sources: CI:NOW and  
NOWCastSA

## Lessons from NNIP



- Design indicators for action—not just to passively monitor trends.
- Develop indicators at the neighborhood level as well as the city or county as a whole.
- Use available indicators but recognize their inadequacies – don't discount local wisdom.

Source: Terry Bailey

25

## Lessons from NNIP



- Place the numbers in the context of images and stories about the issues you care about.
- Data can be used to bring stakeholders together to address issues from multiple angles and leverage resources.
- Data can help diffuse political agendas.

Source: Terry Bailey

26



My Dashboard Logout

**NNIP** NATIONAL NEIGHBORHOOD INDICATORS PARTNERSHIP

Home About NNIP Partners Activities Library Get Involved Data & Tech

**Featured Content**

**NNIP Partners Meeting Videos**

The NNIP Partners gathered at Portland State University in March 2012 to learn about regionalism, collective impact, new technologies, measuring disparity and opportunity, media strategies, and much more.

See the session videos... [Read More]

[www.NeighborhoodIndicators.org](http://www.NeighborhoodIndicators.org)

**Featured Partner >**

**Memphis**

Center for Community Building and

**Featured Issue >**

**Using Data to Help Children**

NNIP partners help to improve the well-being of

**Featured Activity >**

**Mapper Explores Healthy Housing in Providence**

<http://www.neighborhoodindicators.org/activities/issues>

Home > Issue Areas

**Issue Areas**

NNIP Partners make important contributions to their communities on a variety of issues. The pages below highlight and organize the work NNIP partners have done, bringing together activities, published products, and cross-site projects related to each topic. We'll list additional issue areas as our partners add new examples, so check back often.

If you are interested in topics not displayed here, use the site's general search box.

**Absenteeism**

Absenteeism is an important indicator of how well children will perform in school. A number of our partners are helping school districts understand chronic absenteeism in their communities. [read more]

**Affordable Housing**

Community groups and policy makers have expressed a strong interest in maintaining and improving the stock of affordable housing in NNIP communities. Our partners research and report on the availability of affordable housing, the costs and benefits of gentrification, rent control, and reflect more broadly on how access to affordable housing ... [read more]

**Children**

Many partners have focused efforts to help to improve the well-being of children in low-income neighborhoods. Project

# ***From Information to Action: Lessons from NNIP***

**National Neighborhood Indicators Partnership**  
***Better Data. Better Decisions. Better Communities.***

Leah Hendey

Texas Economic and Demographic Association  
Annual Workshop  
May 17, 2013

