

Defining, Tracking, and Displaying
Regional Equity Conditions: Two Approaches
from the Portland-Vancouver Metropolitan Region

Meg Merrick, Ph.D.

Institute of Portland Metropolitan Studies

Portland State University

merrickm@pdx.edu

Background

- Two indicators projects –
Regional Equity Atlas 2.0 and Greater Portland Pulse
- Same 4-county bi-state region
- PSU and Metro partners in both
- Both deeply concerned with social equity
- Both sought to utilize data visualization tools
- Two different results

Regional Equity Atlas Project

Metropolitan Portland's Geography of Opportunity.



**COALITION FOR A
LIVABLE FUTURE**



Metro | *Making a great place*

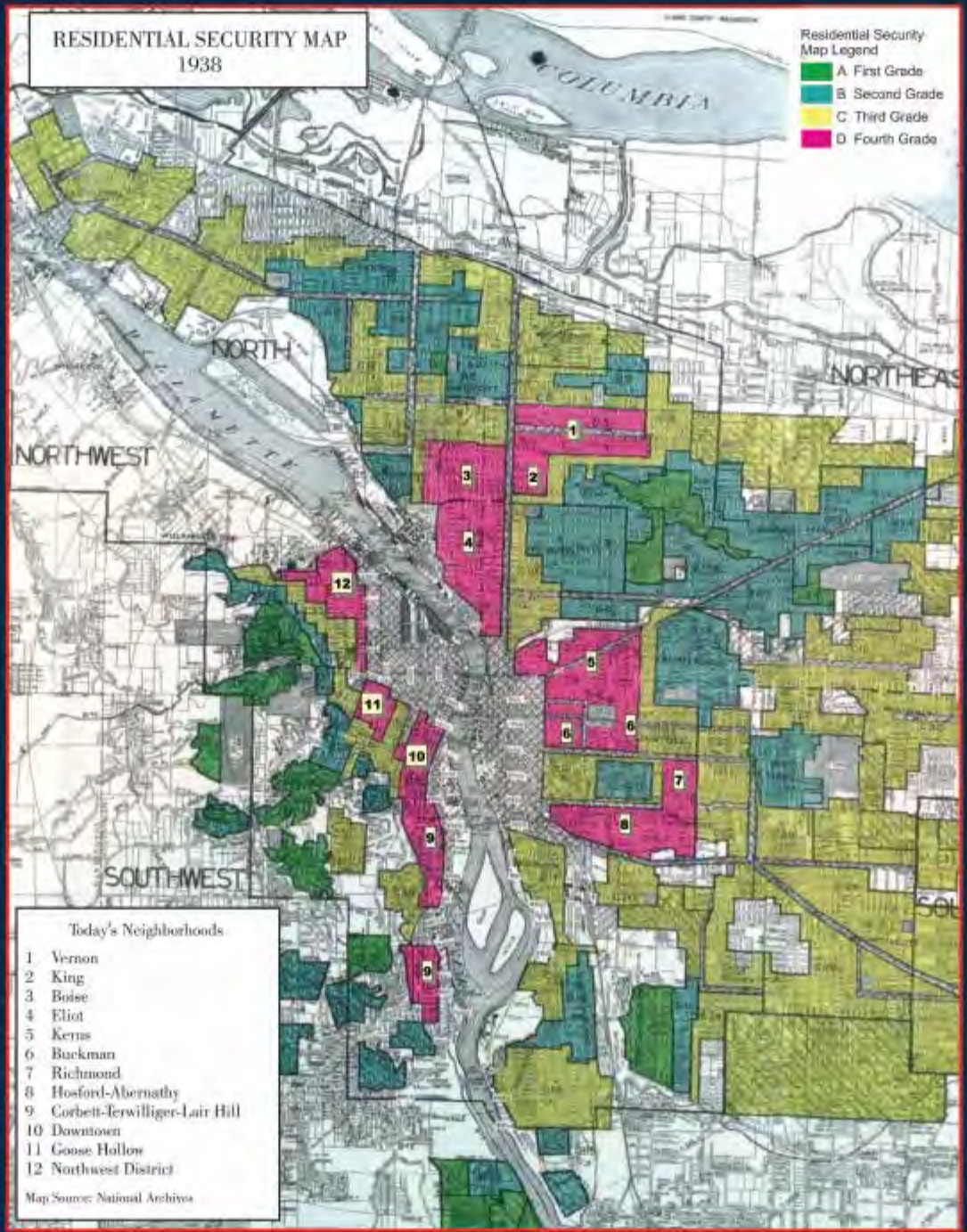
Institute of Portland Metropolitan Studies



Portland State
UNIVERSITY

RESIDENTIAL SECURITY MAP
1938

- Residential Security
Map Legend
- A First Grade
 - B Second Grade
 - C Third Grade
 - D Fourth Grade



- Today's Neighborhoods
- 1 Vernon
 - 2 King
 - 3 Boise
 - 4 Eliot
 - 5 Kerns
 - 6 Buckman
 - 7 Richmond
 - 8 Hosford-Abernathy
 - 9 Corbett-Terwilliger-Lair Hill
 - 10 Downtown
 - 11 Goose Hollow
 - 12 Northwest District
- Map Source: National Archives

NEIGHBORHOOD/ CITY

POPULATION & HOUSEHOLD VARIABLES (2000)

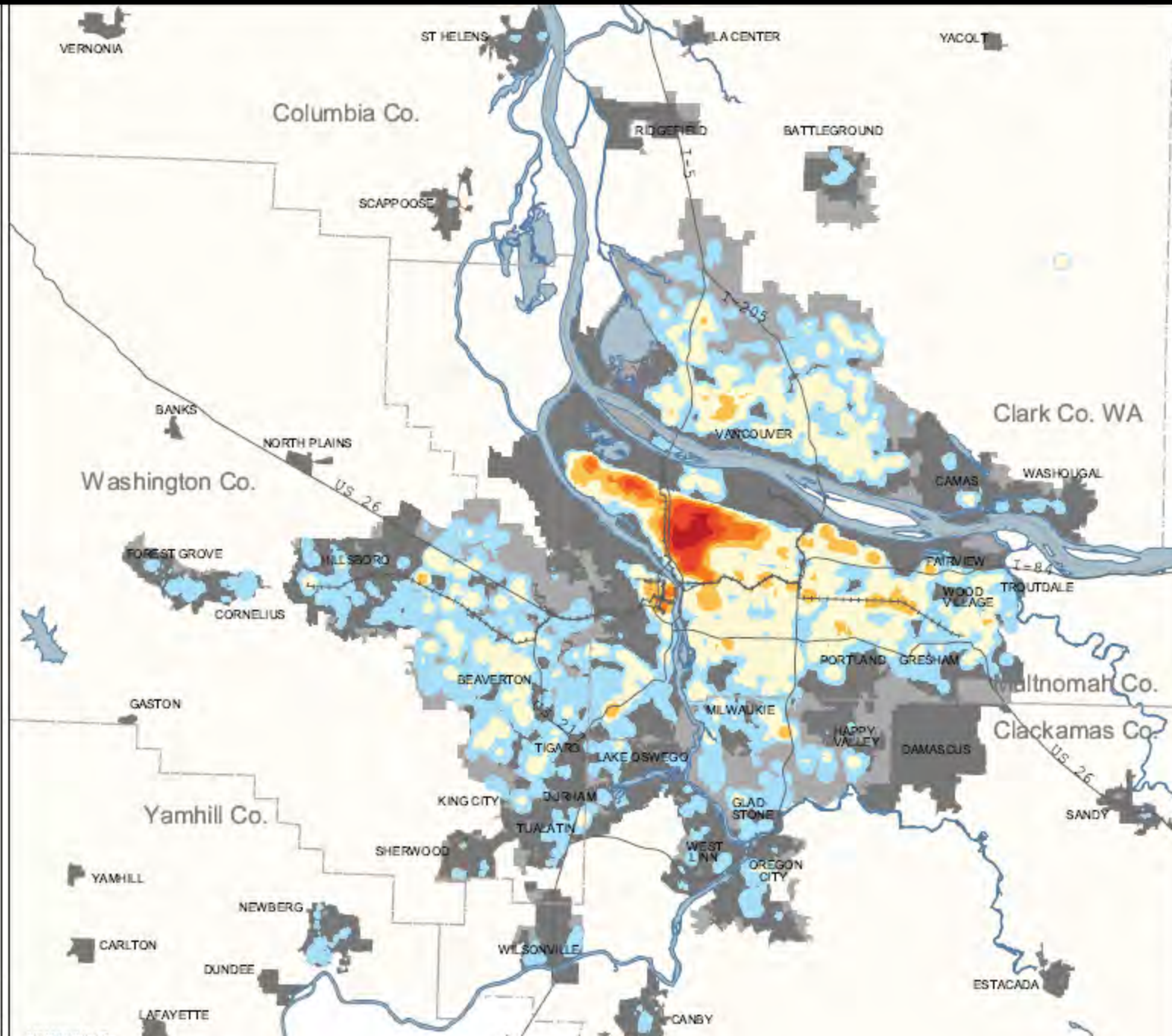
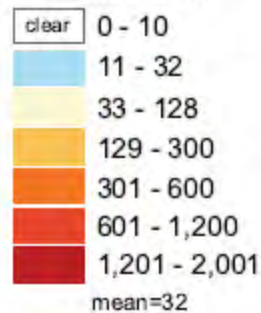
Why maps?

VARIABLE ▶	MAP ID	AREA	POPULATION (2000)	HOUSEHOLDS (2000)	PEOPLE IN POVERTY				PEOPLE OF COLOR				CHILD POVERTY		NO VEHICLE HH		CHILDREN (17-)		SENIORS (65+)		UPPER-INCOME HH (\$125K+)	
					TOTAL	%	TIER	+ 1990- 2000	TOTAL	%	TIER	+ 1990- 2000	%	TIER	%	TIER	%	TIER	%	TIER	%	TIER
MULTNOMAH COUNTY																						
ALAMEDA	1	0.49	4,030	1,620	115	2.9	1	-10	419	10.4	1	80	2.9	1	3.4	1	23.1	2	9.0	2	15.9	3
ALAMEDA-BEAUMONT-WILSHIRE	2	0.02	170	70	12	7.1	2	10	7	4.2	1	-10	9.5	2	0.0	1	25.0	2	6.5	1	23.2	4
ALAMEDA-IRVINGTON	3	0.11	790	300	16	2.0	1	10	100	12.7	2	20	1.0	1	2.0	1	26.6	3	9.0	2	21.6	4
ARBOR LODGE	4	0.87	6,060	2,570	622	10.3	3	-310	1,536	25.3	3	510	15.7	3	9.0	3	20.4	1	12.5	3	2.1	1
ARGAY	8	2.05	5,810	2,400	535	9.3	2	140	1,927	33.2	4	1,150	16.5	3	5.5	2	22.2	2	20.4	4	5.6	2
ARLINGTON HEIGHTS	10	0.16	330	140	20	6.2	2	0	20	6.2	1	10	0.0	1	10.1	3	21.5	2	12.9	3	44.9	4
ARNOLD CREEK	12	1.07	2,920	1,070	84	2.9	1	30	243	8.3	1	130	0.5	1	1.7	1	29.8	4	8.1	2	27.9	4
ASHCREEK	13	1.22	5,290	2,210	293	5.5	2	-170	673	12.7	2	330	5.8	2	2.5	1	23.0	2	7.8	1	12.7	3
BEAUMONT-WILSHIRE	18	0.72	5,160	2,180	227	4.4	1	60	716	13.9	2	280	5.0	1	5.6	2	21.4	1	12.1	3	11.7	3
BOISE	22	0.43	3,090	1,160	908	29.7	4	-100	2,075	67.1	4	140	39.7	4	30.4	4	28.1	3	8.0	2	1.1	1
BRENTWOOD/ DARLINGTON	24	1.75	11,500	4,320	1,357	11.9	3	-480	2,777	24.1	3	1,770	16.2	3	8.6	2	25.9	3	9.5	2	1.3	1
BRIDGETON	25	0.25	390	210	37	9.5	2	10	46	11.8	2	30	12.1	2	2.9	1	8.7	1	6.7	1	4.3	2
BRIDLEMILE	26	1.21	4,660	2,010	307	6.6	2	10	561	12.1	2	290	3.0	1	10.1	3	24.2	2	13.4	3	22.5	4
BRIDLEMILE/SOUTHWEST HILLS	27	0.19	630	240	6	1.0	1	-30	41	6.5	1	20	0.0	1	0.8	1	26.9	3	10.9	3	37.6	4
BROOKLYN	28	1.72	3,540	1,670	466	13.2	3	-140	634	17.9	2	-30	18.9	3	10.9	3	17.0	1	5.6	1	1.6	1
BUCKMAN	30	1.15	7,780	4,210	1,720	22.3	4	-120	1,394	17.9	2	-130	22.8	4	24.6	4	10.3	1	4.8	1	1.9	1
CATHEDRAL PARK	37	1.03	3,220	1,440	492	15.4	4	-30	811	25.2	3	420	22.6	4	17.2	4	20.8	1	12.5	3	1.4	1
CENTENNIAL	39	2.95	20,590	7,390	2,624	12.8	3	870	4,568	22.2	3	3,120	18.3	3	8.0	2	28.2	4	11.8	3	1.9	1
CENTENNIAL/PLEASANT VALLEY	40	0.31	1,320	510	93	7.1	2	70	313	23.7	3	280	9.7	2	5.7	2	26.7	3	7.2	1	1.2	1
CENTER	41	0.59	4,480	2,120	345	8.1	2	-220	817	18.2	2	330	5.6	2	14.4	4	19.5	1	12.3	3	2.6	1
COLLINS VIEW	46	0.87	2,320	790	145	7.7	2	30	270	11.6	2	100	5.8	2	1.8	1	15.0	1	7.2	1	23.5	4
CONCORDIA	48	1.33	9,520	3,750	926	10.2	3	-820	4,082	42.9	4	120	14.5	3	11.1	3	22.2	2	9.4	2	3.1	2
CORBETT/TERWILLIGER/LAIR HILL	49	1.70	4,890	2,840	530	10.9	3	20	669	13.7	2	310	10.4	2	8.1	2	7.9	1	9.1	2	10.7	3
CRESTON-KENILWORTH	63	0.80	8,130	3,470	1,349	16.8	4	10	2,078	25.6	3	740	24.2	4	14.7	4	19.2	1	9.0	2	1.4	1
CRESTWOOD	64	0.34	1,020	440	58	5.7	2	40	120	11.7	2	70	8.4	2	2.0	1	18.7	1	8.4	2	14.2	3
CULLY	65	3.14	13,000	4,710	2,299	18.0	4	40	5,811	44.7	4	3,340	22.7	4	12.8	3	26.5	3	9.3	2	2.4	1
DOWNTOWN	70	0.94	10,070	6,440	2,728	31.4	4	60	2,583	25.6	3	930	17.8	3	55.8	4	2.6	1	15.4	4	4.1	2
EAST COLUMBIA	74	0.71	660	250	61	9.4	2	10	209	31.9	4	190	12.2	2	2.8	1	21.5	2	9.9	2	6.0	2
EASTMORELAND	75	1.08	4,970	1,660	271	6.3	2	30	437	8.8	1	170	5.1	1	3.5	1	23.1	2	11.5	3	22.1	4
EASTMORELAND-REED	76	0.02	100	20	7	15.5	4	0	15	14.4	2	0	14.3	3	0.0	1	6.7	1	10.6	3	13.6	3
ELIOT	78	0.84	3,210	1,460	901	28.6	4	-50	1,650	51.4	4	160	35.8	4	33.3	4	19.7	1	6.7	1	0.8	1
FAIRVIEW	85	3.56	7,500	2,810	1,140	15.3	4	860	2,095	27.9	4	1,890	21.5	4	5.4	2	28.1	3	7.3	1	4.5	2
FAR SOUTHWEST	87	0.60	1,250	500	50	4.0	1	-20	154	12.3	2	90	0.0	1	5.2	2	23.1	2	7.3	1	17.5	4

2000: Distribution, African Americans

Portland-Vancouver PMSA (central area)

Total within circle 2/3 mile wide:



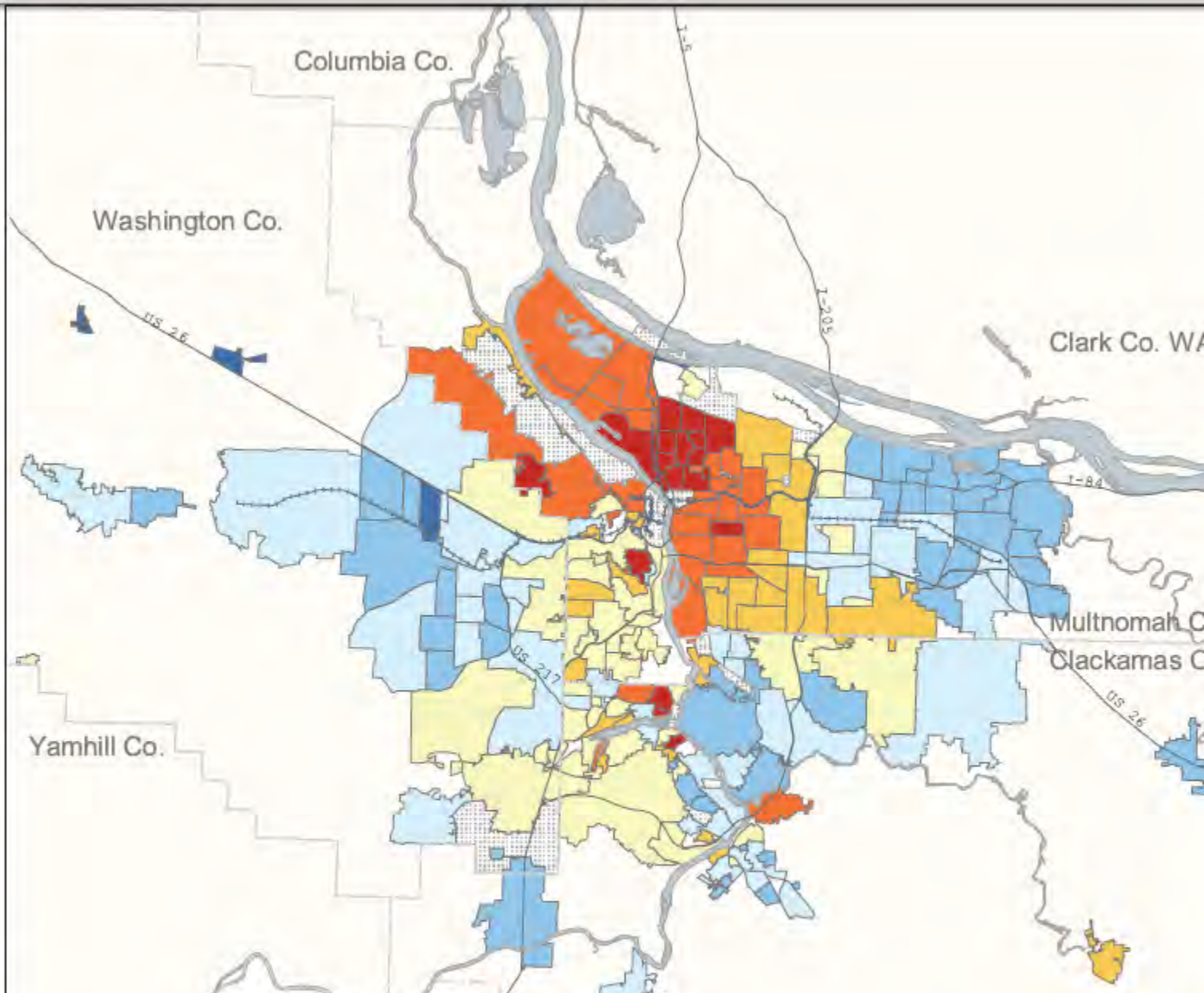
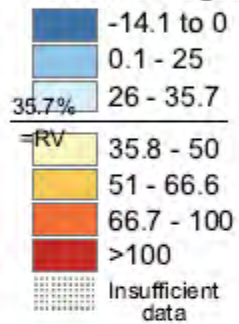
Variable based on U.S. Census Bureau SF1 2000
 PB block-level. African American, non-Hispanic.
 For a given location, colors represent the sum of
 values within 1/3 mile radius; if you were standing
 in a given color, the value applies to a circle 2/3

Percent Change 1995-2004:

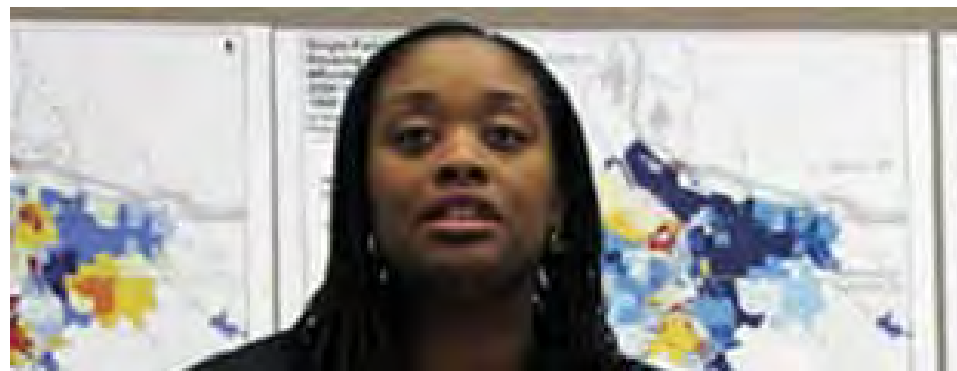
Median Sale Price* Single-Family Homes

by Neighborhood or City
Portland-Metro Area

Percent change:



* Percent change in estimated median saleprice, inflation adjusted. 1995 median saleprice =



Project champion: Coalition for a Livable Future

Key partners: Metro, IMS (PSU)

Major funders: Robert Wood Johnson Foundation, Kaiser Permanente Community Fund, NW Health Foundation

Wish List for Regional Equity Atlas 2.0

- A more comprehensive and responsive list of indicators for stakeholders
- Objectivity of a university partnership and unbiased data
- All indicators mapped at a neighborhood level
- Disaggregated whenever possible
- Interactive web-based mapping tool
 - Multi-layering and transparencies
 - Some analytical capacity
- Visualization and data download capabilities
- Story-telling interface
- Varieties of community engagement

Stakeholder
involvement

Regional Equity Atlas 2.0

Equity Frame

outcomes

All people have access to meeting basic needs

All people have the power to shape the future of their communities

All communities experience the benefits and share the costs of growth and change

All people are able and have the opportunity to achieve their full potential

Indicator Categories:

demographics
housing
quality education
transportation
food
democratic participation
health care
health outcomes
environment
economic opportunity
parks and nature
services and amenities
community

Equity analysis concerns:

Disaggregation of data by race, ethnicity, income, and age

Mapping at the neighborhood level

“Aspirational” indicators

Regional Equity Atlas 2.0 Mapping Tool User Guide

Powered by Metro's Context Tool Engine

Coalition for a Livable Future
Equity Atlas 2.0



Powered by Metro DDC Context Tool Engine

Metro's Context Tool

Coalition for a Livable Future - Equity Atlas 2.0

File Export Locate Options Indicators Tables and Charts Windows Help

Table of Contents

Analysis Units

- Neighborhoods

Indicators

- Proximity to Recreation Facilities
- Proximity to publicly accessible natural areas
- Proximity to publicly accessible parks
- Percent Students Eligible for Free or Reduced Lunch (by school) [Points]
 - 2 - 30%
 - 31 - 45%
 - 46 - 70%
 - 71 - 95%

Map Layers

- Oregon Metro Regional Basemap
- OLIS Thematic Map Data
- Natural Resources

Chart

Chart Type: Radar Show Mean Line

FOSTER-POWELL

Expert Graph

Data Table

Each cell in the heatmap is given a value from 1 to 5 (low to high). The average of the cells within each boundary is the composite score; the sum of all elements of the composite heatmap converted to a 2 to 100 scale.

Analyzer Geographs

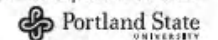
ID	Proximity to publicly accessible parks	Proximity to publicly accessible natural areas	Proximity to Recreation Facilities	Composite
FOSTER-POWELL	4.76	5	2.72	68
FOURTH PLAIN VILLAGE	4.74	3.91	1	64
FRUIT VALLEY	2.5	1.29	0.85	32
GIFFNEY SAGE	2.74	4.37	1	37
GLADSTONE	4.44	4.43	2.03	76
GLENFAR	4.8	2.52	1.3	62
GLENHURST	4.82	4.04	2.41	82
GOOSE HOLLOW	4.96	4.66	3.3	99
GOOSE HOLLOW/SOUTHWEST RD	1	4.6	2.2	83
GOOSE HOLLOW/SOUTHWEST RD	1	4.6	2.2	83
GRANT BARK	4.84	1	4.28	71
GRANT PARK/HOLLYWOOD	4.83	1	3.67	67
GREATER BRUSH PRairie	1.57	1	1	25
GREEN PEARROWS	3.95	1	1	42
GREENWAY	4.23	4.78	3.58	89
GRESHAM - ASSET	4.71	4.42	2.95	85
GRESHAM - CENTRAL	4.85	4.37	1	64
GRESHAM - CITY CENTRAL	4.57	3.18	3.84	81
GRESHAM - GRESHAM BLITTE	3.33	4.47	1.24	69
GRESHAM - HOLLYBROOK	4.85	3.84	1.18	75
GRESHAM - KELLY CREEK	4.42	3.89	1	68
GRESHAM - MT. WOOD	4.36	3.57	1.22	64
GRESHAM - NORTH CENTRAL	3.48	1.85	1.33	58
GRESHAM - NORTH GRESHAM	3.12	3.4	0.96	52
GRESHAM - NORTHWEST	4.23	3.78	3.98	85
GRESHAM - NORTHWEST	4.12	4.37	1.43	72
GRESHAM - POWELL VALLEY	4.47	4.57	2	77
GRESHAM - ROCKWOOD	1.52	3.3	1	41

Records: 142 of 374 Selected | Options



Metro | People places. Open spaces.

Institute of Portland Metropolitan Studies



Add/Remove Data

Heatmaps Shapes Analysis Units Reference Layers Web

- Housing
- Parks and Natural Areas
- Quality education
- Transportation
- Food
- Health Care
- Services and Amenities
- Community
- Demographics
- Economic Opportunity

Add/Remove Data

Heatmaps Shapes Analysis Units Reference Layers Web

- Housing
- Quality education
- Transportation
- Food
- Democratic Participation
- Health Care
- Health Outcomes
- Demographics
- Healthy Environment
- Economic Opportunity
- Population Overlays

Add/Remove Data

Heatmaps Shapes Analysis Units Reference Layers Web

Analysis Geographies

- 2010 Census Tracts
- Neighborhoods
- Cities
- Counties

Add/Remove Data

Heatmaps Shapes Analysis Units Reference Layers Web

- Oregon Metro Regional Basemap
Opacity
- 2011 Metro Region Aerial Photos
Opacity
- RLIS Thematic Map Data
Opacity
 - Schools
 - Schools
 - Private
 - Public
 - Transportation
 - Light Rail Stops
 - Existing
 - Bus Stops
 -
 - Freeways
 -

Table of Contents

Analysis Units

- 2010 Census Tracts

Indicators

- Facilities
- Proximity to publicly accessible parks
- Rate of Diabetes [Tracts]
 - 0 - 6.1%
 - 6.2 - 7.8%
 - 7.9 - 11.5%
 - 11.6 - 19.7%
 - Data Not Available (999)

Map Layers

- Oregon Metro Regional Basemap
- RLIS Thematic Map Data

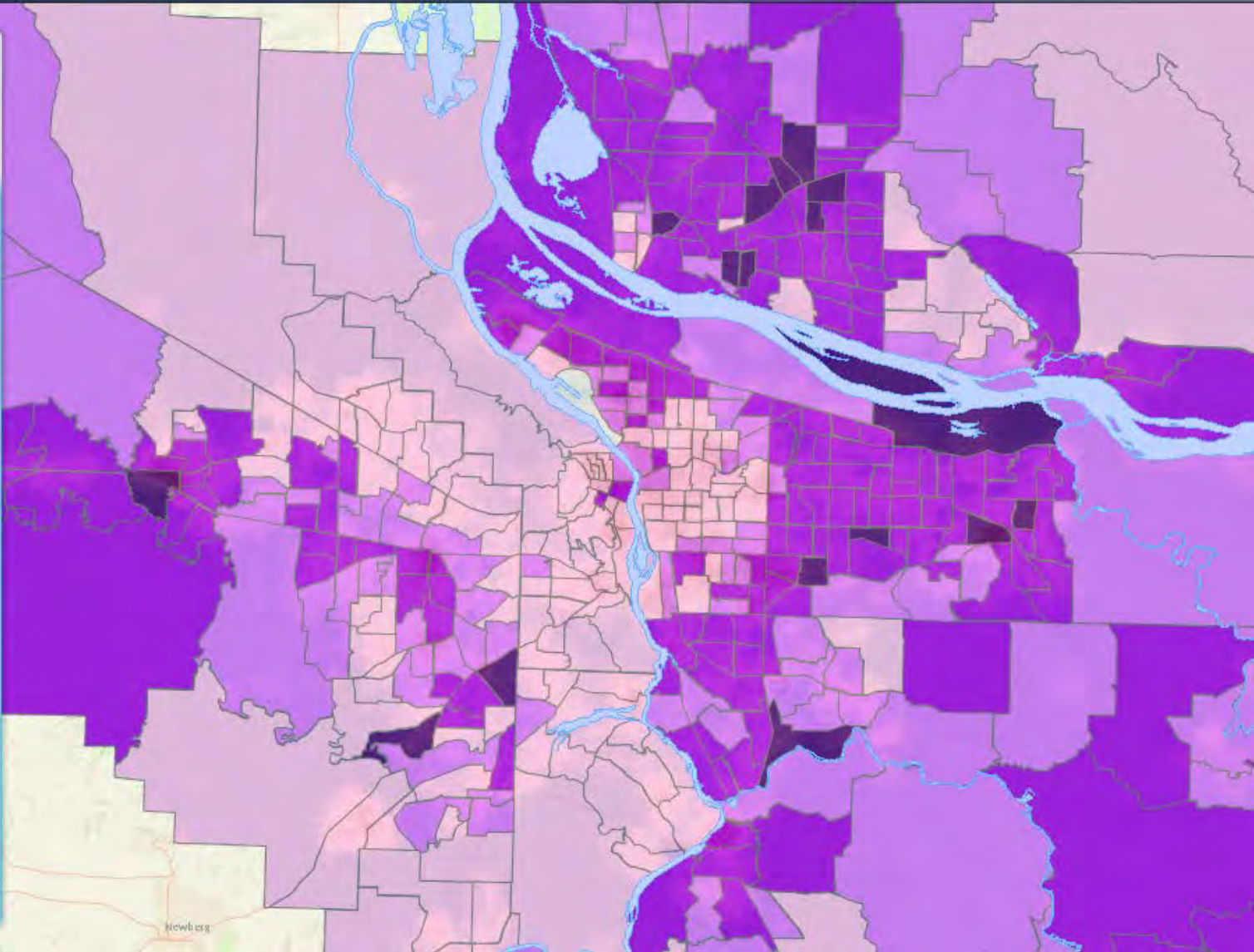


Table of Contents

Analysis Units

- 2010 Census Tracts

Indicators

- Proximity to Farmers' Markets and Produce Stands
- Walkability - Sidewalk Density
- Transit Access
- Proximity to Recreation Facilities
- Proximity to publicly accessible parks
- Rate of Diabetes [Tracts]

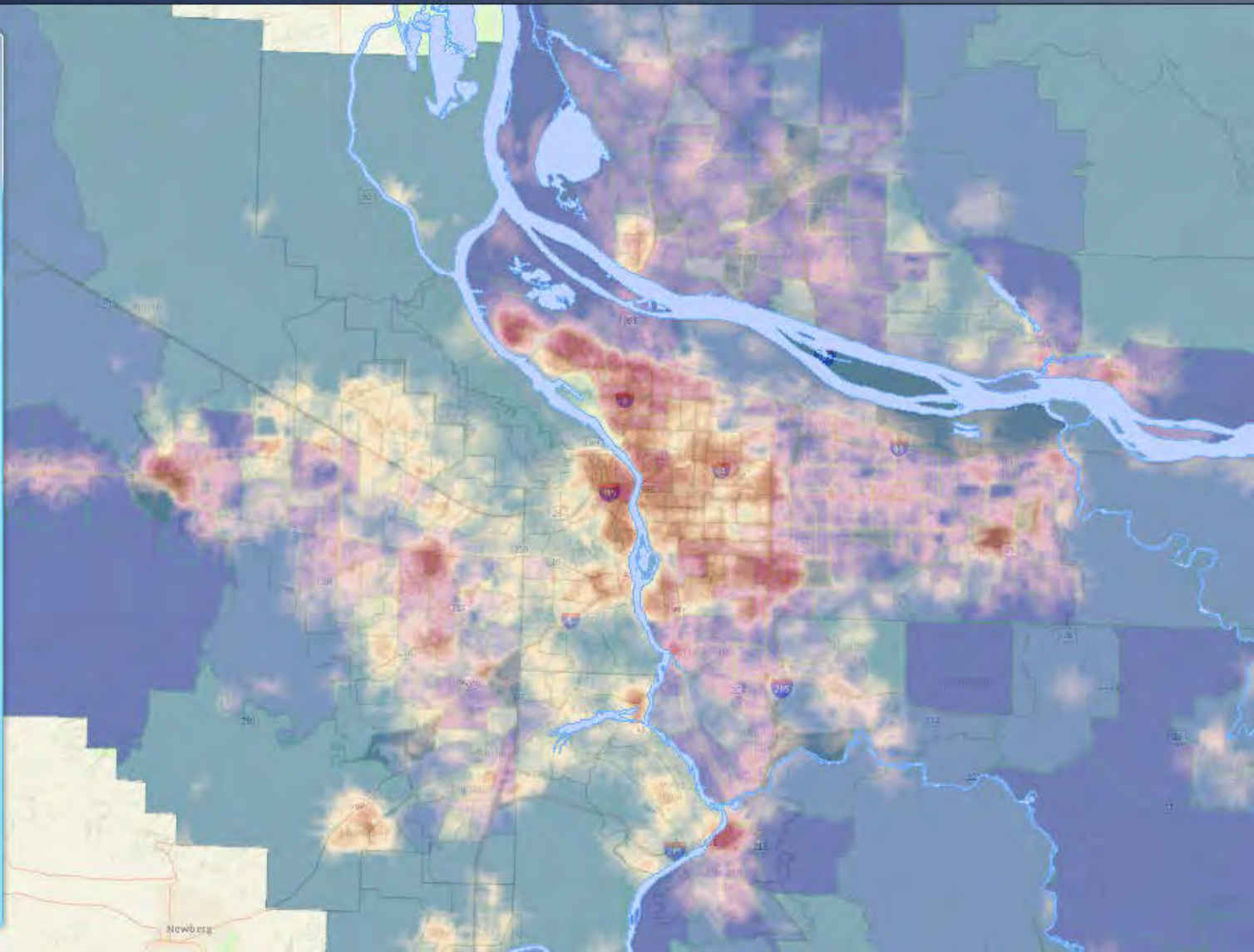
Rate of Diabetes [Tracts]

- 0 - 6.1%
- 6.2 - 7.8%
- 7.9 - 11.5%
- 11.6 - 19.7%
- Data Not Available (999)

Map Layers

- Oregon Metro Regional Basemap

Opacity



Coalition for a Livable Future - Equity Atlas 2.0 - Diabetes Rate in Relationship to Healthy Eating Active Living Composite

- File
- Export
- Locate
- Options
- Indicators
- Tables and Charts
- Windows
- Help

Table of Contents

Analysis Units

- Neighborhoods

Indicators

- Proximity to Farmers' Markets and Produce Stands
- Walkability - Sidewalk Density
- Transit Access
- Proximity to Recreation Facilities
- Proximity to publicly accessible parks
- Rate of Diabetes [Tracts]

Rate of Diabetes [Tracts]

- 0 - 6.1%
- 6.2 - 7.8%
- 7.9 - 11.5%
- 11.6 - 19.7%
- Data Not Available (999)

Map Layers

- Oregon Metro Regional Basemap

Opacity

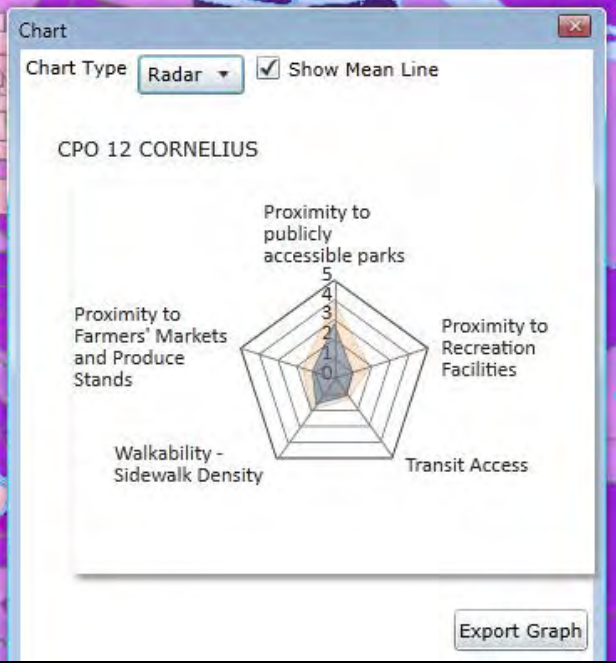
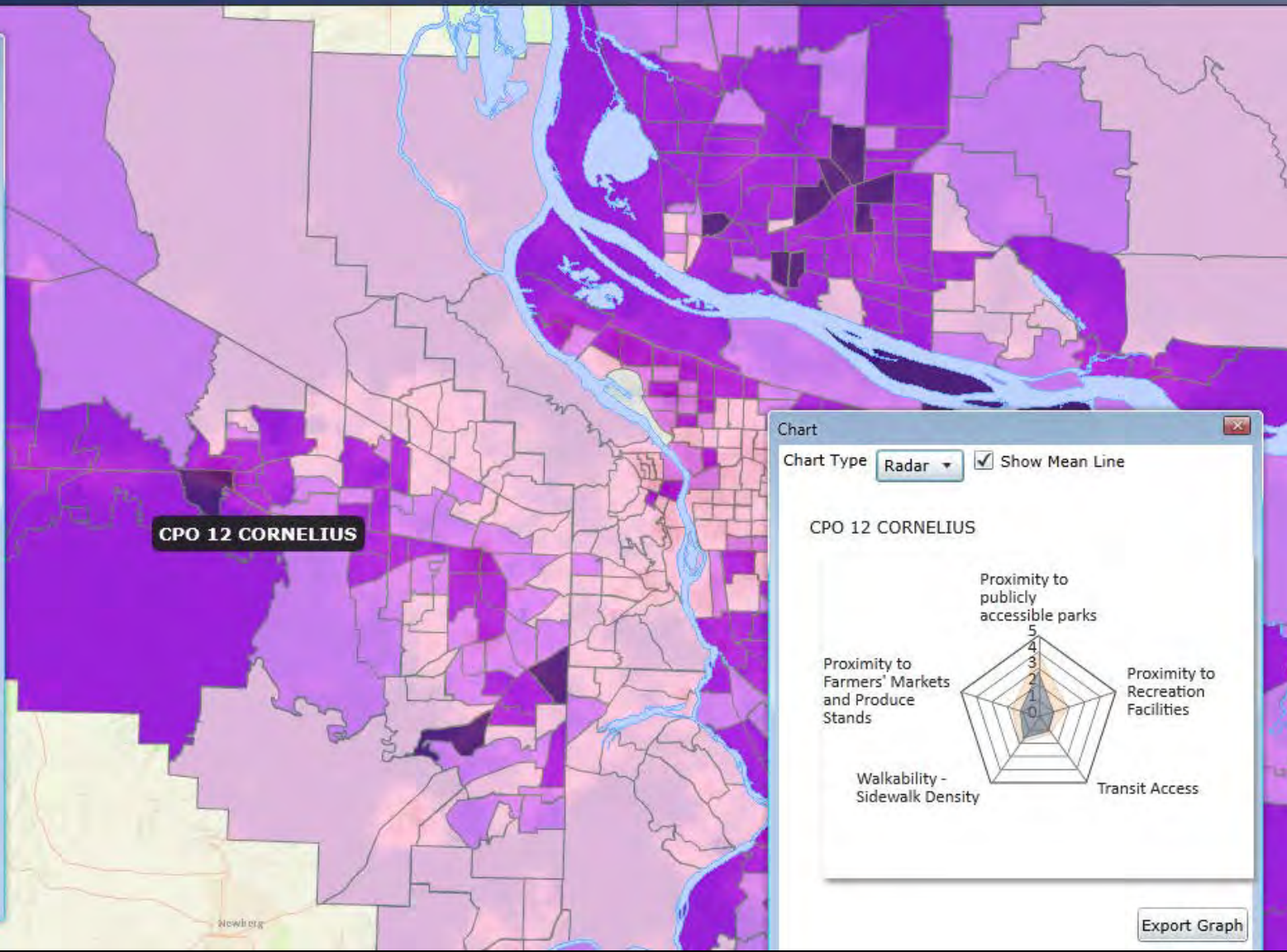


Table of Contents

Analysis Units

- Neighborhoods

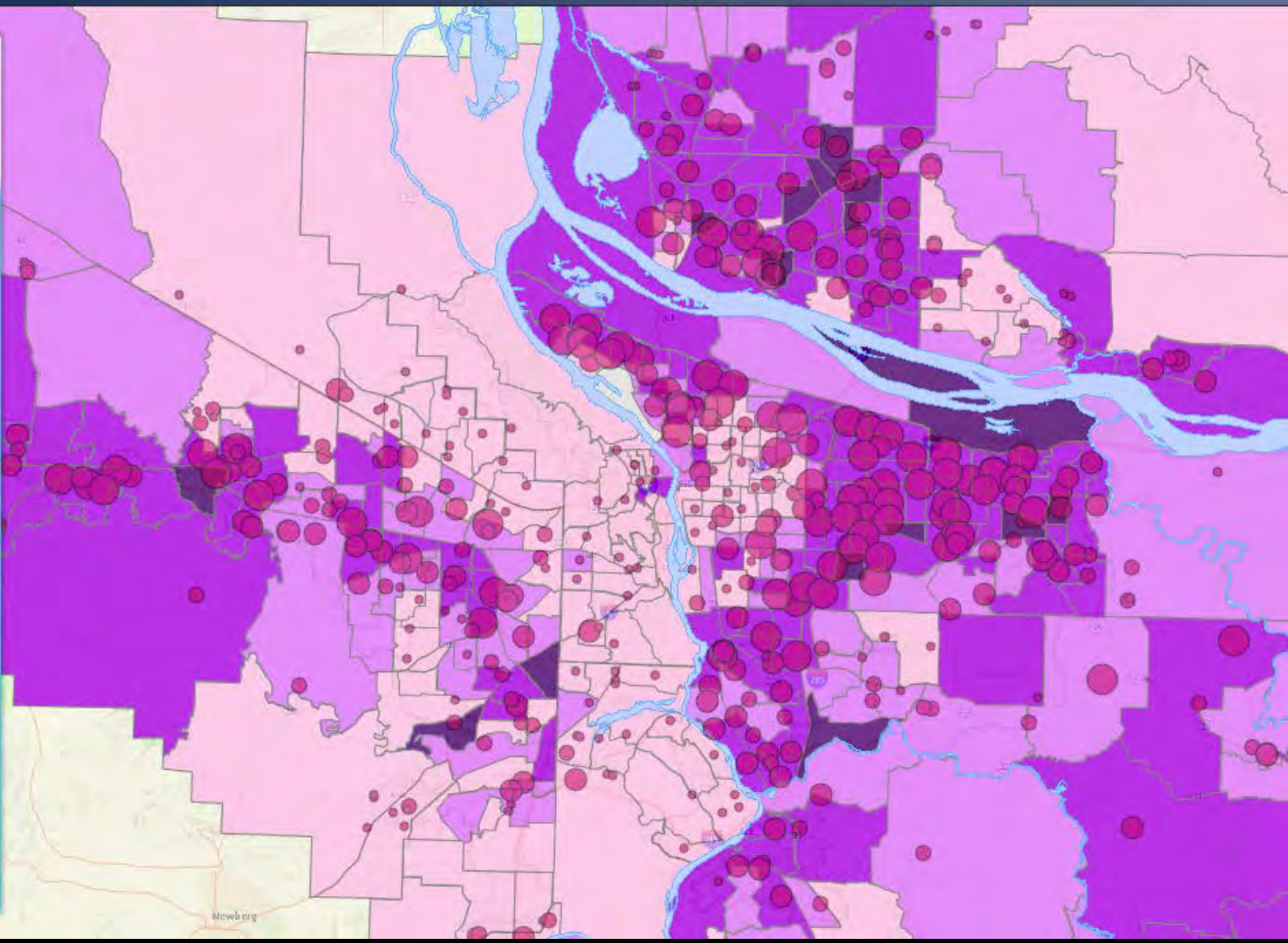
Indicators

- Rate of Diabetes [Tracts]
 - 0 - 6.1%
 - 6.2 - 7.8%
 - 7.9 - 11.5%
 - 11.6 - 19.7%
 - Data Not Available (999)
- Percent Students Eligible for Free or Reduced Lunch (by school) [Points]
 - 2 - 30%
 - 31 - 45%
 - 46 - 70%
 - 71 - 95%

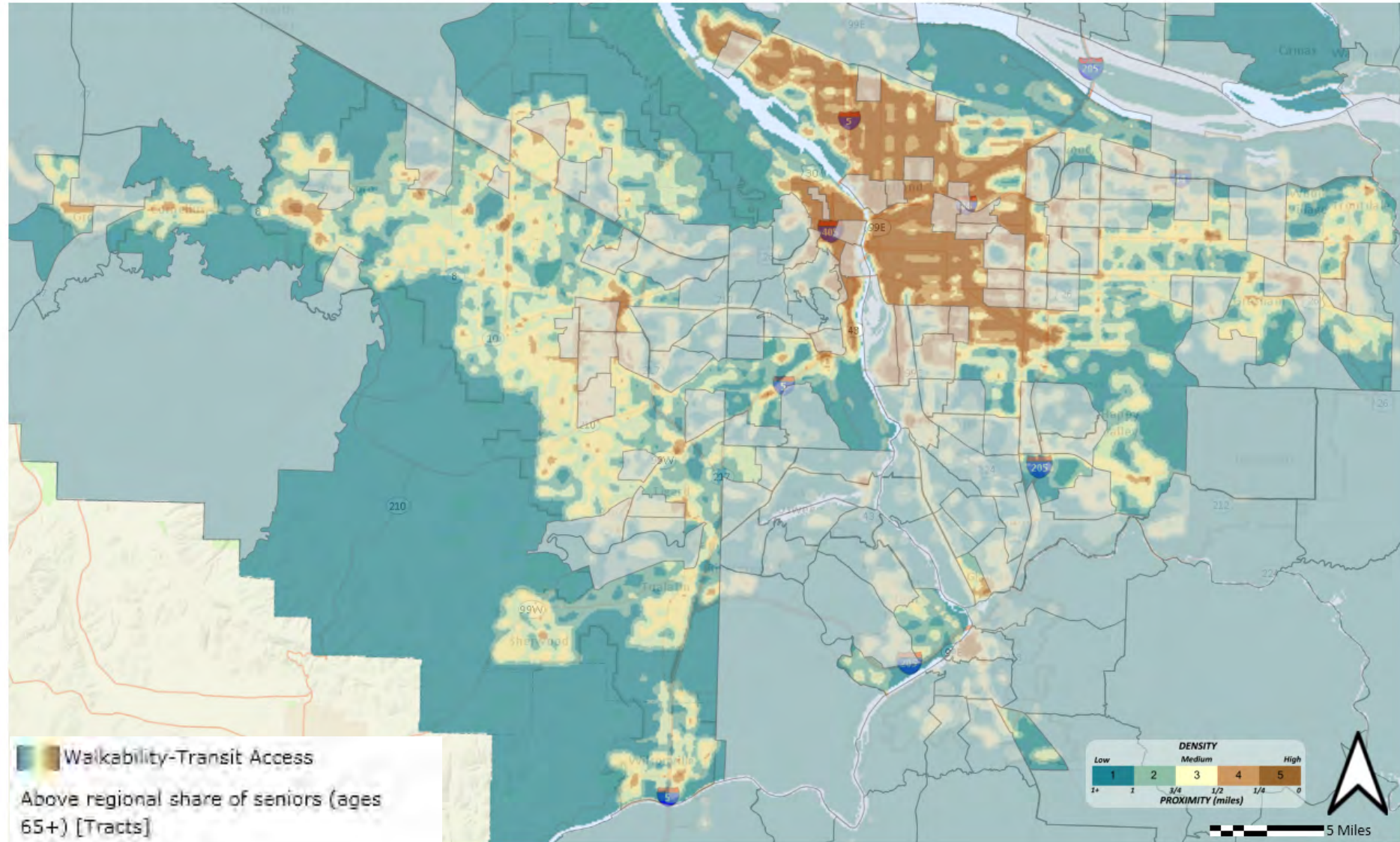
Map Layers

- Oregon Metro Regional Basemap

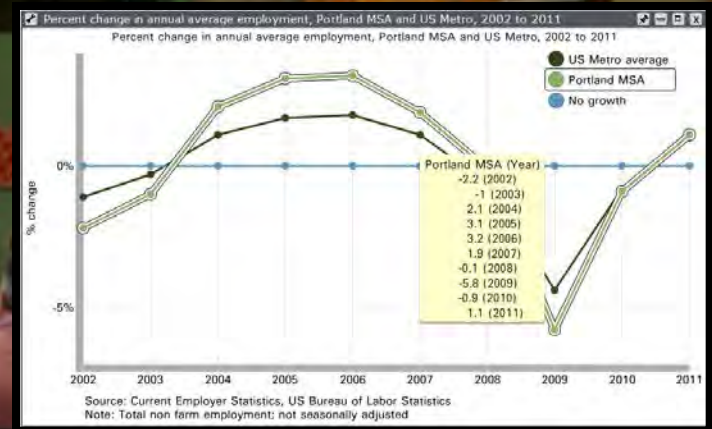
Opacity



Walkability-Transit Access in Relation to Above Regional Average Seniors



CLF's disaggregation work-around



*Measuring Results
Inspiring Action*

GREATER PORTLAND PULSE

portlandpulse.org

Measuring Results, Inspiring Action.

[About](#) | [Partners](#) | [Contact](#)

Search...


Search

HOME
ABOUT
EXPLORE BY TOPIC
OUR REGION
DATA STORIES
EXPERIMENTAL INDICATORS


Explore by Tag

- access
- achievement
- arts
- business
- child poverty
- civic
- crime
- economy
- education
- employment
- environment
- graduation
- head start
- health
- housing
- income
- land use
- race and ethnicity
- recidivism
- safety
- segregation
- transportation
- wages
- youth


REPORTS




economic opportunity




education




healthy people




safe people




arts and culture




civic engagement



healthy natural environment



housing and communities



access and mobility

What We Do


Greater Portland Pulse gathers data and provides a shared set of indicators to track social, environmental, and economic well-being for the Portland region. [\[Read more\]](#)

Portland Pulse Report

Read our first report, "The Path to Economic Prosperity: Equity and the Education Imperative."

Endorse Us

Show your support for Greater Portland Pulse. [Sign on to our list of GPP supporters.](#)

 You, Rod Johnson and 239 others like this.

Project champions: Metro, IMS (PSU)

Key funders: Metro, PSU, city governments

Wish List for Greater Portland Pulse

- Consensus-based outcomes
- Limited number of the best indicators for the outcome possible
- Real-time temporal change
- Disaggregated whenever possible
- Interactive web-based data visualization tool
- Visualization and data download capabilities
- Ongoing engagement
 - Results teams
 - Key stakeholders
 - Community members

Greater Portland Pulse

Advisory Team



Equity Panel



outcomes

Economic opportunity:
individual, family, business, & community prosperity

Education:
well-educated individuals and workforce

Safe People:
Community members live at minimal risk of danger, trust safety leaders and public officials

Arts and Culture:
Daily arts for youth, economic stability for providers, equitable access

Civic Engagement:
Informed community members, strong sense of community, political participation

Healthy People:
low morbidity, high quality of life, high life expectancy

Healthy Natural Environment:
healthy soils, water, environmental systems; EJ and equity

Housing and Communities:
access to housing, access to home ownership, improved homelessness, access to services, community connectedness, parity for people of color

Access and Mobility:
access to essential info, goods, services, activities, and destinations; mobility options; system that supports equity

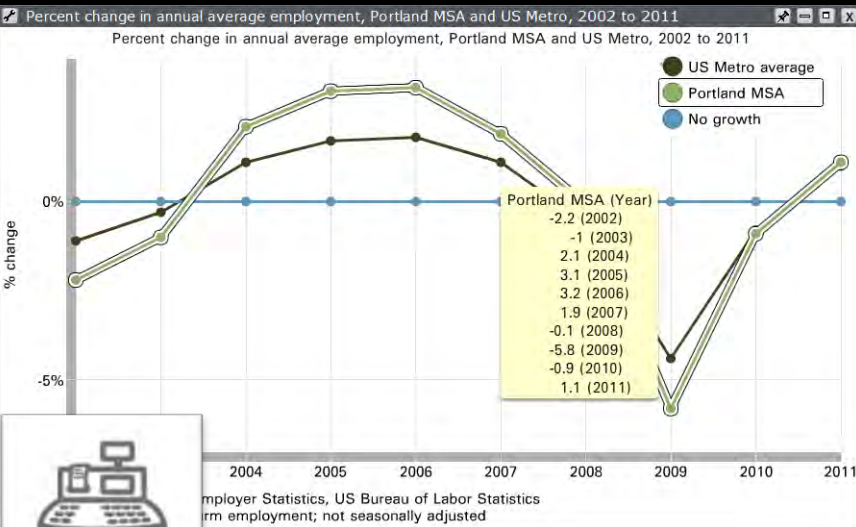


Indicator Equity Frame:

Disaggregation, Mapping, Aspirational Indicators, Community Perspective

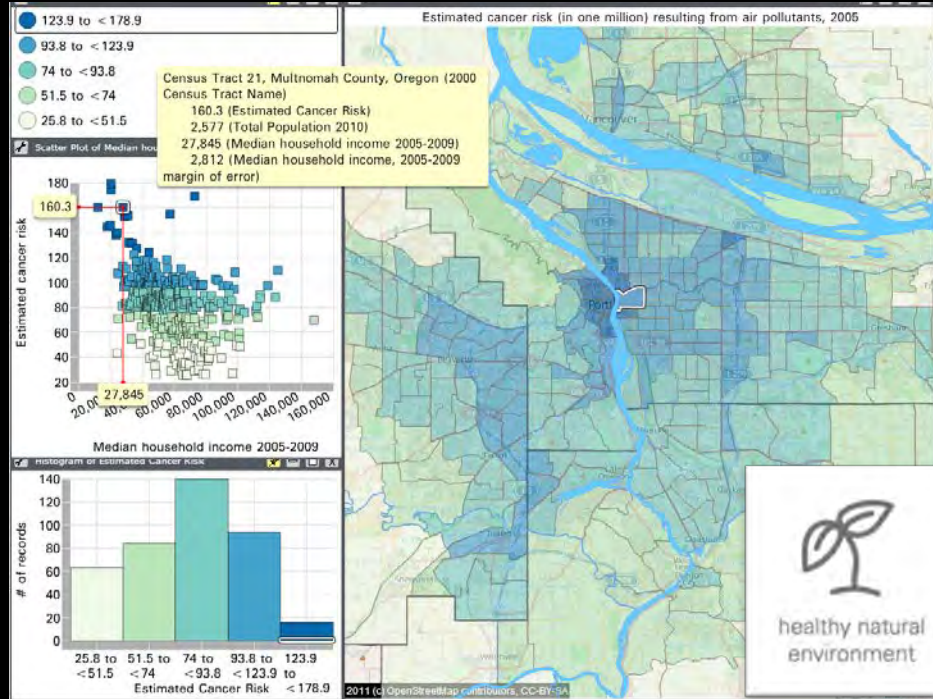


INDICATORS



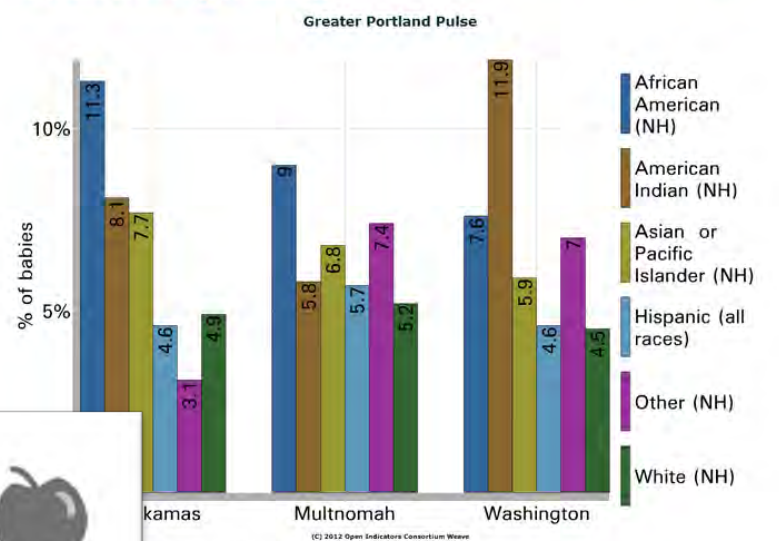
economic opportunity

Weave visualizations

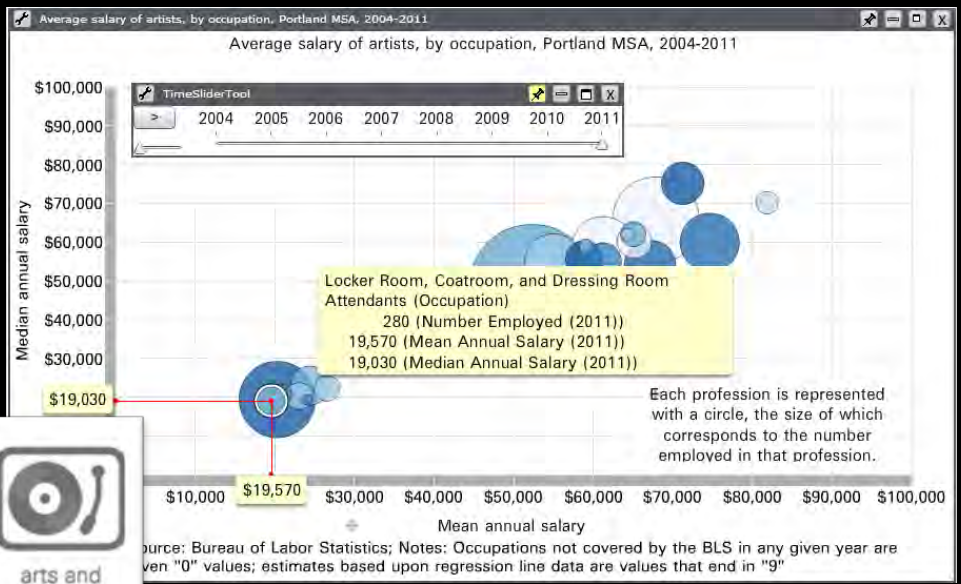


healthy natural environment

Percentage of babies born at low birthweight (1,500 - 2,499 grams), by race and ethnicity, 2008-2010



healthy people



arts and culture

Greater Portland Pulse in the Community

measuring results, inspiring action.

HOME ABOUT EXPLORE BY TOPIC OUR REGION DATA STORIES EXPERIMENTAL INDICATORS

REPORTS

Home / Data Stories

Data Stories

Using data to tell stories

At Greater Portland Pulse we use data to help us understand the region. In combination, the data available on this site can tell a story about the greater Portland region.

Vitality of Local Arts - The measurement of various factors used to form a picture of Portland's aesthetic and cultural vitality.

Challenges & Opportunities - Connectors are leaders in the region. Sources of information, know how to get things done. On February 29, the connectors convened to discuss their interest, identified through a survey of the Connect challenges and opportunities from among the GPP in the region.

Food System Talent - Food system sustainability requires a continuous effort to improve farm practices; for developing new ways to add value to food products; managing food processing, distribution, and retail businesses; and for meeting the varying labor requirements of the food system.

Human Capital - Developing the human resources we need to sustain the region and salaries attracting the necessary talent to food processing and retail businesses.

Poverty - Alarming rates of kids not making it to school in East Portland.

- Black History Month
- Valentine's Day
- National American Indian Heritage Month
- Veterans Day
- Halloween In The Greater Portland Region
- Hispanic Heritage Month
- Age-Friendly Region
- United Way Data Story
- Vitality Of Local Arts
- Poverty In Multnomah County
- Challenges And Opportunities
- Food System Talent
- Human Capital

Your Data Stories

We want to hear how you are using our data. Send us a short description of how you have used our data in a project, discussion, or presentation.

[\[Learn more\]](#)

GPP takes our data on the road!!

At Greater Portland Pulse we love taking our data out and sharing it with the community. This winter we created custom presentations for groups around the region. In February we brought a State of the Region presentation to the [WSU Vancouver Campus Advisory Committee](#) and to the leadership team at [Portland Center Stage](#). In March, we were back in Vancouver showing 40 city managers the way education and economic opportunity are coming together in their city to help create a good place to live (to learn more about the Vancouver presentation see the following article). Would your organization like a custom presentation? Email [Liza](#) to find out more.



In our region, are families better able to make ends meet north or south of the Columbia River?

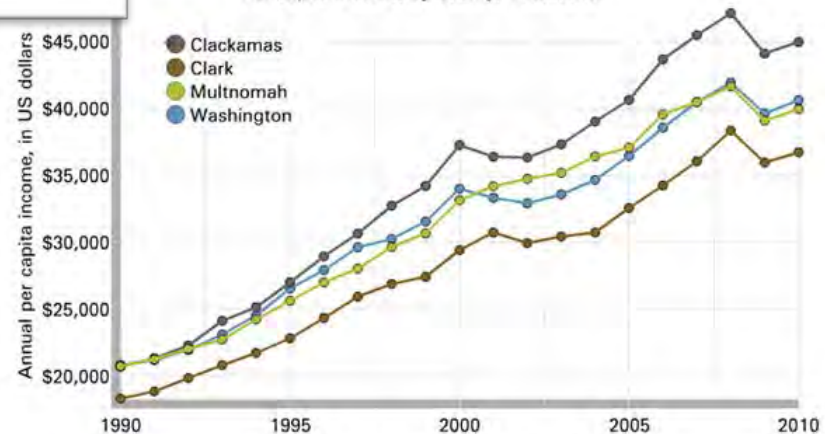
The [Average Wage Per Job](#) and [Per Capita Income](#) are lower in Clark County than other counties in the region.

The Portland Metropolitan Statistical Area (PMSA) has grown from \$30.7 billion in 2000 to \$40.7 billion in 2010. Over the same period, the area's per capita personal income has grown from \$29,843 to \$39,945.

Washington County has the highest level of per-capita income in the four county region (\$44,954 in 2010), followed by Multnomah County (\$40,606 in 2010). The average for Multnomah County is very close to the average for the Portland Metropolitan area (\$39,945) and Clark County has the lowest per capita income (\$36,714 in 2010).

Clark County's per capita income was 95.9% of the U.S. Metro per capita income in 2010, down from 97.1% in 2000.

Per capita income, by county, 1990-2010



Source: United States Department of Commerce

Twitter

[portlandpulse](#)

Alarming rates of kids not making it to school in East Portland

<http://t.co/VHfNM6LsKX>
<http://t.co/8RRgj3ULKn>

Portland Pulse Report

Read our first report, "The Path to Economic Prosperity: Equity and the Education Imperative."

Regional Equity Atlas

Greater Portland Pulse

Key Champions

Advocacy coalition of
community-based
organizations

Regional government
Higher education

Primary Funders

Foundations
(health-focused)
Project based funding

Government
Higher education
Continuous funding needed

Outcome Frame

Regional social equity as
defined by CLF's public
engagement process

9 outcome themes
(social equity
considerations underlie all
outcome and indicators}

Purpose

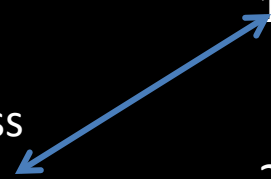
1. Inspire dialogue
2. Inform policy
3. Measure progress
toward desired
outcomes

1. Measure progress
toward desired
outcomes
2. Inform policy
3. Inspire dialogue

Intended Audience

1. Public
2. Government

1. Government
2. Public

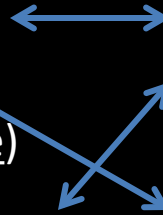


Regional Equity Atlas

Greater Portland Pulse

Measurement priorities

1. Objective, unbiased
2. Spatial precision
(neighborhood scale)
3. Temporal precision/replicability



1. Objective, unbiased
2. Temporal precision/replicability
3. Spatial precision

Outcome and Indicator identification

Broad engagement
Research/best practices

Broad engagement
Research/best practices

Number of indicators

No initial limit set
132 (13 categories)



Strict initial limits set
64 indicators (9 topics)

Indicator costs

Some proprietary data
High processing costs

No proprietary data
Low processing costs

Indicator update cycles

5 to 10 year cycle
Low maintenance costs



Continuous
High maintenance costs

Regional Equity Atlas

Greater Portland Pulse

Visualization Tool

Context Tool (Metro)

Weave (Weave Open Indicators Consortium)

License holder

Metro is sole license holder

IMS holds license

Projects' visualization emphasis

1. Mapping (raster and vector)
2. Tables and charts

1. Charts and graphs
2. Mapping (vector)

Tools' strengths

1. Spatial analytics
2. Map visualization
3. Interactive tables and charts

1. Interactive visualizations
2. Linked histograms and scatter plots to maps

Concluding Thoughts

- *What do measuring and tracking social equity require within the framework of inspiring action or making something actionable?*
 - *Actionable* data? “real time” spatially generalized data vs. geographic specificity
 - At the regional level, is geographically generalized data actionable?
 - Number of indicators and geographic scale
 - Too many – too few?
 - The complexities of equity may require many
 - Actionable data
 - May require sub-county level data
 - Disaggregation vs. geographic scale
 - The notion of “aspirational” indicators
 - Equity Atlas’ population overlay solution
 - Community perspective
 - Engagement during the creation and maintenance phases
 - Agency in using the tools