

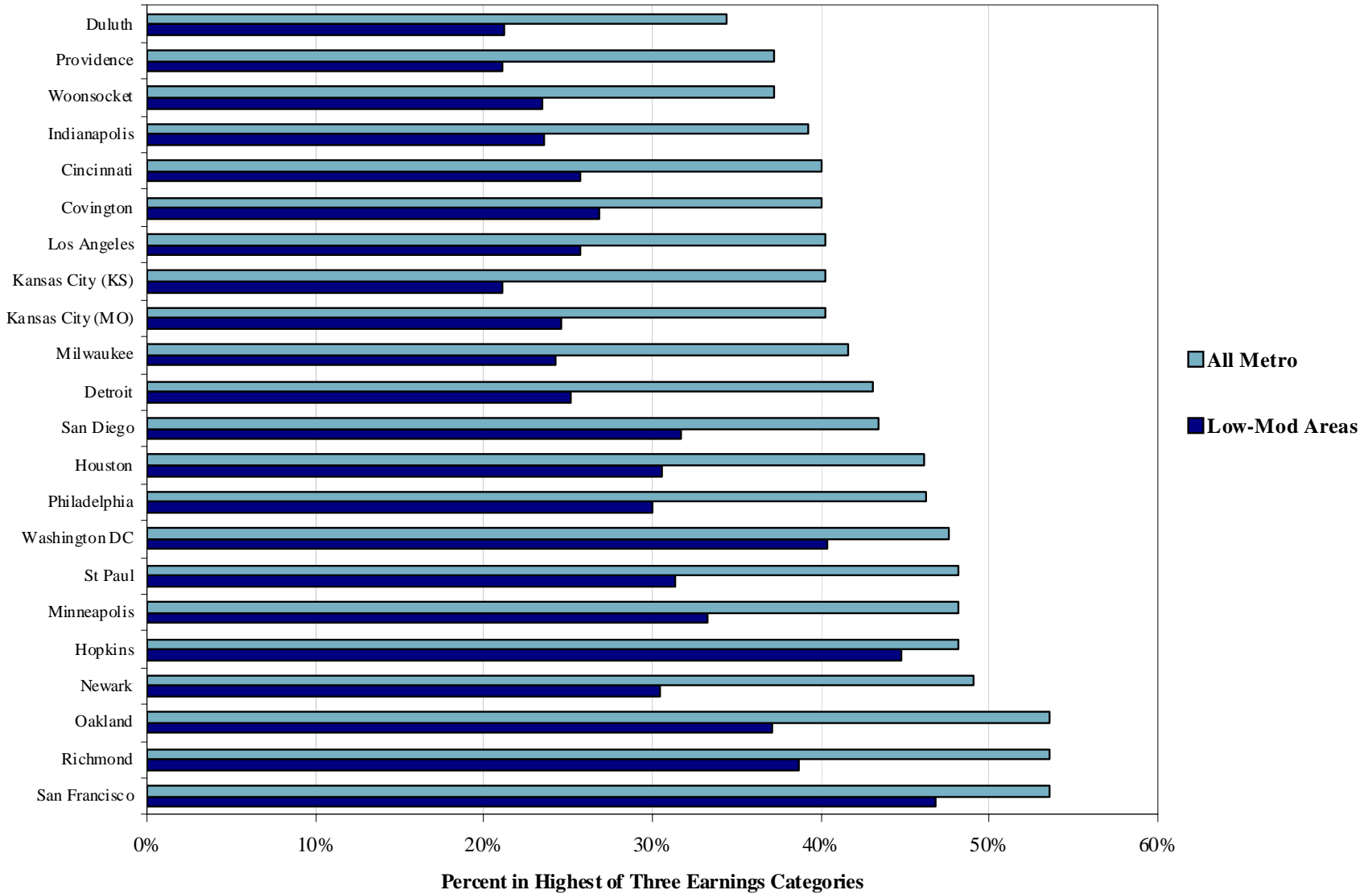
Outline

- Why LISC is exploring uses of Local Employment Dynamics (LED) data
- Percentage of employed residents in the highest earnings level in 22 cities served by LISC
- Distribution of employed residents by industry and industry group
- Change in resident employment by industry group
- Relationship between industry group and earnings

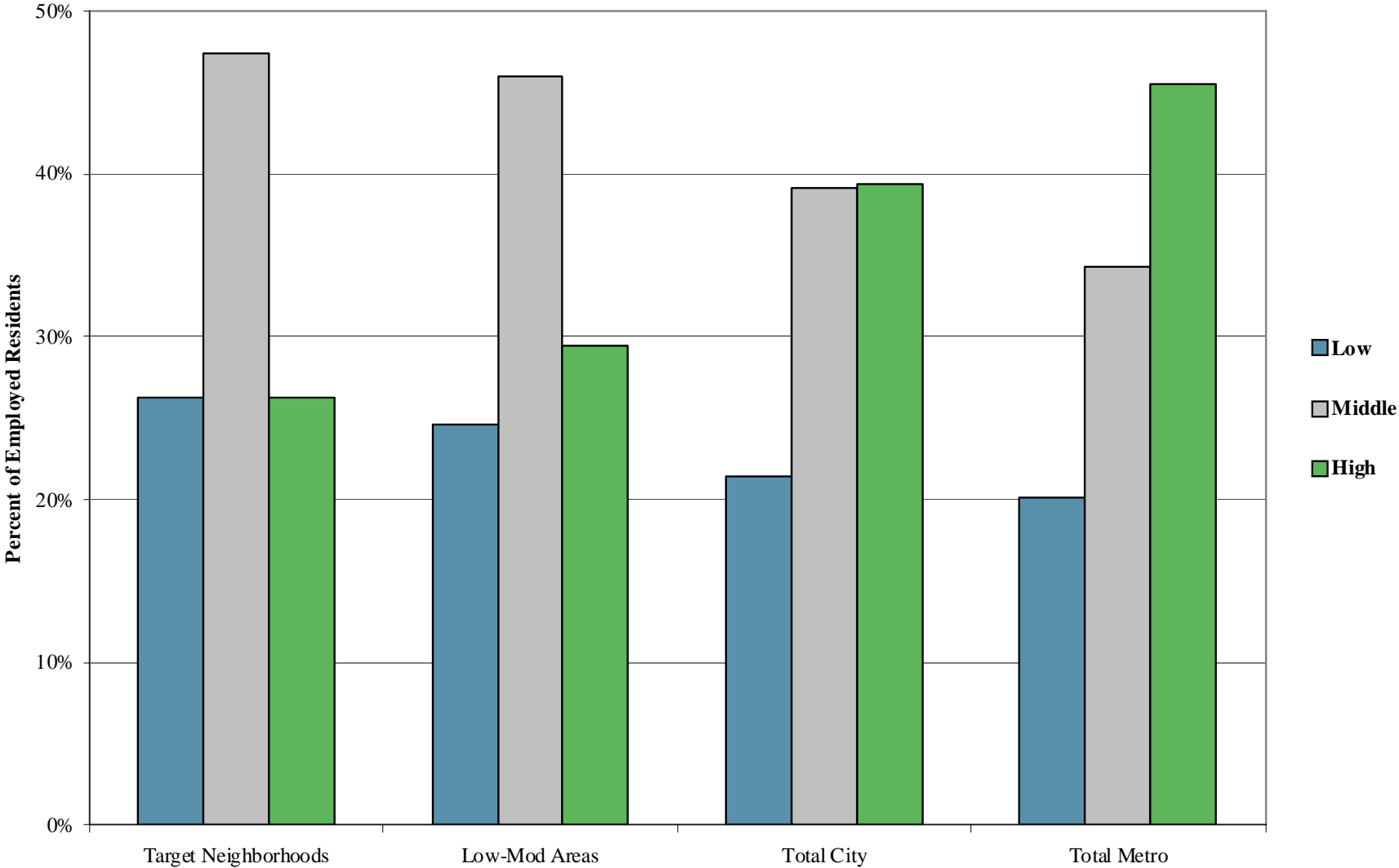
LED Variables

Jobs by Worker Age	Age 30 or younger Age 31 to 54 Age 55 or older
Jobs by Earnings Paid	\$1,250 per month or less \$1,251 to \$3,333 per month More than \$3,333 per month
Jobs by Industry Type (2-digit NAICS)	20 Total Industries

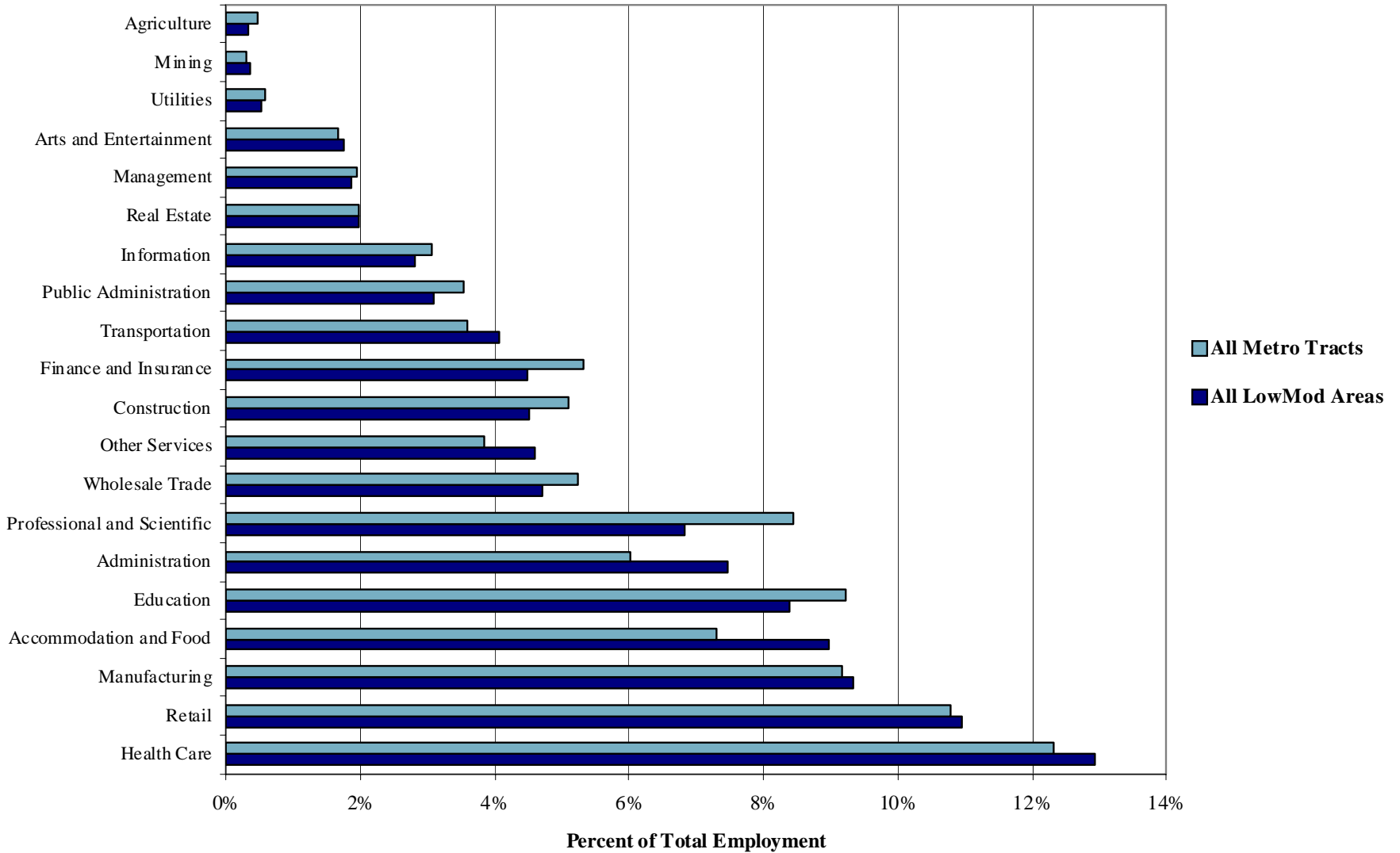
Percent of Employed Residents in Highest Earnings Category, Low-Mod Areas and All Metro 2008



Percent of Employed Residents by Earnings Category in Sustainable Communities Neighborhoods, 2008



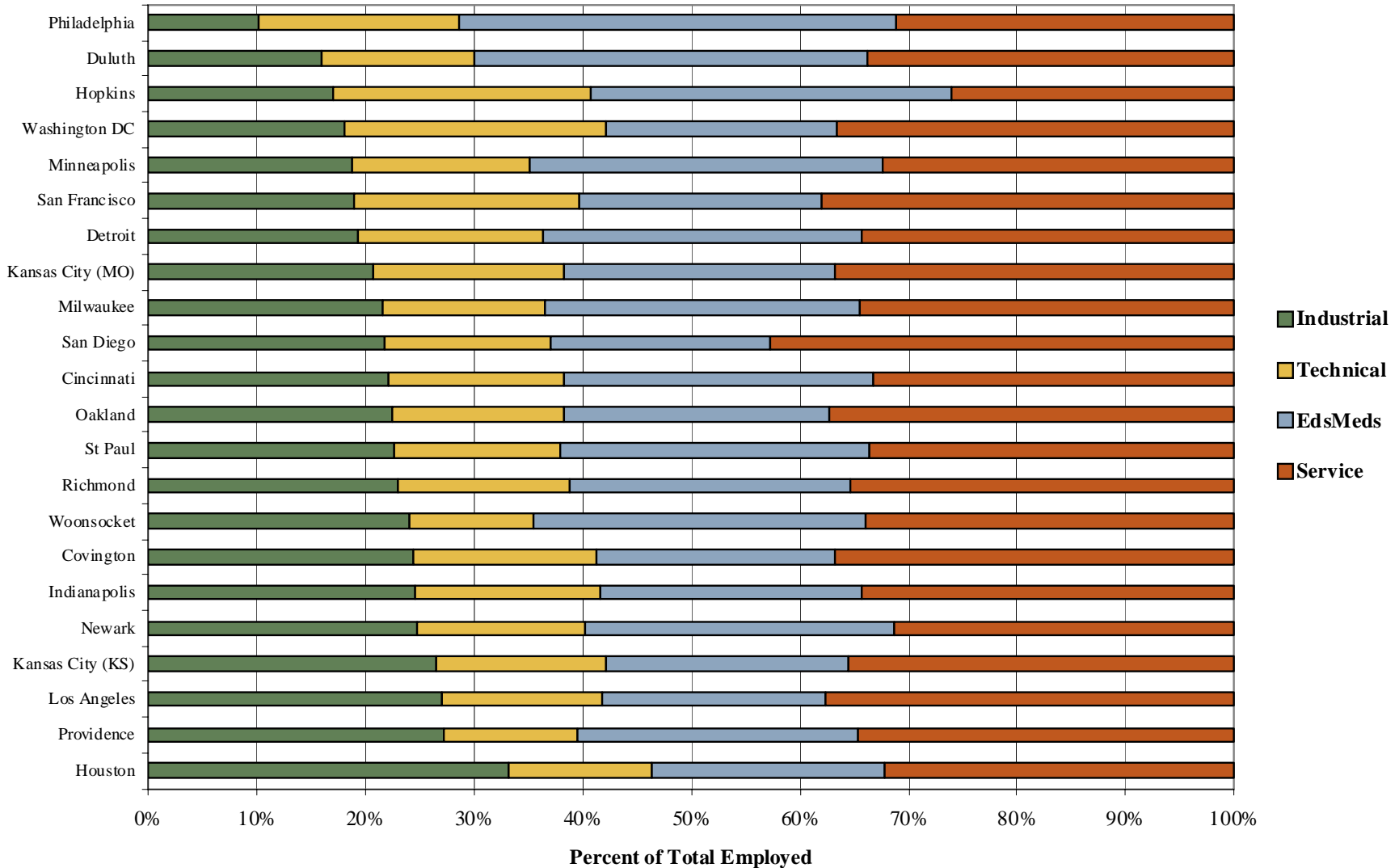
Percent Employed by Sector in Selected Metropolitan Areas and Low-and-Moderate Income Areas, 2008



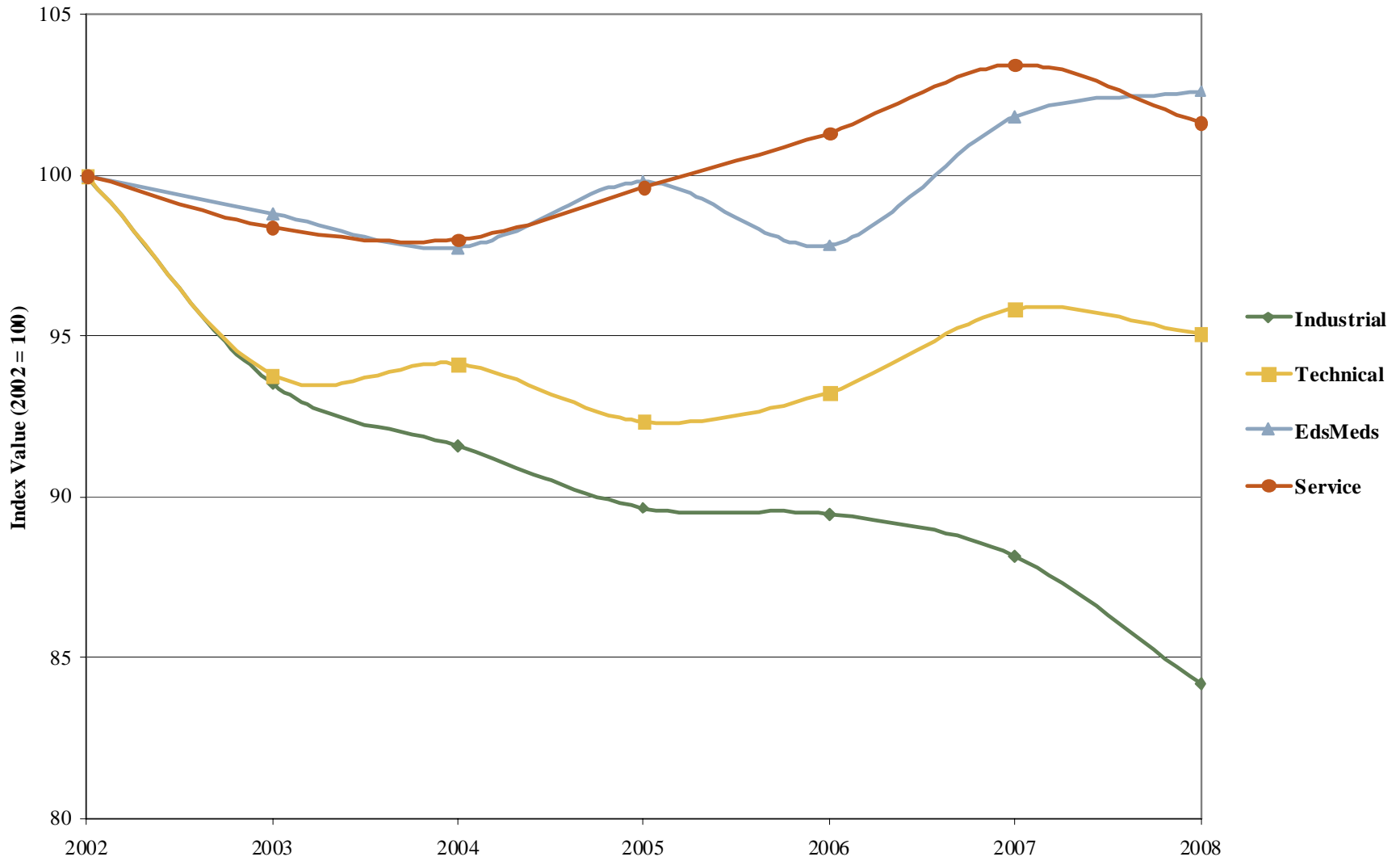
Industry Groups

Industrial	Construction Manufacturing Transportation Wholesale
Technical	Finance & Insurance Information Professional & Scientific Public Administration
EdsMeds	Education Health Care Management Real Estate
Service	Administration & Support Arts & Entertainment Food & Accommodation Other Services Retail

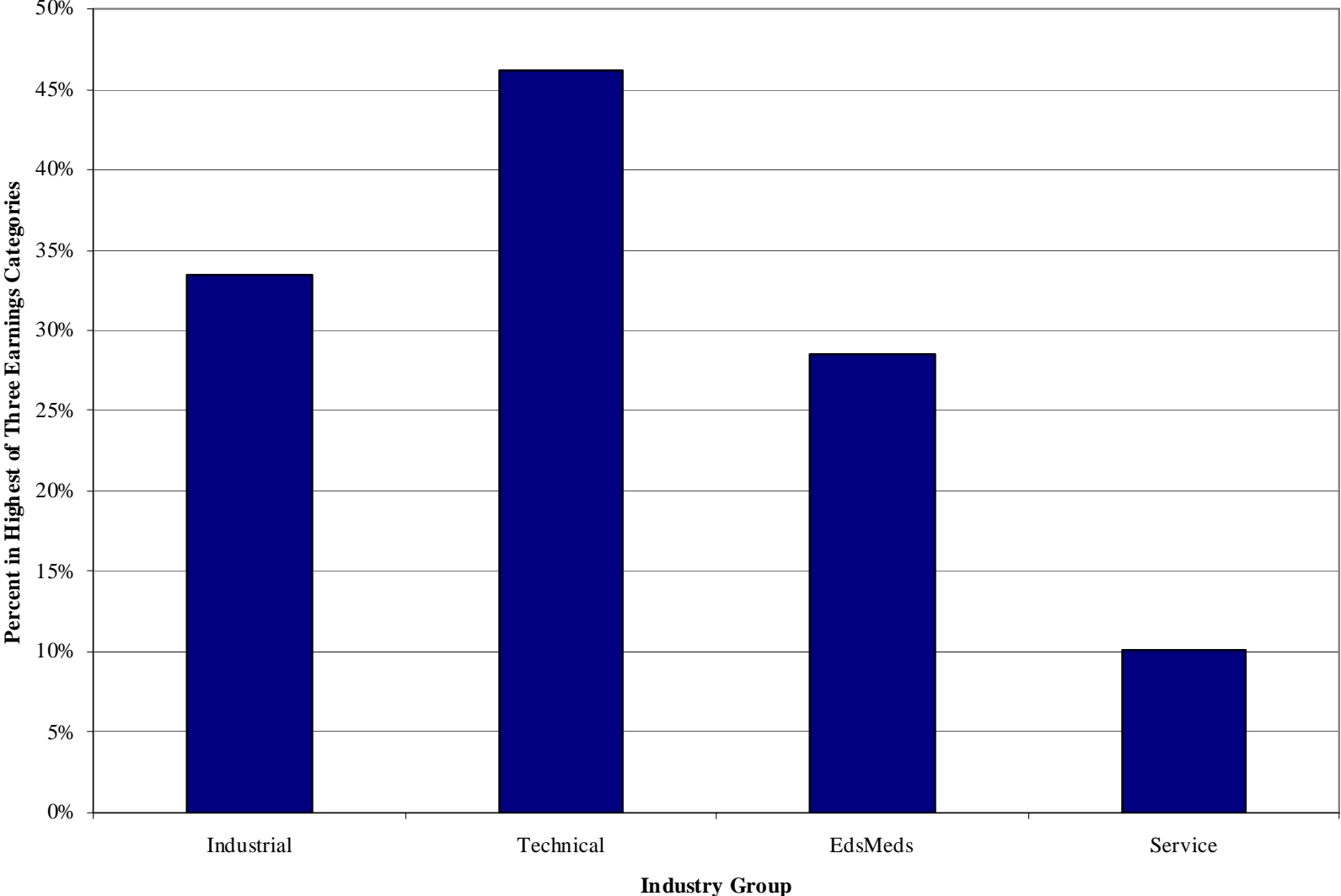
Sustainable Communities Neighborhood Employment by Sector Group, 2008



Change in Resident Employment by Sector Grouping in SC Target Neighborhoods 2002-2008



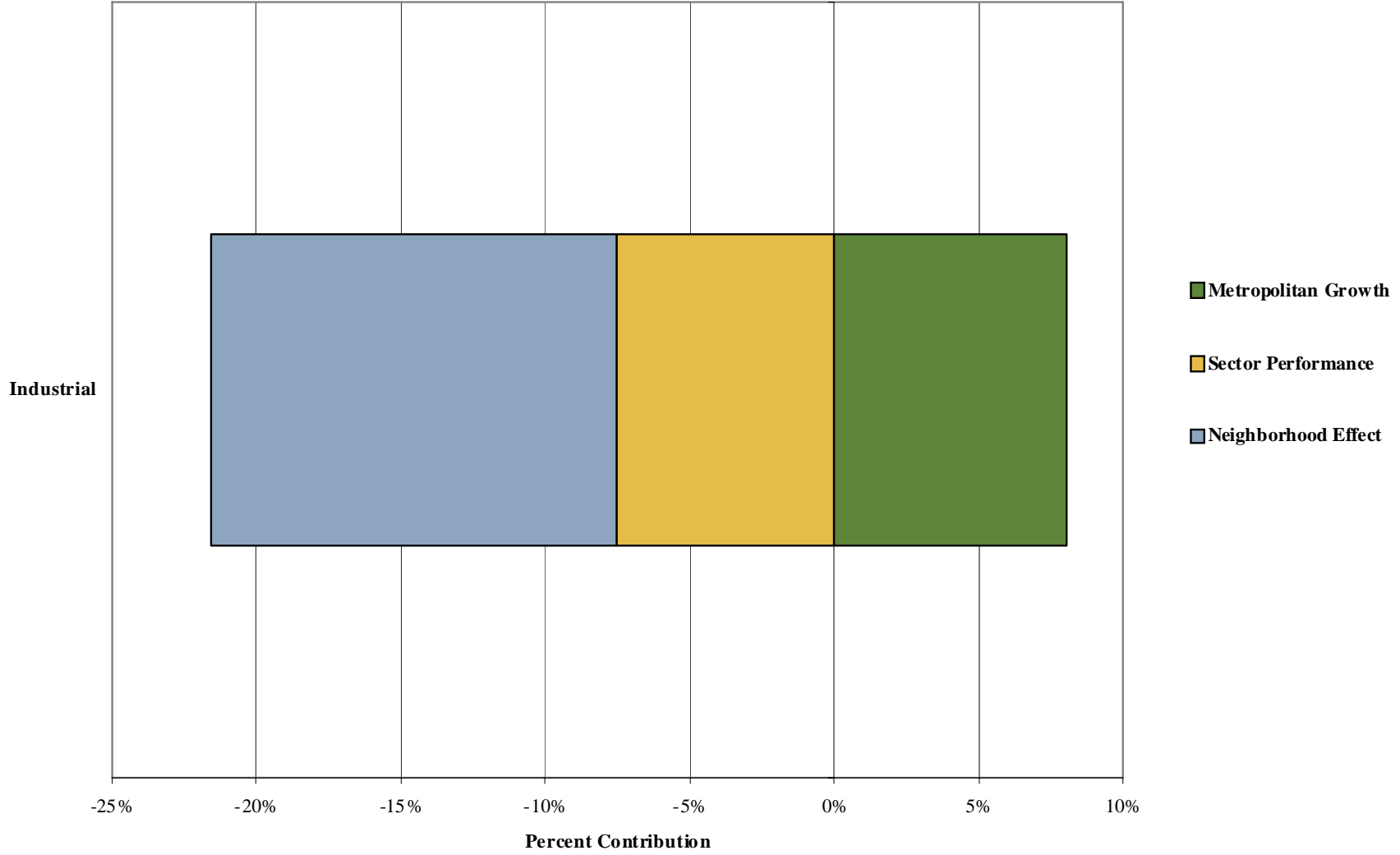
Percent of Employed Residents in Highest Earnings Category by Industry Group in SC Target Neighborhoods, 2008



Resident Employment Shift-Share Analysis

- **Metro Share**
 - If resident employment in manufacturing increases in neighborhood X by same percentage as total employment in metro area, how many jobs would you gain/lose?
- **Industry Mix**
 - If resident employment in manufacturing increases in neighborhood X by same percentage as manufacturing employment in metro area, how many manufacturing jobs would you gain/lose?
- **Neighborhood Shift**
 - Is there something about neighborhood X that makes it favorable or unfavorable for resident employment in manufacturing (migration, etc.)

Shift Share Contributions to Neighborhood Employment Change in Industrial Sectors in all Indianapolis Sustainable Communities Neighborhoods, 2002 - 2008



Shift Share Contributions to Neighborhood Employment Change in Industrial Sectors in Indianapolis Sustainable Communities Neighborhoods, 2002 - 2008

