

***NNIP***

***Partner Reports***

***October 2007***

NATIONAL NEIGHBORHOOD INDICATORS PARTNERSHIP  
AND THE URBAN INSTITUTE



# **Atlanta**

## ATLANTA NEIGHBORHOOD INDICATORS PROJECT

October 2007

**1. Key Accomplishments Since January 1, 2007.** The Atlanta Neighborhood Indicators Project has spent much of the year continuing its planning efforts for a revived and reinvigorated Atlanta Neighborhood Indicators Project. Led by the Community Foundation for Greater Atlanta, Inc., and the Annie E. Casey Foundation's Atlanta Civic Site, a small steering committee has been meeting to discuss issues pertaining to the governance, financing, operations, and roles and functions of ANIP. That group includes representatives from the Atlanta Regional Commission, the City of Atlanta, Emory University, and Georgia State University. A consultant (Marga, Inc.) worked with the group through June of 2007 to help facilitate discussion of these issues. At its March meeting, the steering committee authorized a small grant (\$35,500) to Emory University to assist in the acquisition of hardware and software to be used in the development of a pilot web site for ANIP. In May, the ANIP (Marga and Emory University) conducted a series of focus groups with potential ANIP users, designed to gather input from a diverse group of nonprofit service providers on their data needs, their interests in the data and services that might be provided from an ANIP web site, and their thoughts on how ANIP should address geographic coverage (extend beyond the city of Atlanta?) and the substantive topic areas for which data would be available. As a follow-up to the focus groups, a survey was sent electronically (Community Foundation, Atlanta Regional Commission) to a wide range of stakeholders (primarily in the nonprofit sector) to gather additional input on the topics discussed in the focus groups. In addition, the Community Foundation arranged several meetings with potential board chairs to present the ANIP concept and recruit their participation in the ANIP initiative. Copies of the focus group protocol and survey instrument are attached.

**2. Important Reports and Data Presentations.** Since ANIP is still in an early formative phase, there were no reports or data presentations during the current reporting period.

**3. New Analysis/Program Efforts.** Emory University, on behalf of ANIP, was recently selected by the Urban Institute and the Annie E. Casey Foundation to participate in the school readiness and success initiative, which will allow ANIP to begin to build out its data holdings in this substantive area as well as to begin to develop more formal relationships with a variety of organizations and agencies concerned about school readiness and early child learning. Emory is also continuing its work as the Atlanta partner of the Urban Institute/Annie E. Casey Foundation's Reentry Mapping Network. Initial data tables and maps will be submitted to the Urban Institute in November along with a draft report and the final report will be submitted by the end of December 2007.

**4. New Data Acquisitions/Web Site Improvements.** As part of its work on developing a web site pilot for the ANIP, Emory University is nearing completion of the Atlanta Neighborhood Fact Book. Based on the 2000 census, the fact book presents a variety of demographic, social, economic, and housing data for the city of Atlanta, Atlanta's 24 Neighborhood Planning Units, and the city's 137 neighborhood data collection areas. The fact book will be available in static

format (pdf pages) and also in an interactive format in which ANIP web site users would be able to download one or more indicators at various geographic levels. This will be ANIP's first tangible product and though limited to census data and the geography of the city of Atlanta, will present users with a model of how a wide range of data can be compiled and presented at the neighborhood level.

**5. Upcoming Events/Activities to Showcase NNIP.** The ANIP intends to spend much of its time during Fall 2007 engaged in board recruitment, fundraising, and continued development of the ANIP pilot web site. As we reach out to other interested stakeholders either directly (fundraising, board recruitment) or indirectly (market research with potential ANIP web users), we will have the opportunity to showcase NNIP and its potential for Atlanta.

## ***Baltimore***

### BALTIMORE NEIGHBORHOOD INDICATORS ALLIANCE

October 2007

1. What are your key accomplishments since January 1, 2007 (headlines)

BNIA-JFI continues to provide information, data, and other services to a variety of community and neighborhood groups, educational institutions, and other organizations as part of its mission.

BNIA-JFI has served on the Baltimore City Mayor's Base Realignment and Closure (BRAC) Commission which produce a series of City recommendations around the expansion of two military bases in Maryland.

BNIA-JFI is serving on the Mayor's Cleaner Greener Commission. BNIA-JFI was responsible for developing the indicators that will be tracked as part of this initiative. Furthermore, BNIA-JFI will be providing the analysis and dissemination of the Cleaner Greener indicators for the City.

BNIA-JFI served on the City's Comprehensive Economic Development Strategy Commission. The goal of this commission was to update the City's economic development plan. BNIA-JFI has been retained to provide the evaluation of the City's economic development strategy.

BNIA-JFI has been asked to participate in the Maryland Department of Health and Mental Hygiene's (DHMH) Environmental Health Tracking Program (EHPT). BNIA-JFI will provide technical assistance in the development of non-health indicators that will be used as part of this program and in providing GIS services.

2. What important reports have you produced? What important data presentations have you delivered?

BNIA-JFI made a presentation on the use of community and neighborhood data and indicators to the DHMH EHPT conference held in Baltimore City.

BNIA-JFI produced a community needs assessment report for Baltimore City Healthy Start, Inc. This report examined socio-economic, housing, and health data for four communities in Baltimore City. The goal of this report was to determine the communities where Healthy Start should expand their maternal and child healthcare programs.

BNIA-JFI created a series of maps for the Baltimore Empowerment Zone. These maps updated previous maps created for the six Village Centers in Baltimore City.

As part of a competition to become a Baltimore City Healthy Neighborhoods, BNIA-JFI was retained by Healthy Neighborhoods to provide current and historical housing data for all neighborhoods that applied to the program.

3. What new analysis/program efforts are you working on?

BNIA-JFI has been asked to provide data tracking, indicators analysis, and program evaluation services to Chesapeake Habitat for Humanity (CHH). CHH is partnering with Thrivent Financial to receive a \$1 million grant to build homes in East Baltimore. BNIA-JFI will also be working with Success Measures in identifying the indicators to be tracked as part of the evaluation.

BNIA-JFI is working with the Baltimore Educational Research Consortium (BERC) to provide socio-economic indicators at the community and census tract level for Baltimore City. This data will be used to provide several analyses for the Baltimore Public School System. BERC currently has access to two cohorts of City public school student records at the individual level. In addition to providing data, BNIA-JFI has been asked to provide a narrative as to BNIA-JFI's ability to house the City Public School student data.

BNIA-JFI is providing data from Vital Signs to the Johns Hopkins University School of Sociology. The data is at the census tract level.

BNIA-JFI continues to work with Social Compact, the Baltimore Development Corporation, and the Baltimore City Department of Planning in conducting a Baltimore City "drilldown".

As part of the Associated Black Charities More in the Middle Initiative, BNIA-JFI is creating a dashboard report examining and detailing the gaps between population groups in Baltimore City. The report will also examine existing research conducted on the African-American middle class in Baltimore and in the State.

4. Have you acquired new data (other than routine updates)? Have you completed any notable system or web site improvements? Please describe.

BNIA-JFI has received several new datasets from Baltimore City Citistat. These include data for the Cleaner Greener Initiative. Other data includes information as to dog attacks, bites, and aggressive animals.

BNIA-JFI is currently in the process to finalize an agreement with the Maryland Department of Health and Mental Hygiene to access individual health record data for the State of Maryland.

BNIA-JFI has proposed to house the student record data from the Baltimore City Public School System (BCPSS) that is currently being used by BERC. BNIA-JFI would also house all future data received from BCPSS that will be used by BERC.

BNIA-JFI is working with the Center for Community Technology Services (CCTS) of the University of Baltimore to update and improve the BNIA-JFI website. In addition, BNIA-JFI has

been asked by the Maryland Department of Transportation to add an interactive mapping feature similar to Google maps/earth for Baltimore City. We are working to identify features, costing, and funding sources for changing the BNIA-JFI website.

5. What upcoming events/activities (with dates) present an opportunity to showcase NNIP?

BNIA-JFI will be participating in a service provider's event hosted by the Baltimore City Department of Social Services on October 24th at the B&O Railroad Museum. This event is open to community groups, government agencies, non-profits, and social service providers in Baltimore City.

# ***Boston***

## BOSTON INDICATORS PROJECT

October 2007

### 1. Key Accomplishments

- The Boston Indicators Project released its 4th biennial report (2004-2006) as a printed summary and interactive website ([www.bostonindicators.org](http://www.bostonindicators.org)) at a major civic event in June. Project Director Charlotte Kahn presented key findings and Mayor Thomas M. Menino gave a keynote address followed by a panel moderated by Boston Foundation President and CEO Paul Grogan with local leaders such as MIT's President Susan Hochfield. The report links local challenges to global trends in population growth, energy consumption, economic competitiveness and climate change. It cites Boston's historic revolutionary role in each century (the American Revolution, America's Industrial revolution and the Information Age), calling on the region to exercise its capacity for innovative and revolutionary responses to seven "crisis/opportunity" pairings illustrated in statistical form.
- Following a decade of development, the Metropolitan Area Planning Council and Boston Indicators Project launched an online regional data repository and statistical system with GIS mapping capacity, MetroBoston DataCommon ([www.metrobostondatacommon.org](http://www.metrobostondatacommon.org)). With datasets organized by geographic layers and the Boston Indicators Project's 10 sectors, plus Zoning and Land Use, in mapable formats, it also includes, for novices, statistical snapshots and a map of each of Greater Boston's 101 cities and towns. MAPC and the Project are also working with GIS and software specialists at MIT to upgrade the site's usability and with computer scientists at UMass-Lowell to create and ultimately migrate to an open-source platform allowing for maximum collaboration among data providers and users throughout New England.
- In late 2006, the Project hired its first full-time Director of Research, resulting in better maintenance of data, in-depth analysis of summary and record level data, and added GIS capabilities. A research associate was hired in July to further enhance capacity.

### 2. Important Reports and Presentations

- The Project's Summary Report was presented at the OECD's 3rd "World Forum on Statistics, Knowledge and Policy: Measuring the Progress of Societies" in Istanbul in the "Global Cities" session, with the mayors of Istanbul and Madrid. Project findings are also being rolled out in a mailing to almost 5,000 community, civic and business leaders and a series of briefings and workshops. Project



Director Charlotte Kahn was also the keynote speaker at a regional indicators conference in Spokane, Washington, in April.

In addition to the above, the Boston Foundation, through its Understanding Boston series supports five to seven research reports each year, of which three particularly informed the work of the Boston Indicators Report. Each was released at a large forum and was covered extensively in the media.

- Geography and Giving: The Culture of Philanthropy in New England and the Nation (June, 2007, by the Boston College Center on Wealth and Philanthropy, re-examining measurement methodology in the field of philanthropy).
- The Boston Paradox: Lots of Health Care, Not Enough Health (June 2007, by the New England Healthcare Institute, combining indicators of the health status of residents and the health care economy).
- The Greater Boston Housing Report Card 2005-2006 (an annual report in the fall for the Commonwealth Housing Task Force, coordinated by the Boston Foundation, by Northeastern University's Center for Urban and Regional Policy that measures progress on housing benchmarks in 161 cities and towns in Eastern MA).

### 3. New Analyses/Efforts

- The Indicators Project is launching quarterly two-page "pipeline progress" reports in the fall of 2007 covering Housing, Economy/Jobs, Education/Workforce, and New Leadership/Diversity at forums that bring together Greater Boston's business, civic and political leaders to focus on issues crucial to the city's and region's future.
- In addition, longer (approximately 20-page) Report Cards will be created, beginning with an Education Pipeline Report Card for Boston and Massachusetts due out in late winter 2008.
- A new seminar/training module is in the early stages of development. It will focus on use of data for community change, relying largely on the Boston Indicators Project and the MetroBoston DataCommon.
- The Project is working with specialists at MIT and UMass-Lowell to create an open source, online regional data repository, with breakthrough analytical and display functionality, for use throughout New England, with the goal of making it easy to scale up in other regions. (See above, Accomplishments.)

#### 4. New Data, System or Web Improvements

- See #1, MetroBoston DataCommon
- The Project’s website was upgraded for the new report using Ektron CMS400, a .net platform with the potential to support access to the website from a variety of web devices. This allowed the production team to take advantage of efficiencies offered by “smartform” technology when building the website and for repurposing of content—eliminating version-control issues and reducing time spent on site maintenance and supporting greatly enhanced search capabilities. The Crosscut Filters use a new approach that presents a better visualization of the crosscut concept, and the Hub of Innovation received a technical upgrade with a homepage “Flash” entry into the sector innovations, with a cleaner, more consistent presentation accessible through a dropdown menu.
- Two Access databases have been established by the Director of Research:
  - The first catalogues research reports and important research-rich websites to inform website updates and to track external research by topic and other fields for later use;
  - The second tracks Project metadata, including sources, quality, and updates. Both databases are keyword searchable.
- The Project is beginning to work with 6-digit level NAICS employment data to better understand the role of certain sub-sectors (e.g., the Green Economy, the Creative Economy, the Life Sciences, Higher Education and so on) in the Boston and Massachusetts economies.

#### 5. Upcoming Events/Activities to Showcase NNIP

- In cooperation with MAPC and Northeastern University, the Project holds a biennial “Data Day: Using Data to Drive Community Change.” With its schedule thrown off in 2007 by MetroBoston DataCommon, it will resume in spring 2008 and bring together representatives of non-profit organizations, public agencies, civic and academic institutions to exchange best practices and experience new tools and active learning about using data for local decision making. Regional NNIP partners could be invited to showcase their work.
- Mention of NNIP and the best practices of some of its partners could be incorporated into the Project’s training programs.

## ***Camden***

CAMCONNECT

October 2007

1. What are your key accomplishments since January 1, 2007 (headlines)
  - Produced a number of data reports and summaries on demand for other Camden organizations to aid in their advocacy and education efforts (see below)
  - Annual member surveys showed continued appreciation and demand for CAMConnect
  - Board approved strategic plan to hire another staff member for data analysis
2. What important reports have you produced? What important data presentations have you delivered?
  - Produced Camden's Fiscal Outlook report, which examined trends in the municipal budget and Camden's reliance on special state aid. See <http://www.camconnect.org/resources/BudgetandTaxes.htm>
  - Presented data on risk factor indicators at conference sponsored by NJ Dept of Education called "Better Use of Data" forum
  - School-level profiles for 30+ Camden schools including information on enrollment, attendance, discipline, and achievement tests
  - Several short data summaries (QuickFacts) on topics including housing sales, American Community Survey data, immigration, and overview of Camden data for a funders' meeting
  - Analysis and summary of online worksite wellness surveys
3. What new analysis/program efforts are you working on?
  - Camden Facts neighborhood demographic reports are nearly complete – these provide the first updated Census tract level analysis of Census data, housing sales, EITC, vacant properties, etc. in over four years. See <http://www.camconnect.org/fact/CamdenFacts2007.html>
4. Have you acquired new data (other than routine updates)? Have you completed any notable system or web site improvements? Please describe.
  - Geocoded housing sales data from newspaper website to determine number of sales and median sales value by Census tract. See <http://www.camconnect.org/resources/CamdenHousingMarket.html>
  - Now have patient-level hospital discharge data from all Camden hospitals from 2002 through 2007
  - Created website repositories for several public policy issues, including reauthorization of Camden State takeover. See <http://www.camconnect.org/resources/MRERALegislation.html>

5. What upcoming events/activities (with dates) present an opportunity to showcase NNIP?

Camden Data Open House – December 7, 2007 – we are always looking for presenters for this event

# Chattanooga

## COMMUNITY RESEARCH COUNCIL

October 2007

1. What are your key accomplishments since January 1, 2007 (headlines)
  - CRC moves to University of Tennessee at Chattanooga campus, creates partnership with local university and endowment for future
  - CRC receives funding from Alfred P. Sloan Foundation to coordinate regional practitioners network on local government performance measurement
  - Brookings report on older, industrial cities features CRC analysis of Chattanooga turnaround
  - CRC report on TennCare changes draws statewide attention  
<http://www.researchcouncil.net/CRCTennCare.pdf>
  - CRC primer on uninsured in Hamilton County frames press coverage of President's visit to Chattanooga to promote tax credit program  
<http://www.washingtonpost.com/wp-dyn/content/article/2007/02/21/AR2007022101822.html>
  
2. What important reports have you produced? What important data presentations have you delivered?
  - CRC completed an evaluation of Hamilton County's Parents are First Teachers program. The evaluation used survey and administrative data and compared actual program utilization with areas of high need in the county.
  - CRC completed a comprehensive assessment of workforce needs for the Chattanooga Hamilton County Chamber of Commerce. The assessment included a historic trend analysis by industry, occupation and firm and a qualitative assessment based on interviews with some of the county's largest employers. The Chamber plans to use the assessment as it develops occupation-focused academy programs with the Hamilton County Department of Education.
  - CRC completed a diagnostic report examining the economic turnaround of Chattanooga over the last twenty five years for the Brookings Institution Metropolitan Policy Program. In addition, CRC contributed sections on Chattanooga and crime policy to the Brookings report, *Restoring Prosperity: The State Role in Revitalizing America's Older Industrial Cities*.
  - CRC completed *TennCare Reform, One Year Later*, a report on the impact of the 2005 changes in the State Medicaid program. The study found that changes resulted in significant increases in charity care and emergency department visits by uninsured residents.
  - At the request of the City of Chattanooga's Office of Multicultural Affairs, CRC completed a briefing paper on racial and ethnic disparities identified in the 2006 State of Chattanooga Region Report
  - Major presentations during 2007 have included:
    - A briefing for reporters at the *Chattanooga Times Free Press* on uses of data to track changes in communities

- A briefing for the Board of the Chattanooga Housing Development Organization on affordable housing issues in the region
  - A presentation at the Government Finance Officers Association (GFOA) conference on CRC's work on local government performance measurement
  - Presentation to Hamilton County's Infant Mortality Reduction Initiative Core Leadership Group on neighborhood indicators and poor birth outcomes.
3. What new analysis/program efforts are you working on?
- CRC is leading a year-long research effort on recruitment and preparation of teachers in Hamilton County public schools. The project, funded by two local foundations and in cooperation with the public school system, includes surveys of teachers, interviews with principals and other school system staff, interviews with deans of college education, roundtables with new teachers and education majors.
  - CRC is completing an analysis of reading in Hamilton County for the County's READ 20 program. The analysis includes a survey of 500 parents of children under 8, as well as extensive use of administrative data that is broken down both demographically and geographically.
  - CRC is completing a year long analysis of the economic impact and economic development potential of the Chattanooga Metropolitan Airport. The review includes a comparative analysis of other airports in midsize regions.
  - CRC is in the first year as an outcomes evaluator for a five year, federally funded local marriage and relationship education initiative
  - CRC is completing an examination of the role of broadband access as an economic development tool
4. Have you acquired new data (other than routine updates)? Have you completed any notable system or web site improvements? Please describe.
- CRC has compiled and coded Home Mortgage Disclosure Act. Neighborhood specific data (census tract level) was used to help a neighborhood revitalization project assess risk factors associated with sub prime lenders, home loans and home refinancing
  - CRC subscribed to Dun & Bradstreet online services providing access to data on more than 20,000 firms in the greater Chattanooga region.
  - CRC worked with the Tennessee Department of Human Services program for child care licensing to compile county-wide capacity for and quality of services for preschool age children
5. What upcoming events/activities (with dates) present an opportunity to showcase NNIP?

CRC plans to launch a series of brownbag lunches later this year. Programs will be open to UTC faculty, students and community and civic leaders.

CRC is also planning to host a conference of government and community based organization officials with a focus on local government performance measurement in late January 2008.

## Chicago

METROPOLITAN CHICAGO INFORMATION CENTER (MCIC)

October 2007

1. What are your key accomplishments since January 1, 2007 (headlines)
  - The MCIC website, [www.mcic.org](http://www.mcic.org), was re-designed to facilitate easier access to a wider variety of data and information.
  - The number of MCIC subscribers (people who register online to access free MCIC data, information and reports) grew by more than 40%.
  - MCIC collaborated with social service, philanthropic and civic organizations (both locally and nation-wide) on more than 50 separate research projects to generate new data and information on quality of life issues, understanding area demographics and population trends, neighborhood planning issues and policy-related work.
  - MCIC unveiled the Income Diversity Index, a new classification for measuring the context of neighborhood development. The index identifies four distinct patterns of income diversity in Chicago's 77 neighborhoods: emerging high income, emerging low income, bipolarity and stable diversity. This online information resource may be accessed at [www.mcic.org](http://www.mcic.org).
  
2. What important reports have you produced? What important data presentations have you delivered?

MCIC Reports (available at [www.mcic.org](http://www.mcic.org))

- More or Less: Chicago Regional Population Shifts 2000 to 2005
- Subprime Lending: American Dream or American Nightmare?
- Income Diversity in Chicago Neighborhoods
- Hurry Up and Wait: The High Cost of Commuting in Chicago

Data Presentations

- Chicago United Race and Business Forum Mch 7 Chicago
- International Community Indicators Conference Mch 7-9 Jacksonville, FL
- Community Media Workshop: Research to Craft Messaging June 14 Chicago
- Income Diversity Forum (co-presented with Harris Bank N.A.) July 25 Chicago
- URISA 2007 Conference: A Web Services Network for Cross-Jurisdictional Data Exchange Aug 7 Washington DC
- Chicago Partnerships for Public Health Aug 17 Chicago

3. What new analysis/program efforts are you working on?

The John D. and Catherine T. MacArthur Foundation: Documenting Change in Chicago Neighborhoods

MCIC has partnered with the MacArthur Foundation to develop, track and analyze indicators of community change in 16 Chicago neighborhoods. These 16 Chicago communities are the

focus of the New Communities Program, a revitalization effort funded by MacArthur and managed by the Chicago Office of the Local Initiatives Support Corporation (LISC), in an effort to bring about historic change in Chicago's most challenged neighborhoods.

#### The National Science Foundation: Ethnic Communities Survey

In-depth interviews with first generation Chinese, Philippine, Ukrainian, and Mexican immigrants to the Chicago area (urban and suburban) will help shed light on how immigrants influence their host societies, rather than the more customary "assimilation" study. MCIC is the data collection partner to a UIC / DePaul University / IIT collaboration.

#### Study of Older Adults

People who are 50 years of age and older are considered to be among the largest, healthiest, and best-educated population of American adults ever. Many are on the verge of retirement and looking for ways to maintain meaningful work throughout their later years. They are also looking for ways to maintain social contacts while addressing important social problems and strengthening their communities. The Chicago Community Trust engaged MCIC to design and conduct a survey of 400 older adults (ages 55 - 70) to take a fresh look at opportunities to create more ways for older adults to utilize their expertise and talents to address needs of their communities through paid and unpaid work.

4. Have you acquired new data (other than routine updates)? Have you completed any notable system or web site improvements? Please describe.

Datasets acquired since January 2007:

- 110th Congressional District Summary File
- 2003 Community Area Health Inventory (CAHI) data for the City of Chicago
- Chicago Department of Public Health (CDPH) Health Inventory data for the City of Chicago
- Chicago HMDA Loans 1990 – 2005
- Child Abuse and Neglect Statistics (Illinois) FY05
- Cook County (IL) Assessor Data 2000 and 2004
- Directory of Educational Entities in Illinois
- EASI Data 2007
- IL Department of Corrections (IDOC) Prisoner Release data 2004 – 2006
- InfoUSA Arts, Culture & Leisure 2006 (nation-wide)
- InfoUSA Church, Schools & Libraries 2006 (nation-wide)
- NCBG Capital Improvement Program data (planned & completed public works projects in Chicago) 1990 – 2004
- State Personal Income 1958 – 2005 (nation-wide)
- UIC Urban Transportation Center Obesity BMI Sprawl dataset 2005 (nation-wide)

5. What upcoming events/activities (with dates) present an opportunity to showcase NNIP?

None at the moment.



## ***Cleveland***

CENTER ON URBAN POVERTY AND COMMUNITY DEVELOPMENT,  
CASE WESTERN RESERVE UNIVERSITY  
October 2007

1. What are your key accomplishments since January 1, 2007 (headlines)

**New co-director** – Rob Fischer, the Center’s associate director for policy and evaluation is assuming the role of co-director after the appointment of Sharon Milligan to the position of Associate Dean of Academic Affairs for the Mandel School of Applied Social Sciences. Rob leads the Center’s program evaluation efforts which have included a comprehensive examination of Cuyahoga County’s community-wide “Invest in Children” program.

**Selected for NNIP School Readiness and Success Initiative** – The Poverty Center will participate in a cross-site initiative with seven other NNIP partners to study the impact of school readiness on early grade-school success for children living in low-income neighborhoods.

**New Poverty Center Website with blogging capabilities** – The Center has retooled its website to allow better access to the information and publications produced through web-logging and “Digital Case”. Digital Case is Case Western Reserve University’s digital library, institutional repository and digital archive. Digital Case stores, disseminates, and preserves the intellectual output of Case faculty, departments and research centers in digital formats (both “born digital” items as well as materials of historical interest that have been digitized). Additionally, the web-logging capabilities allow a centralized place where NEO CANDO updates, Poverty Center news, and information on new research can be posted and because the information is entered into a blog, other websites can then display the information.

<http://povertycenter.case.edu>

**NEO CANDO Success stories** – There are countless success stories about the way people who have used NEO CANDO to create and promote real change in their neighborhoods. The Center on Urban Poverty and Community Development has done a series entitled “NEO CANDO In Practice.” NEO CANDO users have been interviewed and their story is shared through a handout. Eight stories have been compiled and are being used in NEO CANDO trainings. So far, three stories have been released to the Poverty Center blog as well as the NEO CANDO online user group. Stories are being released on a monthly basis. Visit the Poverty Center blog to view these stories.

[http://blog.case.edu/msass/center\\_spotlight/poverty\\_center/index.html](http://blog.case.edu/msass/center_spotlight/poverty_center/index.html)

2. What important reports have you produced? What important data presentations have you delivered?

**Behind the Numbers, BRIEF NO. 6, Titled "Houses in transition: A report on properties owned by financial institutions and real estate organizations in Cuyahoga County, 2007,"** discusses the rapid rise in foreclosure rates and housing abandonment in Cleveland and its surrounding suburbs. This study found that as of March 1, 2007, 9,175 properties in Cuyahoga County were owned by Financial/Real estate organizations. This number was updated to 10,745 as of September 1, 2007.

[http://blog.case.edu/msass/2007/09/01/update\\_behind\\_the\\_numbers\\_brief\\_no\\_6\\_properties\\_owned\\_by\\_financial\\_institutions.html#more](http://blog.case.edu/msass/2007/09/01/update_behind_the_numbers_brief_no_6_properties_owned_by_financial_institutions.html#more)

The Poverty Center has released its May 2007 **Briefly Stated, "Space to learn and grow: Early care and education capacity in Cuyahoga County."** This document summarizes recent research which investigates the effects of County programs which promote increased capacity and quality in the region's childcare.

[http://blog.case.edu/msass/2007/08/07/briefly\\_stated\\_may\\_2007\\_space\\_to\\_learn\\_and\\_grow.html#more](http://blog.case.edu/msass/2007/08/07/briefly_stated_may_2007_space_to_learn_and_grow.html#more)

The "**Evaluation Projects Summary 2006-2007**" provides an overview of five studies conducted recently for Invest in Children. The five studies are (1) Child well-being study, (2) Child tracking study, (3) Early Learning study, (4) Child care capacity study, and (5) Child care quality study. These projects have allowed for the monitoring of children's status and have informed program development and refinement efforts.

[http://blog.case.edu/msass/2007/05/25/iic\\_evaluation\\_update.html#more](http://blog.case.edu/msass/2007/05/25/iic_evaluation_update.html#more)

The report, "**Neighborhood effects of low-income housing tax credit,**" by Center fellow Leslie Strnisha was completed for the Department of Housing and Urban Development. This report found that in some neighborhoods in Cleveland, scattered site low-income housing tax credit units had a negative effect on property values and in other parts of the city, there was no effect.

The Center has been involved in the **Greater University Circle Initiative**. This initiative was to study the changing social, economic, and property dynamics in the vicinity of Cleveland's University Circle neighborhood. University Circle is home to many of Cleveland's academic, medical, and cultural institutions and the neighborhoods surrounding this area are ripe for redevelopment. To keep the study ongoing, special geographies related to Greater University Circle have been incorporated into NEO CANDO.

**School Grounds as Community Parks: Can modifying the built environment increase physical activity levels?** This study, authored by Natalie Colabianchi, Audrey Kinsella, and Claudia Coulton, found that utilization was higher at the renovated playgrounds compared to the control playgrounds. Once at the playground, physical activity levels were similar regardless of renovation status. Although utilization was higher at the renovated playgrounds, absolute utilization was low 37 across all playgrounds studied. This report has been submitted to the academic journal, "Preventative Medicine."

Presented "**Center on Urban Poverty and Community Development: NEO CANDO**" to the Case Western Reserve University research community at the 2007 Research Showcase.

[http://ora.ra.cwru.edu/showcase/07\\_SHOWCASE\\_PROGRAM\\_FINAL.pdf](http://ora.ra.cwru.edu/showcase/07_SHOWCASE_PROGRAM_FINAL.pdf)

Presented **Residents Perceptions of Neighborhood and the Implications for Community Change**, authored by Kristen Mikelbank and Claudia Coulton at the 2007 Annual Meeting of the Association of American Geographers in San Francisco. The work is part of The Annie E. Casey Foundation's Making Connections Initiative.

[http://blog.case.edu/msass/2007/05/23/poverty\\_center\\_presentation\\_of\\_aec\\_study\\_at\\_07\\_aag\\_conference.html#more](http://blog.case.edu/msass/2007/05/23/poverty_center_presentation_of_aec_study_at_07_aag_conference.html#more)

3. What new analysis/program efforts are you working on?

**Social compact** – The Center will be submitting a proposal in conjunction with Social Compact to update and expand the indicators that were in the 2003 *Social Compact Drilldown* and to integrate the indicators and the process for estimating them into NEO CANDO. By integrating the Social Compact methodology with NEO CANDO, it will make it possible to periodically update these indicators in the future and will allow users in the community to tailor analyses and reports to their specific purposes.

**Pathways to/from foreclosure** -- Foreclosures are often precipitating events in the histories of vacant and abandoned houses, yet not all foreclosure filings lead to this worst case scenario and often a considerable amount of time elapses between these events. Moreover, foreclosures occur for a variety of reasons and the particular set of precursors to a foreclosure may be influential in the subsequent status of the property. By examining patterns of lending, sales, ownership, tax status, property conditions and occupancy before and after foreclosure filings and execution of sheriffs' sales, it should be possible to identify trajectories that present particular risk in terms of negative effects on the community. In particular, we will be looking for those patterns that are associated with high risk of foreclosure followed by prolonged vacancy, abandonment and deterioration.

4. Have you acquired new data (other than routine updates)? Have you completed any notable system or web site improvements? Please describe.
  - a. Zip code as geography – NEO CANDO census and administrative data can now be accessed at the zip code geography allowing for comparisons to other data only available at the zip code level, such as Business Pattern and IRS.
  - b. IRS tax return data – IRS data have been acquired and are being tested on the NEO CANDO development server.
  - c. Postal data on vacancies – The Postal Service/HUD data on number of vacant addresses have been incorporated into NEO CANDO.
  - d. Early Childhood Profiles – Indicators of interest to the study of early childhood have been compiled for each municipality in Cuyahoga County.
  - e. The following datasets are new acquisitions and have not been incorporated into NEO CANDO yet:
    - i. Building and Housing data from the City of Cleveland which includes information on code violations, demolitions, board ups, and condemnations at the parcel level.
    - ii. Cuyahoga County Recorder data which contains information on mortgages and other liens filed on specific parcels.
    - iii. Voter Registration data for the 17 county NEO CANDO coverage area
  
5. What upcoming events/activities (with dates) present an opportunity to showcase NNIP?

Claudia Coulton and Sharon Milligan are presenting **Poverty and Inequality in Cleveland, USA** at Durham University in Durham, England on September 11, 2007. Durham is located in Cleveland County, England.

Michael Schramm will be presenting at the following sessions at the **National Vacant Properties Conference in Pittsburgh** September 24-30 in Pittsburgh: Data for Change: Property Information Systems and Equitable Revitalization, Land Assembly for Neighborhood Development: A Community Development Initiative in Cleveland, and Early Warning Systems For Abandoned Property

Claudia Coulton will be presenting “**Unequal Places: Community approaches to understanding and addressing social disparities**” at the **Seabury Lecture** at the University of California Berkeley in December.

## ***Columbus***

COMMUNITY RESEARCH PARTNERS (CRP)

October 2007

### **Key Accomplishments since January 1, 2007**

- March 2007—CRP held a meeting of key funders to discuss their interest in coordination of community research. The funders indicated that it would be useful for CRP to establish a central repository for sharing community plans, assessments and surveys. As a result, CRP is building the research repository into the design of the new Community Indicators Database (CID) website.
- April 2007—Over 80 people attended a CRP forum to release *The Community Action Agency Research Report*, research on the changing demographics of poverty in Franklin County and the programs to address poverty.
- Since January, we have added to our staff three new research associates (Eben Dowell, Joe Poliandro and Tiffany Harrison) a project analyst/coordinator (Karissa Hanson-Morris) and a policy analyst (David Alstadt) whose work focuses on workforce issues in central Ohio.

### **Important Reports and Data Presentations**

- February 2007—*Clark County Indicators Database Feasibility Study*. Sponsored by the Clark County (Ohio) Funder's Forum, this report delineates the county's available community data resources and assesses options for creating a Clark County central data repository.
- March 2007—*Benchmarking Central Ohio*. This report compares the Columbus metro area with 15 other communities on 54 indicators that describe the characteristics of the population, economy, and quality of life. The report is intended to guide program and policy development, inform the community about how Columbus stacks up, and inspire the community to do better. Bobbie Garber, CRP Executive Director, has presented the report to numerous community groups including the Columbus Chamber of Commerce, the Columbus Foundation, and the Mid-Ohio Regional Planning Commission. The Columbus Partnership, which sponsored the report, will produce regular updates, and this initial report represents a baseline against which central Ohio can measure progress in future.
- April 2007—*The Community Action Agency Research Report*. This community needs assessment formed the basis for our community forum on poverty. Prior to public release, the report was included in the city/county task force's submission to the state in a successful bid for Community Action Agency designation.
- July 2007—*United Way of Central Ohio Racial Disparities Report*. This report updates the data and analyses from the 2003 *Racial Disparities* report prepared for United Way of Central Ohio (UWCO) by CRP and analyzes trends in racial disparities since the 2003 report. The report focuses on racial and ethnic disparities related to critical need areas identified by UWCO—Education, Employment, Health, Housing, and Safety.

## **Analysis/Program Efforts**

- Work continues on the Ohio Vacant Properties Study, sponsored by ReBuild Ohio. The study looks at auditor's parcel data and city administrative data (including lists of nuisance properties where available) as well as site visits and "windshield surveys" in 8 Ohio cities to assess the economic impact of vacant properties on cities.
- CRP is working with the Mid-Ohio Regional Planning Commission (MORPC) to develop central Ohio's coordinated transportation plan, with emphasis on transportation services for the elderly, the disabled, and low-income job-seekers.
- Several smaller projects that rely on community data are in process, including (a) a geostatistical analysis of client distribution and service center utilization for Franklin County Job and Family Services, (b) a survey of demographic and workforce projections to 2018 for a YWCA racial justice initiative, (c) community profiles for six areas of the city identified by the Columbus Department of Development as "Priority Neighborhoods" and (d) an inventory of Franklin County teen pregnancy and parenting service providers for a new Columbus-area nonprofit.

## **New Data and System or Website Improvements**

- CRP will post five years' worth of vital statistics data from the Ohio Department of Health on DataSource at the end of September. These data represent a significant expansion of the data offerings on DataSource.
- CRP has developed a new Community Indicators Database (CID) website, making accessible in electronic format the data from our CID report, which up to now has only been available as PDF downloads. The CID includes "big picture" indicators at the county, MSA, state and national level and compliments the local agency data available down to the Census block group level on DataSource. CRP plans to unveil the CID website in November.
- CRP is working with Avencia, the host of DataSource, to enhance the system's functionality and upgrade the user interface. We are also beginning to plan for the possible expansion of DataSource to surrounding counties.
- We are developing an internal data tracking tool to integrate data from our various research and community data projects into a single, accessible inventory.

## **Upcoming Events/Activities**

- We plan to host a "CRP Partner Appreciation Event" on November 8, 2007, to recognize our community partners and funders. We plan to roll out the new CID website and demonstrate enhancements to DataSource at the event, focusing attention on CRP's community indicators work.
- NNIP gets a mention in DataSource workshops to place that system in the context of the Urban Institute's larger efforts.

## ***Dallas***

FOUNDATION FOR COMMUNITY EMPOWERMENT

October 2007

1. What are your key accomplishments since January 1, 2007 (headlines)

**Feminization of Poverty Public Policy Forum** – Collaborated with the YWCA to host a luncheon event attended by approx 700 people. Program featured a white paper on the Feminization of Poverty, a keynote speech by Cupcake Brown, and a panel interview of three area women discussing their experiences moving out of poverty.

**Critical Years: Childhood Wellbeing in Dallas County** -- A comprehensive study of childhood wellbeing representing collaboration of researchers from various local institutions, the 200+ page report is in final production.

**Childhood Wellbeing Index** – Patterned after our Wholeness Index, the Childhood Wellbeing Index grew out of the Childhood Wellbeing Study and will allow us to track improvements in factors affecting childhood wellbeing over time.

2. What important reports have you produced? What important data presentations have you delivered?

**Feminization of Poverty white paper.** Presently the featured report at [www.dallasindicators.org](http://www.dallasindicators.org)

**Critical Years: Childhood Wellbeing in Dallas County.** In final production.

**Presentation to key players regarding Southern Sector Economic Development.**

Invited to present to a small gathering of around 30 key individuals in business and nonprofit convened to develop an action plan to address the significant disparities in development between the northern and southern sectors of Dallas.

3. What new analysis/program efforts are you working on?

**Interactive mapping and graphing for Dallas Indicators website.** In contract negotiations with software developers to merge Analyze Dallas (neighborhood level data engine) with Dallas Indicators (text-based) and add an interactive mapping and graphing component.

**Community Survey.** Just completed the pilot study for a comprehensive community survey of resident's attitudes, perceptions, and behaviors. Initial implementation will occur in South Dallas, the most distressed area of Dallas. Looking for funding to implement citywide, enabling comparison studies.

4. Have you acquired new data (other than routine updates)? Have you completed any notable system or web site improvements? Please describe.

**Dallas Indicators User Survey.** Recently launched a lengthy user survey with participant incentives to further encourage user feedback and document usage.

**Rate this Indicator feedback option.** Developed a user feedback icon, "Rate this Indicator" in an attempt to entice users to provide feedback on specific indicators.

**Reports showcase.** Significantly enlarged the reports showcase on [www.dallasindicators.org](http://www.dallasindicators.org)

5. What upcoming events/activities (with dates) present an opportunity to showcase NNIP?

**Institute Annual Conference.** 10/22/07. Learn more at [www.thewilliamsinstitute.org](http://www.thewilliamsinstitute.org)



# Denver

THE PITON FOUNDATION  
October 2007

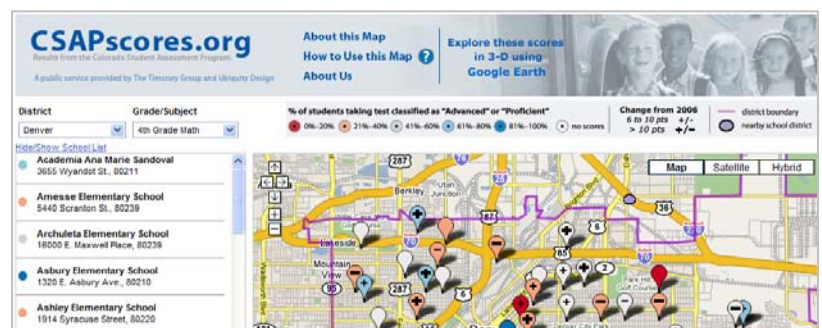
1. What are your key accomplishments since January 1, 2007 (headlines)

## Piton prepares for launch of new website (Part II)

The development of our new website has taken many twists and turns along the way. We were forced to change our launch date of October 2006 to October 2007. Both our initial developer, as well as a subsequent one, were unable to complete the project. Transitioning from developer to developer also proved to be a challenge because a new developer rarely wants to clean up someone else's mess. We have been working with our third developer since July of 2007 and we are finally seeing light at the end of the tunnel. The site is projected to publicly launch in October and is currently viewable at <http://pitoncms.civcore.com/>.

Functionality on our new site includes:

- Improved data retrieval tool for neighborhood and school level data
- An online graphing tool
- A flash based indicator mapping application
- A statewide school performance mapping application



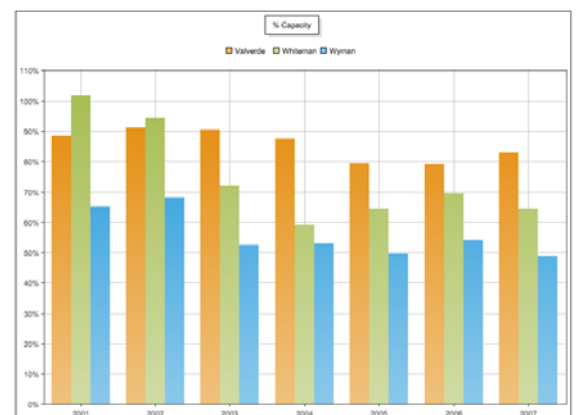
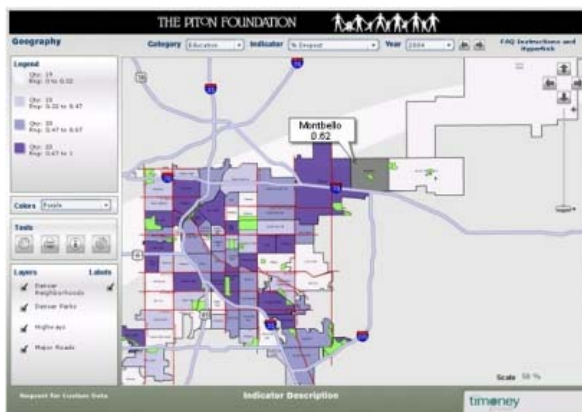
## Economic Well Being

[Download this data](#)

### Adult Education

INDICATOR	ATHMAR PARK	DEIVER	DATA YEAR	MAP
% Persons age 25+ with high school only education	28.0%	20.0%	2000	<a href="#">↕</a>
% Persons Age 25+ with college degree (Associates or Better)	12.1%	39.4%	2000	<a href="#">↕</a>
% Persons age 25+ with some college but no degree	15.9%	19.5%	2000	<a href="#">↕</a>
% Persons age 25+ with less than 12th grade education	43.9%	21.1%	2000	<a href="#">↕</a>

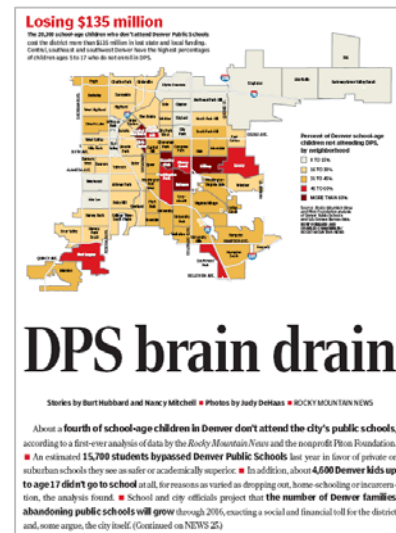
[Show Adult Education data definitions](#)



### **Rocky Mountain News Series: Leaving to Learn**

The Piton Foundation partnered with the Rocky Mountain News on a week-long series examining the impact of school choice on Denver Public Schools. The series, "Leaving to Learn: DPS' Enrollment Gap," which ran April 16-22, featured Piton's estimates of the school-age population in Denver to inform the analysis of where children in Denver are going to school.

The research showed that about one-quarter of school-age children in Denver are attending either private schools or suburban school districts. The topic of Denver parents "choosing" to send their kids to other districts or private schools throughout the metro area has become extremely important as the district faces a budget crisis; facilities with low enrollment are a severe drain on the system.



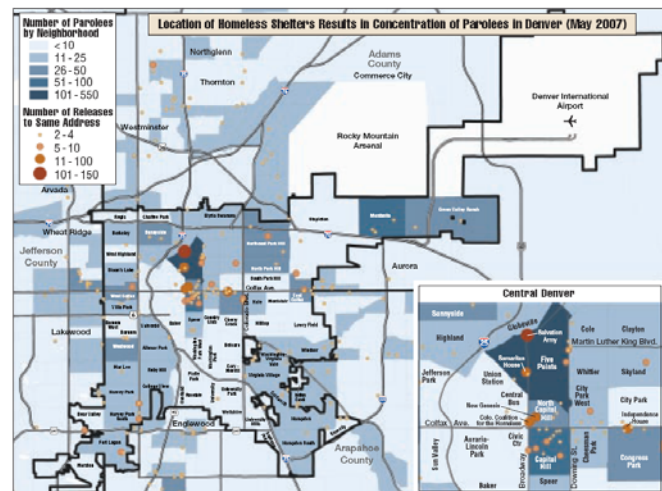
2. What important reports have you produced? What important data presentations have you delivered?

### **Barriers to Successful Reentry of Formerly Incarcerated Persons in Metro Denver**

Piton's recent analysis of data from the Colorado Department of Corrections and additional research with people on parole in the Denver area contribute to our understanding about the problems that formerly incarcerated individuals face as they try to reintegrate into society.

Key findings include:

- A quarter of people on parole in the metro area, more than one-third in Denver, end up in homeless shelters or other temporary housing.
- At least three-quarters had a history of drug problems before prison; 55% of those whose parole was revoked report continued substance abuse problems after release.
- People coming out of prison feel unprepared and without the support they need from their parole officers, families, or community organizations.
- Finding and keeping a job is the number one problem identified by people getting out of prison. Parolees cite lack of identification papers and driver's licenses, employers' reluctance to hire people with criminal records, and expenses associated with their parole as major work-related barriers.



### **Characteristics of Colorado’s Latino Community**

Piton staff delivered a presentation to the newly formed Latino Community Foundation of Colorado to educate the audience about the general demographic characteristics of Colorado Latinos as well as the specific issues of immigration, education, health, advocacy, and arts and culture. The presentation was very important as the foundation board was still in the process of considering “where” it wanted to focus its funding support. *(Note: final products are forthcoming)*

### **Statewide Education Reform Series<sup>1</sup>**

Piton and another local foundation, Donnell-Kay partnered to fund a series of reports to help inform the important work of the Governor’s P-20 Council and the next legislative session.

*Policy Mapping: Colorado and Tough Choices or Tough Times*, examines how closely the National Center on Education and the Economy (NCEE) recommendations align with existing Colorado statutes and to identify policy changes needed should Colorado choose to implement any recommendations proposed by NCEE. This report is intended to serve as a reference for policy-makers to gain a clearer understanding of the current education system compared to that which is articulated in Mark Tucker’s *Tough Choices or Tough Times*.

*Testing in Colorado: Time, Cost and Purpose*, presents a series of facts about testing in the state, followed by some questions that surfaced during the research, including:

- How well do our existing assessments measure what kids need to know in order to be successful in college and the workforce?
- Is the current amount of time and associated expense for testing adequate? Or, conversely, are we spending too much time and money testing kids? What is the appropriate balance (in time and money) between assessing what kids need to know through summative and formative assessments?
- How should assessment results be shared and how can we ensure that results are used in meaningful ways?

1. What new analysis/program efforts are you working on?

### **Immigration Issues Scan**

The Piton Foundation conducted an immigration scan during the summer of 2007 to identify and better understand the various issues affecting Colorado’s immigrant population and the communities where immigrants live. The scan involved a review of the literature, online research, data analysis, and a series of interviews with local experts. During the course of its research, Piton examined national and state policies, access to needed services and barriers to integration. Thus far, Piton has developed a presentation to help foundations better understand the immigration issue in Colorado,

---

<sup>1</sup> Reports authored by Augenblick, Palaich and Associates, Inc

particularly in the Denver-metro area, including a series of issue briefs that provide a more in-depth analysis of immigration-related issues, such as education, health, and economic development. Piton hopes to share this information with local foundations as well as service providers in the coming months. (*Note: final products are forthcoming*)

### **Rebuilding the American Dream**

Piton is working with the Bell Policy Center and Front Range Economic Strategy Center (FRESC) to develop a framing report to help shift Colorado public opinion supporting the lifting of low wage occupations into the middle class. The geographic focus will be the seven county metro Denver area with about half the state's population. The thrust of the overall frame will be: *Fair Wages and Benefits Create a Sustainable Economy*.

The report will:

- Underscore the lack of social and economic mobility,
- Describe the hidden social and economic costs to families, to communities, to schools, to cities, and to the state,
- Provide specific recommendations for change including concrete measures to uplift workers, to create a 21<sup>st</sup> economy that protects civil rights, particularly of those who are marginalized, and supports all families and children.

### **Research to Support Community Driven Education Reform**

Piton is working with two of Denver's local community organizations Metro Organizations for People (MOP) and Padres Unidos to develop new strategies to guide education reform in the near northeast quadrant (MOP) and the northwest quadrant (MOP) of Denver Public Schools. Research related activities include:

- Analysis of current schools in reform zones, best practice models, strategies & success of other zone reform strategies nationwide
- Media & technology support to MOP and Padres quadrant reform strategies
- Exposing MOP and Padres staff and leaders to best school & feeder reform strategies.

### **Economic Integration in Denver Public Schools**

The Piton Foundation commissioned a study, *The Impact of School-Level Poverty, Free and Reduced Lunch and English Language Learner Status on Reading and Writing Achievement Over Time*<sup>2</sup>, that analyzed the relationship between percent free and reduced lunch (FRL, or low-income) as well as English language learner (ELL) students and performance on standardized reading tests of students enrolled in Denver Public Schools (DPS).

Results demonstrated that the low income students with the highest scores were those in the lower poverty schools – and the low income students who scored nearly as well attended medium poverty schools. In fact, in all but the high poverty schools, the low

---

<sup>2</sup> Authored by: Pamela Buckley, Ph.D., The Piton Foundation, Elena Diaz-Bilello, University of Colorado at Boulder, Ed Wiley, Ph.D., University of Colorado at Boulder

income students' scores grew at the same rate as the no low income students within the same schools. Most notably, however, was that learning rates were steepest among ELL students who attended low and medium poverty schools. That is, ELL students attending medium and low poverty schools had a greater acceleration rate in reading and writing growth over the course of the study than their ELL peers in high poverty schools. *(Note: Report is in draft form and should be publicly available within the next month)*

#### **Immigrant Access to Higher Education.**

Piton will be supporting community partners Metro Organizations for People, Padres Unidos, and the Colorado Immigrant Rights Coalition to advocate for in-state tuition, and other policy solutions to increase access to higher education for immigrant students.

4. Have you acquired new data (other than routine updates)? Have you completed any notable system or web site improvements? Please describe.

#### **Colorado Department of Labor and Employment**

- Hourly wage Occupational Employment Statistics Survey Data for 2006 in Denver - Aurora MSA.
- May 2006 Metropolitan Area Occupational Employment and Wage Estimates - Denver-Aurora, CO.
- Short Term Occupational Employment Projections in Denver - Aurora MSA for a base year of 2006 and a projected year of 2008.
- Long Term Occupational Employment Projections in Denver - Aurora MSA for a base year of 2005 and a projected year of 2015.

#### **Aurora, Mapleton and Jefferson County Public Schools**

- Student level demographic data by place of residence (forthcoming)

5. What upcoming events/activities (with dates) present an opportunity to showcase NNIP?

## ***Des Moines***

CHILD AND FAMILY POLICY CENTER  
October 2007

1. What are your key accomplishments since January 1, 2007.

CFPC has strengthened its partnership with United Way of Central Iowa, which is the lead for the Annie E. Casey Foundation's Local Learning Partnership in the Making Connections Initiative. The new LLP Director, Terry Taylor-Wolfe, has moved forward in reaching out to community data partners and establishing renewed interest in building a stronger cross-agency data system (and a website) for Des Moines and central Iowa that includes GIS analysis.

CFPC also has been an active partner in Hedy Chang's work on early elementary absenteeism in eleven sites and has completed a preliminary analysis of early childhood questions from the Wave Two Making Connections survey for four sites. CFPC also has been providing requested information to the Leadership in Action program in Polk County that is further looking at ways to involve community members in school readiness activities.

2. What important products have you produced? What important data presentations have you delivered?

CFPC has produced several reports that include GIS analysis:

- A report on early elementary absenteeism in the Des Moines Public Schools
- An environmental scan of early childhood programs and services in Polk County, including health services, child care services, services for children with special needs, preschool programs, and parent education programs
- A draft "Business Plan" regarding workforce development programs in central Iowa
- A published version of the joint NNIP-SECPTAN toolkit on school readiness

CFPC has done a number of presentation to community groups, primarily on early childhood and school readiness services and activities. CFPC Director Charles Bruner and NNIP lead Tom Kingsley recently presented before the Local Learning Partnership on mobility and other factors affecting child and family well-being in Des Moines and Making Connections.

3. What new analysis/program efforts are you working on?

CFPC hopefully has finally secured from the Iowa Department of Human Services its child abuse and neglect data for Polk County and will do an analysis of that data. CFPC also has secured more recent corrections data and is updating its reports regarding justice systems involvement of Polk County adults.

4. Have you acquired new data (other than routine updates)? Have you completed any notable system or web site improvements? Please describe.

As indicated, CFPC is acquiring child protective service data. The LLP Director is focusing upon website development and there are new opportunities to have a productive partnership between CFPC and United Way of Central Iowa in NNIP work. Initially, the goal was for United Way of Central Iowa to be the repository of data and do basic GIS analysis, working with other data partners in the community. CFPC was to provide some technical assistance and do more detailed research and analysis related to the data. CFPC took on the data acquisition and repository roles, however, because United Way of Central Iowa never developed capacity to play that role. There is now renewed interest and much greater capacity and expertise within United Way of Central Iowa to take on a greater role in at least making the data available broadly (e.g. website development) and serving in a communicating and data securing role with partners.

5. What upcoming events/activities present an opportunity to showcase NNIP?

A good number of copies of the actual publication jointly produced by NNIP and SECPTAN will be provided to NNIP for distribution and use at meetings and with funders, as well as the opportunity for website posting. CFPC hopes that this can be one of a number of “signature” pieces for NNIP that can show NNIP’s collaboration with others in the field and NNIP’s particular expertise in the important arena of both democratizing and making neighborhood-level data available and using it to inform action.

## ***Grand Rapids***

COMMUNITY RESEARCH INSTITUTE, GRAND VALLEY STATE UNIVERSITY  
October 2007

1. What are your key accomplishments since January 1, 2007 (headlines)
  - Usability Test Groups and Launch of the new CRI website: test groups included neighborhood associations, nonprofit groups, human service providers, and local government agencies.
  - Engaging faculty in community applied research: CRI continues to develop relationships with faculty interested in working on community-related research projects. This year the CRI collaborated on two articles with faculty from the School of Public and Nonprofit Administration and has engaged faculty from Social Work, Criminal Justice, and School of Business in other community related projects.
2. What important reports have you produced? What important data presentations have you delivered?
  - Juvenile Crime and Delinquency Report: The City of Grand Rapids' Office of Children, Youth and Families (OCYF) secured a grant from the Dyer Ives Foundation to work with the CRI and the Grand Rapids Police Department to create the Grand Rapids Juvenile Offense Index. Preliminary results were presented to city officials and the report will be available on the CRI website at [www.cridata.org](http://www.cridata.org) in October, 2007.
  - Earned Income Tax Credit – 2007 Tax Filing Season Report: designed by the CRI and funded in part by the Dyer-Ives Foundation. It gathers client demographic and tax information used for the assessment of outreach efforts and gaps in services. On its third year, improvements were made to this data collection system and results were presented to members of the coalition. Report will be available on the CRI website at [www.cridata.org](http://www.cridata.org) in October, 2007.
  - West Michigan Regional Indicators: CRI participated on a regional effort to define and collect social measures for West Michigan. The project also included environmental and economic indicators. Pending upon funding, the second phase will include a 3-year work plan to update, explore more accurate and effective measures, comparison regions, and benchmarking. The data and report for this year is available at [www.wm-alliance.org](http://www.wm-alliance.org).
  - Using GIS in Conjunction with Binary Logistic Regression: Mapping the Adequacy of Prenatal Care Access in Grand Rapids, Michigan: an article produced in partnership with the School of Public and Nonprofit Administration using vital statistics data on live births in Grand Rapids between 1998 and 2003. A logistics regression model was employed to determine the significance of various independent variables associated with



inadequate prenatal care access as measured by the Kessner Index. The article will be available on the CRI website at [www.cridata.org](http://www.cridata.org) sometime in fall 2007.

- 2006 Evaluating Community Food Security in Kent County (released in May 2007): CRI provided data and mapping services. It examines various food assistance systems and raises questions about consideration of, additional analysis for future evaluations of food and nutrition issues. The report is available on the CRI website at [www.cridata.org](http://www.cridata.org).
  - Community Data Services: as part of its mission, CRI provides general data and mapping support to nonprofit and neighborhood groups, educational institutions, and other organizations.
2. What new analysis/program efforts are you working on?
- Analysis on Foreclosures in Kent County: CRI will be working with community partners to develop a streamlined methodology to analyze foreclosures and other housing related issues.
  - Ottawa County Community Assessment: CRI has been engaged by the Greater Ottawa County United Way and its partners to develop a streamlined methodology and provide data support for a community-based assessment of the health and human service needs within the county.
  - Maternal/Child Health: CRI is working in partnership with the Michigan Department of Community Health and the Institute for Healthcare Studies at Michigan State University to evaluate and improve policies directed at low-income pregnant women within the state. CRI's primary role in this effort has been the development of improved risk models for predicting poor birth outcomes using data mining techniques.
  - Substance Abuse Prevention. CRI has been engaged by the Kent County Substance Abuse Prevention Leadership Coalition to develop an integrative framework for data around the causes, prevalence, and consequences of drug and alcohol abuse in the county and at specified sub-geographies within the county. In addition, CRI will be conducting in-depth analyses on patterns and trends in drug- and alcohol-related arrests and will provide data support to the larger coalition effort to track key indicators.
4. Have you acquired new data (other than routine updates)? Have you completed any notable system or web site improvements? Please describe.

System and web site improvements:

- Launched the New CRI website: see section 1

- Open Source Programmer: Hired a fulltime open source programmer to improve CRI's competency in open source tools and development.
- Developed two online mapping demos for proof of concept: One uses MapServer, OpenLayers, and Java Scripts and the second one uses PlaceBase's PushPin technology. Both are being considered by local stakeholders including foundations, county and city government, and human service providers (i.e., United Way) – project proposals to follow.
- CRI Website Metadata System: an online database designed to store, search, and retrieve metadata information and related file-objects. The system allows CRI website users to search for information using keywords, provides suggested tags for related content, view specific search results with extended metadata information, and downloads. The system is designed to also provide CRI staff with reports on “next updates” and source contact information. You can see and use the tool by using the “Search CRI Data” tool at [www.cridata.org](http://www.cridata.org).
- An online-collaborative space: CRI is implementing TWiki (<http://twiki.org/>), as an online knowledge management and collaborative tool and is used by CRI staff and external groups to document and share project related information via the Internet. TWiki is an open source alternative to Microsoft SharePoint or Google Documents.

New data acquisition:

- County-wide parcel layer: CRI formalized a data sharing agreement with Kent County IT department allowing access to various county's GIS layers (i.e., parcels). The agreement also facilitates conversations and access to other county offices including the assessors' office for housing sales and foreclosure data
  - Congregation Census: a list of all “places of worship” in Kent County. This data layer was developed in partnership with the Richard DeVos Foundation, students from Calvin College, and CRI. Students were sent into communities to identify, survey, and photograph churches of Kent County. Over half of the county was covered including all urban and suburban areas.
5. What upcoming events/activities (with dates) present an opportunity to showcase NNIP?
- Neighborhood Associations of Michigan: presenting opportunities and challenges for accessing and using neighborhood level information (September 28th – 29th, 2007). More information at <http://www1.cj.msu.edu/~outreach/namich/>

## ***Hartford***

HARTFORD INFO, HARTFORD PUBLIC LIBRARY  
October 2007

1. What are your key accomplishments since January 1, 2007 (headlines)

Four new data sets are now available from our home page (data from the Department of Social Services, Hartford Police Department, Vital Statistics, and HMDA data). Historical arrest data (2000 -2006), and teen birth data are particularly notable additions.

The number of news articles, websites and documents has increased by 84% in the last year.

Zip code maps have been added to the web site.

2. What important reports have you produced? What important data presentations have you delivered?

HMDA data reports:

[http://www.hartfordinfo.org/Issues/wsd/HomeOwnership/wsd\\_030107.asp](http://www.hartfordinfo.org/Issues/wsd/HomeOwnership/wsd_030107.asp)

3. What new analysis/program efforts are you working on?

We are developing our capacity to do interactive mapping.

We have added streaming video of community events to our web site.

4. Have you acquired new data (other than routine updates)? Have you completed any notable system or web site improvements? Please describe.

We are producing a quarterly electronic newsletter.

Print function has been added to articles on web site.

Neighborhood maps on the neighborhood profile pages were updated.

We sponsored a number of community programs supported by data and information on our web site on topics including Property Taxes, Juveniles in the Criminal Justice System, Hartford's Next Generation of Development, Hartford 2010 press Conference, Mayoral Candidates forum, Pardon forum.

5. What upcoming events/activities (with dates) present an opportunity to showcase NNIP?

City council candidates forum August 29 & October 29, 2007

Democracy in Action September 2007

Mayor candidates forum September 6 & October 23, 2007

## ***Indianapolis***

THE POLIS CENTER

October 2007

1. What are your key accomplishments since January 1, 2007 (headlines)
  - Local Boys & Girls Club acquires \$570,000 21<sup>st</sup> Century Community Learning Center grant to develop 2 additional after-school sites in Indianapolis using SAVI in the grant application.

The Boys & Girls Club used SAVI to identify community needs, areas with high crime, social trends, and family structure, all critical to their grant application. "I don't know how I would've gotten the information if SAVI didn't exist."
  - Increased website user registrations by almost 180 users (from 1,028 to 1,206).
  - Trained over 100 people representing non-profit organizations, libraries, government, and education.
  - Nearly 200 registered for the 3<sup>rd</sup> Annual SAVI Users Conference: Using Local Information for Community Change scheduled for Oct. 2

This year's conference features presentations by several NNIP partners, including Urban Institute, Des Moines, Milwaukee, Nashville, and New Orleans. Addressing this year's theme, topics include neighborhood engagement, early childhood school readiness, emergency response, national trends, foreclosures, public health, human services planning, and more. We identified 3 major partner organizations to facilitate breakout sessions and help promote the event. Registrations have nearly doubled over last year.

- Developed a demonstration website that utilizes a caching service and Google Maps to increase interactive mapping performance and usability

We continue to test and explore the caching service technology that will greatly improve the speed of web mapping services. It combines middleware technology, which allows you to integrate data stored on distributed servers, with a web map cache server, which provides greater performance when viewing the data on these distributed servers and allows constant access to the data even when it is not available from the source server. Currently, the technology is being tested on point, line, polygon, and raster data and will eventually also include shaded data (such as the data available on SAVI shaded by census tract). This technology will be integrated into SAVI in the future, providing a much faster map rendering and navigation comparable to Google.

- Conducted several user interviews to gather feedback from various types of organizations to understand their use of SAVI, level of satisfaction, and value of SAVI to their organizations.
2. What important reports have you produced? What important data presentations have you delivered?
- 2006 Annual SAVI Usage Report. This report provides a running summary of our SAVI audience, the ways in which various sectors have used SAVI, and outcomes as a result of their use. See attached.
  - Written recommendations for a 2006-2007 public health needs assessment funded by the Richard M. Fairbanks Foundation to make SAVI a richer resource for public health information.

This needs assessment confirmed that there is significant local demand for more health-related information in SAVI and identified partnerships and data sources for meeting those information needs. Based on the feedback and data availability, we will be adding several relevant data layers to SAVI during the remainder of this year, including more health facilities, county-level cancer data, obesity survey data, a new neighborhood boundary, neighborhood level vital statistics, and food source locations (e.g., fast food restaurants, grocery stores, etc.).

- E-newsletters: <http://www.savi.org/savii/about/news.aspx>
3. What new analysis/program efforts are you working on?
- Indianapolis Quality of Life Indicators project

Marion County Health Department contracted with Indiana University, through the collaboration of four community-focused research centers at IUPUI, to develop a user-friendly, interactive Web portal to offer citizens and community leaders convenient access to easily understandable information and expertise regarding health and quality of life in Marion County. This site will provide ways for interested parties to engage in a wider community discussion of these issues and to develop citizen-based strategies to address problems. This website should increase public awareness and involvement in issues important to the health and well-being of Marion County citizens.

It will provide informative content, easily understandable dashboard indicators, health news, best practices, and community-building tools such as online discussion forums and online surveys to engage citizens, policymakers, and professional groups. Although initially focused on health-related information, the portal will be designed from the outset to accommodate a full range of community issues and indicators, which will permit a comprehensive view of the Indianapolis region and, eventually, the state.

Topic areas on the site include: Arts, Culture and Recreation; Community Development; Demographics; Economy; Education; Housing International Connections; Natural and Built Environment; Non-profits and Philanthropy; Public Finance and Government; Public Health; Public Safety; and Transportation.

The four collaborating centers include The Polis Center, the Indiana Business Research Center, the Center for Urban Policy and the Environment, and the Center on Philanthropy at Indiana University. This site will provide a high-level view of quality of life issues in Marion County and will draw upon data, reports, and mapping in SAVI.

4. Have you acquired new data (other than routine updates)? Have you completed any notable system or web site improvements? Please describe.

New Data Acquisition:

- Food source locations (grocery stores, fast food restaurants, etc.) from Marion County Health Department
- Adult Obesity Survey data by county and by 19 health planning units from Marion County Health Department
- More health facilities locations from Indiana State Department of Health
- County-level cancer data from Indiana State Department of Health
- A new neighborhood boundary developed by the City of Indianapolis. This boundary will allow us to summarize most of our data by neighborhoods as statistical reporting units.
- Toxic waste sites from Indiana Department of Environmental Management
- Playgrounds from IMAGIS
- Local Health Departments from NACCHO
- New categories in HMDA data: Prime and Sub-Prime loans
- New category in UCR: violent and property crimes

Website Improvements:

- New Build a Custom Community Tool: This powerful new tool allows users to define their own geographic boundary, view it on the map, narrow their data to just this area, and view a community profile customized to this geographic area. It allows users to build their community using several building blocks (census tracts, counties, townships, school corporations, and more). They can build it from a list of geographies, click on the map to select, select by specifying a distance around an address, and select by specifying a distance around an asset. This tool will allow users to obtain data specific to their community of interest for grants, planning, community assessment, and much more.
- New Charting Tool: This tool gives users new flexibility in analyzing SAVI data, including trend analysis and community comparisons beyond what can be done using maps

alone. Users can create bar charts and line graphs comparing multiple years, geographies, or indicators; and pie charts of several categories related to demographics, the economy, housing, and more.

- More Community Profiles: We published 245 neighborhood-level community profiles, which add to our over 1,600 community profiles by county, township, school corporation, census tract, and block group. The profiles provide an overview of the community's demographic composition, economy, housing, education, health, and history (when available).
5. What upcoming events/activities (with dates) present an opportunity to showcase NNIP?
- 3<sup>rd</sup> Annual SAVI Users Conference: Using Local Information for Community Change on October 2, 2007. This conference will explore the ways in which SAVI empowers communities and organizations to assess needs, plan services, target programming, change policy, and evaluate results. Kathy Pettit will present on NNIP, along with guests from 4 other cities: Charlie Bruner – Des Moines, Michael Barndt and Todd Clausen – Milwaukee, Allison Plyer – New Orleans, and John Stern – Nashville. Several local organizations and researchers also will be presented.

## ***Louisville***

### COMMUNITY RESOURCE NETWORK

October 2007

1. What are your key accomplishments since January 1, 2007 (headlines)
  - Completed local data mart pilot. Key accomplishments: data sharing agreement, dictionary for local metadata, and role definition for government and NFPs as we move forward.
  - Completed several organizational development projects with emphasis on data management, development standards, and increased production capacity.
  - Have received 63 individual data requests from community partners since January 1. 48 complete, 5 on hold, 3 cancelled, 7 in-progress.
  - Completed needs assessment and selected vendor for the development of a community program performance tracking system. Implementation: 12-07. Key community partners include workforce (WIA, TANF, FSET), AECF Making Connections, Metro United Way/Gheens, Kentucky College Access Center.
  - Completed outsourcing of network and desktop IT support.
  
2. What important reports have you produced? What important data presentations have you delivered?
  - Data Mart pilot analysis and outline for next steps including data sharing, application development support, and other planning for collaboration between local government and other community partners.
  
3. What new analysis/program efforts are you working on?
  - Participant Family Data Collection Survey (PFDC). Collecting results data from a subset of 50 families participating in Making Connections activities, services, planning, or intervention strategies. Objective: How is Making Connections Louisville (MCL) multiplying its effects on families across strategy areas.
  - CRN is working with Metro United Way and Social Compact, Inc. to become a local user of the Social Compact methodology as a way to support local data initiatives using a standard, proven, and supported data collection and analysis methodology.
  - Upgraded analysis and mapping software to ArcGIS 9.2
  - Implemented a NETWORKED Job Tracking System for Community Resource Network that systematizes and catalogs all job requests, including time frame, objectives, product deliverable, process involved, client, partner, data required, data-sharing constraints, and necessary files and documentation for each job
  - Established an Internship Program in partnership with the University of Louisville Geography and Geosciences Department



- Provided analysis and data support to over 15 community partners, including Metro Government, Kentucky State Government, Metro United Way, Making Connections Louisville, Metropolitan Housing Coalition, Habitat for Humanity, Presbyterian Community Center, Louisville Asset Building Coalition, Louisville Center for Neighborhoods, Kentuckiana Works, AtWork Solutions, United Parcel Service (UPS), and Metropolitan College.
4. Have you acquired new data (other than routine updates)? Have you completed any notable system or web site improvements? Please describe.
- Jefferson County Public Schools (JCPS) 1999 through 2006 Absenteeism in Elementary Schools
  - JCPS 2006-2007 student level data, general demographic data and absenteeism
  - JCPS 2006-2007 student level data, DIBELS
  - JCPS 2006-2007 student level data, Reading Scores
  - Jefferson County Youth Detention Center, Juvenile youth detentions by ID, age, gender, detention date, release date, and charge, 2005 to present.
  - Lou Metro Incidence of Crime 2004, 2005 (latest available)
  - Habitat for Humanity Home ownership program applicants and participants 2007 monthly
  - EITC/VITA campaign data for TY 2006
  - Licensed and Certified Child Care 2007, quarterly
  - Approved and Unregulated Child Care 2007, quarterly
5. What upcoming events/activities (with dates) present an opportunity to showcase NNIP?

September 07 - Presentation at Federal Reserve Bank – Louisville

September – December 07 – Participating in Center for Neighborhoods “Neighborhood Institute” with the purpose of “provide resources, connections, and knowledge needed to be effective agents of positive change and to initiate neighborhood improvement”.

November 07 -- CRN is working to become a partner with Louisville Metro government in its initiative with Social Compact, Inc.

**Please note:** For CRN, 2007 has been a year for reflection, self-evaluation, and renewal to enable us to better accept, support, and contribute to the NNIP vision.

## ***Memphis***

### MEMPHIS CBANA-INFOWORKS

October 2007

1. What are your key accomplishments since January 1, 2007 (headlines)

CBANA and Community Development Council of Greater Memphis publish and disseminate detailed county-wide and neighborhood-level Lending Study to drive local anti-foreclosure interventions.

CBANA and Southeast Memphis Community Development Corporation partner with City of Memphis, Hickory Ridge Mall, and other stakeholders to access and analyze comprehensive parcel-level data and launch Winchester Corridor Revitalization Initiative. (Will also involve Social Compact in the first layer of what is expected to become a county-wide market study.)

CBANA and Problem Properties Collaborative partner with City of Memphis and Shelby County to design and implement county-wide neighborhood-level survey and problem property audit and integrated, multi-agency “early warning system” database for housing and neighborhoods.

CBANA partners with Partners in Public Education and Leadership Memphis to articulate evolving “InfoWorks Memphis” neighborhood indicators system (drill down and parcel-level emphasis) with the “Memphis Dashboard” system that will “compare up” through key indicators across selected peer cities, and engage community discussion across ten domains.

CBANA partners with Governor’s Office of Children’s Care Coordination and Mayor’s Office for Health Policy to track neighborhood-level and county-wide impact of infant mortality, birth outcomes, and pre-conception health initiatives (The Butterfly Project and Community Voice.)

CBANA partners with The Urban Child Institute on NNIP-Casey cross-site school-readiness project.

2. What important reports have you produced? What important data presentations have you delivered?

2005 Lending Study for Shelby County, with presentations for CD Council, City of Memphis, local CRA officers, Memphis Area Association of Realtors, Memphis Light Gas and Water Neighborhood Leadership Conference, and other venues (ongoing.) Being posted at <http://cbana.memphis.edu> (still under construction.)

“Strengthening Neighborhood Housing Markets in Memphis,” for the Quarterly Community Forum of the Community Development Council of Greater Memphis.

“Drilling Down and Theorizing Up” for the St. Louis Branch of the Federal Reserve “Innovations” conference. (Overview of strategy to link CBANA housing/neighborhood-intensive data with Social Compact’s commercial data)

Significant contributions to “The State of Children in Memphis and Shelby County: A Reference Guide” (2007), published by The Urban Child Institute. [www.theurbanchildinstitute.org](http://www.theurbanchildinstitute.org)

“Linking Parcel-Level Property Transaction Data with Community Action” for the National Vacant Properties Campaign-PolicyLink national conference. (Panel: Data for Change: Property Information Systems and Equitable Revitalization)

3. What new analysis/program efforts are you working on?

New partnerships noted above in headlines all involve analysis and strategic problem-solving. Underway, but not quite so far along:

Working with Women’s Foundation of Greater Memphis, U of M Center for Research on Women, and Memphis Area Women’s Council on a cross-site proposal for strategic, data-driven workforce development for women – for presentation to national funders. (Note: DC Women’s Foundation part of the cross-site discussion, with Urban Institute involved with DC Foundation’s data strategy.)

Working with Memphis HOPE case management (HOPE VI), Memphis Housing Authority, Division of Housing and Community Development, Memphis Police Department and Shelby County Sheriff’s Department to track decentralization of poverty, subsidized housing, and crime patterns to power case management and community safety interventions.

Partnering with Operation Safe Community, Department of Children’s Services, the Methodist Interfaith Health Program, and others to design and implement support county-wide asset-mapping protocol and collaborative initiative.

Partnering with NNIP partner Chatanooga Community Research Council and others in the Southeast Performance Measures Practitioner Network (a Chatanooga-led initiative.)

4. Have you acquired new data (other than routine updates)? Have you completed any notable system or web site improvements? Please describe.

Linked birth and death certificate data from 1999-ongoing for Butterfly and Community Voice projects (above.)

5. What upcoming events/activities (with dates) present an opportunity to showcase NNIP? Southeastern Performance Measures Practitioners Network – January 30-31 in Chatanooga (coordinated by NNIP partner Chatanooga Community Research Council.)

## ***Miami***

### THE CHILDREN'S TRUST

October 2007

#### **1. What are your key accomplishments since January 1, 2007 (headlines)**

The Children's Trust commissioned a population-based survey on child health and well-being in Miami-Dade County. It was conducted from January through April 2007 and is representative of three age groups (birth to 5, 6 to 12, and 13 to 17), three racial/ethnic groups (Hispanic, white non-Hispanic, and black non-Hispanic), and five geographic regions. The final report is drafted and currently under review for publication.

In July 2007, The Children's Trust hired its first full-time Community Indicators and GIS Analyst! This position serves as project manager during the current development of our interactive GIS mapping website and will be responsible for overseeing the maintenance of the site's database and upgrades thereafter.

In August 2007, we began discussions with several data intermediaries to develop data collection and sharing relationships expected to result in formal agreements for regular sharing/ updating of sub-county level data.

*Child Well-Being in Miami-Dade County: 2007 Community Indicators Report* is in final re-write with publication expected this fall.

#### **2. What important reports have you produced? What important data presentations have you delivered?**

No reports or presentations conducted since the last update; however, several publications are currently in draft form, as noted above, and a presentation highlighting both the household survey results and local trends and comparisons contained in the community indicators report will be delivered next month, as noted below.

#### **3. What new analysis/program efforts are you working on?**

The Children's Trust began discussions with local organizations and agencies with similar data interests and mapping needs to jointly approach data intermediaries, share responsibilities and collection efforts, and develop efficient means to link and support each others' work. Our intent is to fulfill the NNIP challenge and build a collaborative effort to provide user-friendly information at the community-level and empower individuals to access and use the data to better understand and improve their neighborhoods and quality of life.

The Children's Trust is a recipient of a NNIP School Readiness and Success Initiative grant and has been strengthening its ties with providers and funders of early learning programs and activities. Additionally, The Trust's Quality Rating Improvement System (QRIS) – which seeks to improve child care options and outcomes throughout Miami-Dade County, build the capacity of early care and education providers, establish accountability for voluntary standards of high quality, and influence consumers to demand high quality services for their

children – has coalesced a working group of public and private organizations with the specific intent to build a comprehensive database system inclusive of data on individual children and their assessments; curriculum in use; and child care centers' licensing, facilities, and staff professional development. The resulting system will provide numerous reports and means of analysis across fields; yield "star" ratings of child care center quality, and improvement plans if necessary; and, be web-based, user-friendly and accessible to providers and parents as a means to ensure accountability and provide information on local child care quality and options.

The Children's Trust Health Connect in our Schools initiative, a partnership with Miami-Dade County Public Schools and Miami-Dade County Health Department, is expanding its data collection and sharing efforts and will be piloting the use of Florida's statewide vaccination/immunization database.

**4. Have you acquired new data (other than routine updates)? Have you completed any notable system or web site improvements? Please describe.**

- Various GIS layers from Miami-Dade County's Enterprise Technology Services Department – from basic transportation system components to parks and recreation areas to emergency evacuation locations and more.
- The results of the 2007 telephone survey of parents with children with responses to questions on child health and well-being (medical access, insurance, care, healthy habits, safety, early childhood care and behavior, out-of-school care and activities, family stress, parenting style, neighborhood safety and support, and services needed) are available at the sub-county level by either individual zip code or zip code zone (aggregated zip codes with a minimum of 30 interviews).
- Miami-Dade County Public Schools individual school level information related to student population, achievement, staff, and school climate survey results
- Miami-Dade County Health Department vital statistics, injuries and hospitalizations data
- Florida Department of Juvenile Justice juvenile crime citations by age and race/ethnicity
- Miami-Dade County Medical Examiner's homicide data by location and victim's age, sex and race
- Website remains under development by Placebase with expected introduction to the public later this fall.

**5. What upcoming events/activities (with dates) present an opportunity to showcase NNIP?**

On October 26, 2007, The Children's Trust will present results from both the 2007 survey of Miami-Dade County households with children and the update of community indicators of child well-being at the Alliance for Human Services' 5<sup>th</sup> Annual Institute in Miami Beach, Florida. In addition, a preview will be given of The Trust's interactive GIS website (currently under development) focused on community indicators specific to child health and well-being.

# **Milwaukee**

NONPROFIT CENTER OF MILWAUKEE

October 2007

## **1. What are your key accomplishments since January 1, 2007 (headlines)**

As of September 1, the Nonprofit Center has served 42 unique agencies and completed approximately 112 projects ranging from a simple demographic request to a complex facilities planning study and comprehensive neighborhood profile for a Head Start Community Assessment. Over 275 hours of service have been provided to Community Development Block Grant funded organizations through a contingency account established by the Block Grant Administration. The Nonprofit Center of Milwaukee's Data Center Program could not have accomplished this work and more without the assistance of interns who have volunteered over 862 hours to assist in the completion of these projects.

Throughout the year, we have worked on continuing refinement of tools to work with time series data – producing both graphics and maps.

The Nonprofit Center of Milwaukee completed several major projects this year:

- Wisconsin Housing and Economic Development Association HOME loan analysis

- Milwaukee Public Schools Head Start Community Assessment

- Milwaukee Public Library Facilities Planning Support

- Report on “Closing the Home Ownership Gap” for Select Milwaukee

- Work on small area population estimates and projections and challenging the accuracy of ACS

- Support for City of Milwaukee legal case against Mautz and other lead paint companies

## **2. What important reports have you produced? What important data presentations have you delivered?**

We created a series of reports for the Wisconsin Housing and Economic Development Association from their client database to allow them to take an in depth look at their lending patterns by race and income level across the state of Wisconsin. We also did a series of reports for them using HMDA data to allow them to compare their lending to the patterns to those of their peers in the banking industry. The reports indicated that borrowers who received loans through WHEDA or one of its affiliates were more likely to receive more favorable loan terms than borrowers through the banking industry.

The Data Center also completed the Community Assessment for the Milwaukee Public Schools Head Start Program required every three years. The assessment was the first in Milwaukee to take a neighborhood by neighborhood approach to looking at the environment and challenges faced by young children in Milwaukee. The report focused on neighborhoods surrounding each of the MPS Head Start locations and gave hard data such as population demographics and housing issues unique to each neighborhood as opposed to the usual small sample survey data presented by others in the past. The knowledge gained by Head Start staff from the report has already been successfully used to increase enrollment in the program for the 2007-2008 school year.

We have been working with the Milwaukee Public Library in support of development of a facilities plan. The work has been along similar lines to the Head Start report in that we have

focused on neighborhoods surrounding each of the library branches around the city and describing the challenges and opportunities within each area instead of a city-wide approach. We were also able to examine library card usage data which suggested that each branch should be looked at individually within a facilities plan, and that more traditional approaches to planning may not be the best option for some locations.

Select Milwaukee requested an estimate of potential for increases in home ownership among minorities. In preparing this report, we analyzed the gap in home ownership between White households and minority households by using an innovative approach building from a U.S. Census SF4 race-income-tenure table. The “income adjusted” pattern of home ownership continues to demonstrate a large White to minority ownership gap.

We made a presentation at the following conference in addition to our usual in-house training schedule that focuses on technology and building individual organizations capacity to use data:

Center for Disease Control – Michael Barndt reviewed the history and values of the PPGIS movement for a Community Assessment conference. This was also an opportunity to bring up the contributions of NNIP and its partners to the movement.

### **3. What new analysis/program efforts are you working on?**

We are currently looking at Mortgage Foreclosure and High Cost Mortgage loan issues, as well as housing values and sales trends in Milwaukee neighborhoods, especially in light of the recent down-turn in the market.

The Nonprofit Center will also be working with the Metro Milwaukee Fair Housing Coalition in support of an Analysis to Impediments in Fair Housing report for Milwaukee County and each of its 19 municipalities.

New analysis of WHEDA’s HOME mortgage lending for 2006, and comparison to recently available 2006 HMDA data.

### **4. Have you acquired new data (other than routine updates)? Have you completed any notable system or web site improvements? Please describe.**

This summer we purchased GeoLytics 2007 Estimates and 2012 Projections for the State of Wisconsin. We have found some serious problems in this data as well as with the Claritas estimates when attempting to use these types of data at a neighborhood level, even though they are available by Census Tract.

### **5. What upcoming events/activities (with dates) present an opportunity to showcase NNIP?**

We continually stress our NNIP affiliation in our presentations both locally in workshops and in our interactions with government, and nationally when presenting at conferences. We currently have no events with broad exposure on our calendar; however it is likely that several opportunities will present themselves throughout the coming year.

### **6. What information would you like to share or topics would like to discuss at the NNIP meeting in Indianapolis in October 2007?**

It would be great to take a look at the metadata systems presented over the summer, and especially to take a serious look at the system developed for Denver.

As always, we continue to be interested in opportunities to explore tool development and to share more technical information across sites. The web presentations have so far been a perfect opportunity to showcase work across the sites in this area and are an area where we should be expanding.



# ***Minneapolis***

CENTER FOR URBAN AND REGIONAL AFFAIRS, UNIVERSITY OF MINNESOTA  
October 2007

## **1. Key accomplishments since Jan 2007 (headlines)**

- New custom demographic and employment reports have been added to the Minnesota 3D web application ([map.deed.state.mn.us/M3D](http://map.deed.state.mn.us/M3D)). These reports allow the user to select any level of geography (city, neighborhood, block group) or groups of geographic features and generate dynamic reports on the demographics and jobs in the area of interest.
- Spring semester of 2007 CURA staff co-taught Geography 5564: Urban GIS and Analysis which uses community-based projects for 40% of student's grades. Nine community GIS projects were completed which will be detailed in item 2.
- We have secured recurring University funding for the Community GIS program within CURA. CGIS had been on soft money for the previous six years so this marks an important step in continuing our community GIS efforts.
- Two graduate research assistants have been hired for the 2007-8 academic year to provide technical, mapping, and GIS assistance for CURA sponsored research project and community-based GIS initiatives.
- We have completed a comprehensive sheriff's sale foreclosure data collection effort for the seven county metro area. Students entered paper records and/or cleaned up electronic versions of the data during the summer of 2007. We are in the process of geocoding more than 6,000 records for 2005 and 2006 and preparing to add the data to M3D as well as provide to community organizations and researchers.

## **2. What important reports have you produced? What important data presentations have you delivered?**

- Moving Forward Together: U of M Minneapolis Area Neighborhood Impact Report - [http://www.cura.umn.edu/publications/NIR\\_REPORT.pdf](http://www.cura.umn.edu/publications/NIR_REPORT.pdf)
- Subprime Lending and Foreclosure in Hennepin and Ramsey Counties. <http://www.cura.umn.edu/reporter/07-Summ/Crump.pdf>
- From Urban GIS and Analysis nine reports/projects were produced. Project titles are below and can be found in the CURA project database.
  - Transit for Livable Communities: GIS Evaluation for Bike Routes
  - Hawthorne Area Community Council: Foreclosure Smackdown!
  - City of Lakes Community Land Trust: Mapping and Analysis of CLCT Homes
  - Central Weed and Seed: Housing Investment Impact Analysis
  - La Escuelita: Educational and Community Resources for Latino Youth
  - Field Regina Northrop Neighborhood Group: Neighborhood Atlas
  - Bottineau Neighborhood Association: Comprehensive Rezoning Study
  - Kingfield Neighborhood Association: RiverLake Greenway
  - Leonardo's Basement: Capacity Building Project

- We have presented on the M3D Internet-based GIS application to a wide variety of local government and community agencies this year including:
  - Hennepin County Office of Planning and Economic Development
  - City of Minneapolis Workforce Development Group
  - Northside Alliance
  - Metropolitan Council Research and Transit Groups
  - MetroGIS Policy Board
  - Metro Workforce Investment Board
  - Foreclosure Prevention Funders Council Measurement's Subgroup
- Presentation on M3D and Community GIS efforts in the Twin Cities at the Community Indicators Consortium conference, March 2007 in Jacksonville, FL.

### **3. What new analysis/program efforts are you working on?**

- We are working with HousingLink (a local non-profit), the City of Minneapolis, and the Foreclosure Prevention Funders Council to explore the creation of a foreclosure prevention predictive model which will operate similar to the Early Warning System and give parcel-level detail on properties at risk of foreclosure.
- CURA is providing GIS and database support for a metrowide research study on the Economic Impacts of Transit led by Professor Ed Goetz of the Humphrey Institute of Public Affairs. This project will rely on parcel level land use, value, and sales data to assess impacts of our single light-rail line on surround property values and land use change.
- We are working with the Minneapolis Consortium of Community Developers on an affordable housing suitability analysis of Minneapolis. This study will focus on individual properties and vacant parcels suitable for affordable housing projects in non-impacted neighborhoods throughout the City.

### **4. Have you acquired new data (other than routine updates)? Have you completed any notable system or website improvements?**

- Foreclosure records for 2005 and 2006 for each of the seven counties within our metropolitan area have been collected and entered into an electronic database. Currently only one county provides their data electronically.
- We have obtained the locations of family (home-based) childcare centers to complement the state licensed childcare centers already found in our M3D application. This data comes from the Minnesota Childcare Resource and Referral Network.
- As mentioned in item 1, new demographic and employment reports have been added to M3D. The demographic reports currently contain information on race/ethnicity, age/gender and educational achievement.
- City utility delinquencies (late water bills) have been obtained for Minneapolis through the Ward 9 Councilmember's office. Utility arrears have long been considered an indicator of potential problem properties and housing abandonment and will greatly improve the usefulness of the City's Early Warning System application.

## ***Nashville***

NEIGHBORHOOD RESOURCE CENTER

October 2007

1. What are your key accomplishments since January 1, 2007 (headlines)

### **January 07 – NRC Released “The Future of Neighborhoods: A Vision for the Future of Nashville and Davidson County.”**

Using input from more than 130 Davidson County neighborhood groups, NRC outlined a comprehensive vision for ensuring the health, safety, prosperity, and livability of communities across the Nashville area. The final report organized community goals around 14 common issue areas and identified concrete actions for neighborhood groups to take toward achieving their vision for the future. The process of gathering ideas from the community spanned a period of seven months, and involved two large-scale community forums and dozens of smaller planning meetings. Currently, NRC is facilitating the implementation of the report's recommendations through its work with local neighborhood organizations.

### **July 07 – NRC Launched [www.NashvilleCrime.Org](http://www.NashvilleCrime.Org).**

The Nashville Police Department has a website that displays a limited amount of crime data, but it is somewhat difficult to use. However, many of the neighborhood groups and non-profit agencies that we work with are very interested in seeing crime incident data for the communities they serve. [www.NashvilleCrime.Org](http://www.NashvilleCrime.Org) allows Nashvillians to submit a Davidson County address to view crime incident data, as well as the locations of, bars, liquor stores, pawn shops, check cashing centers, tax preparation centers, grocery stores, pharmacies, etc. near the address of interest.

### **July 07 – NRC Purchased a Building to Serve as Our Permanent Home.**

In July 2007, Neighborhoods Resource Center purchased and took possession of the building and grounds of Engine Company #1, located at 1312 3rd Avenue North. The structure was built in 1935 on what was the site of the very first Nashville Fire hall -- a building that was constructed in 1868. This was done, as described in a July 22, 1934 article of *The Tennessean*, so that the station would “better fit” into the residential district where it was located. NRC is now in the beginning phase of a fundraising effort, with a goal to eventually restore the building to its original character.

2. What important reports have you produced? What important data presentations have you delivered?

### **Data Presentations**

February 07 – Presentation for the Kid’s Count National Conference, held in Nashville, TN. “Neighborhood-Based Indicators for Metropolitan Nashville, TN.”

### **Workshops**

During the first nine months of 2007, NRC conducted four Leadership Training & Capacity Building Workshops, involving 150+ participants. We covered these topics:

- **Leadership Training 101: Basic Training** (Stakeholders; How to Organize; Individual Meetings; Developing Leadership; Conducting Effective Meetings; Information Services at NRC; Developing a Strategy for Action).
- **You and Your Homeowners’ Association: Working Together for a Bright Future**
- **Legal Rights and Responsibilities of Neighborhood Leaders**
- **Zoning: A Neighborhood Leader’s Guide for Action**

3. What new analysis/program efforts are you working on?

**How to Create Neighborhood-Based Websites** – For an upcoming leadership training event, we plan to teach neighborhood leaders how to create websites for the organizations they’re a part of. The training would include instruction and discussion for the following topics: elements of good web design, components that should be included on neighborhood websites, free resources for online web publishing, etc.

**Gentrification Study** – Neighborhoods Resource Center and the Vanderbilt Legal Clinic are working with residents of the Edgehill Neighborhood (near downtown Nashville) to study issues related to gentrification and identify residents who will take a leadership role in developing solutions to minimize its impact. As a part of the study, NRC will create several neighborhood-level maps, depicting data such as: yearly property value changes (neighborhood average vs. metro average), monthly housing costs as a percentage of household income, and household displacement rate (foreclosures).

4. Have you acquired new data (other than routine updates)? Have you completed any notable system or web site improvements? Please describe.

### **New Data Acquisitions** (All at the street address level of detail)

**ReferenceUSA** (through a partnership with the Nashville Public Library):

Liquor Stores, Bars, Check Cashing Centers, Tax Preparation Centers, Bail Bond Brokers, Pawn Brokers, Supermarkets, Restaurants, Pharmacies, Non-Profit Organizations, Medical Centers, Hospitals.

**Metropolitan Transit Authority:**

Bus routes and stops.

**United States Postal Service:**

Post Office locations.

**IRS / Nashville Wealth Building Alliance:**

NWBA program participants and additional variables, including: race, age, earned income tax credit, other tax credits and refunds, etc.

**Website Updates**

**March 07 – Updated [www.Tnrc.Net](http://www.Tnrc.Net).** Site now allows users to view 2000 Census Information Demographic Profiles for each tract in Davidson County.

**June 07 – Updated [www.GettingToWork.Net](http://www.GettingToWork.Net),** a website designed to help Nashville residents find job opportunities, transportation, social service providers, etc. near their homes and workplaces. Interactive map allows users to input a Davidson County address to find job training centers, licensed child care facilities, public schools, colleges and universities, affordable housing opportunities, grocery stores, bus routes, etc. near the submitted address.

**July 07 – Launched [www.NashvilleCrime.Org](http://www.NashvilleCrime.Org),** a website that allows Nashvillians to view street-level crime data for their neighborhood. Interactive map allows users to submit a Davidson County address to view crime incidents, bars, liquor stores, pawn shops, check cashing centers, tax preparation centers, grocery stores, pharmacies, etc. near the submitted address.

**August 07 – Updated [www.NashvilleNeighborhoodAlliance.Org](http://www.NashvilleNeighborhoodAlliance.Org).** In late 2007, every seat in the Metropolitan Council turned over, and a new mayor was elected. Before the August election took place, the Nashville Neighborhood Alliance (NNA) provided each council candidate a questionnaire focused around neighborhood-based issues. Responses to the questionnaires were summarized, tabulated, and added to the NNA website. The website was created so that Nashville residents could be educated about the stances and opinions of local elected officials regarding neighborhood-based topics.

5. What upcoming events/activities (with dates) present an opportunity to showcase NNIP?

We often highlight our membership with NNIP at meetings and leadership training events when we discuss Information Services with local non-profit organizations and neighborhood groups. Furthermore, we've highlighted our NNIP affiliation in grant applications, and in the reports we send to our funders.

In the future, we will continue to publicize our affiliation with NNIP, as it's a distinction we're extremely proud of.

## ***New Orleans***

### GREATER NEW ORLEANS COMMUNITY DATA CENTER

October 2007

1. What are your key accomplishments since January 1, 2007 (headlines)  
Co-publishing the Katrina Index (now “The New Orleans Index”) with the Brookings Institution.  
Major web site redesign.  
Co-publishing resource maps with multiple partners.  
Beginning to develop a multi-purpose Community Resource Database with VIA LINK the local 2-1-1 provider.  
Publishing longitudinal USPS data on active residential deliveries providing maps, downloadable spreadsheets by zip code, and analyses in press releases and included in The New Orleans Index.
2. What important reports have you produced? What important data presentations have you delivered?

The Katrina Index was a monthly report that the Brookings Institution produced from December 05 to December 06. We began co-publishing it with them in January 07. In August 07 we published a major two year anniversary report on dozens of recovery indicators and renamed the report “The New Orleans Index.” It will now be published quarterly.

Current asset maps in publication for Orleans Parish include child care (in partnership with Agenda for Children), public schools (using data from the State Dept of Education), afterschool programs (in partnership with the Afterschool Partnership and VIA LINK), hospitals, and community clinics (for Region 1 and Orleans Parish, respectively, in partnership with LPHI and VIA LINK). The afterschool programs and clinics have a map and companion directory with detail about each program.

We worked with VIA LINK staff to collectively evaluate software for a multi-purpose Community Resource Database.

In May we published a Research Note entitled, “Using U.S. Postal Service Delivery Statistics To Track the Repopulation of New Orleans & the Metropolitan Area.” Publishing this report represented the culmination of months of research into this data set, which is used by commercial demographers to inform population changes, but has not been used to date in a post-disaster situation to analyze patterns of repopulation.

National presentations included:

- Presentation at Health Survey Research Methods conference for Emergency Preparedness and Surveillance session (Atlanta)

- Presentation at American Statistical Association meeting of federal statistical agencies: Workshop on Modifying Surveys in Response to Disruptions (Washington, DC)
- National AIRS conference,
- Presentation on geospatial data libraries at the International City Management Association's Restoration 2007 conference (with LSU's Katrina Clearinghouse)
- Closing Plenary presentation at URISA's GIS in Public Health
- Workshop presentation on using 2-1-1 databases for multiple purposes entitled "It's not as simple as it seems – adapting a Community Resource Database to inform gap analyses, advocacy, and strategic decision-making" at the Alliance of Information & Referral Systems (Jacksonville, FL.)

3. What new analysis/program efforts are you working on?

We continue to work on the development of the multi-purpose Community Resource Database in collaboration with VIA LINK.

We are working on a more thorough literature review around methodologies for developing population estimates and tracking population migration.

We have established a "community of practice" via a Googlegroups to share knowledge with interested NNIP partners and other interested nonprofits and government agencies about postal data and their use in assessing population change in small areas with limited lag time.

4. Have you acquired new data (other than routine updates)? Have you completed any notable system or web site improvements? Please describe.

In January, we focused on designing and launching the new web site design for [www.gnocdc.org](http://www.gnocdc.org), which includes a prominent space on the home page for The Katrina Index, which we began co-publishing with The Brookings Institution in January. The new design brings a new level of professionalism and credibility to the Data Center web site at a critical time when we need to maintain our position as the neutral, trusted local data intermediary.

In May we began publishing USPS active residential deliveries data.

Via the New Orleans Index (Katrina Index) we sourced a large number of new data sets including Road Home data, public school enrollment, private school enrollment, sales tax collections, net change in employers, job vacancies, and status of New Orleans Police Department Infrastructure.

5. What upcoming events/activities (with dates) present an opportunity to showcase NNIP?

The new USPS Stats Discussion Googlegroups will be an excellent opportunity to create a community of practice with NNIP partners interested in working with USPS data to assess small area population change. We are hoping to present a paper on USPS data at the Population Association of America conference in April 2008, and this may be an opportunity to showcase the knowledge sharing among NNIP partners on this topic.



## ***New York***

NEW YORK CITY HOUSING AND NEIGHBORHOOD INFORMATION SYSTEM,  
NEW YORK UNIVERSITY  
October 2007

1. What are your key accomplishments since January 1, 2007 (headlines)
  - In April, we released our annual State of New York City's Housing and Neighborhoods report featuring a unique analysis of homeownership trends in New York City.
  - In August, we released a policy brief on the impacts that Business Improvement Districts have on the value of properties within their district, and what this means for City policy.
  - Over the past year, we have significantly increased the size of our staff, broadened the scope of our research and developed a new policy brief series to articulate how our work can be useful for those working to improve housing and neighborhoods.
  
2. What important reports have you produced? What important data presentations have you delivered?
  - On February 9, 2007, the Furman Center, along with the Association for Neighborhood and Housing Development and the Community Development Project/Urban Justice Center created a housing resource training for community members and staff of organizations carrying out housing-related organizing in NYC low-income communities and and/or organizations conducting housing research in support of community and organizing efforts.
  - On March 7, 2007, the Furman Center held a hands-on training geared specifically towards staff members of elected officials that looked at various housing-related government data sources, taught skills to access relevant data useful in informing and supporting efforts to promote and preserve affordable housing throughout New York City. The training focused primarily on the New York City Housing and Information System (NYCHANIS).
  - On May 17, 2007, we presented the State of the City data and report to Habitat for Humanity. Our presentation focused on housing and neighborhood conditions in NYC.
  - On May 30, 2007, Furman Center staff met with two community groups: Committee Against Anti-Asian Violence (CAA AV) and Families United for Racial and Economic Equality (FUREE) to help them gather and understand data for their organizing initiatives.
  - Also this year, the Furman Center met with Picture the Homeless, an advocacy and organizing non profit, who used the Furman Center's data for their report "Homeless People Count: Vacant Properties in Manhattan."
  - On July 25, 2007, the Furman Center released a report measuring the impact that NYC's Business Improvement Districts have on the value of properties within their district. The Benefits of Business Improvement Districts: Evidence from New York City is the first empirical analysis on the effects that BIDs have on property values, and can be used to better understand the role these organizations play in local economic development.

- On April 11, 2007, the Furman Center released the 2006 State of New York City's Housing and Neighborhoods.
- On April 11, 2007, the Furman Center presented on Mortgage Foreclosures in New York City at the New York State Banking Department's Conference on Campaign to Halt Abusive Lending Transactions & Mortgage Fraud. The Furman Center also met with the Federal Reserve Bank of NY several times to discuss this research.

3. What new analysis/program efforts are you working on?

- The Furman Center continues to evaluate whether and how publicly-financed housing investments drive change at the neighborhood level. This fall, two of our studies advance this work. The first explores the effects different kinds of supportive housing have on the value of surrounding properties, as well as on such determinants of neighborhood quality as crime and building activity. This analysis will be an important contribution to the controversy that surrounds the approval of supportive housing facilities. The second, a joint project with NYU's Institute for Education and Social Policy, examines the impact that the City's housing investments have had on local schools. Have they crowded existing schools or spurred the opening of new schools? Have they changed the characteristics of the students enrolled in the neighborhood schools? Have they affected test scores or other measures of school quality? Led to changes in the resources available to the neighborhood schools? In short, while everyone "knows" that better schools lead to better neighborhoods, we're asking whether better housing leads to better schools.
- For the past year, the Furman Center has been a part of the national conversation surrounding subprime lending and the risk and impact of mortgage foreclosures. To help advance this crucial dialogue with empirical evidence, the Furman Center is studying what costs foreclosures impose on the surrounding neighborhoods. We also are examining how neighborhood characteristics and housing market conditions affect what happens to borrowers who fall behind on mortgage payments, and whether borrowers who rely on subprime loans tend to fare better or worse than prime borrowers in resolving loan distress.
- At the request of the Center for Housing Policy at the National Housing Conference, we also are completing a study that examines the effects of inclusionary zoning programs on housing prices, rents, and the production of both market-rate and affordable housing in three metropolitan areas: San Francisco, Boston and Washington DC. As inclusionary zoning programs proliferate in New York City and around the nation, the study will provide crucial data on how such programs actually have worked.
- The Furman Center also is completing a study examining the effects community gardens have on the value of surrounding properties. We hope this research will help local governments make more informed decisions about whether and how to invest in community gardens and other green spaces.
- Finally, we are researching how the City promotes (or fails to adequately promote) synergies between economic development and affordable housing, and what could be done to further ensure that these goals are pursued in tandem.

4. Have you acquired new data (other than routine updates)? Have you completed any notable system or web site improvements? Please describe.
  - In the past year, we have doubled the number of development projects profiled on PlanNYC and increased the number of unique visitors by more than 50%. In March, PlanNYC was selected by Planetizen, a public interest website for the urban planning community, as one of the top 10 online resources for those interested in planning, design, and development. We are in the midst of a major overhaul to PlanNYC. The redesign will increase the sites' usability, improve its look and feel, and expand the amount of data available to the public.
  - In regards to NYCHANIS, the Furman Center has been working with Dataplace on an overhaul of the system. The technological makeover will make NYCHANIS far more user-friendly and intuitive, so that users will no longer have to be trained to fully understand the site's capabilities and feel comfortable using them. The current site requires a log-in page and several additional introductory pages; the new redesign will allow users to get the data they are seeking immediately. The new site will also allow users to search for neighborhood and housing indicators by name and neighborhood (rather than using the cumbersome drop-down list the site's technology now requires). The technology will allow rankings to be automatically provided for each indicator. The mapping function on NYCHANIS currently allows users without expensive GIS equipment to make useful thematic maps, but it is difficult to navigate. The improved mapping function will allow users much more flexibility.
  
5. What upcoming events/activities (with dates) present an opportunity to showcase NNIP?
  - When we re-launch NYCHANIS, in its improved state, we would have the opportunity to showcase NNIP. We currently discuss NNIP and its related partners at our NYCHANIS training sessions. We had our last training session on August 31st and will likely have another one in the next few months.

## ***Oakland***

### URBAN STRATEGIES COUNCIL

October 2007

1. What are your key accomplishments since January 1, 2007 (headlines)
  - Presentation of findings from the Richmond Violent Crime Analysis to the Richmond City Council. [link](#)
  - GIS for Public Health workshops across California for health professionals and advocates.
  - Data analysis and new user-friendly reports for the Alameda County VITA Campaign [link](#)
  - Presentation to the Congressional Tri-Caucus on improving health care for formerly incarcerated persons [link](#)
  - Development and administration of a Health Gap Survey for formerly incarcerated individuals.
  
2. What important reports have you produced? What important data presentations have you delivered?
  - 2006 Oakland Homicide Analysis
  - 2006 Richmond Violent Crime Analysis
  - Fact sheet for residents and outreach workers on homicide in Alameda County for the Violence Prevention Initiative [link](#)
  - Fact sheet on housing affordability to inform residents on local housing development accessibility and the relationship between prices and wages. [link](#)
  - Fact sheets on foreclosure [link](#)
  - Exposed escalating costs of youth incarceration [link](#)
  
3. What new analysis/program efforts are you working on?
  - Mobility amongst Oakland school students.
  - Tracking a cohort of students between multiple school closures to identify groups of students overly impacted by district wide closures in past years.
  - Developed an online database for financial counsellors to track clients involved in Making Connections Savings Pathways project.
  - Developing an online database/referral system for all providers of services to formerly incarcerated individuals in the Bay Area.
  - Analysis of over-saturation of liquor outlets and crime in Oakland.
  
4. Have you acquired new data (other than routine updates)? Have you completed any notable system or web site improvements? Please describe.

- Developed website for the San Antonio Neighborhood Network

([www.SANNOakland.org](http://www.SANNOakland.org))

This website was established to support the work of the newly formed SANN- a community building and support network staffed by residents. It is an outreach tool and a way of informing the community of the events and happenings of the network.

- Developed website for the new Alameda County Community Asset Network

([www.alamedacountycan.org](http://www.alamedacountycan.org))

This site will act as a services referral system for all members of the new coalition of organizations involved in income and asset development across Alameda County. Counsellors and the public will have the ability to search for agencies who provide relevant financial counselling, debt repair, savings assistance and relevant transactional services in their area. The group plans for the site to be informative about the various issues around financial stability and will be aimed at being appropriate for low-income families with lower education levels. (eta Aug 31<sup>st</sup>)

5. What upcoming events/activities (with dates) present an opportunity to showcase NNIP?

- Release of Cross Site Survey data and opportunities to tie into national work done by NNIP partners and UI.
- Future GIS promotion conferences aimed at promoting GIS in non-profits.

## ***Philadelphia***

TEMPLE UNIVERSITY, DEPARTMENT OF GEOGRAPHY AND URBAN STUDIES

October 2007

1. What are your key accomplishments since January 1, 2007 (headlines)

MPIP has expanded its focus to include more in-depth focus reports during the year, to include strategic relationships with civic partners that looks to build their capacity to use data to pursue community change, and to develop a more streamlined set of annual community indicators for the region.

MPIP's analyses of regional change were featured in the Philadelphia Inquirer on three successive weeks, dealing with regional economic and demographic shifts.

2. What important reports have you produced? What important data presentations have you delivered?

MPIP has released 6 focus reports; topics include job access, children at risk, evaluating schools, rental housing, sprawl, and recurring flooding in the region. These 6-12 page reports are distributed through the project web-site, with pdf versions available for download ([www.temple.edu/mpip](http://www.temple.edu/mpip)).

We have made presentations to suburban legislators on children at risk in suburban communities (<http://www.pccy.org/Indicators.htm>), we are providing data to the united Way for their community report card, to Select Greater Philadelphia for business climate indicators, to DVRPC and their consultant (the Reed Group) to assist in older suburb revitalization planning, and to a joint effort by the Greater Philadelphia Economy League and the Philadelphia Education Fund to facilitate a Greater Philadelphia Business Education Forum.

MPIP co-convened a presentation by Peter Haas of the Center for Neighborhood Technology on a region-wide index of community transportation and housing costs as the basis for a regional transportation agenda for communities and county planning agencies.

3. What new analysis/program efforts are you working on?

Creating a survey based research methodology for Campus Philly and the Knowledge Industry Partnership on the "brain drain" of college graduates leaving the greater Philadelphia region;

Collecting demographic, health, crime, housing, and education data for the Eastern North Philadelphia Youth Services Coalition (ENPYS), and the Center for Youth Development

(CYD) at United Way of Southeastern Pennsylvania to be used for a report to Hispanics in Philanthropy and as part of a larger report on the Latino community.

Working with a Chester, PA youth advocacy network to develop surveys of community needs and issues;

Working with the Center for Youth Development at United Way to develop a workshop for neighborhood-based youth development collaboratives using data for programming, planning, and organizational development objectives;

Working with the 10,000 Friends of Pennsylvania and the Southeastern Pennsylvania Metropolitan Development Network on the community assets represented by the public transit system (especially regional rails); it is expected that this effort will lead to comparable work with New Jersey Futures for the southern New Jersey communities for the region.

4. Have you acquired new data (other than routine updates)? Have you completed any notable system or web site improvements? Please describe.

MPIP has developed a more reliable method of obtaining and geo-coding ES-202 data that measures changing employment patterns across the region's communities;

We will be incorporating the results of surveys obtained through the above initiatives as they are made publicly available;

We are radically re-structuring our web-site to include mapping on-demand, a data query system, and enhanced data display and simple analysis options (roll-out expected in spring, 2008)

5. What upcoming events/activities (with dates) present an opportunity to showcase NNIP?

We expect to co-host a winter meeting with 10,000 Friends of Pennsylvania on the state of the region's transportation system, and the importance of mass transit for building and sustaining community assets (winter 2007-2008).

We will be releasing our next annual report (2007) in October.

## ***Providence***

### THE PROVIDENCE PLAN

October 2007

1. What are your key accomplishments since January 1, 2007 (headlines)

- Further development of Statewide Internet Map Server for Economic Development including acquisition of assessor data for all RI municipalities and GIS parcel data for three (now includes 25 of 39)
- Developed curriculum for teaching GIS to Feinstein High School students as part of a University of Rhode Island research project: <http://local.provplan.org/feinstein/>
- Completed another round of Tax Rate Modeling for the City of Providence
- Early Childhood Educator Professional Development (ECEPD) Fidelity Cohort
  - R2LP's first semester in the Early Childhood Educator Professional Development grant came to a close in May 2007. Since February, 15 Head Start teachers and assistants have been involved in this intensive professional development initiative. The data collected by external evaluators as well as the formative data collected by R2LP will help to inform the implementation of the grant moving forward. R2LP will use participant feedback to guide changes to curriculum and mentoring plans.
- Early Reading First (ERF) I and II data collection and analysis
  - R2LP completed baseline and initial post-data collection for the second Early Reading First grant (2006-2009). R2LP has also completed a longitudinal analysis at the conclusion of the first ERF grant to look at student, teacher, and classroom change over the period of the grant (2004-2007). R2LP intends to link ERF data with performance data from the Providence Public School Department to see impact on child outcomes moving into elementary school.
- Qualitative survey of proposed cuts to state Child Care Assistance Program (CCAP)
  - R2LP solicited responses from 190 parents, family-care providers, and center directors about cuts in eligibility for child care assistance from 225% of poverty to 150% of poverty. Since the report's release in June 2007, cuts in eligibility to 180% of poverty were approved by the RI General Assembly. These cuts eliminate child care subsidies for more than 2,400 children statewide.

[http://www.r2lp.org/matriarch/MultiPiecePage.asp\\_Q\\_PageID\\_E\\_19\\_A\\_PageName\\_E\\_Resources](http://www.r2lp.org/matriarch/MultiPiecePage.asp_Q_PageID_E_19_A_PageName_E_Resources)

2. What important reports have you produced? What important data presentations have you delivered?

- Presented program and Information Group data and applications in a joint meeting with Mayor Cicilline and Governor Carcieri.



- Presented maps and analysis of food market survey data to community coalitions who collected the data and the Initiative for a Healthy Weight at RI Dept of Health
- In partnership with RI Kids Count, provided a session to new pediatric residents in data and mapping, illustrating issues such as poverty, linguistic isolation and education levels in the neighborhoods surrounding the area hospitals.
- Presented parcel-based statewide land use breakdowns to RI Economic Development Corporation Director and key staff (significant because data had never before been aggregated)
- Presented past and present Prisoner Reentry data to Mayor Cicilline's Reentry Task force
- Perceived Impact of Proposed Cuts to RI Department of Human Services Starting Right Child Care Assistance Program
  - See above.
- *How Ready Is Providence?* course
- As part of R2LP's ongoing AmeriCorps training, members receive an intensive 45-hour college-credit bearing course on the school readiness indicators presented in the *How Ready Is Providence?* Report (*see link above*). Members learn from community stakeholders about key issues affecting children and families in the city. They also conduct their own research and create presentations around an indicator of their own choosing.

3. What new analysis/program efforts are you working on?

- Children of Incarcerated Parents (Urban Institute & Casey Foundation)
- Linkage of Health and Education data for Teen Birth Study
- Engaged by the RI Area Health Education Center (AHEC) office to map primary care physicians
- Signed data sharing agreement with RI Department of Children, Youth, and Families (DCYF) to obtain Training School (juvenile detention) and Foster Care datasets
- Working with Campus Compact to visualize and map K-16 Partnerships
- Analyzed the "CEY Survey", a survey of perceptions of young people in Providence for Communities Empowering Youth
- Analysis of GED test-takers and recipients- examining location, achievement, demographics, and wage changes over time
- Engaged in regular crime scene mapping for RI Attorney General's office (Grand Jury cases)
- Asset/liability mapping, analysis, and Map server development related to Collaborative project of LISC, Greater Elmwood Neighborhood Services, Providence Police, and Department of Corrections
- Second wave of NORC Survey data
- Launched Building Futures, an intensive case management program designed to bring unemployed and underemployed individuals into union construction jobs. Developed client-tracking database
- School department data

- R2LP/TPP have recently received PALS K-3 assessment data from the Providence Public School Department. These data will be linked to other datasets in our warehouse. For example, assessment data will be linked with ERF data to follow children as they enter public schools.
  - Child Care Assistance Program (CCAP) data
    - With funding from Annie E. Casey Foundation for the NNIP School Readiness and Success Initiative, R2LP/TPP will conduct further analyses of the long-term impacts of child care subsidy cuts in Rhode Island.
  - Early Childhood Educator Professional Development (ECEPD) grant
    - Beginning in September 2007, R2LP will begin working with 120 family child care providers and 84 center-based classroom teachers as part of a rigorous two-year professional development initiative. R2LP and an external evaluator will collect qualitative and quantitative data for both formative and summative purposes.
  - Qualitative/formative analysis
    - R2LP is currently working to build our internal data analysis capacity, especially in the area of qualitative analysis.
4. Have you acquired new data (other than routine updates)? Have you completed any notable system or web site improvements? Please describe.
- Acquired statewide probation and parole data as of April 2007 and developed caseload maps and stats for probation officers
  - Communities Empowering Youth Survey Data
  - Detailed Food Market Data
  - Tax assessor data update (had only a partial update in 2005)
  - Redeveloped, more spatially accurate parcel data
  - GIS “planimetric” data of building footprints, paved areas, 2’ contours, etc.
  - Developed GoogleEarth KML layers for Providence parcels, buildings, neighborhoods, and wards
  - GED test-taker and wage data
  - DCYF Data on RI Training School
  - Creation of ECEPD database
    - In support of ECEPD data collection, R2LP and TPP have built a database to house all of the formative data collected by R2LP.
  - Providence Public School Department assessment data
    - R2LP and TPP have established a data sharing agreement with the Providence Public School Department to obtain assessment data.
5. What upcoming events/activities (with dates) present an opportunity to showcase NNIP?
- Northeast Arc Users Conference (NEARC) November 4-7 2007
    - ECEPD mentor and AmeriCorps trainings
  - Ongoing trainings at R2LP create unique opportunities to share relevant data and findings.

## Seattle

### PUBLIC HEALTH, SEATTLE & KING COUNTY

October 2007

1. What are your key accomplishments since January 1, 2007 (headlines)

PHSKC led a coalition of community and healthy nutrition advocates, scientists and physicians in a successful effort to pass regulations banning the use of trans fat in restaurants and mandating the posting of nutritional information on menus and menu boards in chain and fast food restaurants. These regulations are slated to go into effect in August, 2008, and we expect them to (1) eliminate an extremely harmful substance from King County restaurants and (2) provide key information to families and vulnerable populations (such as diabetics) on the nutritional content of restaurant meals.

We successfully completed work on the initial release of KingStat, a cross-department performance measurement website meant to inform King County residents of the effectiveness and productivity of county agencies. Because we serve all residents of King County, PHSKC approached performance measurement from a population, not just a program standpoint—i.e., in some areas, we will measure our performance with improvements in the entire population. For instance, one performance measure was the percent of the entire population who has gotten an HIV/AIDS screening test (in line with the recent national recommendation that all get at least one test).

Our *Communities Count* report was cited in the July 2007, Preventing Chronic Disease: Public Health Research, Practice, and Policy (Volume 4: No. 3), published by the Centers For Disease Control Prevention as an example of a local project that is measuring and tracking indicators of social determinants of health as a way of advancing community health and wellness.

2. What important reports have you produced? What important data presentations have you delivered?

In April, 2007, we released a Data Watch on Diabetes in King County. In summary: The number of people in King County with diabetes doubled in the past decade. Such a rapid increase in the occurrence of a chronic illness is very rare. Diabetes now affects 84,000 adults in King County or 5.8% of the adult population. Racial and socioeconomic disparities in diabetes are substantial.

We are currently near release of our updated Community Health Data website (formerly Core Indicators), a systematic analysis of a wide range of population-based data, which includes maps, charts and tables. The new design is much easier to navigate.

We are near release of an update to Health of King County maternal and child health chapters. Health of King County was published in January, 2006.

3. What new analysis/program efforts are you working on?

We have begun an evaluation of the restaurant menu labeling regulation mentioned above. We will begin collecting baseline survey data in October and expect the evaluation to be completed in 2009. The evaluation will look at menu content, awareness, support and behavior change.

We completed an evaluation of the City of Seattle Early Learning Network that is funded by the City's Family and Education Levy and will serve as the evaluator of a recently funded Seattle Early Reading First project.

We have developed new methods for looking at disparities, including semi-automated programs that read in mortality and calculate age-adjusted "excess" deaths by race, socioeconomic status and neighborhood (Health Planning Area). We have also implemented a measure of Years of Healthy Life, which goes beyond simple life expectancy to look at the number of years residents can expect to live a life in good health.

We are planning an analysis of health data that looks at the new race categories that are reported on vital events certificates. For instance, instead of one Asian/pacific Islander group, we can now look at Asians and Pacific Islanders separately. Preliminary work indicates these two groups have very different risks of adverse health events.

4. Have you acquired new data (other than routine updates)? Have you completed any notable system or web site improvements? Please describe.

We are processing a new, improved set of small area population estimates, incorporating newly available high quality, official, tract-level post censal estimates developed by the state planning agency, the Office of Financial Management. (Previously, OFM had only gone to the county level.) As usual, we will use computer algorithms to develop age by race by sex by block by year estimates controlled to these totals. The blocks can then be aggregated into meaningful geographical units (block groups, tracts, ZIP codes, school districts, cities and counties). These will be available in VistaPHw, our web-based data query system.

5. What upcoming events/activities (with dates) present an opportunity to showcase NNIP?

## ***Washington D.C.***

NEIGHBORHOODINFO DC (THE URBAN INSTITUTE AND THE DC LOCAL INITIATIVES SUPPORT CORPORATION)

October 2007

1. What are your key accomplishments since January 1, 2007 (headlines)

Advanced analysis and outreach on issues relating to subprime lending.

Made significant contacts with key agency heads in the new Fenty administration, particularly on the topics of monitoring neighborhood change and the supply of affordable housing.

2. What important reports have you produced? What important data presentations have you delivered?

### Reports

- D.C. Housing Monitor, Winter 2007
- D.C. Housing Monitor, Spring 2007
- Subprime and High Interest Rate Mortgage Lending in the Washington, D.C., Region, Fact Sheet, March 2007

### Presentations

2/27/07 – Presentation: DC Housing Monitor Forum

3/14/07 – Testimony: Peter Tatian testified before the D.C. Council, Committee on Public Services and Consumer Affairs, on subprime mortgage lending in Washington, D.C.

3/23/07 – Presentation: Peter Tatian presented at the annual meeting of Kids Count grantees at the Annie E. Casey Foundation on the use of neighborhood level data to track changes in child and family well-being in D.C. and other cities.

5/11/07 – Convening: Washington Area Women's Foundation Second Annual Research Briefing.

5/22/07 – Presentation: DC CASH Campaign end of tax season results.

NeighborhoodInfo DC has analyzed tax return and client intake survey data for the DC CASH Campaign since the 2004 tax season and each year we have presented these results at briefings for the Campaign's member organizations and funders. Starting in 2007, we have expanded this analysis to include free tax preparation sites operated by Community Tax Aid and the Children's Defense Fund.

5/22/07 – Presentation: Presentation for D.C. Office of Planning Dir. Harriet Tregoning on the capacity of NeighborhoodInfo DC to track affordable housing goals for the District of Columbia.

5/24/07 – Presentation: Presentation to the D.C. Housing Cluster Meeting (directors of D.C. housing agencies, Office of Planning, and Dept. of Consumer and Regulatory Affairs; Deputy Mayor for Planning and Economic Development) on the capacity of NeighborhoodInfo DC to track affordable housing goals for the District of Columbia.

6/19/07 – Presentation: Presentation to Washington Regional Equity Network on proposal for regional equity indicators report.

3. What new analysis/program efforts are you working on?

The World Bank has funded us for the three-year East of the River Initiative to work with four local nonprofit organizations doing youth development work in Wards 7 and 8. Activities under this grant will include providing technical assistance to the nonprofits on how they can better monitor and report on their impacts, and preparing a State of D.C. Youth report in collaboration with the D.C. Alliance of Youth Advocates.

We are collaborating with the Center for Responsible Lending on a study of subprime lending in Washington, D.C., being carried out for the D.C. Dept. of Insurance, Securities, and Banking.

We are undertaking work in collaboration with the Brookings Institution and the 21st Century School Fund to analyze trends in D.C. public and public charter schools. This is being done at the request of the Office of the State Superintendent for Education.

We are conducting a study of disconnected youth at the request of the Mayor's Office.

4. Have you acquired new data (other than routine updates)? Have you completed any notable system or web site improvements? Please describe.

We have started working with new data on foreclosure notices and building code violations. Work with these data is still preliminary.

We are collaborating with the National Low Income Housing Coalition on developing a catalog of affordable housing in the District of Columbia.

5. What upcoming events/activities (with dates) present an opportunity to showcase NNIP?

None.