

CHARLOTTE-MECKLENBURG

HOUSING INSTABILITY

Housing Instability and Homelessness Report Series



Housing Instability and Homelessness Report Series

Housing Instability in Charlotte-Mecklenburg

2015

Prepared by "MAY" Charlotte Housing Institute as part of a study funded by
Charlotte-Mecklenburg Housing for All, a project of the Charlotte-Mecklenburg
Community Development Corporation.

CHARLOTTE- MECKLENBURG STRATEGIES FOR AFFORDABLE HOUSING DEVELOPMENT



September 2016

CHARLOTTE- MECKLENBURG EVICTIONS

Part 1:
An Introduction to
Evictions in Charlotte-
Mecklenburg

Released September 2017

CHARLOTTE- MECKLENBURG EVICTIONS

Part 2:
Mapping Evictions

Released 2018

CHARLOTTE- MECKLENBURG EVICTIONS

Part 3:
One-month snapshot
of eviction court records

Released 2018

Housing Instability and Homelessness Report Series

Housing Instability in Charlotte-Mecklenburg

2015

Prepared by MHC Charlotte Housing Institute as part of a series of reports from the
Charlotte-Mecklenburg Housing Institute, a division of the Charlotte-Mecklenburg Housing
Institute, a division of the Charlotte-Mecklenburg Housing Institute.

CHARLOTTE- MECKLENBURG STRATEGIES FOR AFFORDABLE HOUSING DEVELOPMENT



September 2016

CHARLOTTE- MECKLENBURG EVICTIONS

Part 1:
An Introduction to
Evictions in Charlotte-
Mecklenburg

Released September 2017

CHARLOTTE- MECKLENBURG EVICTIONS

Part 2:
Mapping Evictions

Released 2018

CHARLOTTE- MECKLENBURG EVICTIONS

Part 3:
One-month snapshot
of eviction court records

Released 2018

EVICTIIONS

EVICTION

An action to **force** a tenant with a written or oral lease to move from the premises where they reside.

Formal eviction

Legal process

Informal eviction

Outside of legal process



Housing assistance non-profits



Housing assistance non-profits

Legal Aid



Housing assistance non-profits

Legal Aid

Sheriff's Office



Housing assistance non-profits

Landlord

Legal Aid

Sheriff's Office



Housing assistance non-profits

Landlord

Legal Aid

Apartment association

Sheriff's Office



Housing assistance non-profits

Landlord

Legal Aid

Apartment association

Sheriff's Office

Government





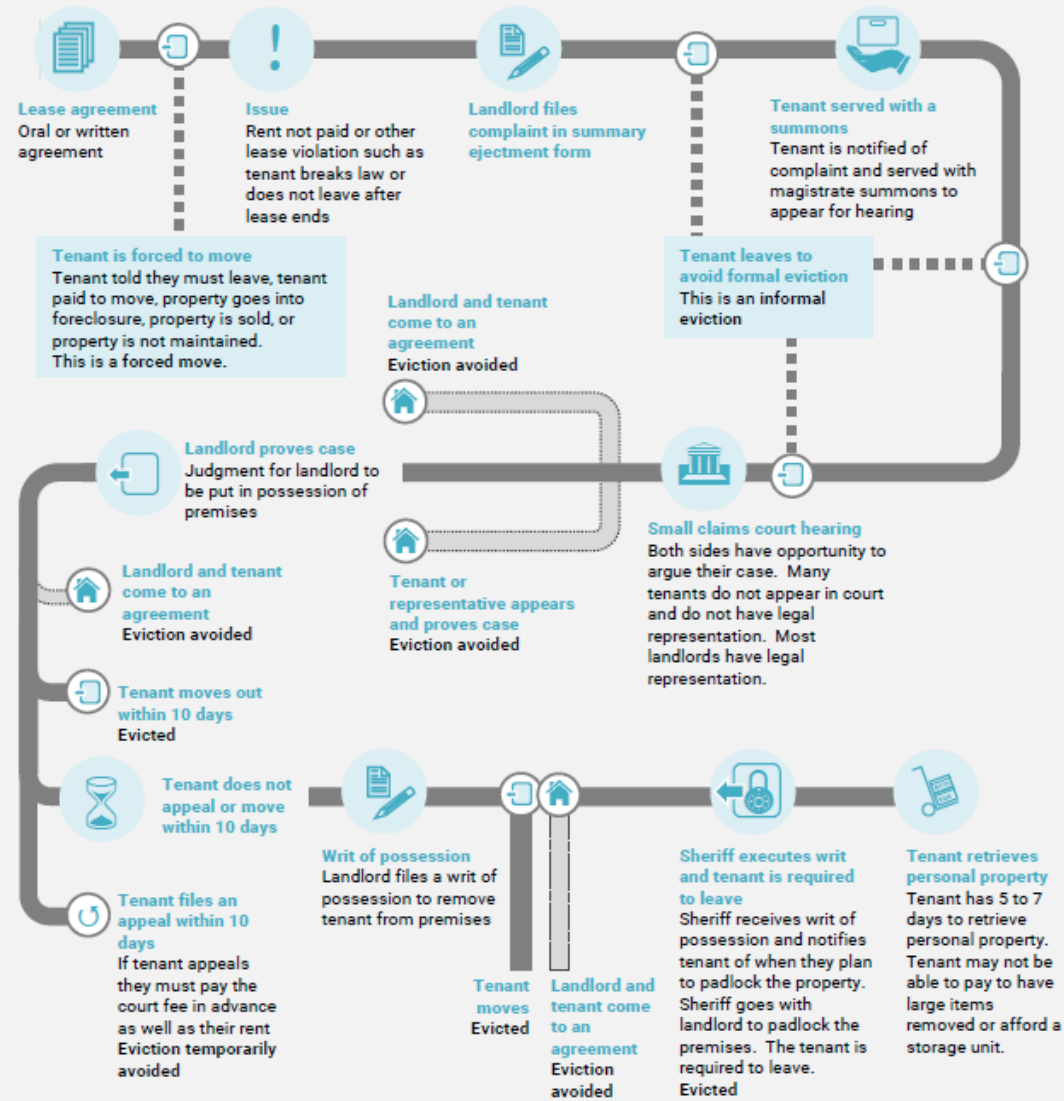
Create a resource with an introduction to evictions

1

Create a resource with an
introduction to evictions

LOCAL CONTEXT

Diagram 1. Eviction Process in Mecklenburg County



- ☒ CITIZENS
- ☐ COURTS
- ☐ EMPLOYEES

CITIZENS

[...](#) / [...](#) / [Statistics](#) / [Case Activity Reports](#) / 2016-2017

Case Activity Reports - Fiscal Year 2016 - 2017

• Civil Case Processing System (VCAP) Load Activity Reports

- [Caseload Activity Report](#) (district, superior, small claims, estates, special proceedings)
- [District Domestic Aging Analysis Report](#) (Support Not IV-D, Dom Rel-No Child Support)
- [Superior Court Civil Aging Analysis Report](#)
- [VCAP Issue Filings/Order Results](#)

• Criminal/Infractions Case Processing System (ACIS) Load Activity Reports

- [Civil License Revocation Activity Report](#)
- [Criminal/Infraction Case Activity Report by County](#)
- [Criminal/Infraction Case Activity Report by Prosecutorial District](#)
- [Felony Case Activity Report](#)
- [Infraction Case Activity Report](#)
- [Misdemeanor Motor Vehicle Case Activity Report](#)
- [Misdemeanor Non-Motor Vehicle Case Activity Report](#)
- [Public Defender Case Disposition Activity Report](#)

- ❖ [About](#)
- ❖ [Adjudicatory Hearings for Juvenile Matters](#)
- ❖ [Court Caseload Statistics](#)
- ❖ [Domestic Relations Cases not involving Child Support \(Non-IVD\)](#)
- ❖ [Domestic Violence](#)
- ❖ [Felony Convictions](#)
- ❖ [Foreclosure Filings \(calendar year\)](#)
- ❖ [Impaired Driving Charges](#)
- ❖ [Matters Alleged in Juvenile Petitions](#)
- ❖ [NC Courts Offense Codes](#)
- ❖ [NC Judicial Branch Annual Report](#)
- ❖ [payNCTicket Activity](#)
- ❖ [Quick Facts](#)
- ❖ [Statistical and Operational Summary](#)



AUTHOR
MATTHEW DESMOND DISCUSSES

EVICTED

POVERTY AND PROFIT
IN THE AMERICAN CITY

PUBLIC PRESENTATION

—
SEPTEMBER 27
SPIRIT SQUARE
6:30PM



CENTER FOR
THE LIVING CITY

2

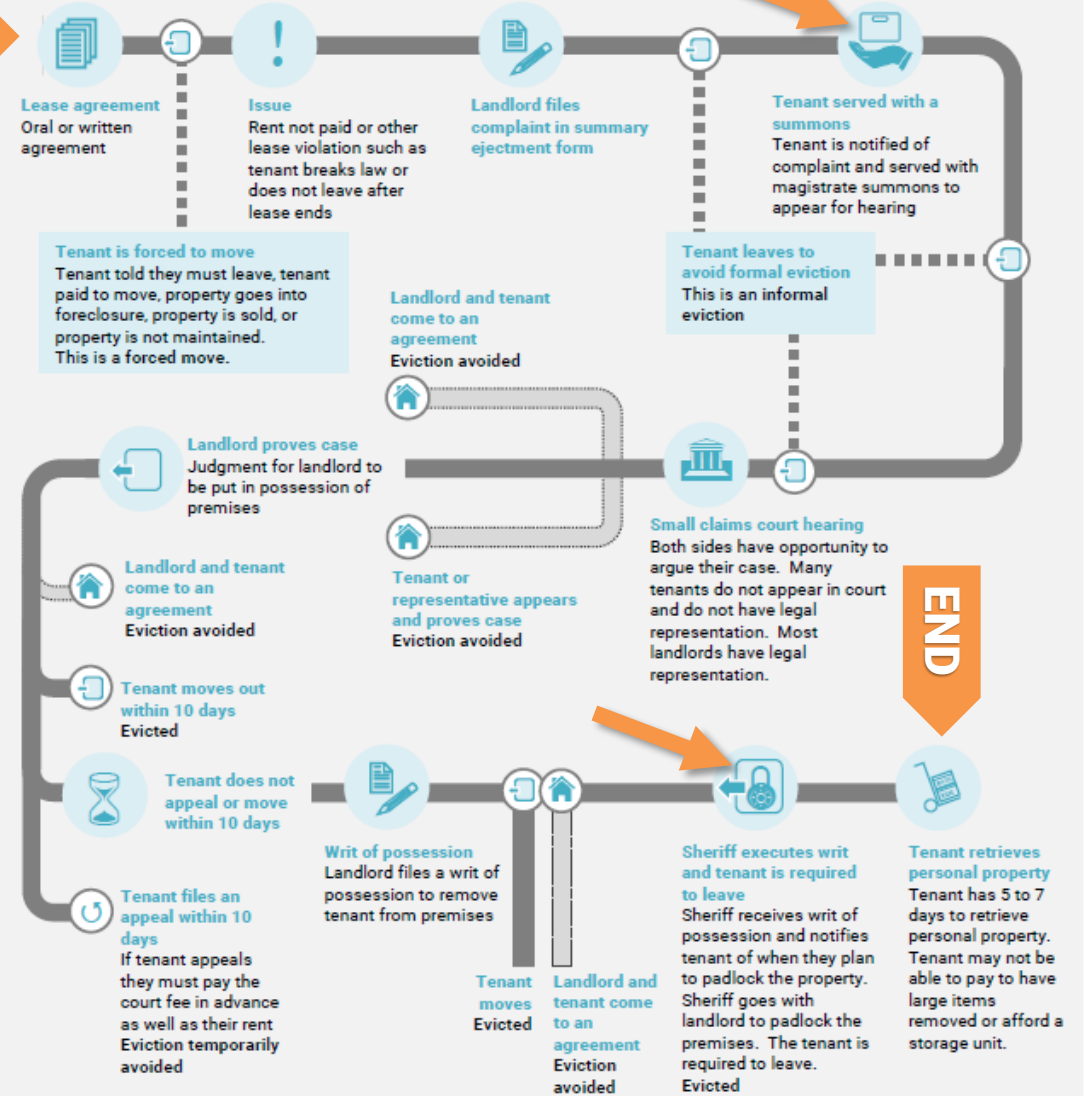
Show where evictions are taking place



FY2003 – FY2015

Diagram 1. Eviction Process in Mecklenburg County

START

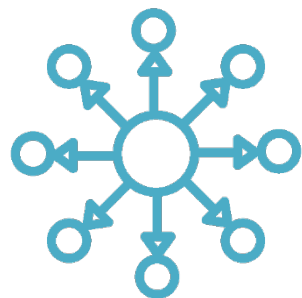


END



Charlotte/Mecklenburg
Quality of Life Explorer

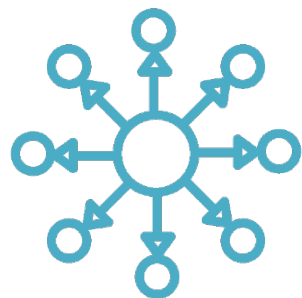




From FY2003 to FY2015,
the number of areas
where evictions
concentrated increased
and gradually shifted
outward toward the edges
of the county.

Complaints in summary ejectment

FY2003 – FY2015

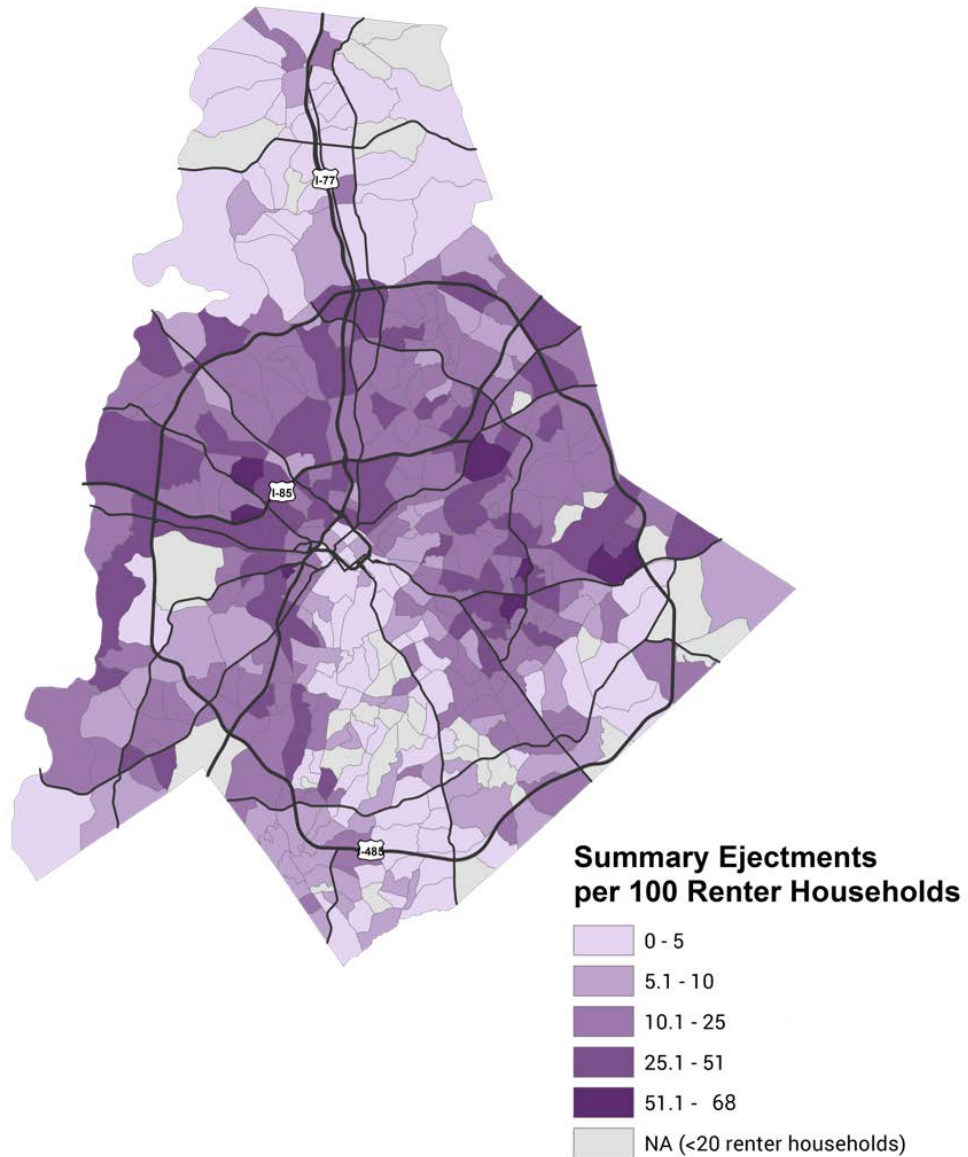


From FY2003 to FY2015,
the number of areas
where evictions
concentrated increased
and gradually shifted
outward toward the edges
of the county.

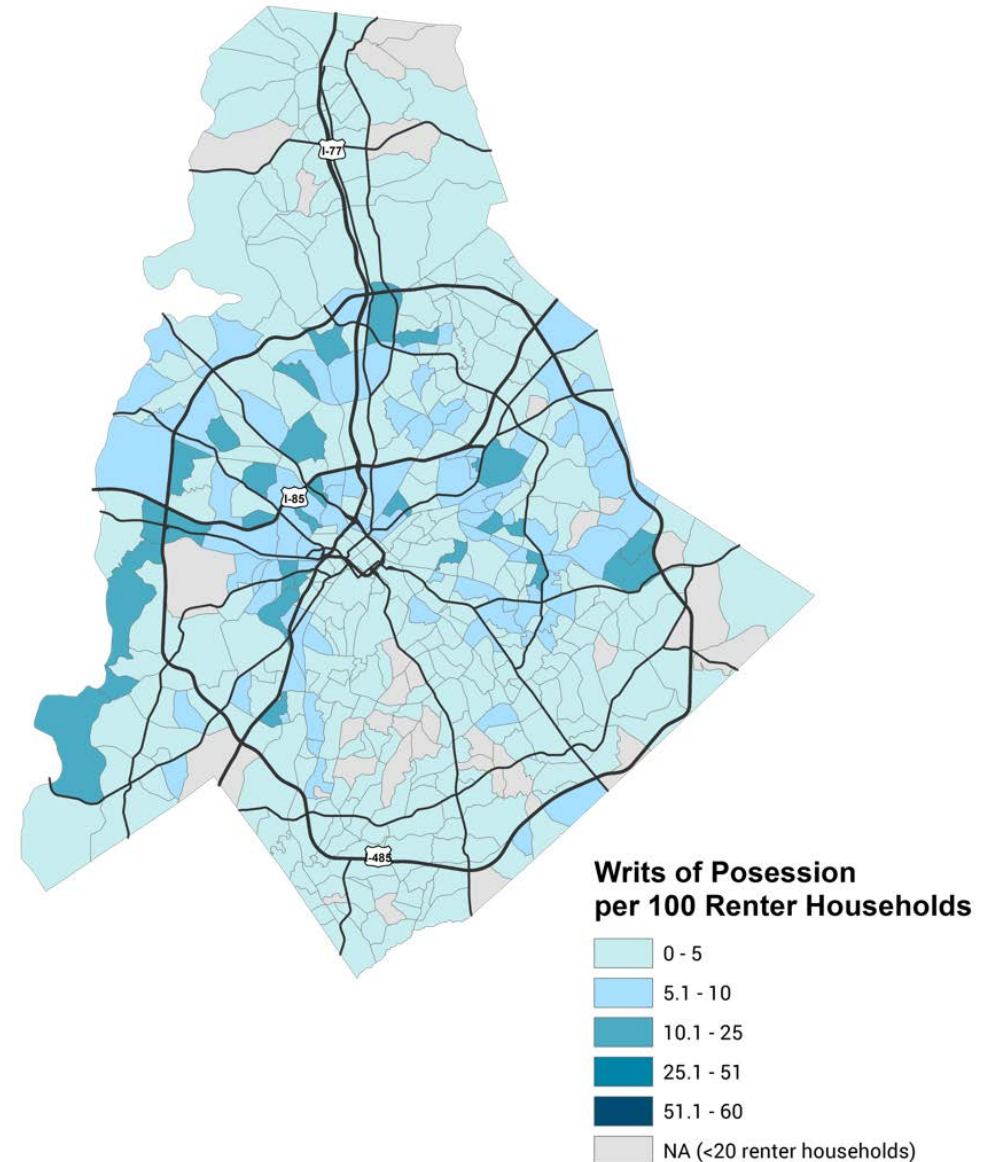
Writs of possession

FY2003 – FY2015

Complaint in Summary Ejectments, FY2015

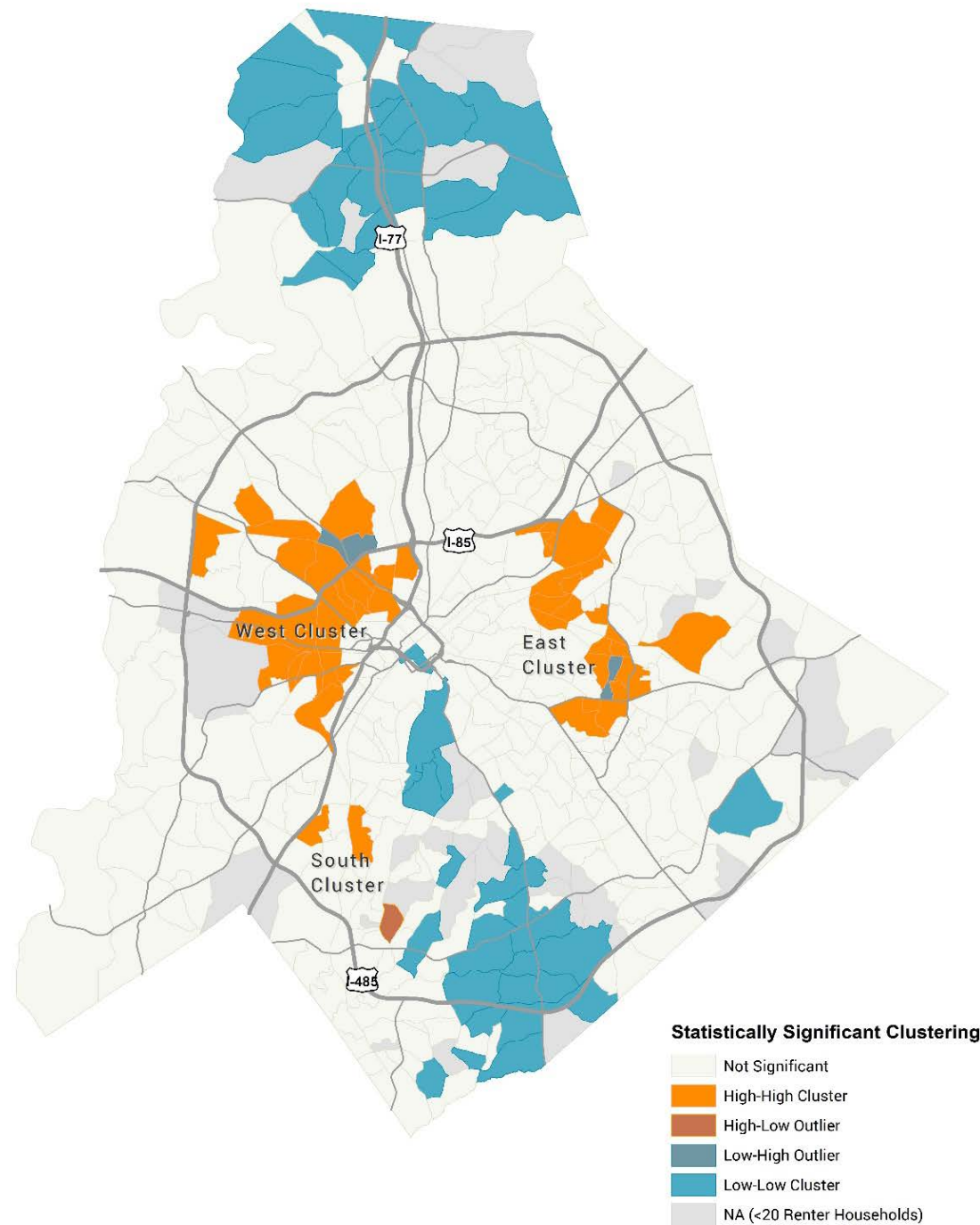


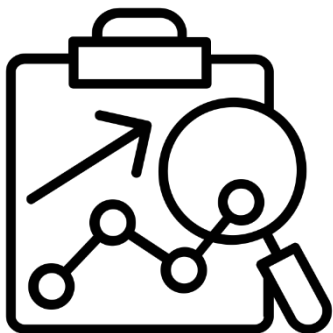
Writs of Possession Served, FY2015



Clusters of Summary Ejectments

FY2015



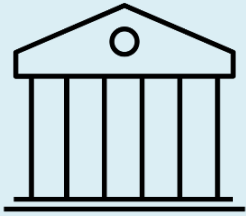


- Our model found that this has an impact (statistically significant)
- Our model found that this did not have an impact (not statistically significant)

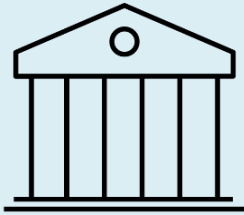
	Does this have an impact?	Is it associated with a higher or lower rate?
Black/African-American (2010)	■	↑
Public Nutrition Assistance (2015)	■	↑
Population under 18 (2015)	■	↑
Percent Single Family Housing (2016)	■	↓
Residential Renovations (2015)	■	↓
Subsidized Housing (2015)	■	↓
Foreclosures (2016)	□	N/A
Housing Violations (2015)	□	N/A

3

Provide a one-month snapshot of eviction case details



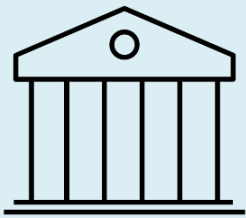
**Access case
files**



**Access case
files**



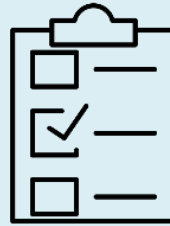
Scan



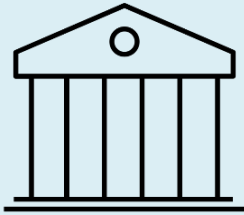
**Access case
files**



Scan



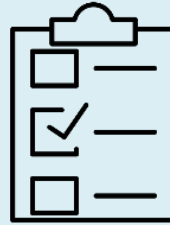
**Enter
data**



**Access case
files**



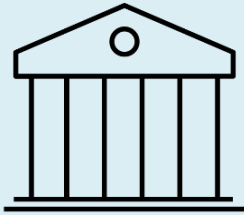
Scan



**Enter
data**



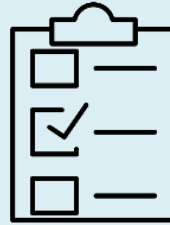
Clean data



**Access case
files**



Scan



**Enter
data**



Clean data



Analyze

SO, WHAT?

Individuals



Systems



Individuals



EDUCATION



LEGAL
REPRESENTATION

Systems



INCREASED
HOUSING ASSISTANCE



STRENGTHEN
CONNECTIONS

CHARLOTTE MECKLENBURG

HOUSING AND HOMELESSNESS DASHBOARD

NEW REPORT ON EVICTIONS

<http://MecklenburgHousingData.org>



ABOUT

Learn more information about the Dashboard



PROGRESS

See data and trends on community efforts around housing instability and homelessness



DATA SNAPSHOT

Take a closer look at the data through this interactive section



STORIES

Engage data through stories that weave together numbers and narrative



RESEARCH

Access local, regional and national research on housing instability and homelessness