

DATAHAVEN

25 Years of Data for Community Action

Measuring well-being and opportunity
in Connecticut neighborhoods

Mark Abraham

Executive Director, DataHaven

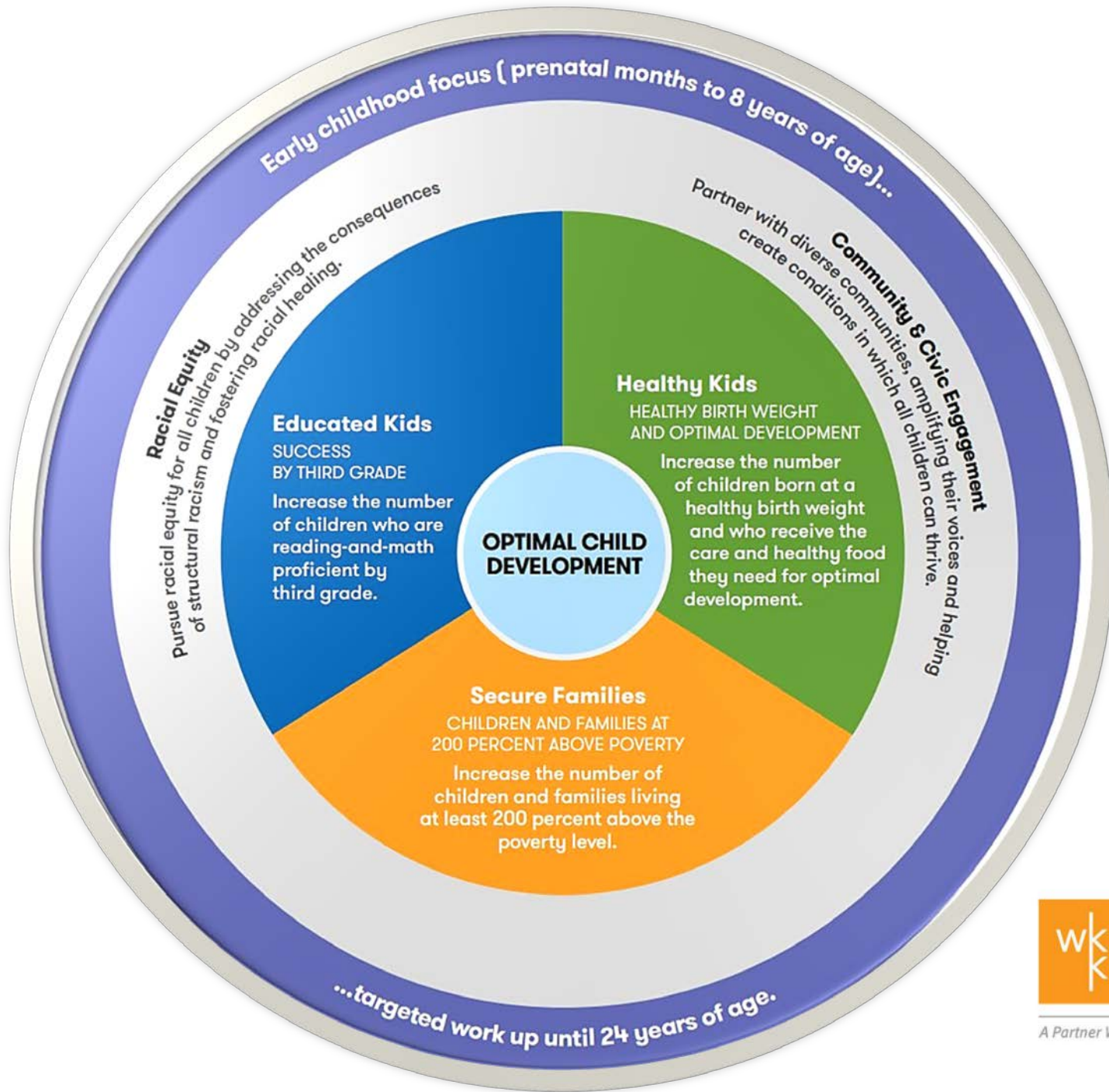
Fellow, W.K. Kellogg Foundation

Email: info@ctdatahaven.org

Phone: (203) 500-7059 Twitter: [@ctdata](https://twitter.com/ctdata) / [@urbandata](https://twitter.com/urbandata)



**NATIONAL NEIGHBORHOOD
INDICATORS PARTNERSHIP**



W.K.
KELLOGG
FOUNDATION™

A Partner With Communities Where Children Come First

DATAHAVEN

Data for Community Action



Outcome Category	<i>Example</i>
Shift in Social Norms	<i>Public awareness & attitudes</i>
Strengthened Organizational Capacity	<i>Leadership development, infrastructure</i>
Strengthened Alliances	<i>Partners & “unlikely allies”</i>
Strengthened Base of Support	<i>Efficacy of people & alliances (e.g., voting, influential backers)</i>
Improved Policies	<i>Funding, pilot programs, research</i>
Changes in Impact	<i>Population and system conditions</i>

Reference: Annie E. Casey Foundation / ORS, 2007

DATAHAVEN

Data for Community Action



"If you want to achieve an equitable outcome, it starts with disaggregated data. We need to have the courage to look within ourselves and see who is, and who isn't, doing well."

-Angela Blackwell, PolicyLink, at Ford Foundation, 2/2014



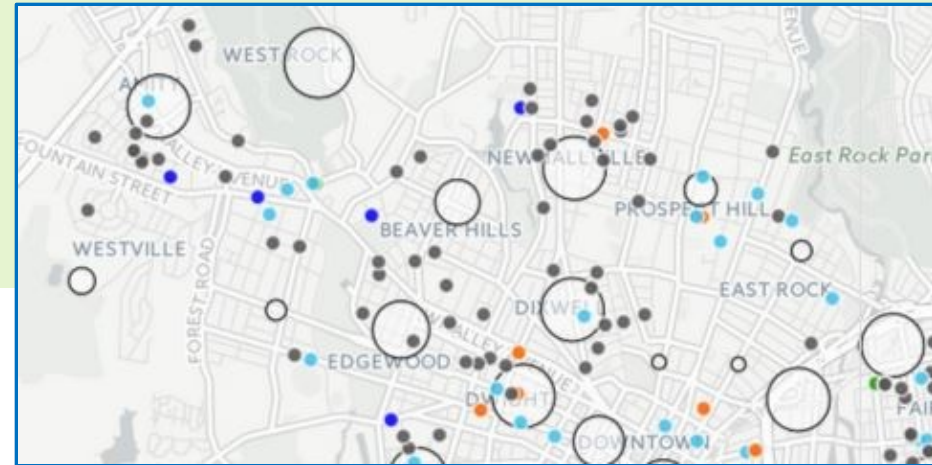
"[Data] is about whether we really want to have a democracy, and whether we really want to empower folks who are disempowered now."

-New Haven Mayor Toni Harp, at Hartford Library, 3/2014

DATAHAVEN

Data for Community Action

New Haven Early Childhood Council

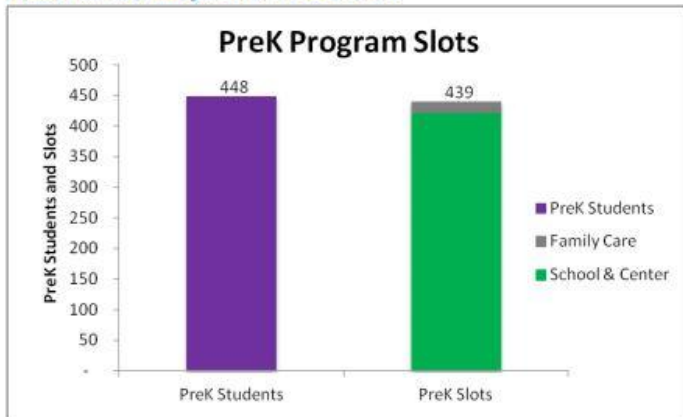


2013-14 New Haven PreK Enrollment and Accessibility
Commissioned by New Haven Early Childhood Council

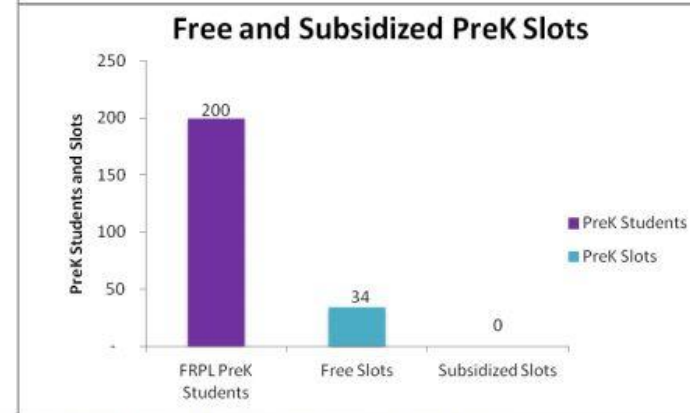
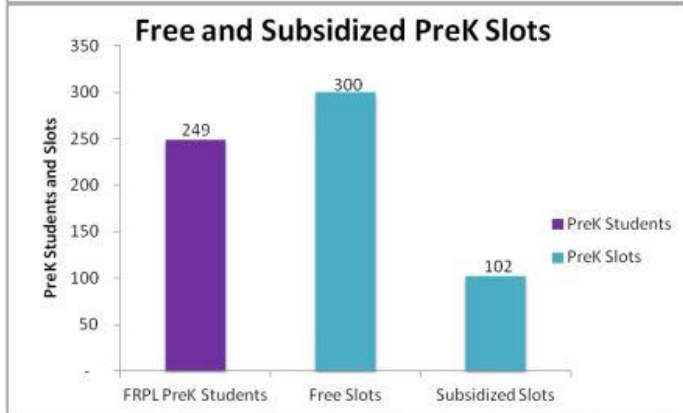
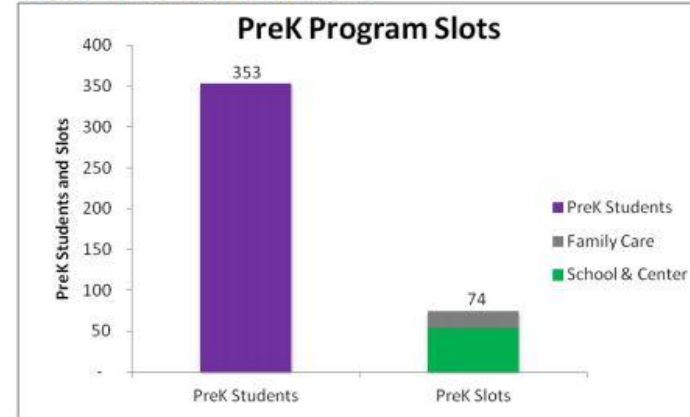
March 2015
Assembled by DataHaven

DataHaven interactive map
<http://cdb.io/1FlyrnI>

Westville, Amity, and West Rock

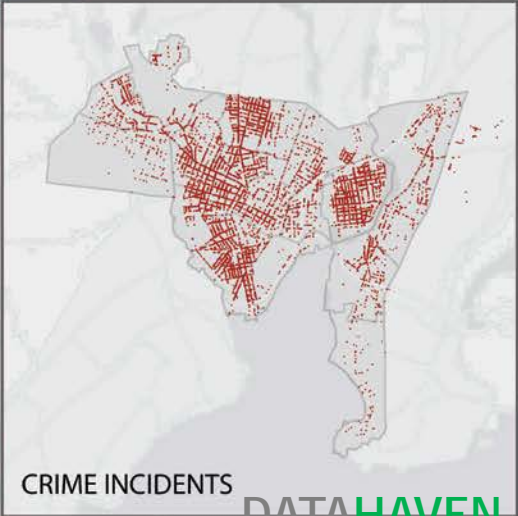
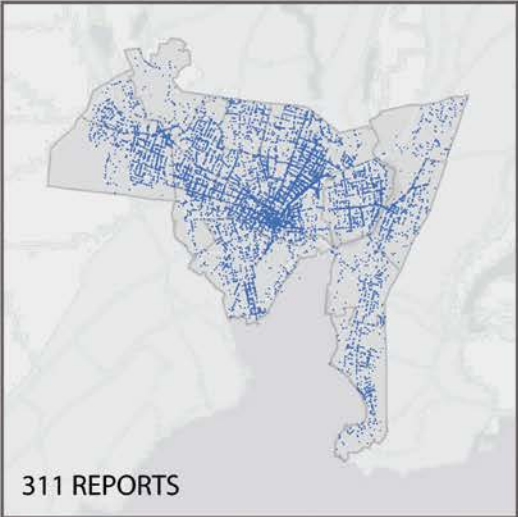
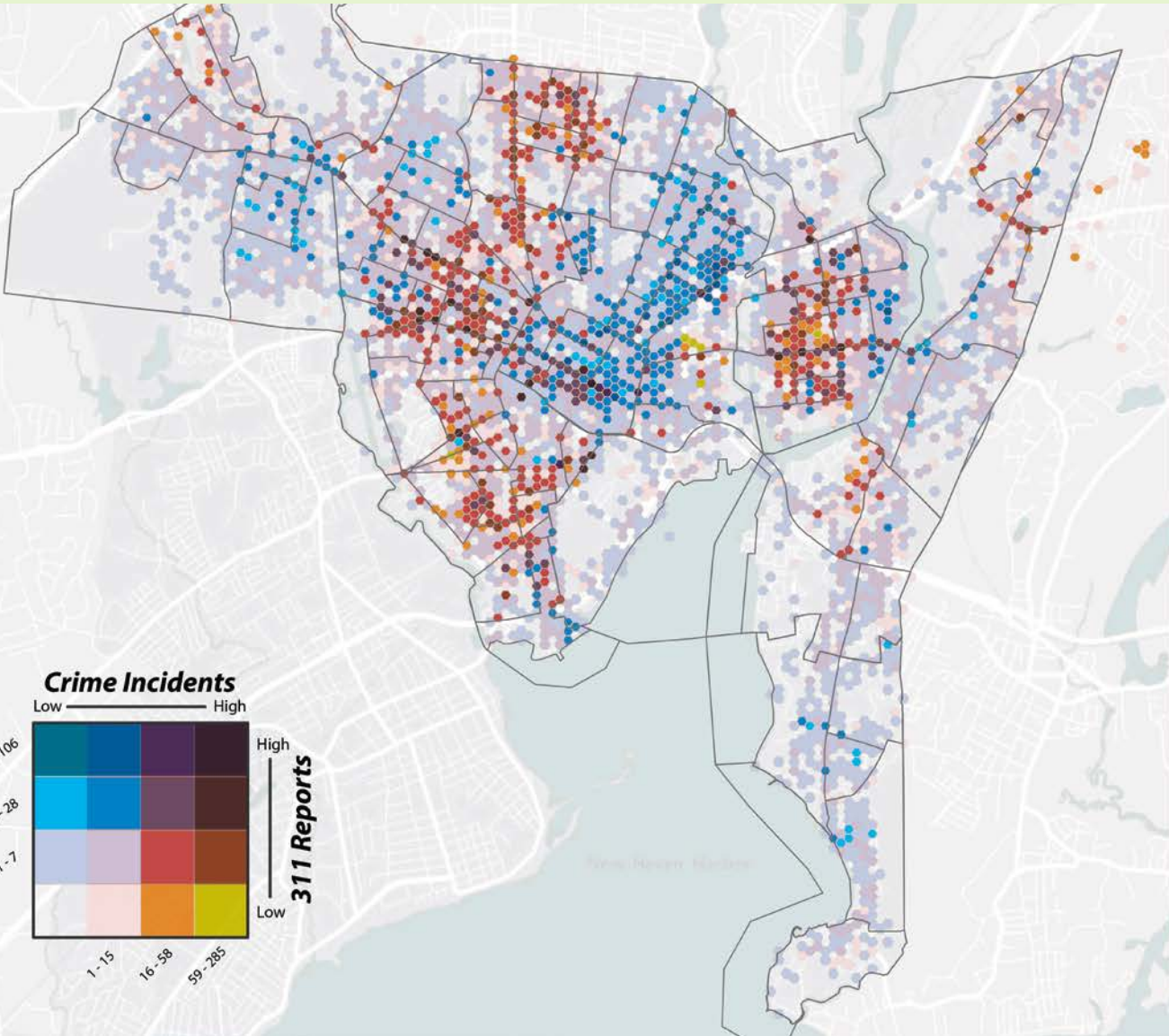


Beaver Hills and Newhallville



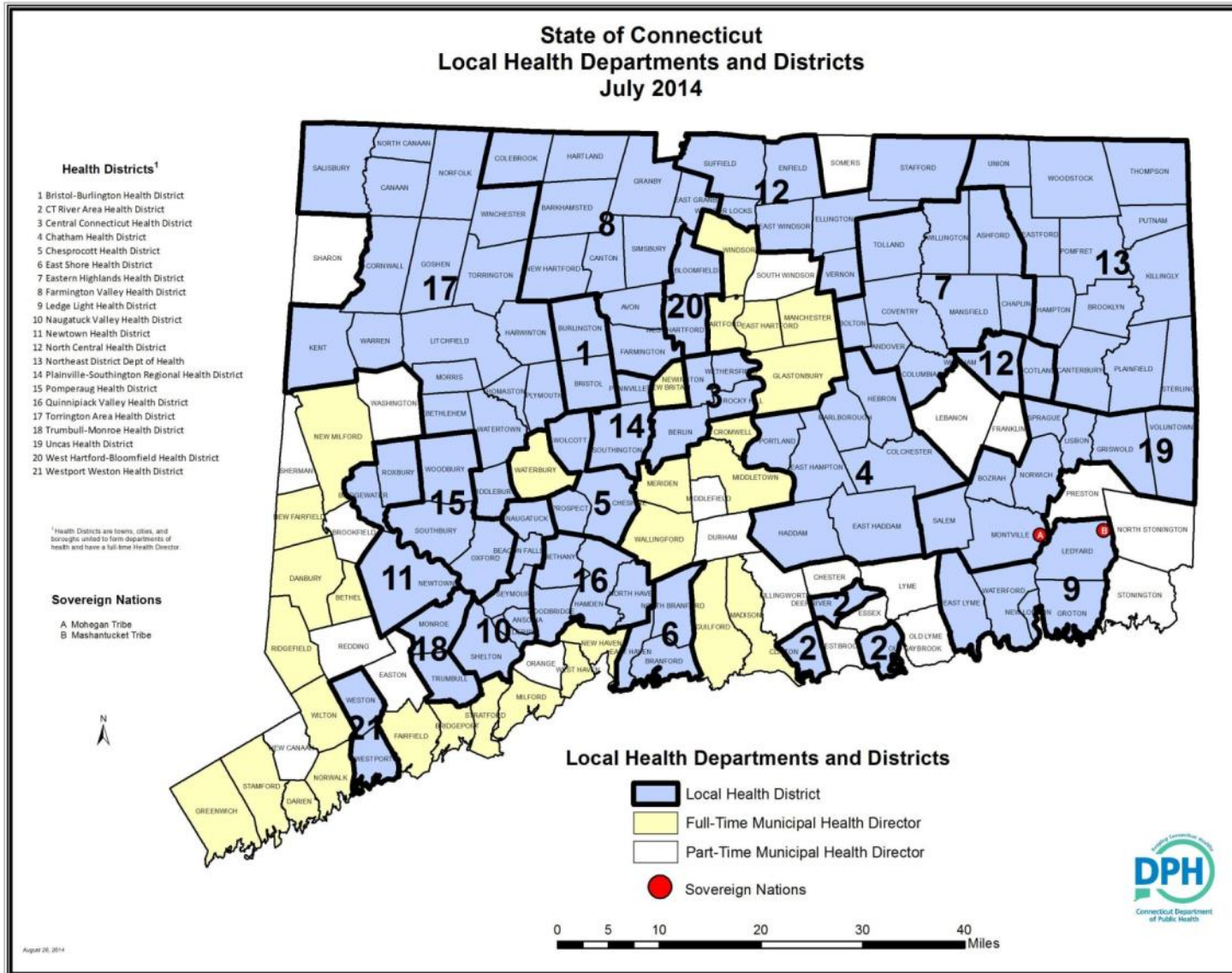
DATAHAVEN

Data for Community Action



Community Wellbeing Survey – Rationale

**169 Towns,
Median
Population:
13,000**



Community Wellbeing Survey – Items Measured

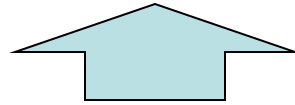
Individual Wellbeing and Quality of Life



Civic Satisfaction*

Community Optimism

Civic Engagement

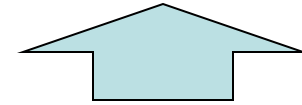


Health Outcomes*



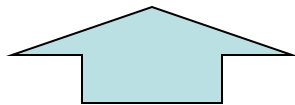
Health Behaviors

Healthcare Access



Employment*

Food & Housing Security*



Neighborhood Environment (Safety, Parks, Walkability, Social Cohesion)

Education Access Economic Mobility Transportation Housing Quality

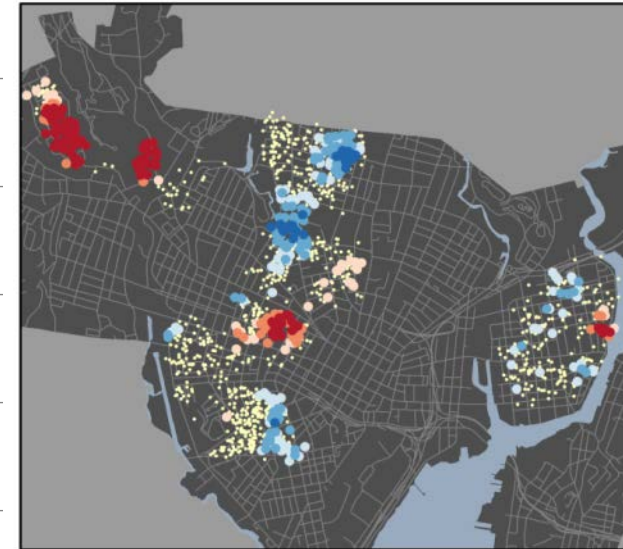
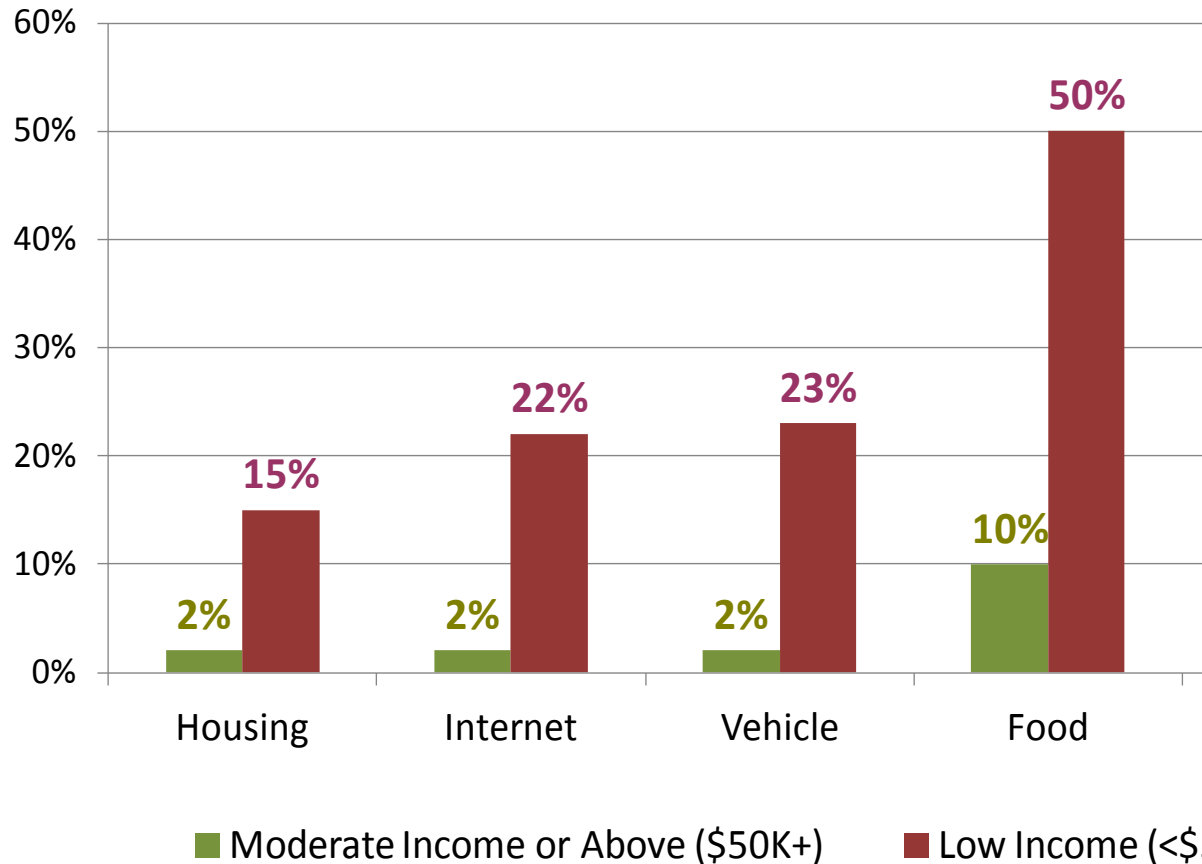
Macroeconomic Trends Demographics (e.g., children under 5)

* = *Key determinant of individual well-being (OECD, 2014)*

DATAHAVEN

Community Wellbeing Survey – Example Data

Percent of GNH families with children who did not have access to...



People in This Neighborhood
Can Be Trusted

Tim St. Onge, August 2014

AZAVEA
SUMMER of MAPS

Prepared for

DATAHAVEN
Data for Community Action

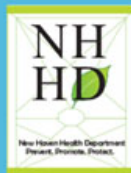
Greater New Haven Community Index 2013

Benchmarking the **People,**
Economic Opportunity, Health Needs,
and **Civic Life** of Our Region

A Core Program of DataHaven

DATAHAVEN

Celebrating 20 Years of Data
for Community Action



with funding from the
Donaghue Foundation and Kresge Foundation

ANNIE E. CASEY FOUNDATION
NEWALLIANCE FOUNDATION

UNITED WAY OF GREATER
NEW HAVEN

THE UNITED ILLUMINATING
COMPANY AND SOUTHERN
CONNECTICUT GAS

Lead Author

Mark Abraham

Co-Authors

Sarah Conderino

Nicholas Defiesta

Amanda Durante

Mario Garcia

Matthew Higbee

Jeannette Ickovics

Augusta Mueller

Jonathan Park

Download

www.ctdatahaven.org

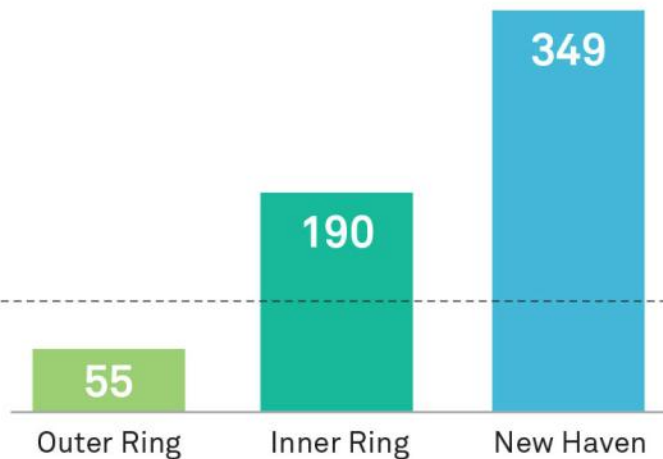
Community Index

Asthma 4.13

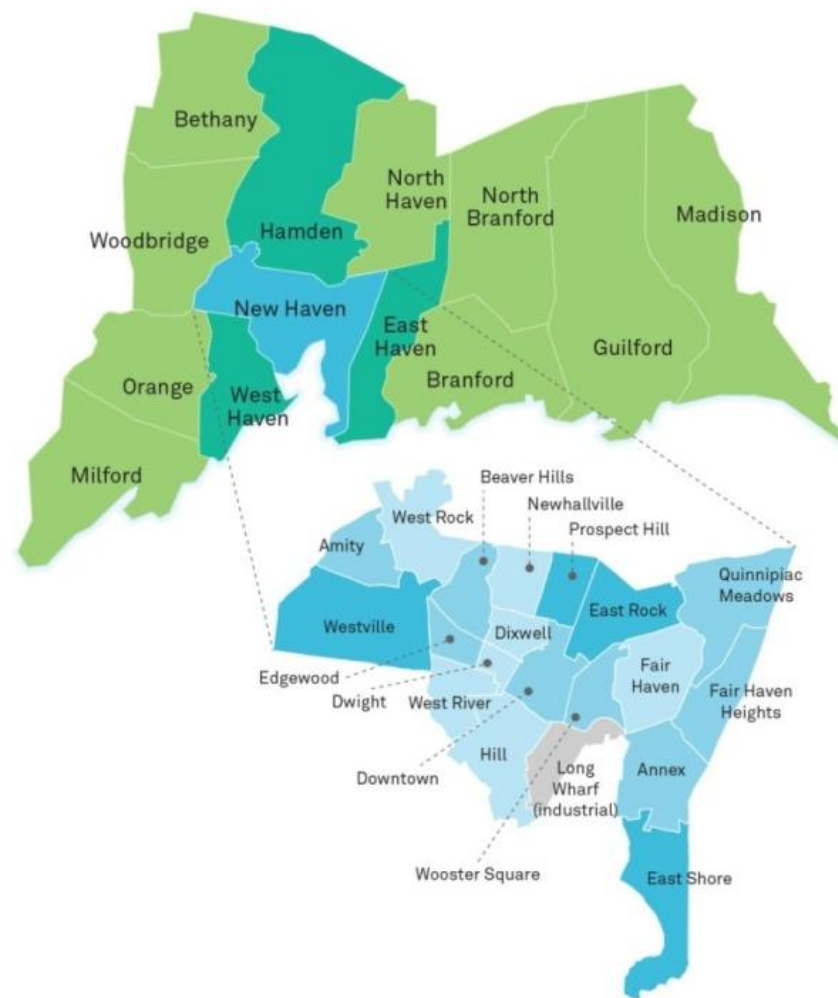
ER visits per 10,000 people, annual average, 2010-2012

96

Healthy People
2020 National
Target



Age	HP2020	Outer Ring	Inner Ring	New Haven
< 5	96	55	190	349
5-64	50	31	56	130
65+	14	13	13	24



Community Index

Key Values

Measure what matters

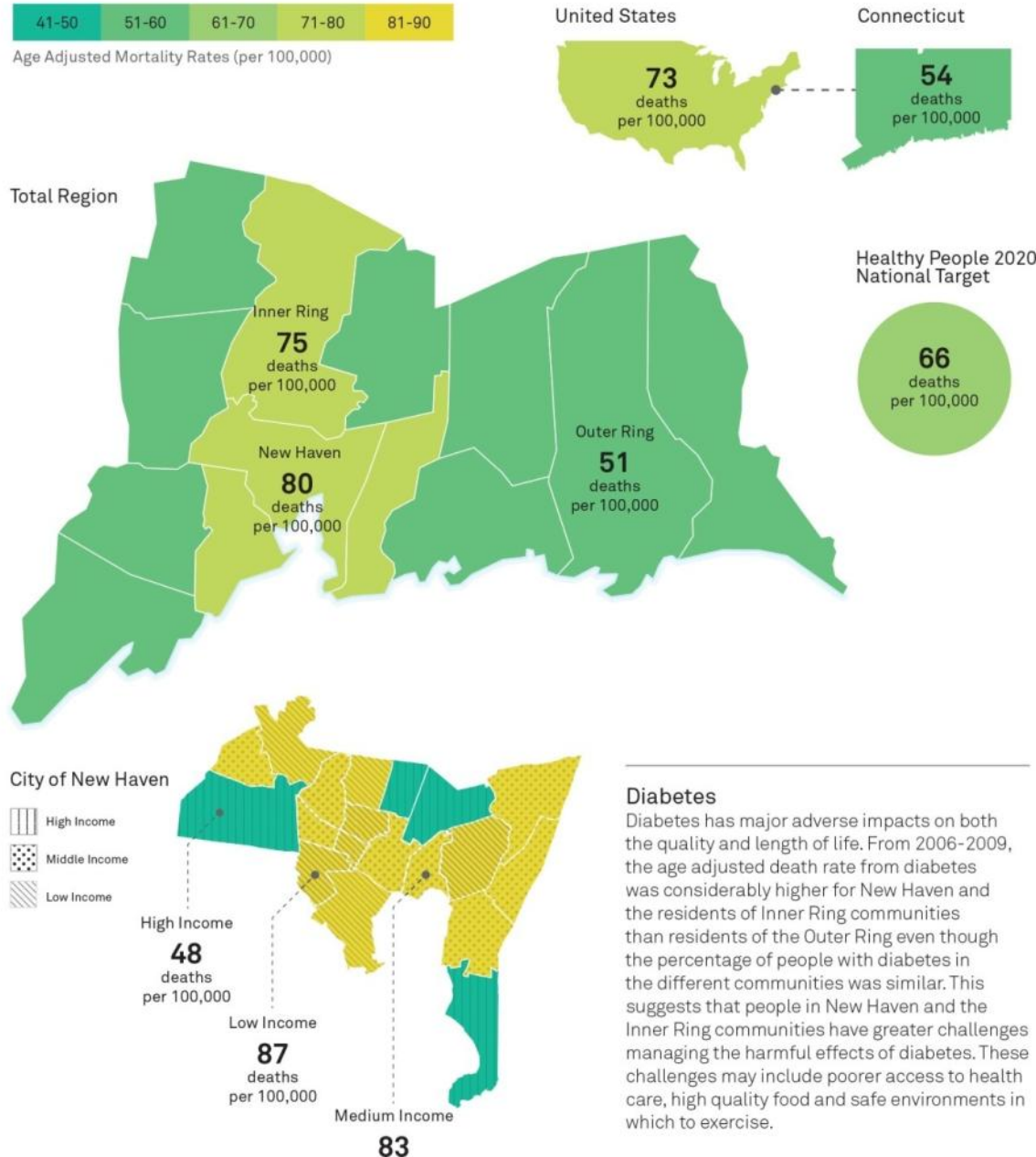
Neighborhood-level data

National and state context

Reliable, stable baselines



Diabetes Age Adjusted Mortality Rates , 2006-2010 4.14



Diabetes

Diabetes has major adverse impacts on both the quality and length of life. From 2006-2009, the age adjusted death rate from diabetes was considerably higher for New Haven and the residents of Inner Ring communities than residents of the Outer Ring even though the percentage of people with diabetes in the different communities was similar. This suggests that people in New Haven and the Inner Ring communities have greater challenges managing the harmful effects of diabetes. These challenges may include poorer access to health care, high quality food and safe environments in which to exercise.

Community Index – Measuring Results

NEW HAVEN INDEPENDENT
IT'S YOUR TOWN. READ ALL ABOUT IT.

Branford Eagle Crime Log **LaVoz** Search New Haven Independent GO

Sections
choose

Neighborhoods
choose

Features
choose

Follow Us
facebook
twitter

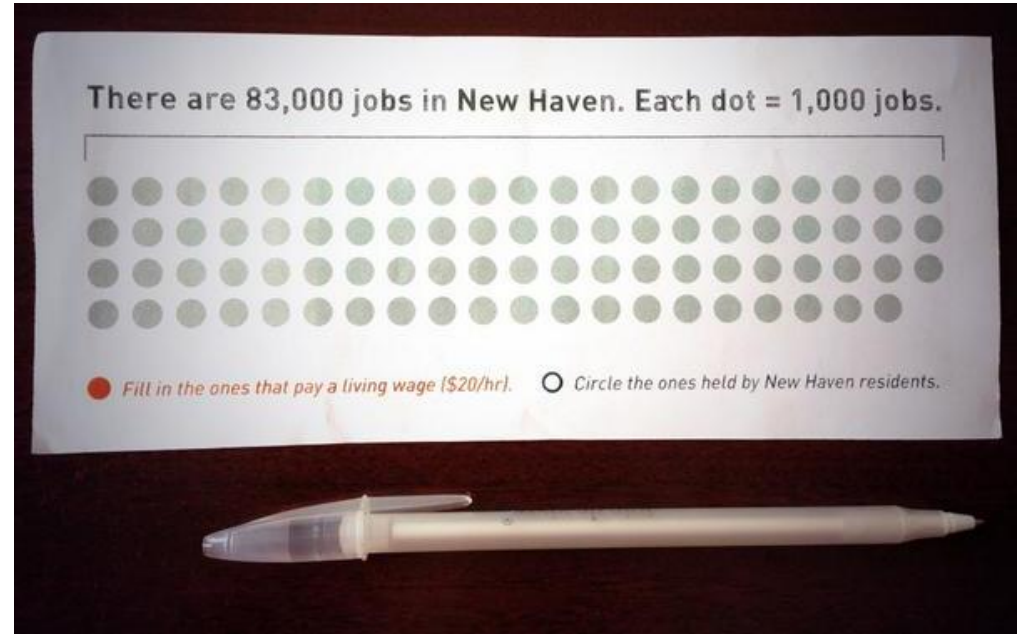
NHI Newsletter
SIGN UP

Legal Notices
AGENCY ON AGING
ALDERMEN
HOUSING AUTHORITY
CITY CLERK
PROBATE COURT

Some Favorite Sites

Big Data Backs Up Hunches—& Offers Some Surprises
By Allan Appel | DEC 12, 2013 9:21 AM
(8) Comments | Commenting is closed | E-mail the Author
Posted to: Social Services

Christian Community Action's Rev. Bonita



NEW HAVEN REGISTER

News Sports Business Entertainment Lifestyle Obituaries Opinion Politics

BREAKING NEWS
Record-breaking number of people take the plunge in West Haven to benefit childhood cancer

New Haven divided by growing income disparity
NEW HAVEN >> The divide between New Haven's have and have-nots is growing, and at a more rapid clip than the state and the country, according to an analysis by DataHaven, which collects and analy... 14 11:00 AM

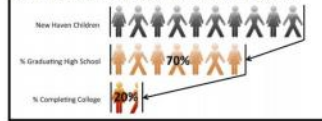


Community Index – Measuring Results

COLLEGE AND CAREER newhaven City Transformation Plan

goal: all youth graduate prepared for success in college and career

Fact: 70% of New Haven students starting high school graduate in four years. Only 20% of these graduates complete college or other certificate programs within 6 years.



Tell us what you think!
What can New Haven do to help?



WE WILL...

Hold organized discussions with young people, families, schools, and employers about how to plan for a successful job/career

Include career skills building and internship opportunities in school so that high school graduates are equipped to get jobs

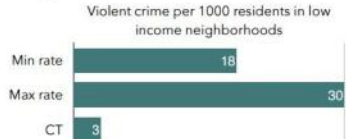
Provide coaching and financial support for first-generation college students, and develop individual Student Success Plans for all students

- Increase internship slots to 250 by 2018
- Increase students enrolling without remediation from 14% to 40% by 2020
- Increase number of students receiving scholarships to 400 by 2020

FIGHT CRIME

goal: all neighborhoods are safe and all residents get a second chance

Fact: From 2005-2012, violent crime rates were much higher than the statewide average in the lower income neighborhoods



Tell us what you think!
What can New Haven do to help?

Deaths from Assault, 2006-2010, DataHaven



WE WILL...

Help communities police themselves by building trust between residents, community organizations, and New Haven Police Department

Provide support for employment, housing, and other needs for residents reentering from prison through the Fresh Start Reentry Initiative and Project Longevity

Reconnect at-risk youth with individualized coaching, support, and access to services via community-based initiatives

- Reduce the violent crime rate in lower income neighborhoods from 18-30/1,000 people in 2005-2012 to less than 6/1,000 by 2018
- Increase number of youth reached by YouthSTAT from 300 in 2014 to 500 by 2017
- Reduce recidivism rate for adults and youth by 25% by 2020

Who needs to get involved?

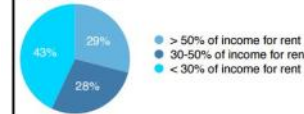
Community Management Teams
Community Agencies and Businesses
New Haven Police Department
US Attorney



AFFORDABLE HOUSING newhaven City Transformation Plan

goal: healthy homes at all income levels

Fact: There are 54,000 housing units in New Haven. 11,340 units receive housing subsidies. 29% of residents are severely cost-burdened



Tell us what you think!
What can New Haven do to help?



WE WILL...

Fund projects for lead paint removal, energy efficiency, and universal access, and redevelop older subsidized housing properties

Build new residential developments with committed affordable units for families, elderly, and single residents

Enforce New Haven Housing Standard so all homes are safe and well maintained

- Redevelop 400 units of public housing by 2020
- Support the rehabilitation of 300 units of private subsidized housing by 2020
- Complete an additional 100 affordable housing units in private developments by 2018
- Reduce the number of households paying too much for housing from 57% now, to 40% by 2025

Who needs to get involved?

New Haven Housing Authority
Livable City Initiative
Private and non-profit developers
Banks and other lenders
Community Loan Fund

DataHaven

[Reports](#) [Communities](#) [Data Resources](#) [About](#) [Blog](#) [Knowledge Center](#) [Q](#)

Data for community action

[Learn More >](#)



ctdatahaven.org