

The background of the slide is a map with various green and blue shaded regions, possibly representing different data categories or geographical areas. The text is overlaid on this map.

Increasing access to local data to inform racial equity initiatives

Mark Abraham, Executive Director, DataHaven
Email: info@ctdatahaven.org

Note of gratitude

- Data publishers
- Data users, including members of the National Neighborhood Indicators Partnership
- DataHaven staff
- Community partners throughout Connecticut
- Family



Note of gratitude

- Data publishers
- Data users, including members of the National Neighborhood Indicators Partnership
- DataHaven staff
- Community partners throughout Connecticut
- Family



Connecticut Town Equity Reports: Publishing new information for all 169 towns

Reports use new approaches to analyze data from:

- 2020 Census
- American Community Survey
- Other state and federal agencies
- 2015-2021 DataHaven Community Wellbeing Survey (over 40,000 live, in-depth interviews of randomly selected adults)



<https://www.ctdatahaven.org/equityreports>

APR. 28, 2016, AT 12:55 PM

'Normal America' Is Not A Small Town Of White People

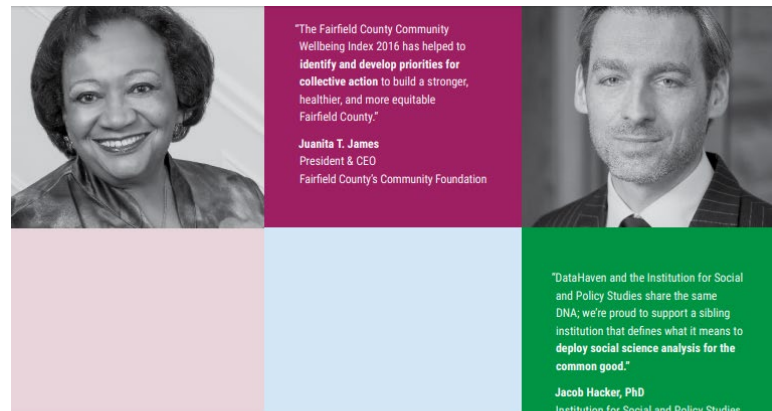
By Jed Kolko

Filed under Demographics



About DataHaven

- Non-profit with a 25-year history of public service to Connecticut
- Mission is to empower people to create thriving communities by collecting and ensuring access to data on well-being, equity, and quality of life
- Free technical assistance to 200 agencies per year on use of federal, state, and local data
- DataHaven is a formal affiliate of the National Neighborhood Indicators Partnership of the Urban Institute (Washington, DC)

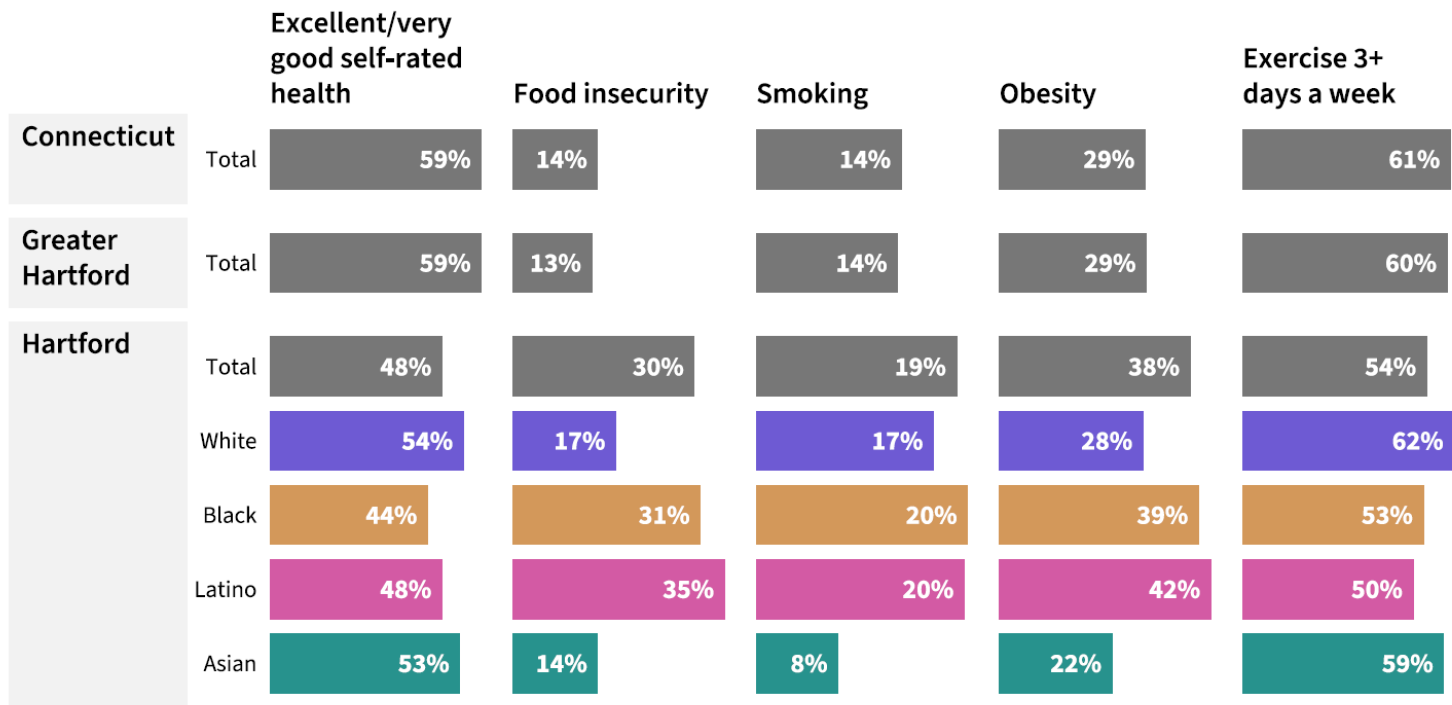


Measuring Our Impact



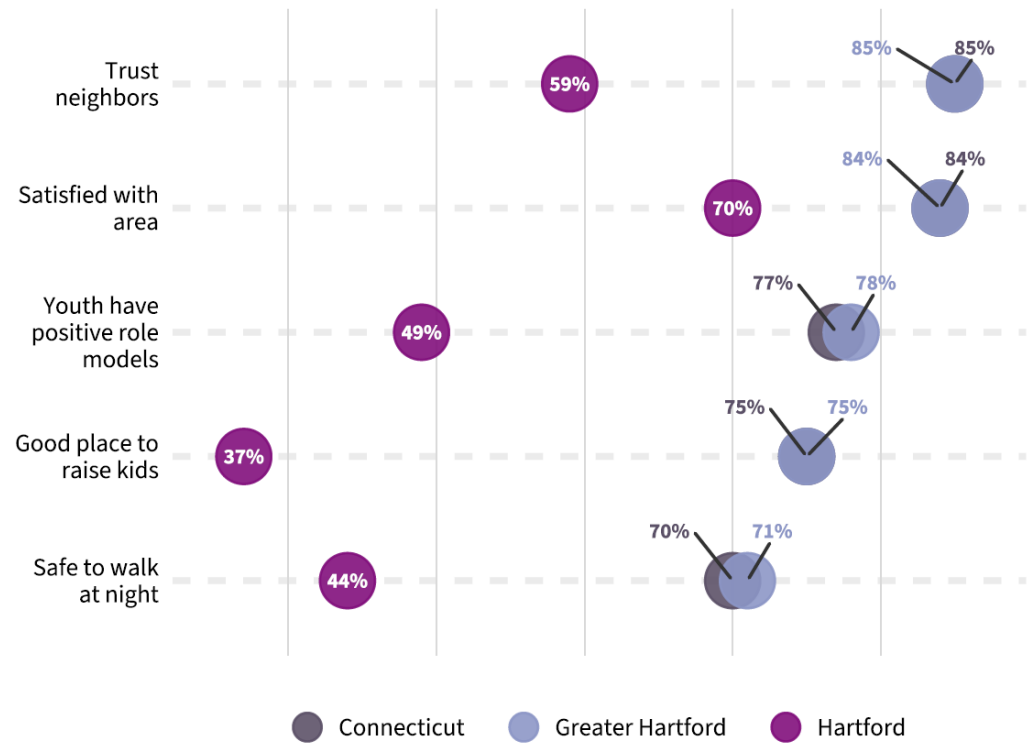
Survey data

FIGURE 17: SELECTED HEALTH RISK FACTORS, SHARE OF ADULTS, 2015–2021



Survey data

FIGURE 25: RESIDENTS' RATINGS OF COMMUNITY COHESION MEASURES, SHARE OF ADULTS, 2015-2021



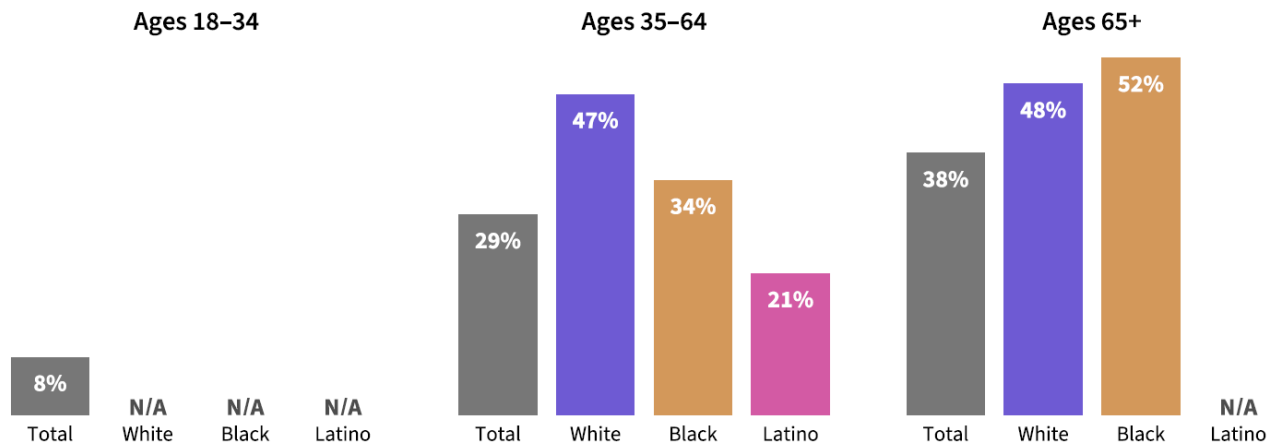
Census microdata

TABLE 4: HOMEOWNERSHIP RATE BY RACE/ETHNICITY OF HEAD OF HOUSEHOLD, 2021

Area	Total	White	Black	Latino	Asian
Connecticut	66%	76%	41%	37%	60%
Greater Hartford	65%	77%	44%	33%	55%
Hartford	26%	37%	32%	16%	N/A

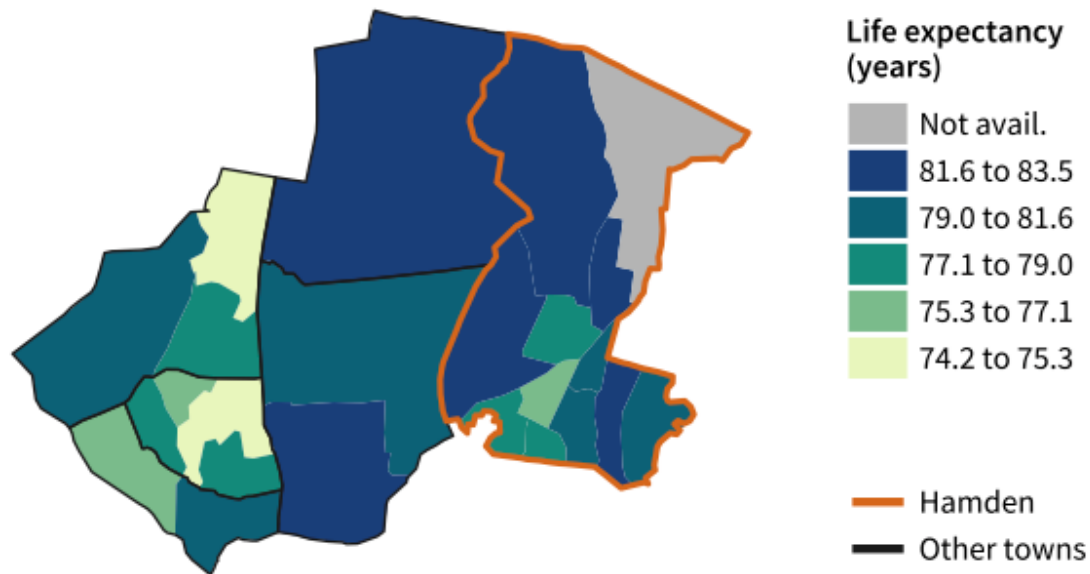
Younger adults are less likely than older adults to own their homes across several race/ethnicity groups. However, in most towns, younger white adults own their homes at rates comparable to or higher than older Black and Latino adults.

FIGURE 5: HOMEOWNERSHIP RATES BY AGE AND RACE/ETHNICITY OF HEAD OF HOUSEHOLD, HARTFORD, 2021



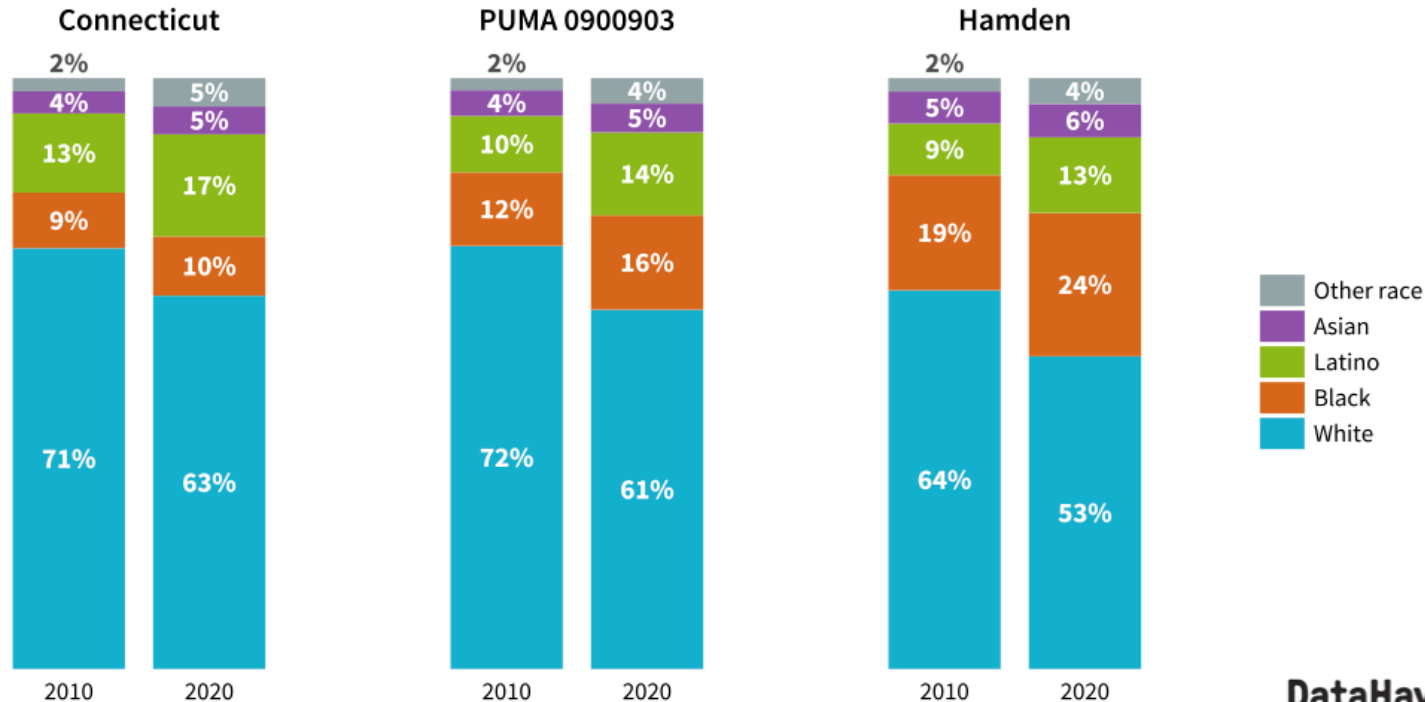
Implications of location

Life expectancy, PUMA 0900903 by Census tract, 2015



Who lives where & how is that changing?

Share of population by race/ethnicity, 2010–2020



DataHaven

Audiences

- Residents
- Town-level committees on inclusion, racism as a public health crisis, equity and sustainability
- Town-level elected officials and candidates
- Non-profit organizations, and other programs that serve residents in defined geographic areas
- K-12 schools and higher education
(ctdatahaven.org/classroom)
- State legislators (DataHaven has also produced legislative district profiles), state or regional advocacy groups



Examples of op-eds and news coverage

EMILY TANG-LEE

Empowering community through data

I grew up in Brooklyn in a scrappy refugee family, one that didn't have much money but that valued education. My experience is one I see reflected in the Stamford community, in families across the city.

My mom worked as an admin at a large company and my dad was a taxi driver. We were a family eligible for free lunch. My parents tried to keep worries about money to themselves, but even in elementary school I knew that to ask for a school trip was to ask my parents to pay for something we might not be able to afford. Mom and dad's engagement with teachers was through report cards and parent-teacher conferences. No one told them to join a parent-teacher organization and, besides, they didn't have time or energy to spare. My parents' English was good enough but not their first language and as I got older, I often found myself at the computer, inputting data on my parents' behalf.

Through my parents' encouragement and my own hard work, I forged a path to higher education, going through New York City's specialized public schools, then to the Top 25 liberal arts college Hamilton, and finally to Johns Hopkins for my master's degree.



Contributed photo

Emily Tang-Lee

My parents are wonderful parents who set me and my brother up for success, despite their income. But it took an inordinate amount of effort to get us to where we are today, and I wonder what would have happened to us if we didn't have the good fortune of having my parents, who were at least armed with information they could use to guide us on our education journey. What happens to the other children, who are equally bright?

This is where a quality education, nonprofit organizations and local government come in.

I feel so lucky to call Stamford my home. There is a vibrant community of do-gooders, philanthropists, and political activists here, all working toward a brighter future for our neighbors. But even as I'm buoyed by optimism, the data shows a lack of equity and opportunity. If we are to be responsible to our neighbors, we ought to

address these issues.

A recent report by DataHaven, a Connecticut-based nonprofit that empowers people to create thriving communities through data, points to a few indicators of well-being that should sound the alarm bells for us all.

This is what the report found for Stamford:

► **43 percent of all households are cost-burdened**, meaning they spend 30 percent or more of their total income on housing costs. After keeping a roof over your head and food on the table, this leaves little else, or nothing at all, for low-income families to invest in their futures.

► **There is a gulf in median household income between groups.** While median household income for white households is \$124,000, for Black families in Stamford it's less than half that — \$49,000. Similarly, the median household income of a Latino household is

\$55,000. Racial disparities in employment, pay and education are the through line.

In a high-cost area such as our own, we must find ways to grow the earning potential of our neighbors through "tried and true" solutions such as workforce development, wage growth, and high-quality public education, while keeping our

hearts and minds open to innovative solutions offered through public-private partnerships, nonprofit organizations, and community leaders.

► **Nearly 1 in 5 people age 5 and older is "linguistically isolated,"** meaning they speak English less than "very well," making it more challenging to take advantage of essential services such as health care, social services or school. With limited access to even basic needs, the path to success narrows.

It is my hope that this data will drive us to action — to volunteer or contribute to your neighborhood association or local nonprofits, to support your candidate of choice in local elections, or simply to share this article for greater awareness. Through collective action we can ensure a thriving community that offers equitable opportunity for all.

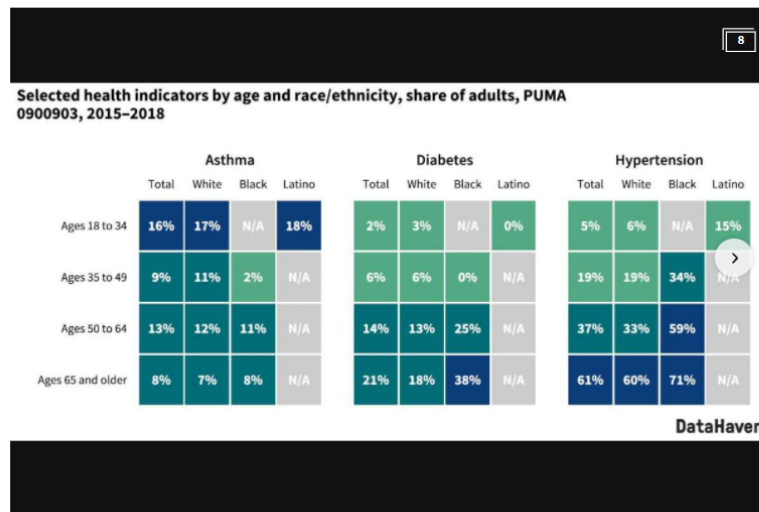
Emily Tang-Lee serves on the board of directors of Inspira, a Stamford-based nonprofit organization serving individuals and families experiencing homelessness and housing insecurity. She is married to Ben Lee, a member of Stamford's Board of Representatives running for the Board of Education, and mother of two children.

Hamden's neighborhoods have wide health-related disparities, report shows



Meghan Friedmann

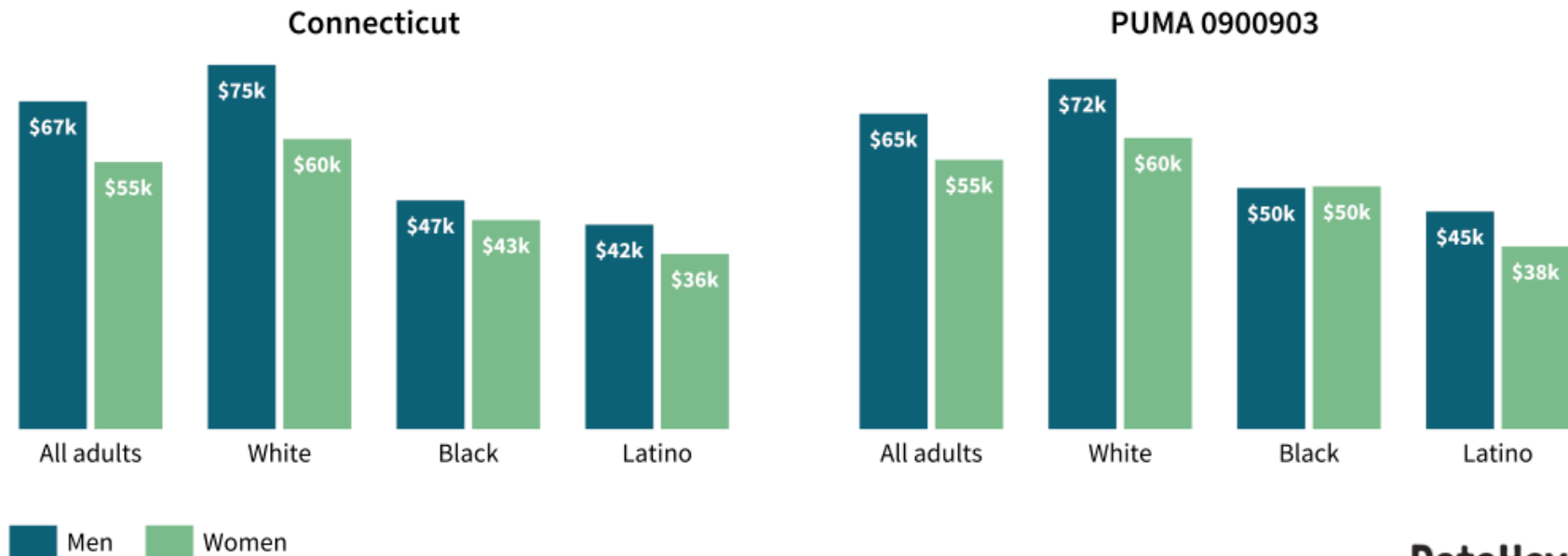
Sep. 18, 2021



1 of 8

Ongoing development: Complicated data

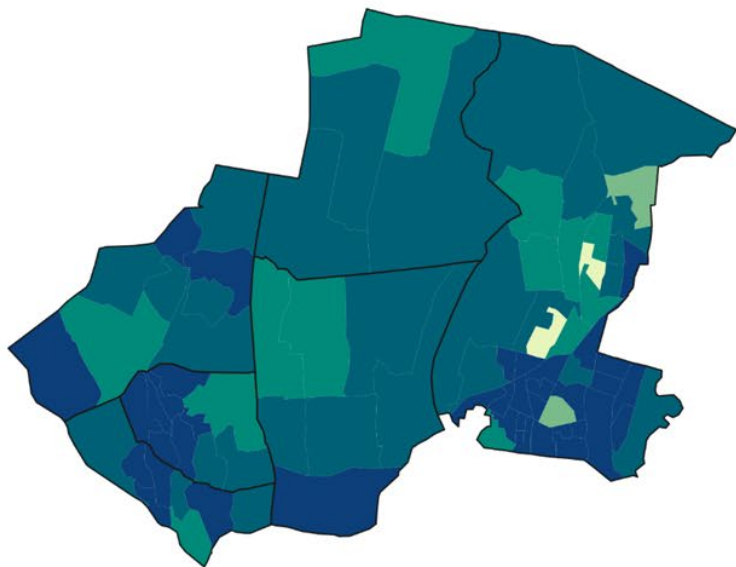
Median income by race/ethnicity and sex for full-time workers ages 25 and over with positive income, 2019



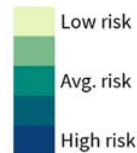
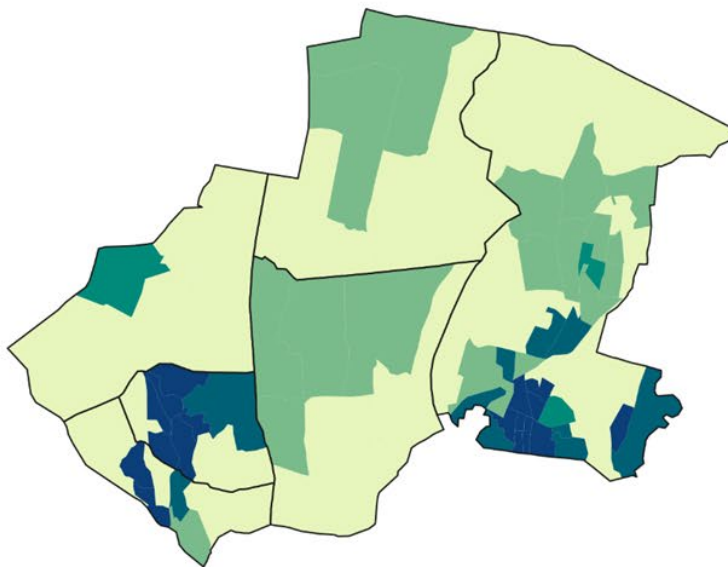
Ongoing development: Complicated data

EPA Environment Justice Index by block group, PUMA 0900903

Lead paint exposure risk, unadjusted



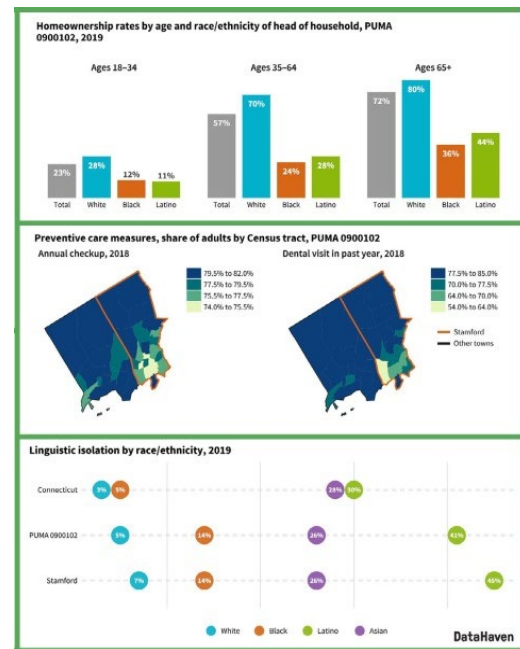
Lead paint exposure risk, EJ adjustment



Ongoing development: Complicated data

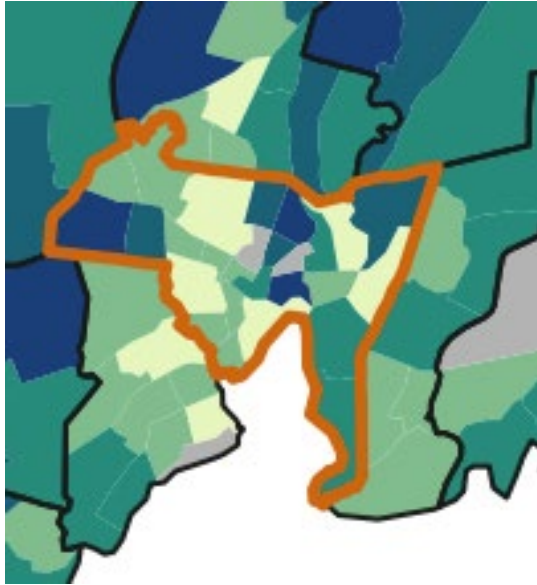
Use DataHaven Community Wellbeing Survey variables such as:

- More detailed race/ethnicity
- Language spoken
- Sexual orientation
- Gender identity, transgender-inclusive healthcare
- Disability and age-inclusivity
- Veteran status
- Experiences with incarceration or family incarceration
- Experiences of discrimination
- Experiences of other financial or social hardships



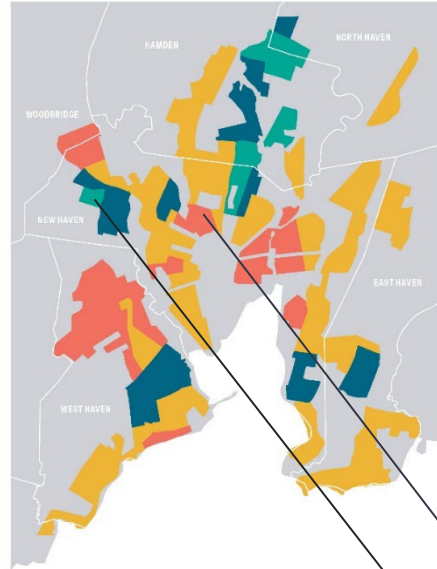
<https://www.ctdatahaven.org/equityreports>

Ongoing development: Complicated data



Life expectancy, New Haven Town Equity Report (2021), ctdatahaven.org

FIG 2.19
The patterns in 1930s redlining maps are still present today
HOLC REDLINED AREAS OF NEW HAVEN AND NEIGHBORING TOWNS, 1937



HOLC GRADE
A - BEST
B - STILL DESIRABLE
C - DEFINITELY DECLINING
D - HAZARDOUS

Life expectancy by neighborhood within New Haven:

72 years
(Newhallville)

86 years (Westville)

FIG 2.18
Homeownership is still low in lower-grade areas
HOMEOWNERSHIP RATE BY HISTORIC REDLINING GRADE, HOLC-MAPPED PARTS OF GREATER NEW HAVEN TOWNS, 2010

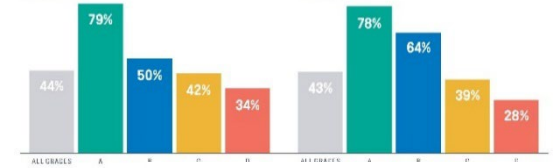


FIG 2.17
High-grade areas are still predominantly white
WHITE SHARE OF POPULATION BY HISTORIC REDLINING GRADE, HOLC-MAPPED PARTS OF GREATER NEW HAVEN TOWNS, 2010

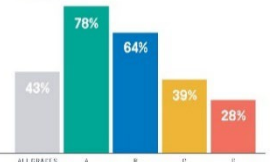
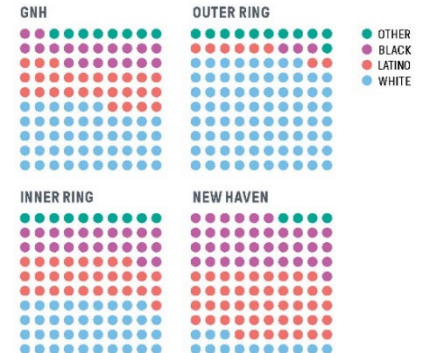
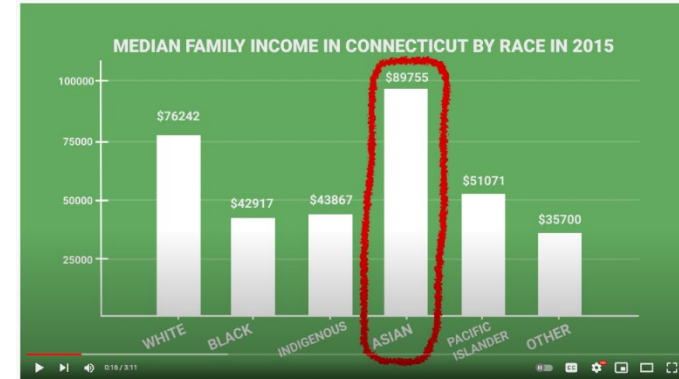


FIG 2.21
New Haven's Outer Ring school districts are much less diverse than the city's schools
COUNT OF K-12 STUDENTS BY RACE, PER 100 STUDENTS, 2018-2019

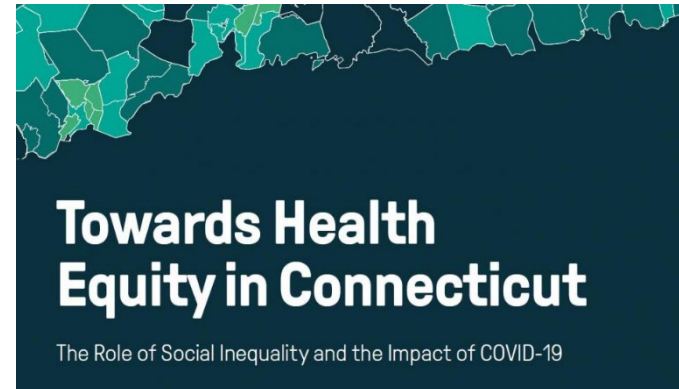


Limitations

- Many charts don't show every group, due to small sample sizes in Connecticut towns, but we often include statewide data as a benchmark
- Disparities can be "disguised" by data aggregation (e.g., Filipino within Asian race, Albanian or MENA within white race). Native American race not same as tribal affiliation.
- Staff capacity
- Federal / State data products; private data products
- Cost of surveys



CONNECTICUT
Why 'Asian American' data isn't enough



Get the reports

Contact us:

info@ctdatahaven.org

The screenshot shows the homepage of ctdatahaven.org. The browser address bar displays <https://ctdatahaven.org> with a 50% zoom level. The website header includes a navigation menu with links for Reports, Data, About, Blog, and Knowledge Center. A large banner image of a brick building at night features the text "Data for Community Action" and a button labeled "Our Reports". Below the banner, the "FEATURED CONTENT" section highlights two reports: "Connecticut Town Equity Reports" and "Survey of 5,145 randomly-selected Connecticut adults". The "ANNOUNCEMENTS" section on the right provides dates and details for the survey and equity reports.

25 DataHaven
The Twenty Fifth Year

Reports Data About Blog Knowledge Center

Data for Community Action

Our Reports

FEATURED CONTENT

Connecticut Town Equity Reports

Survey of 5,145 randomly-selected Connecticut adults

ANNOUNCEMENTS

Oct. 6, 2021: Survey of 5,145 randomly-selected Connecticut adults in Summer 2021 reveals improvements in financial well-being, changes in mask-wearing and vaccination rates, concerns about gun violence during the pandemic

Sep. 13, 2021: New: Equity Reports for All 169 CT Towns, 2020 Census Neighborhood Maps, Opioid Study

<https://www.ctdatahaven.org/equityreports>