

Tracking and Analyzing Regional Equity: The ACS and Ambiguities of Time and Space Experiences of the Regional Equity Atlas and Greater Portland Pulse

Meg Merrick, Ph.D.
Institute of Portland Metropolitan Studies
Portland State University
merrickm@pdx.edu

Presentation Outline

- Overview of the Regional Equity Atlas and Greater Portland Pulse
- Criteria for measuring equity
- Equity Analysis Sweet Spot and Implications of the ACS
- Examples:
 - Long Form to ACS: Child Poverty
 - Dealing with Uncertainty: Examples from the Regional Equity Atlas 2.0



Regional Equity Atlas 2.0

- Partnership: Coalition for a Livable Future, Metro, PSU
- Region: bi-state; 4 counties; 40 cities
- Focus: social equity
- Indicator priority:
 - *spatial resolution* over temporal resolution
- *Primary funders*: Metro; PSU; cities of Portland, OR and Vancouver, WA

Greater Portland Pulse

- Partnership: Metro, PSU
- Region: bi-state; 4 counties; 40 cities
- Focus: 9 consensus-based outcomes – *social equity embedded*
- Indicator priority:
 - *temporal resolution* over spatial resolution
- *Primary funders*: Robert Wood Johnson; Kaiser Permanente; NW Health Foundation

In an Equitable Region . . .

- Coalition for a Livable Future

All people have access to the resources necessary for meeting their basic needs and advancing their health and well-being.

All people have the power to shape the future of their communities through public decision-making processes that are transparent, inclusive, and engage the community as full partners.

All communities experience the benefits and share the costs of growth and change.

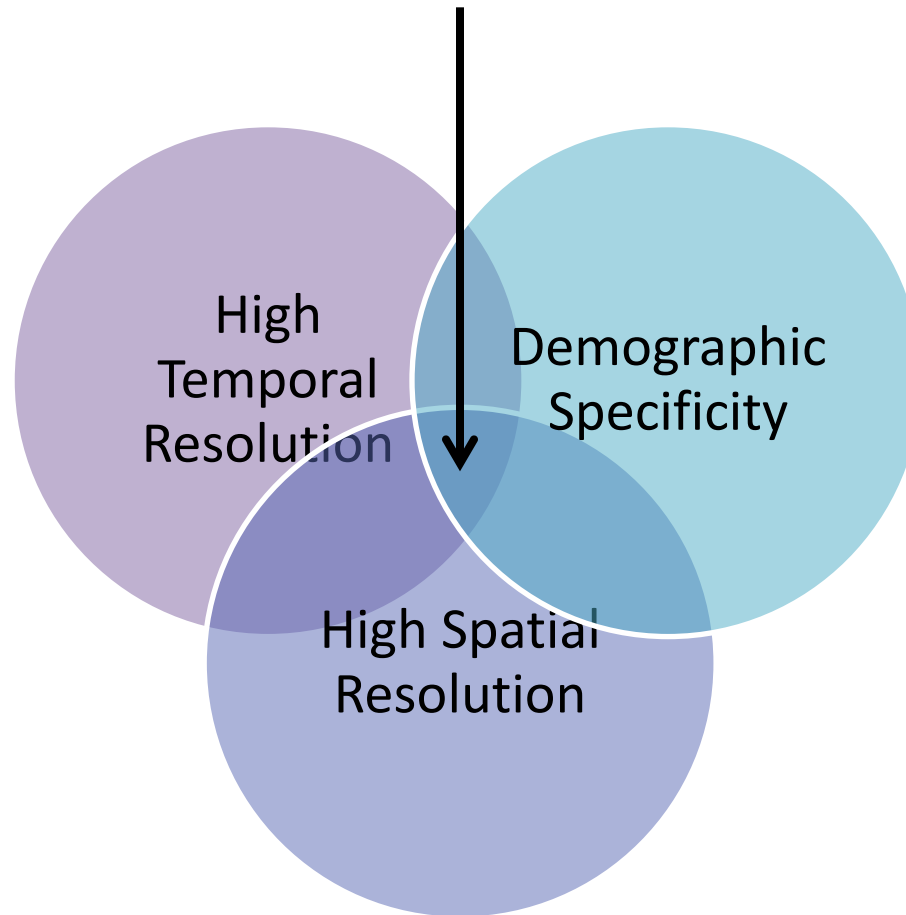
All people are able and have the opportunity to achieve their full potential and realize their vision for success.

Greater Portland Pulse's Equity Panel's Criteria

- Disaggregation: *whenever possible the indicator data should be broken down by race, ethnicity, age, and income*
- Mapping: *to understand the effects of place-based issues, it is critical to map as many indicators as possible to a neighborhood level*
- Data Availability: *to address the lack of disaggregated data at the neighborhood level, a list of “aspirational” indicators should be developed*
- Community Perspective: *the issues must be seen from the perspective of diverse communities*

Equity Analysis and Implications of the ACS

Equity Analysis Sweet Spot



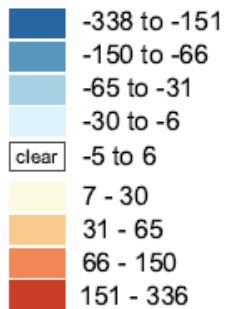
Regional Equity: Child Poverty
From the Census Long Form to the ACS

Change 1990-2000: Distribution, Children in Poverty

Portland-Vancouver
PMSA (central)

Regional Equity Atlas 1.0 1990 and 2000 Census Long Form Data

Total change within
circle 2/3 mile wide:



10-year data

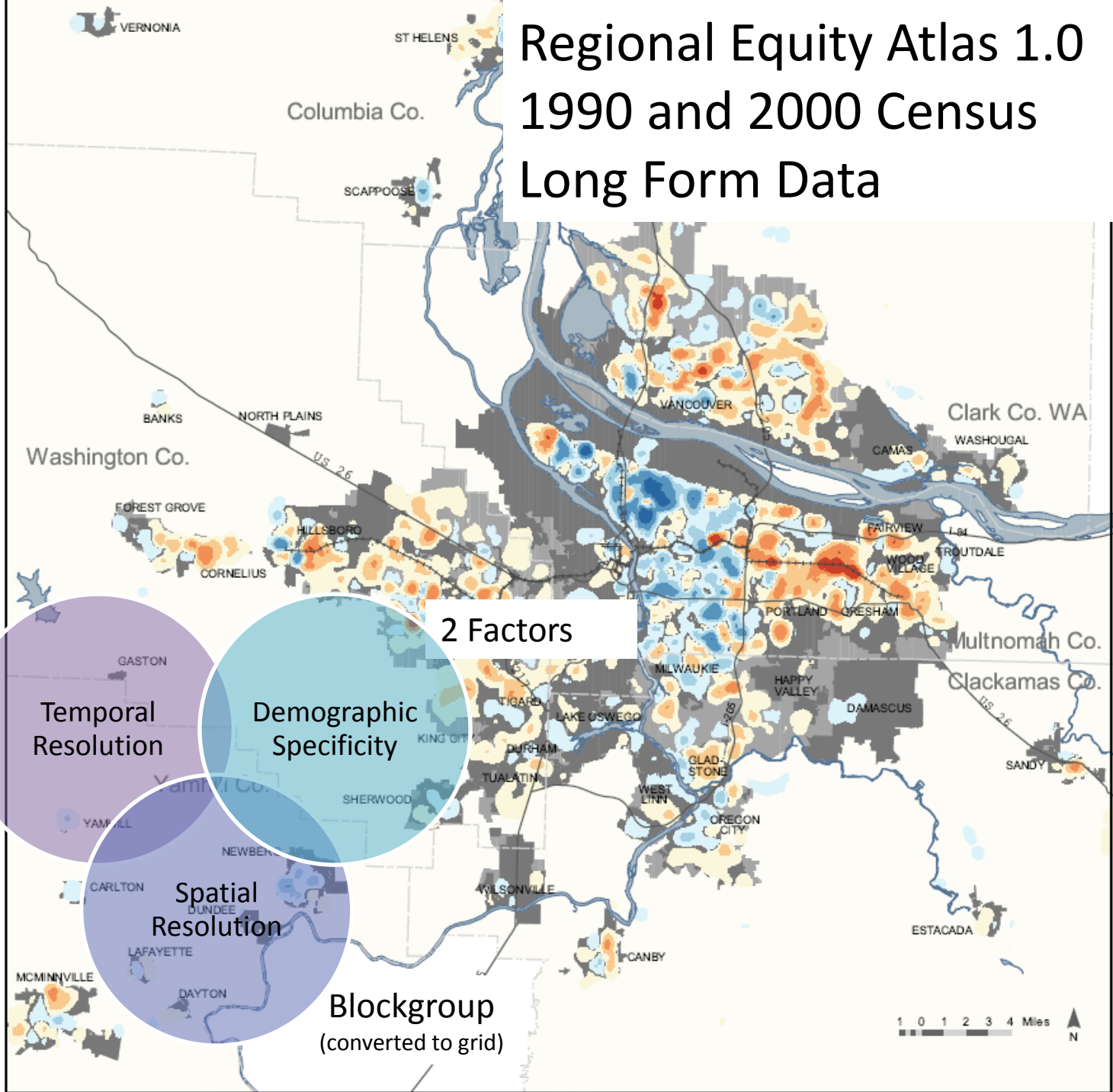
Temporal
Resolution

Demographic
Specificity

Spatial
Resolution

Blockgroup
(converted to grid)

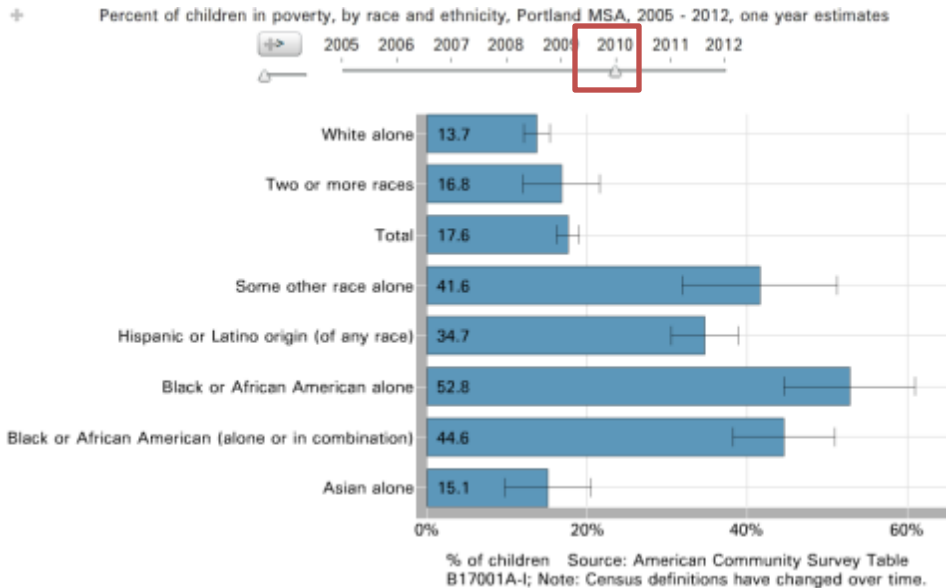
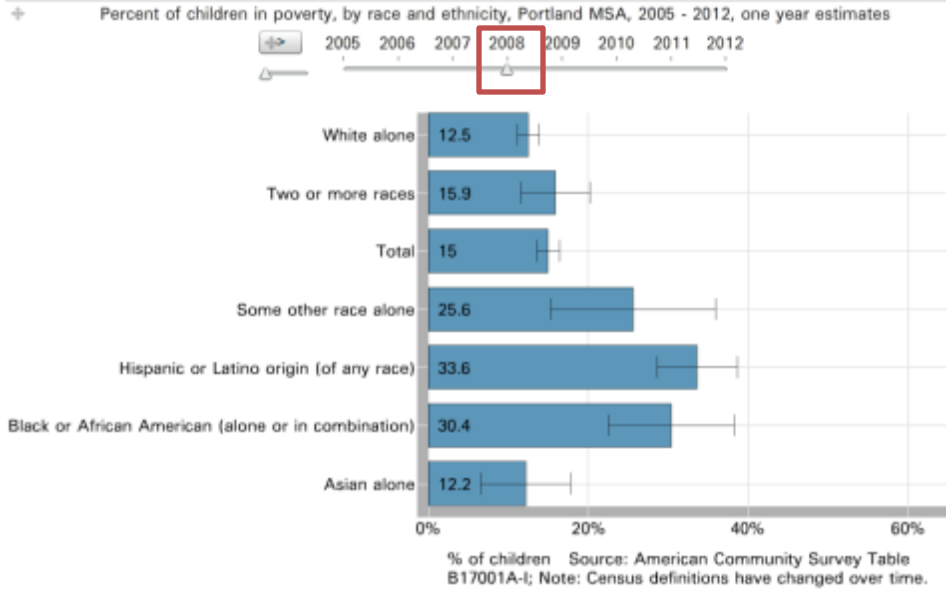
2 Factors



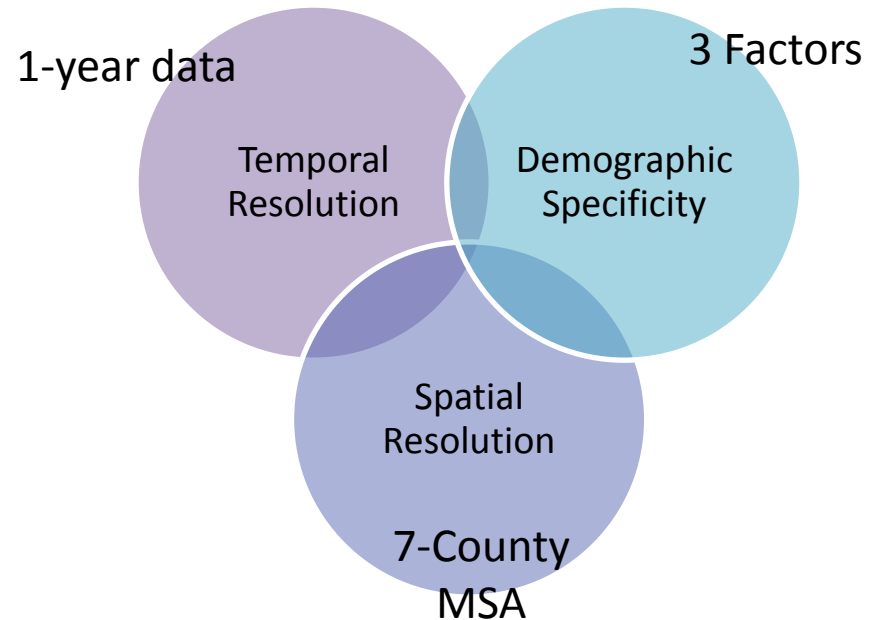
Colors identify locations around which total change in child poverty (<18yo) equals the values stated above; calculations are based on "focal statistics" using a 1/3 mile search radius. Variable based on U.S. Census Bureau STF3 1990 P117 & SF3 2000 PB7 reallocated by block-to-blockgroup ratio of children under 18 for whom poverty status is determined. Average and standard deviation based on data within UGB/A (grey areas) only. Other: ESRI 2002, Metro DRC RUS 2004, Oregon Geospatial.



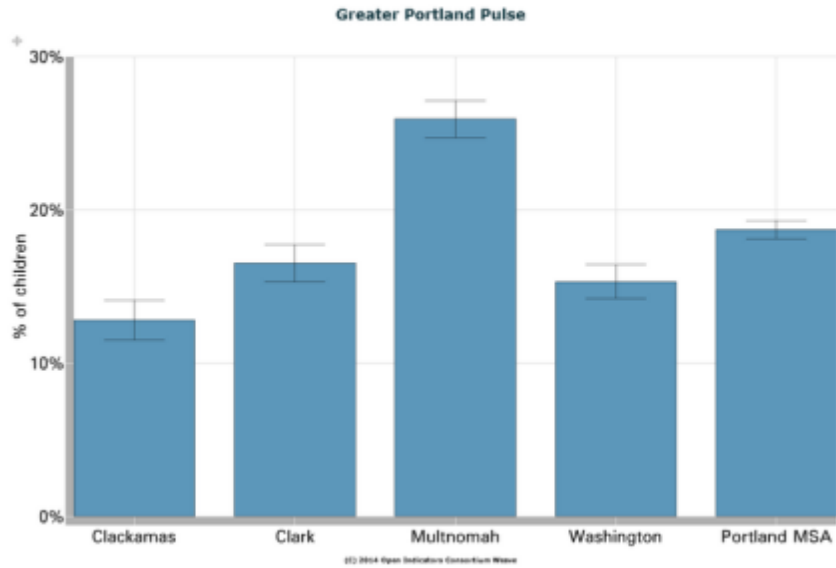
% Children in Poverty by Race & Ethnicity, Portland-Vancouver MSA



Greater Portland Pulse ACS 1-year MSA Data



Percent of children in poverty, Portland MSA, 2009-2012, three year estimates



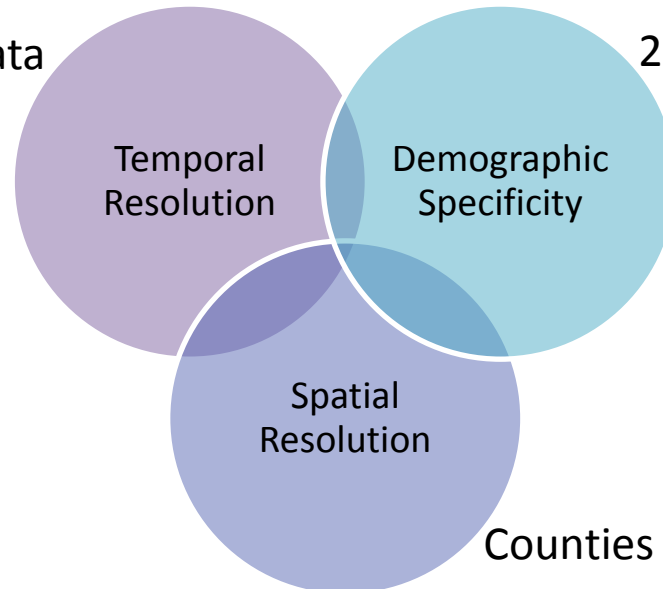
Source: American Community Survey Table B17001

Greater Portland Pulse ACS 3-year County-level Data



3-year data

2 Factors



Counties

Table of Contents

Analysis Units

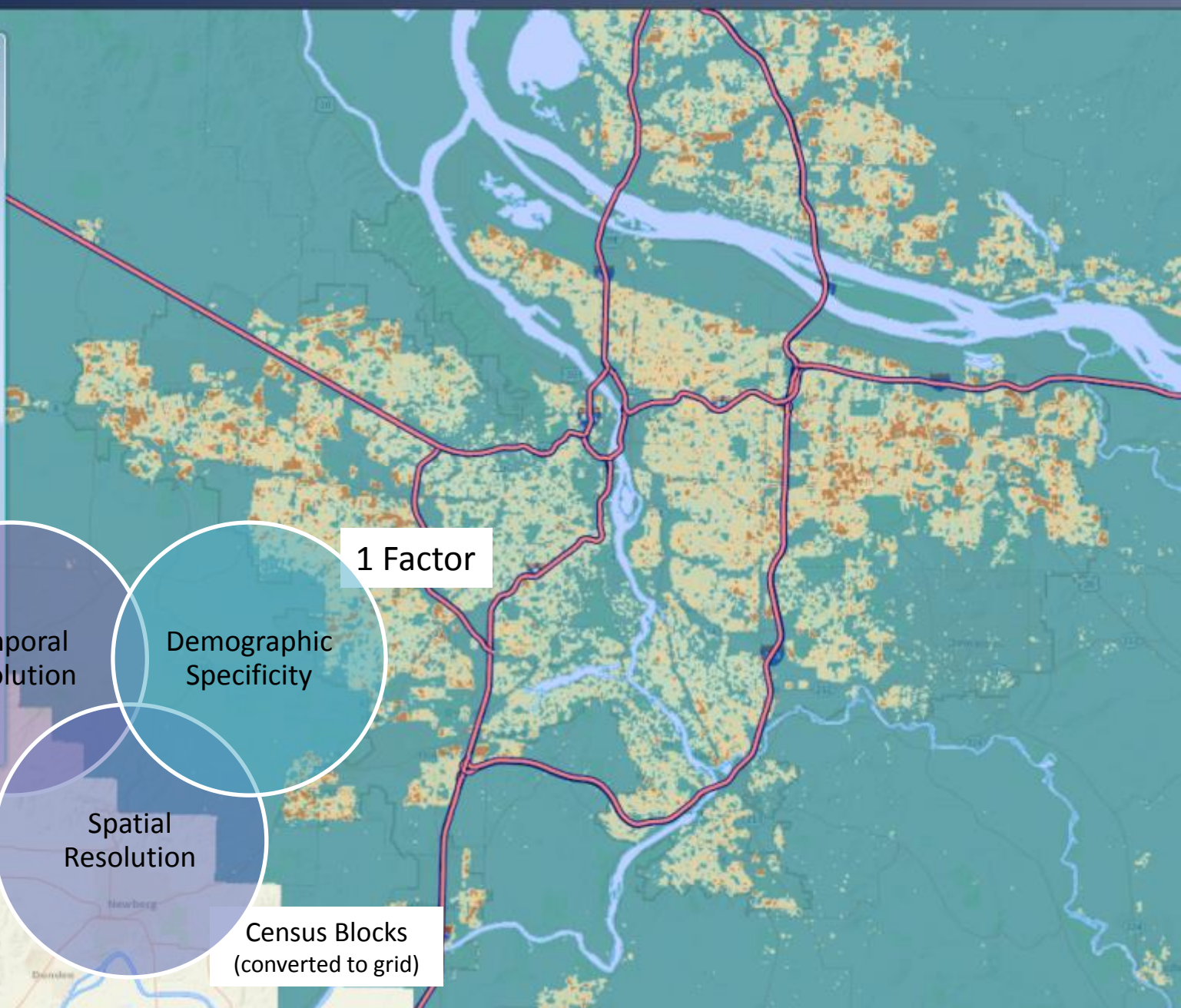
- 2010 Census Tracts

Indicators

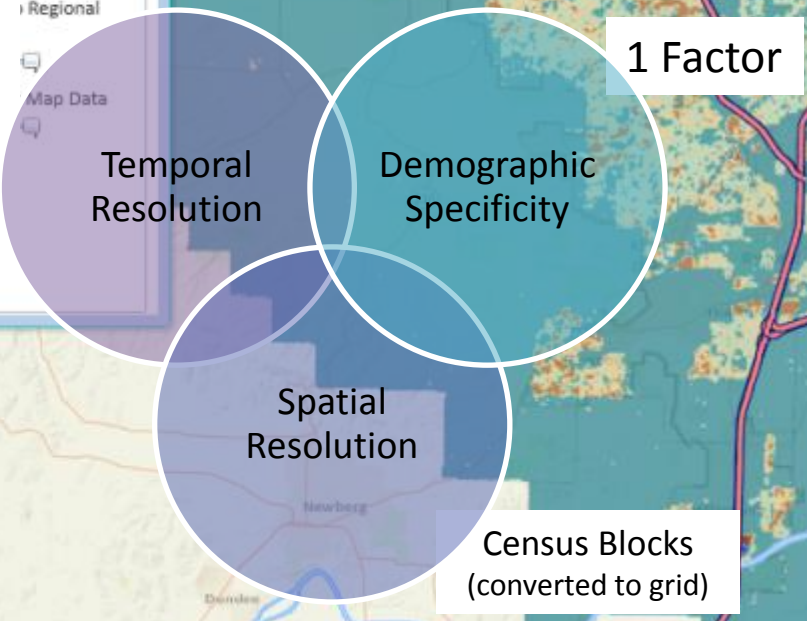
- Age 0-17 (Density by Acre)

Regional

Map Data



10-year data



Yamhill
41
Carlton
Newberg
Dundee

Regional Equity Atlas 2.0

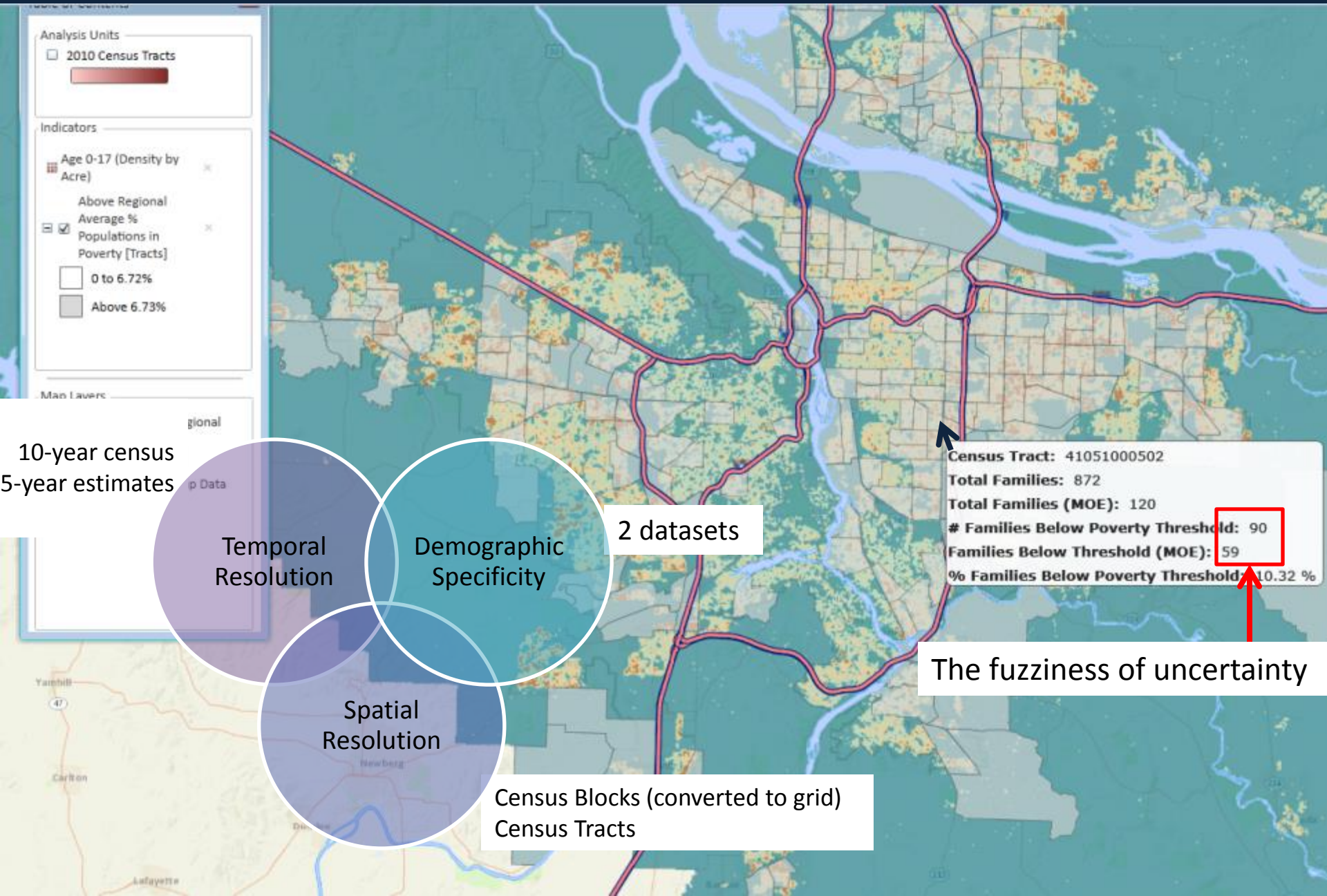


Table of Contents

Analysis Units

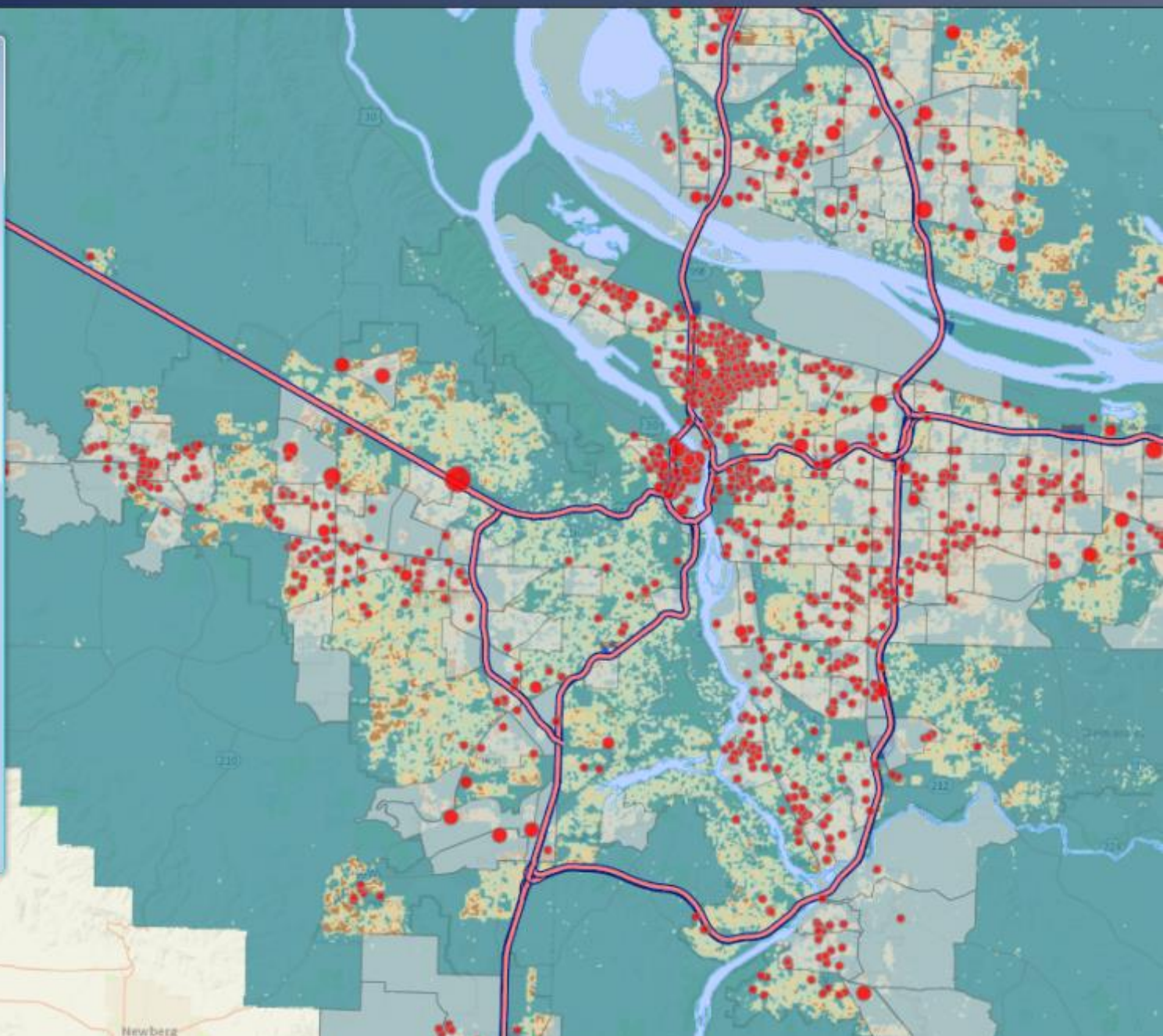
- 2010 Census Tracts

Indicators

- Age 0-17 (Density by Acre)
- Above Regional Average %
- Populations in Poverty [Tracts]
- 0 to 6.72%
- Above 6.73%
- Location of Publicly-Subsidized Affordable Housing [Points]
- 1 - 102
- 103 - 204
- 205 - 305
- 306 - 407
- 408 - 508
- 509 - 610

Map Layers

- Oregon Metro Regional Basemap



Yamhill

47

Newberg

Coalition for a Livable Future - Equity Atlas 2.0

Table of Contents

Analysis Units

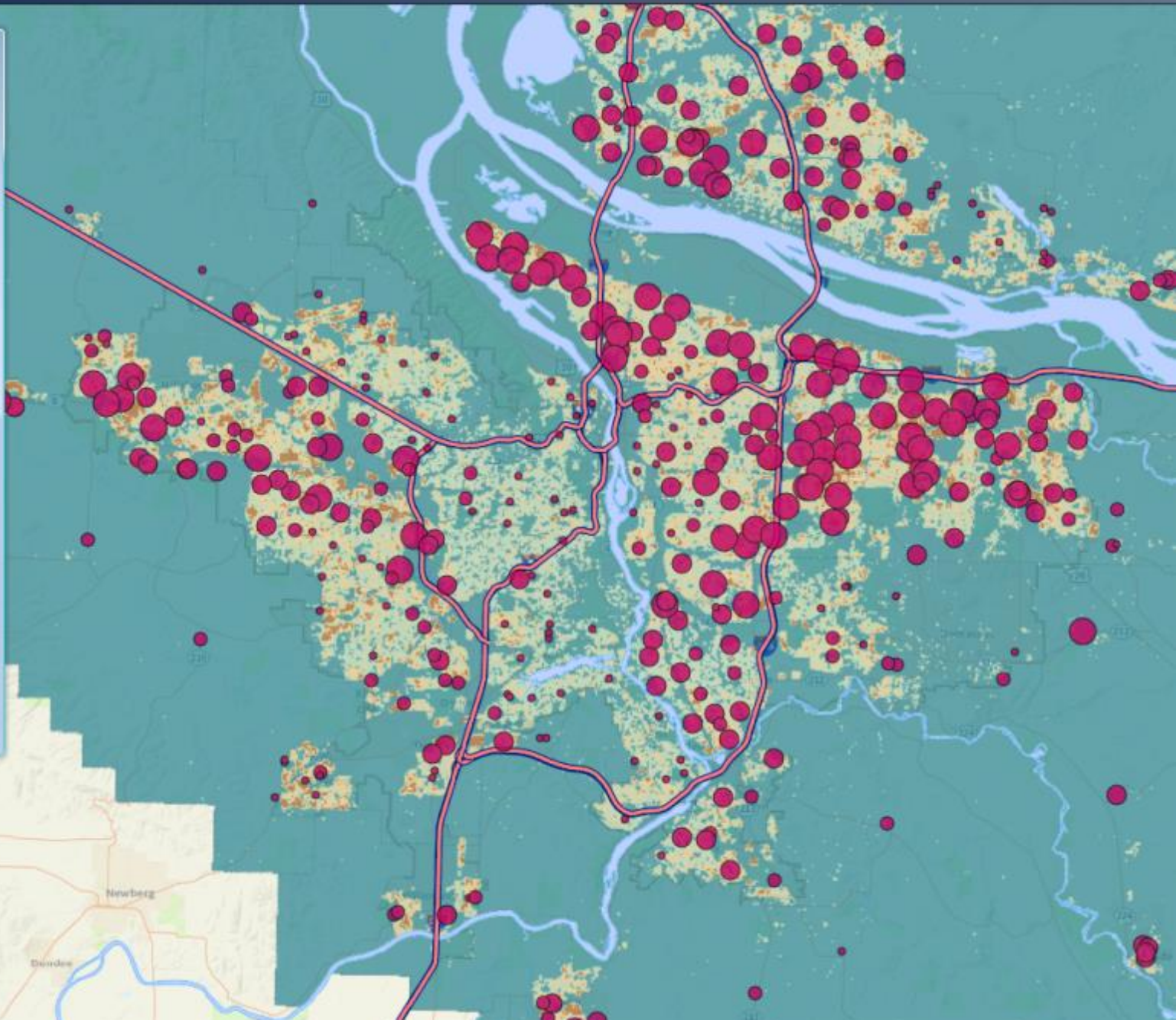
- 2010 Census Tracts

Indicators

- Age 0-17 (Density by Acre)
- Percent Students Eligible for Free or Reduced Price Lunch (by school) [Points]
 - 2 - 30%
 - 31 - 45%
 - 46 - 70%
 - 71 - 95%

Map Layers

- Oregon Metro Regional Basemap
- RLIS Thematic Map Data



Yamhill
47
Carlton

Newberg
Dundee

Table of Contents

Analysis Units

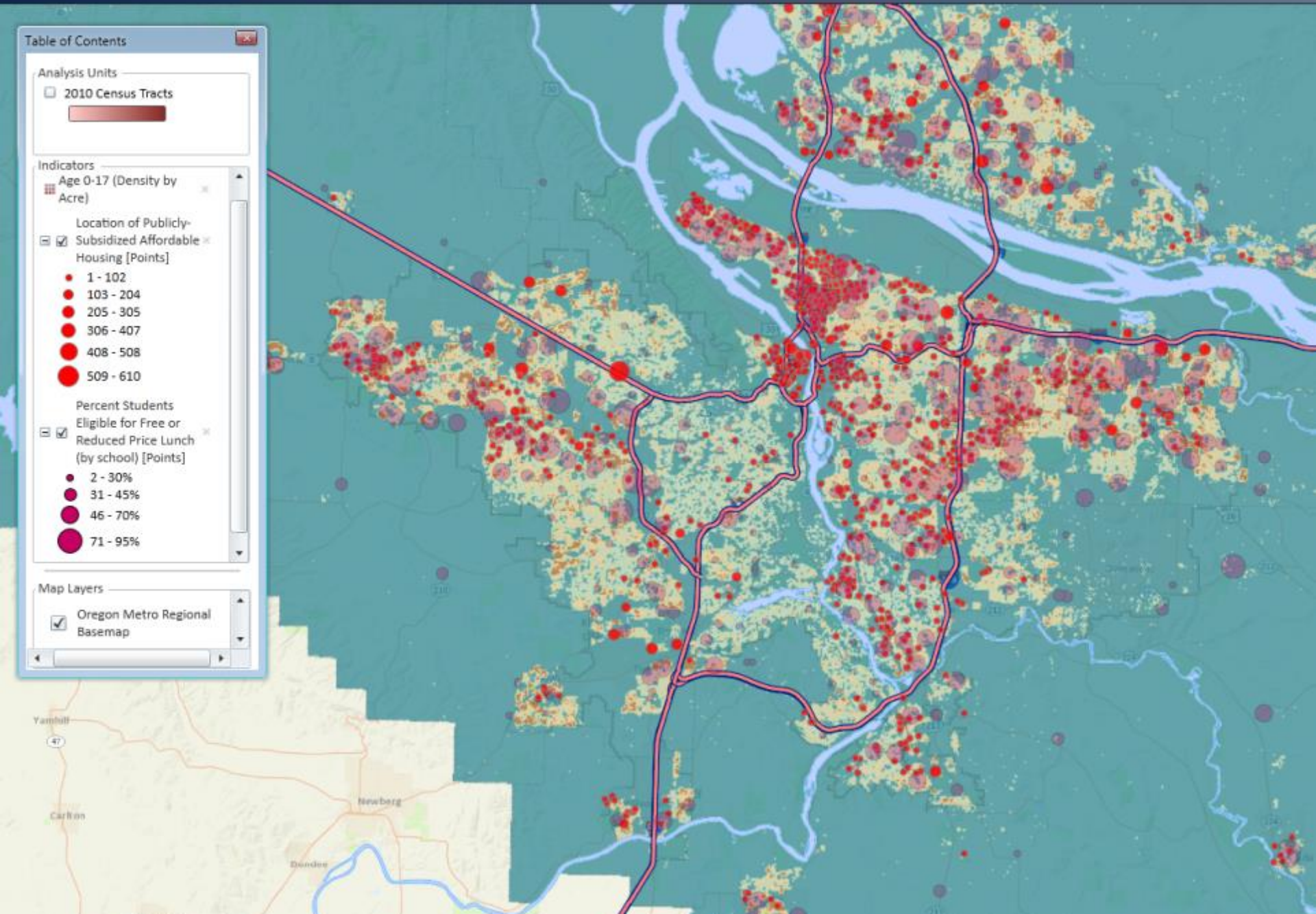
- 2010 Census Tracts

Indicators

- Age 0-17 (Density by Acre)
- Location of Publicly-Subsidized Affordable Housing [Points]
 - 1 - 102
 - 103 - 204
 - 205 - 305
 - 306 - 407
 - 408 - 508
 - 509 - 610
- Percent Students Eligible for Free or Reduced Price Lunch (by school) [Points]
 - 2 - 30%
 - 31 - 45%
 - 46 - 70%
 - 71 - 95%

Map Layers

- Oregon Metro Regional Basemap



Yamhill
47
Carlton

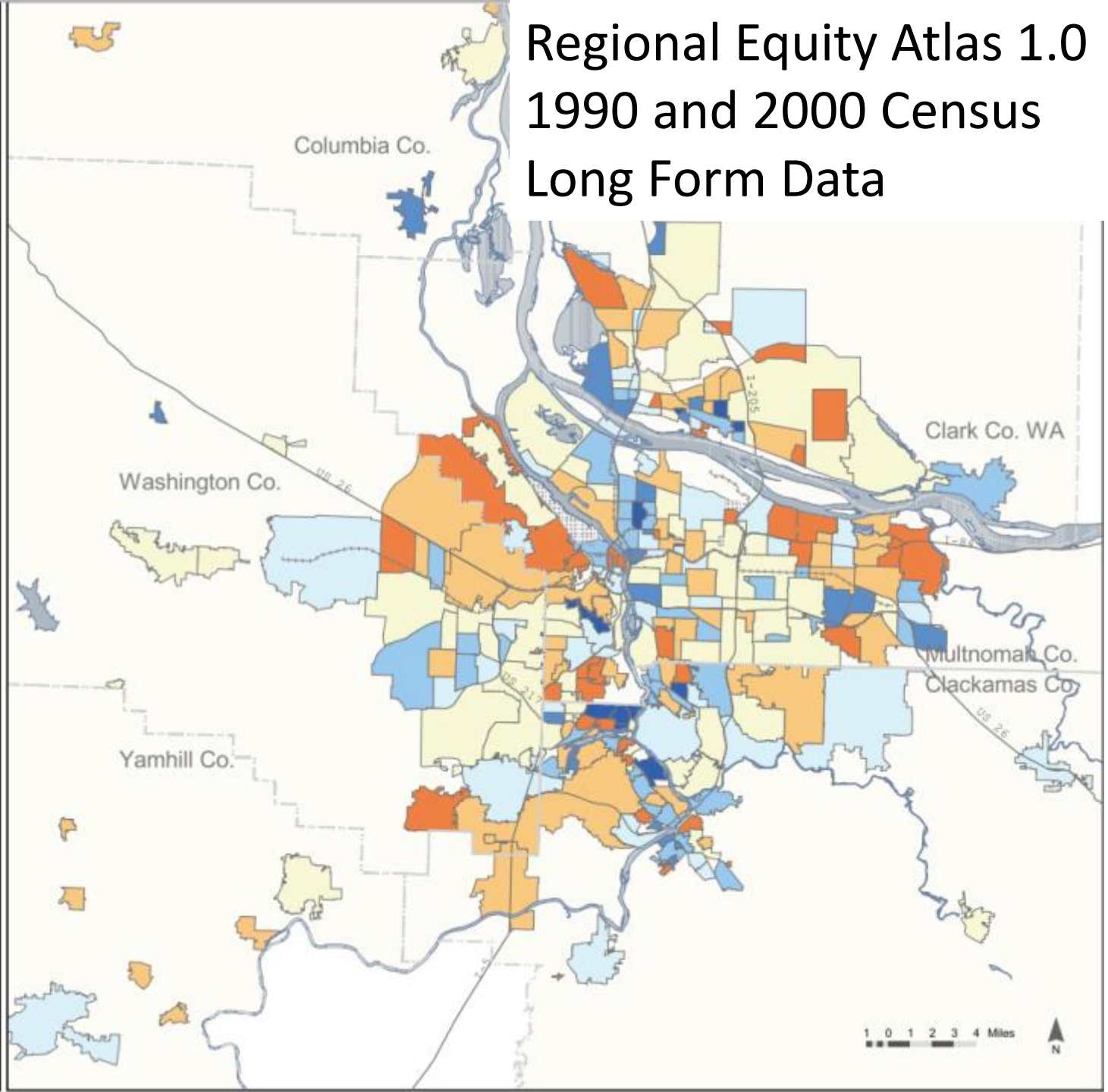
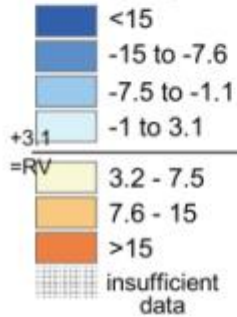
Newberg
Dundee

- Regional Equity Atlas 2.0
- Dealing with Uncertainty:
- Aggregating up
 - Adding other data sources

Change 1990-2000: Cost-burdened Renter Household Rate

by Neighborhood or City
Portland-Vancouver
PMSA (central area)

Percentage-points:



Regional Equity Atlas 1.0 1990 and 2000 Census Long Form Data

* Percentage cost-burdened renter households (spending 30% or more of households income on rent & utilities) in 2000 minus percentage cost-burdened renter-households in 1990. Variable based on U.S. Census Bureau STF3 1990 H51 & SF3 2000 H71 blockgroup data reallocated to blocks by black-to-blackgroup ratio of households & summarized by zones. A few Neighborhoods simplified from original spatial data for clarity, updated city-data. EX: new City of Damascus cuts into Rock Creek Neighborhood, City of Happy Valley has numerous 'holes' or fragments; thus, Happy Valley merged with Rock Creek, Damascus shown in its entirety. Other: Metro RLIS 2005, ESRI 2004.

Cost-Burdened Households:

Renter (percent), 2007-2011 ACS

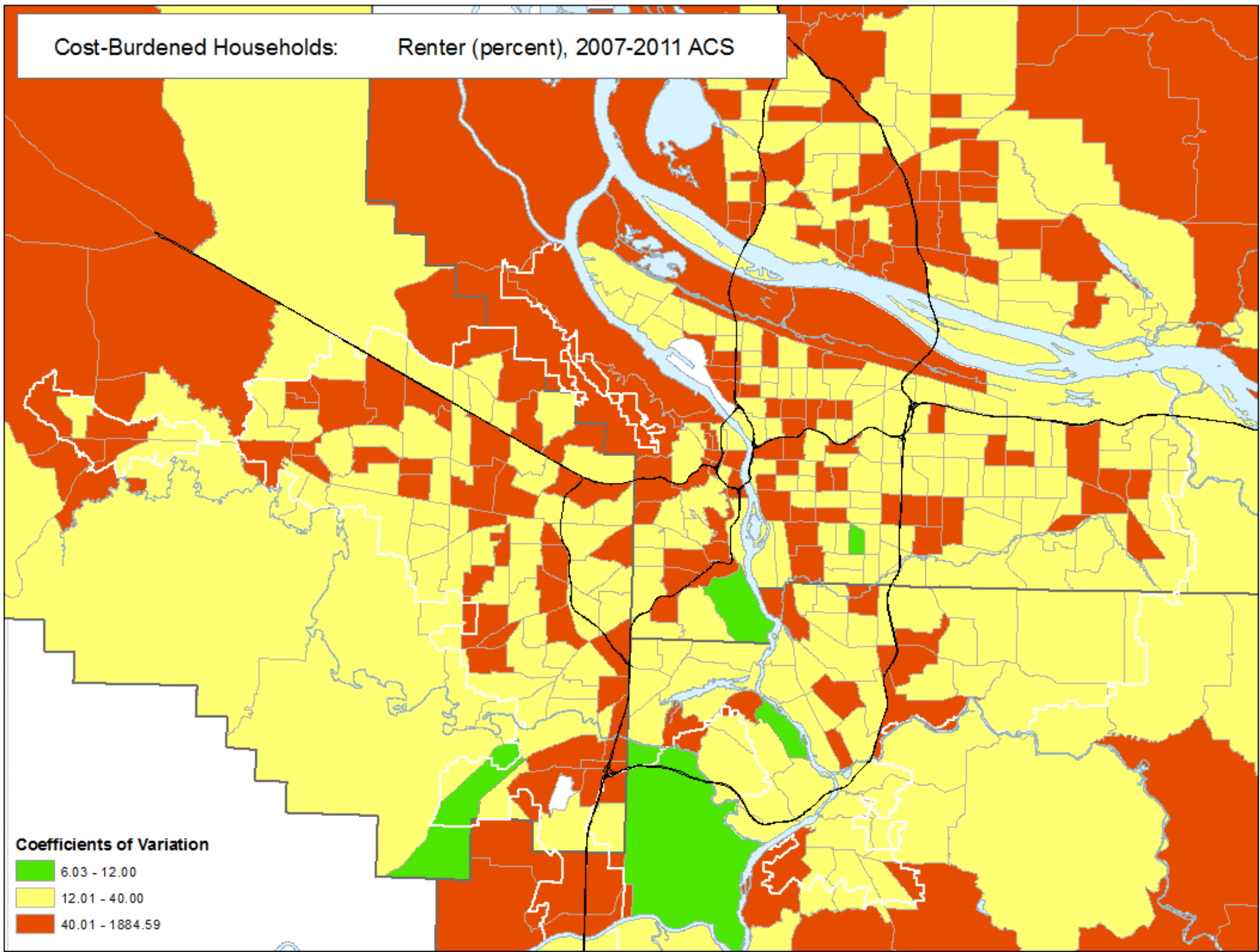


Table of Contents

Analysis Units

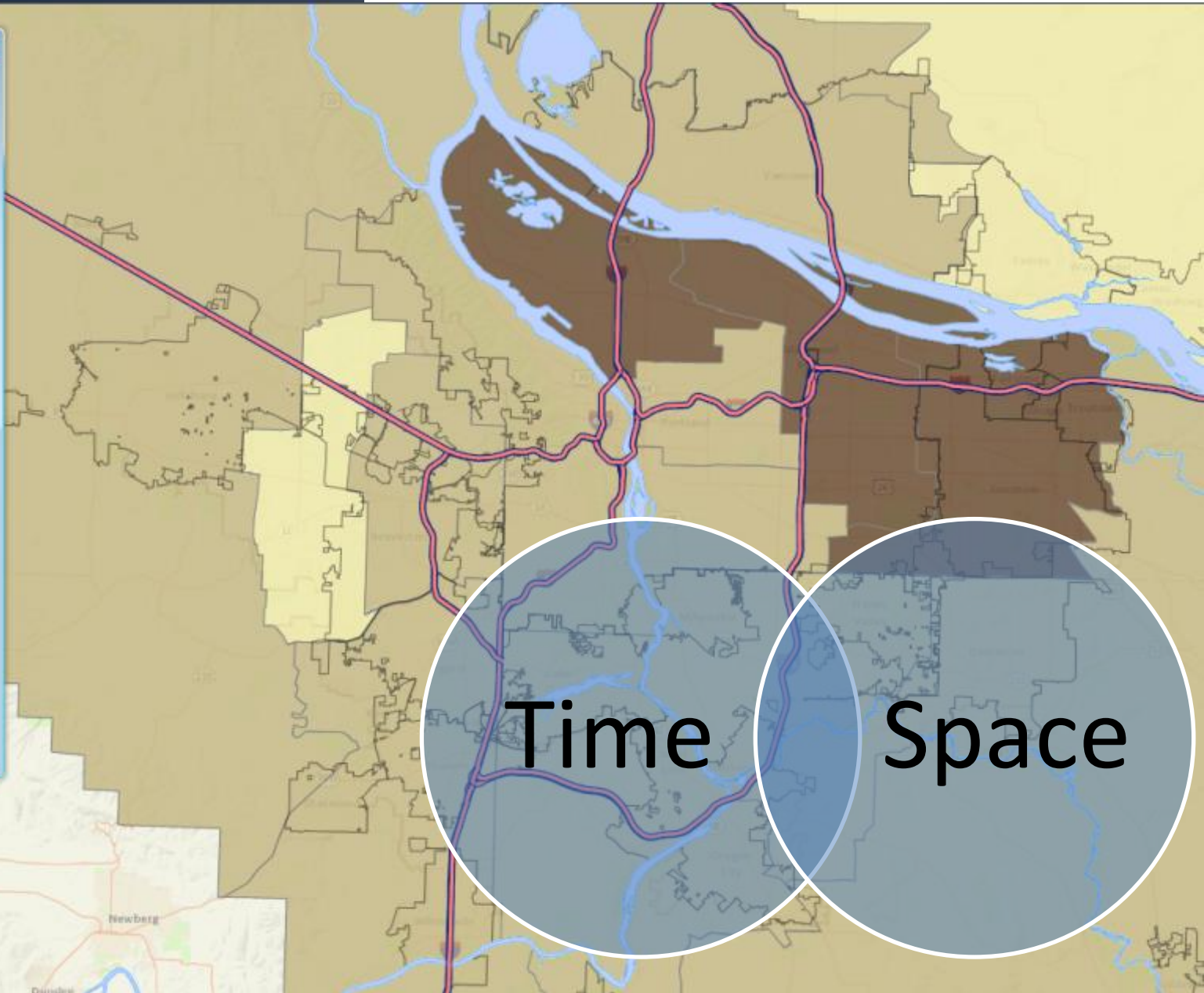
- Cities

Indicators

- Percent Renters Spending over 35% of Income on Housing [PUMA]
- 32% - 35%
- 36% - 43%
- 44% - 52%

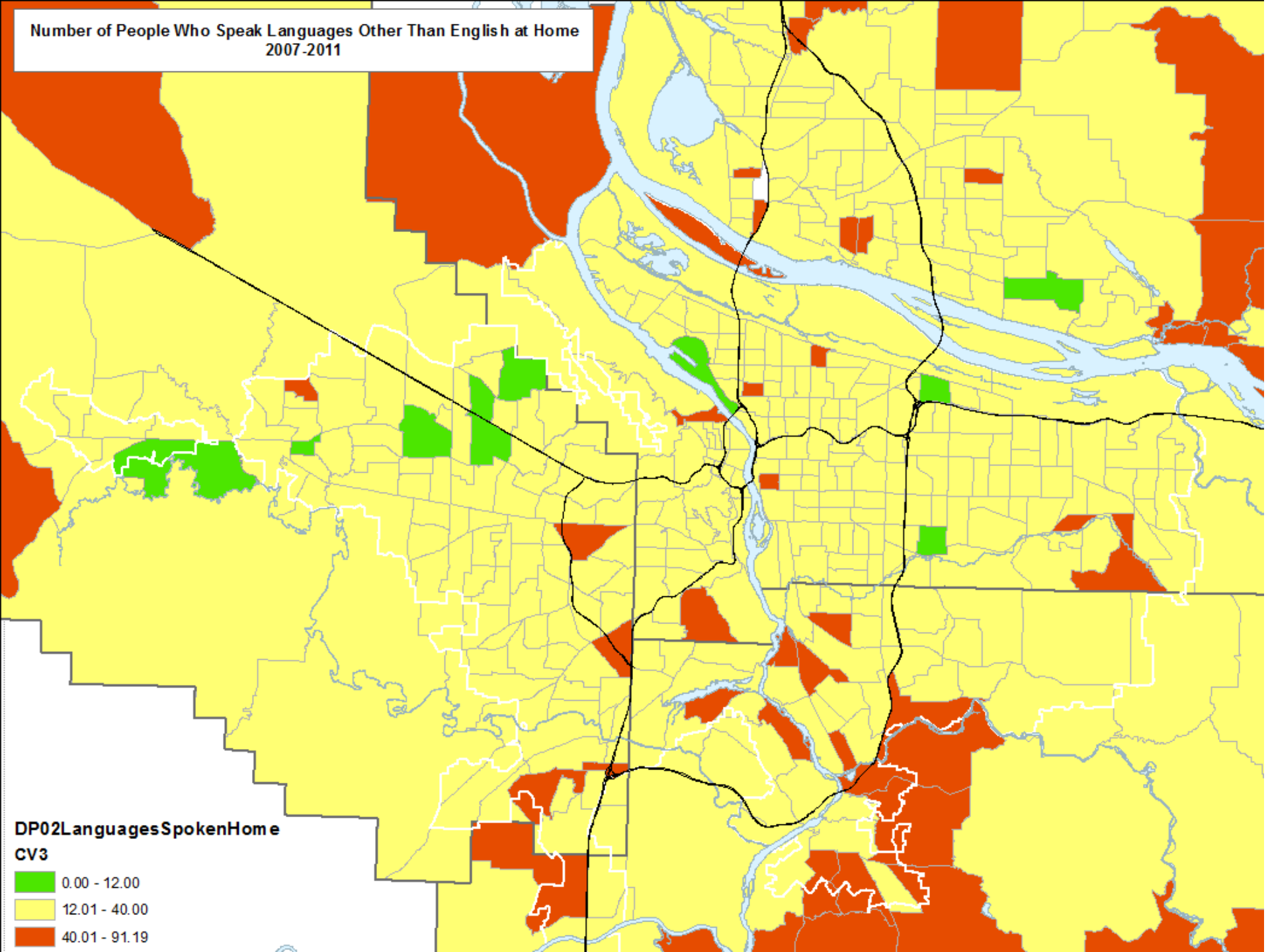
Map Layers

- Oregon Metro Regional Basemap
- Opacity
- RLIS Thematic Map Data
- Opacity



Time Space

Number of People Who Speak Languages Other Than English at Home
2007-2011



DP02LanguagesSpokenHome
CV3

- 0.00 - 12.00
- 12.01 - 40.00
- 40.01 - 91.19

Coalition for a Livable Future - Equity Atlas 2.0

Table of Contents

Analysis Units

- 2010 Census Tracts

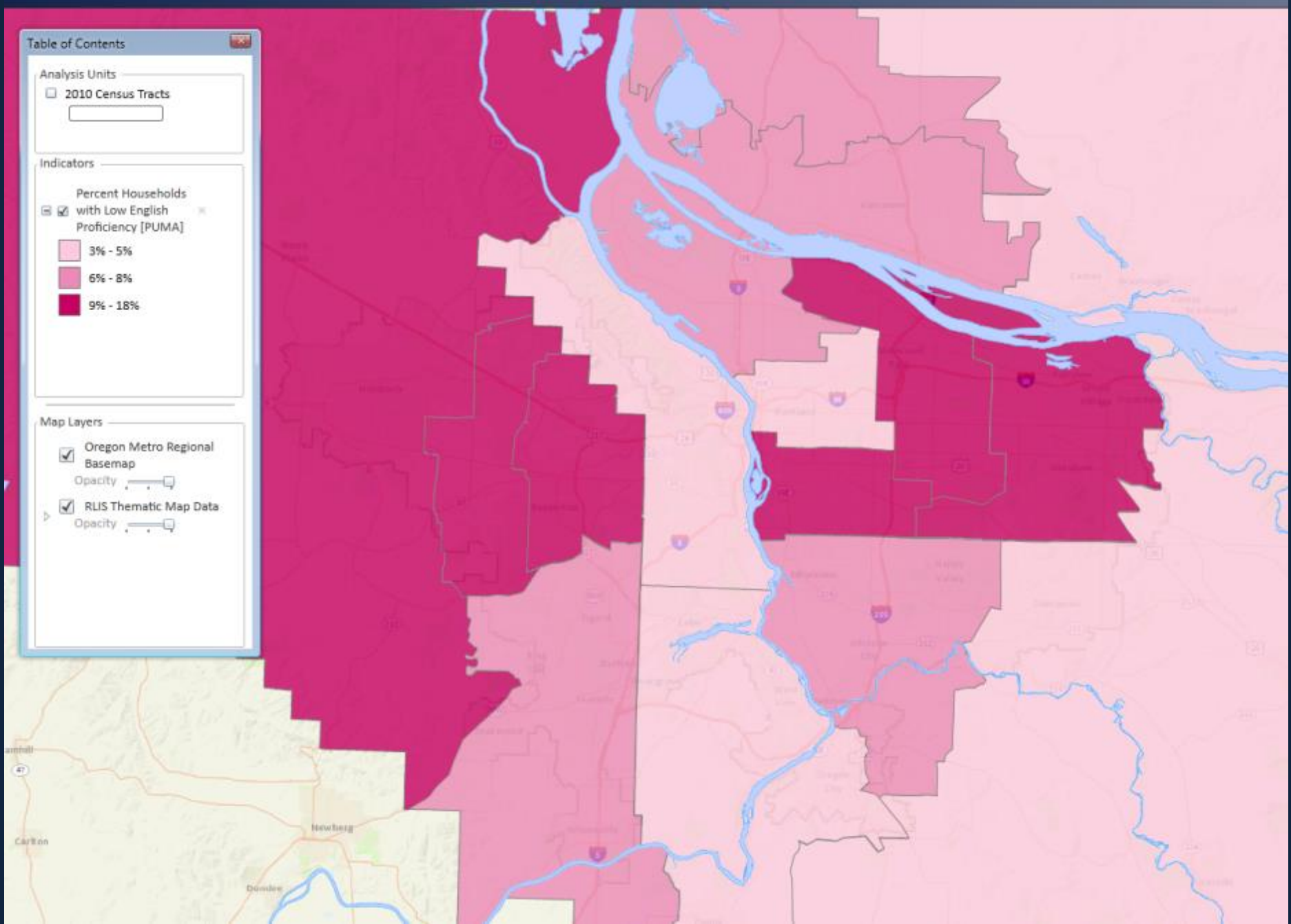
Indicators

- Percent Households with Low English Proficiency [PUMA]

3% - 5%
6% - 8%
9% - 18%

Map Layers

- Oregon Metro Regional Basemap
- RLIS Thematic Map Data



Coalition for a Livable Future - Equity Atlas 2.0

- File
- Export
- Locate
- Options
- Indicators
- Tables and Charts
- Windows
- Help

Table of Contents

Analysis Units

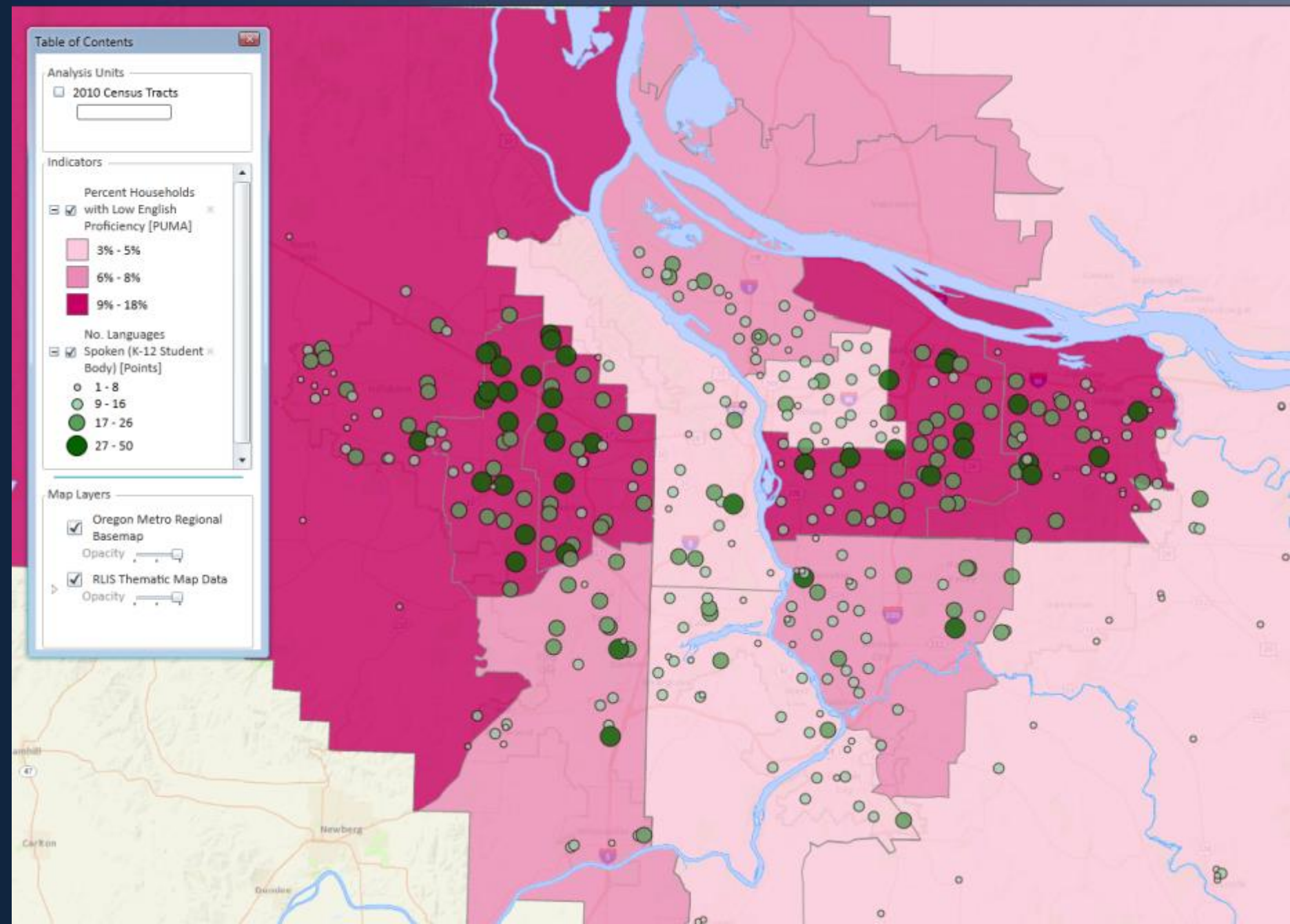
- 2010 Census Tracts

Indicators

- Percent Households with Low English Proficiency [PUMA]
 - 3% - 5%
 - 6% - 8%
 - 9% - 18%
- No. Languages Spoken (K-12 Student Body) [Points]
 - 1 - 8
 - 9 - 16
 - 17 - 26
 - 27 - 50

Map Layers

- Oregon Metro Regional Basemap
 - Opacity
- RLIS Thematic Map Data
 - Opacity



Coalition for a Livable Future - Equity Atlas 2.0

- File
- Export
- Locate
- Options
- Indicators
- Tables and Charts
- Windows
- Help

Table of Contents

Analysis Units

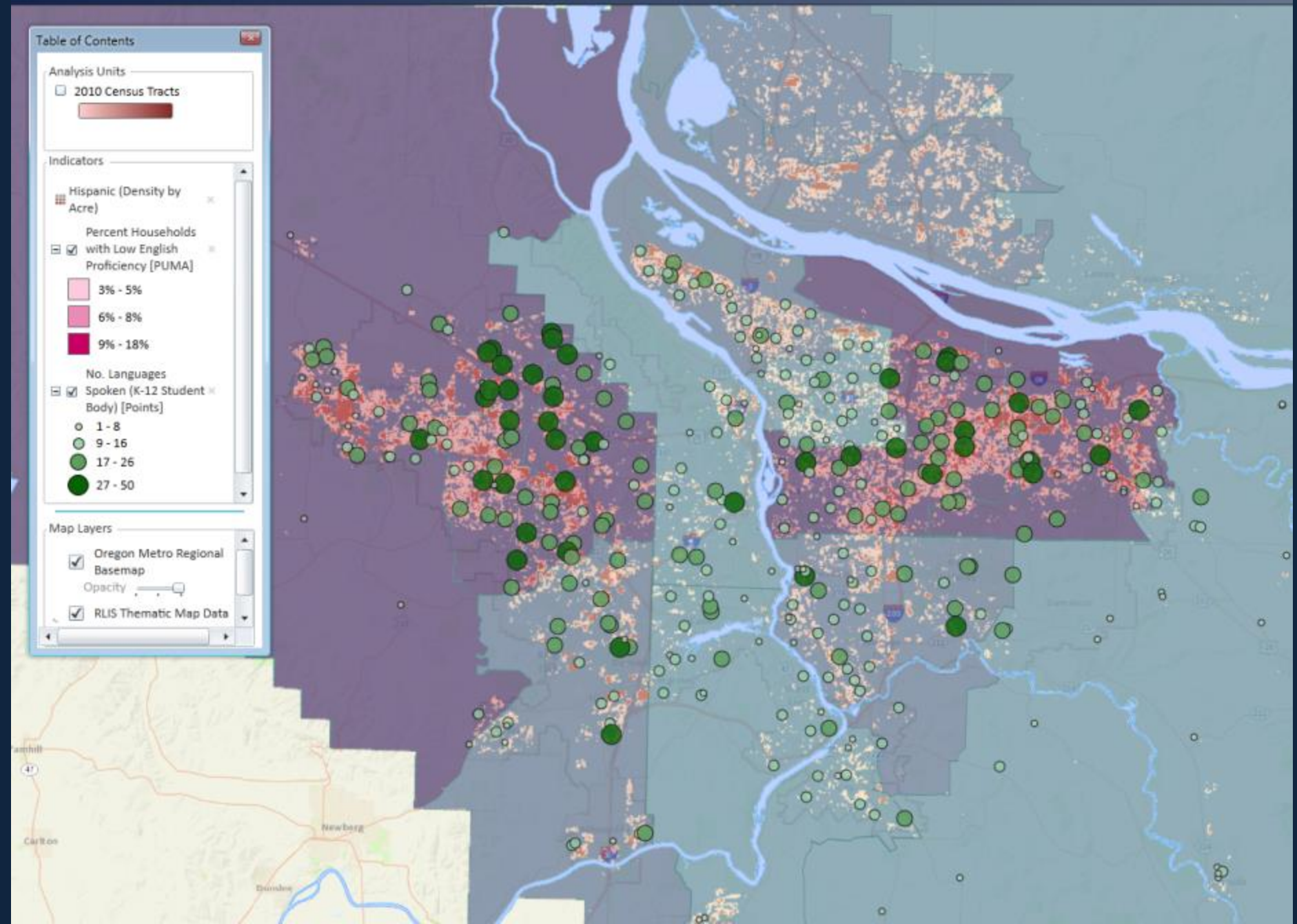
- 2010 Census Tracts

Indicators

- Hispanic (Density by Acre)
- Percent Households with Low English Proficiency [PUMA]
 - 3% - 5%
 - 6% - 8%
 - 9% - 18%
- No. Languages Spoken (K-12 Student Body) [Points]
 - 1 - 8
 - 9 - 16
 - 17 - 26
 - 27 - 50

Map Layers

- Oregon Metro Regional Basemap
- Opacity
- RLIS Thematic Map Data



In our quickly changing world, as local governments are increasingly interested in tracking social equity conditions in ways that allow them to geographically and demographically target and address problems, demographic data (particularly race/ethnicity, income, and age) that are reliable at the neighborhood level (Census tracts) and comparable over time are increasingly important.

Meg Merrick, Ph.D.

Institute of Portland Metropolitan Studies

Portland State University

merrickm@pdx.edu