

---

# Poverty in the United Way Service Area

---

2010 Baseline Report

---

**The Institute for Urban Policy Research  
At The University of Texas at Dallas**

---



# Poverty in the United Way Service Area

---

2010 Baseline Report

## Introduction

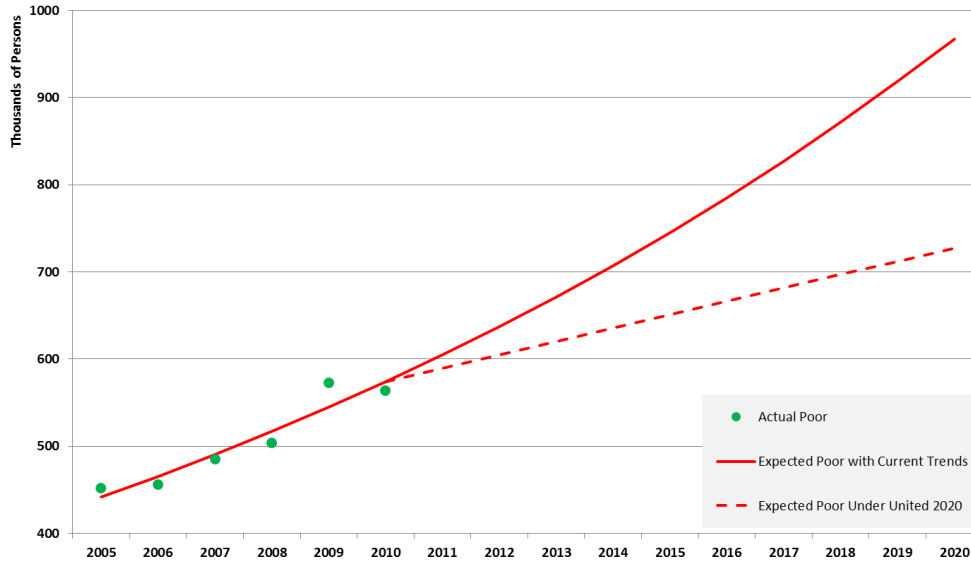
The United Way of Metropolitan Dallas established bold community-wide goals in the areas of Income, Health, and Education. In the area of Income, the United Way has established a goal of reducing the number of persons in poverty by 250,000 by 2020. This report details the specific baseline numbers and percent of persons in poverty in 2010 and establishes a projected number of persons in poverty for the year 2020, against which future progress will be assessed. The report further details the prevalence of poverty across multiple subgroups of the population, such as age, gender, and household type. While some tables are presented in the narrative below, additional tables are included in Appendix 1. The process of developing these estimates and projections is technically complex. Census boundaries do not precisely align with the United Way’s service area, so a discussion of the precise methods used to approximate the appropriate geography is presented in Appendix 2. Because the estimates and projections below are derived from data sources that represent only a sample of the population there is some margin of error around them. Appendix 2 contains a more robust discussion of the process used to generate the margins of error as well as an indicator of the reliability of each estimate.

## A Baseline for 2010 and Projection for 2020

IUPR analysis of the U.S. Census Bureau’s American Community Survey (ACS) indicates there were an estimated **563,874 persons living in poverty in the United Way of Metropolitan Dallas service area** (Dallas, Collin, Rockwall, and southern Denton counties) in 2010. This number represents a 25% increase from the 2005 number of 452,178. Using an estimation process known as negative binomial regression with the aggregate number of poor persons estimated for the years 2005 through 2010 inclusive, the six year pattern was used to project the number of poor persons over the next ten years.

This method projects approximately **967,515 persons living in poverty in the United Way service area in 2020**. Applying similar projection methodology to the aggregate population (regardless of poverty status) yields projected population figures that are consistent with those provided by the Texas State Demographer. Likewise, unpacking the population in poverty by race and ethnicity and then projecting racially and ethnically independent trends yields projections consistent with those obtained by the Texas State Demographer as well. In an additional comparison, trends in the relative prevalence of poverty for race and ethnicity in 2010 were applied to the population changes for each group projected by the Texas State Demographer. Similar numbers were obtained. Figure 1 below depicts these data, with green dots representing the number estimated to be in poverty each year. The solid red line depicts the projected change through 2020 if the current pattern continues, while the broken red line depicts how the trend would appear if the United 2020 goal of moving 250,000 persons out of poverty were fully realized in 2020. Table 1 presents the year by year numbers estimated from the American Community Survey, as well as projected numbers for the following years through 2020.

**Number of Persons Living Below Poverty, 2005 - 2020**  
**United Way of Metropolitan Dallas Service Area Approximation**



Source: Institute for Urban Policy Research Analysis of Public Use Microdata Sample (PUMS) Data for American Community Survey 1 Year Estimates 2005, 2006, 2007, 2008, 2009, 2010.

**Figure 1. Number of Persons Living Below Poverty, 2005-2020**

**Table 1. Number of Persons Living Below Poverty, 2005-2020<sup>1</sup>**

Year	Number of Poor Persons	Number of Poor Persons Expected With No Change to Current Trends	Number of Poor Persons Anticipated if United 2020 Goals Achieved
2005	452,178		
2006	455,562		
2007	484,950		
2008	503,388		
2009	572,508		
2010	563,874		
2011		604,446	589,048
2012		636,879	604,433
2013		671,054	619,819
2014		707,062	635,204
2015		745,002	650,589
2016		784,978	665,974
2017		827,009	681,359
2018		871,480	696,745
2019		918,243	712,130
2020		967,515	727,515

<sup>1</sup> Source: Institute for Urban Policy Research analysis of Public Use Microdata Sample (PUMS) data from the American Community Survey 1 year estimates 2005, 2006, 2007, 2008, 2009, and 2010.

Table 2 presents the numbers estimated to be in poverty from Table 1, along with the percent of population. In addition to the numbers for the persons living in poverty, the percent of households in poverty is presented Table 3. While poverty status is assigned to an individual person, it is determined based upon household income and number and age of household members, and accorded to all members of the household. For this reason, it is appropriate to explore variations in levels of poverty both for individual characteristics and for household characteristics as well. For reference, Table 4 presents the federal poverty threshold for the year 2010. This is the guideline that was employed by the Census Bureau in assigning poverty status to household members.

**Table 2. Number and Percent of Persons by Poverty Status, 2005-2010**

Poverty Status	2005	2006	2007	2008	2009	2010
<b>At or Above Poverty</b>	2,910,063	3,059,956	3,095,304	3,165,426	3,189,065	3,113,406
	86.55	87.04	86.45	86.28	84.78	84.67
<b>Below Poverty</b>	452,178	455,562	484,950	503,388	572,508	563,874
	13.45	12.96	13.55	13.72	15.22	15.33

**Table 3. Number and Percent of Households by Poverty Status, 2005-2010**

Poverty	2005	2006	2007	2008	2009	2010
<b>At or Above Poverty</b>	1,067,873	1,118,777	1,135,644	1,167,055	1,161,904	1,188,164
	89.95	89.85	89.99	89.55	88.9	88.93
<b>Below Poverty</b>	119,281	126,351	126,351	136,148	145,036	147,864
	10.05	10.15	10.01	10.45	11.1	11.07

**Table 4. Federal Poverty Threshold by Size of Family Unit and Number of Children Under Age 18, 2010**

Household Income	Number of Related Children Under 18 Years								
	0	1	2	3	4	5	6	7	8 or More
<b>One Person</b>									
Under 65	11,344								
65 and Up	10,458								
<b>Two People</b>									
HH Under 65	14,602	15,030							
HH 65 and Up	13,180	14,973							
<b>Three or More People</b>									
Three people	17,057	17,552	17,568						
Four people	22,491	22,859	22,113	22,190					
Five people	27,123	27,518	26,675	26,023	25,625				
Six people	31,197	31,320	30,675	30,056	29,137	28,591			
Seven people	35,896	36,120	35,347	34,809	33,805	32,635	31,351		
Eight people	40,146	40,501	39,772	39,133	38,227	37,076	35,879	35,575	
Nine people or more	48,293	48,527	47,882	47,340	46,451	45,227	44,120	43,845	42,156

## Poverty Baseline for Demographic Segments

Table 5 presents the variation in the number and percent of persons by poverty status and race / ethnicity. In 2010, while 15% of the United Way service area lived below the poverty line, almost 25% of Hispanic residents, and almost 24% of non-Hispanic African-American residents lived below the poverty line. By comparison, just fewer than 7% of non-Hispanic white residents and 8% of non-Hispanic Asian residents lived below the poverty line. Thus, just under one half of the 563,874 residents living under the poverty line were Hispanic.

**Table 5. Number and Percent of Persons in Poverty by Race / Ethnicity, 2010**

Race / Ethnicity	At or Above		Total
	Poverty	Below Poverty	
<b>Non-Hispanic White</b>	1,515,338 93.20	110,553 6.80	<b>1,625,891</b>
<b>Non-Hispanic Black</b>	467,459 76.02	147,472 23.98	<b>614,931</b>
<b>Non-Hispanic Asian</b>	212,770 91.68	19,306 8.32	<b>232,076</b>
<b>Non-Hispanic Other</b>	72,939 86.22	11,656 13.78	<b>84,595</b>
<b>Hispanic</b>	844,900 75.45	274,887 24.55	<b>1,119,787</b>
<b>Total</b>	<b>3,113,406</b> <b>84.67</b>	<b>563,874</b> <b>15.33</b>	<b>3,677,280</b>

Similarly, Table 6 presents the variation in number and percent of persons in poverty by age group. In the United Way service area in 2010, one in four children under age 5 were living under the poverty line, while one in five children between the ages of 5 and 17 were living in poverty. Table 7 presents the variation in number and percent of persons in poverty by sex. Women were more likely than men to be living in poverty by a narrow margin of 16% to 14%.

**Table 6. Number and Percent of Persons in Poverty by Age Group, 2010**

Age Group	At or Above		Total
	Poverty	Below Poverty	
<b>Under 5</b>	215,936 74.68	73,214 25.32	<b>289,150</b>
<b>5 to 17</b>	577,142 78.04	162,387 21.96	<b>739,529</b>
<b>18 to 64</b>	2,032,503 87.01	303,326 12.99	<b>2,335,829</b>
<b>65 and Up</b>	287,825 92.02	24,947 7.98	<b>312,772</b>
<b>Total</b>	<b>3,113,406</b> <b>84.67</b>	<b>563,874</b> <b>15.33</b>	<b>3,677,280</b>

**Table 7. Number and Percent of Persons in Poverty by Sex, 2010**

Sex	At or Above		Total
	Poverty	Below Poverty	
<b>Male</b>	1,561,168 85.95	255,112 14.05	<b>1,816,280</b>
<b>Female</b>	1,552,238 83.41	308,762 16.59	<b>1,861,000</b>
<b>Total</b>	<b>3,113,406</b> <b>84.67</b>	<b>563,874</b> <b>15.33</b>	<b>3,677,280</b>

For more in-depth inspection, Table 14 (presented in Appendix 1) details variations in poverty across categories of race / ethnicity, age, and sex. For each cell presented in the table, four pieces of information are provided. First, the table provides the total number of persons estimated to be in that subgroup of the population. Take, for instance, non-Hispanic white males under the age of five. The first number indicates that, in the United Way service area, there are an estimated 43,656 non-Hispanic white males under the age of five. The second number indicates that 9.6% of them are estimated to be living in poverty, which translates to 4,178 (as indicated on the third line). Finally, the last number indicates the median percent of poverty for those living in the category. In this case it is estimated that one half of non-Hispanic white males under the age of five live at or below 404% of the federal poverty threshold.

While Table 5 through Table 7 illustrate simple variation across independent categories of race / ethnicity, age, and sex, Table 14 table allows one to dig more specifically into the nuanced trends at the intersection of these categories. For instance, at the margin, one in four children in the United Way service area under the age of five is estimated to be living below poverty. That number is 38% for non-Hispanic African-American children under five, and 35% for Hispanic children under five. Other differences are evident from careful analysis of this table as well. The chief value of analyses of these differences is to permit a more precise targeting of resources and programs to those persons most affected by poverty. For instance, at the margin women are slightly more likely than men to be living under poverty. However, among certain age groups and racial / ethnic groups, that difference is much starker. Among those aged 65 and up, Hispanic men are slightly more likely than Hispanic women to be living in poverty, though among those aged 18 to 24, Hispanic women had an eight percentage point margin over Hispanic men. The last line for each cell in the table presents the median percent of poverty, in other words the percent of poverty below which 50% of the group lives. By that measure, the group experiencing the most severe poverty would be Hispanic children under the age of five, where 50% of the children live at or below 133% of the poverty level. With rates only slightly better, non-Hispanic African-American children under the age of five have a median percent of poverty at 133%. While Hispanic and non-Hispanic African-American children between the ages of 5 to 17 fared slightly better than their younger counterparts (141% and 171% of poverty, respectively), no other group experiences median poverty percentages below 200%, save for African-American females aged 65 and up at 174%.

One should be certain to refer to the information on reliability for this table presented in Appendix 2, as the partitioning of the sample into so many categories impacts the reliability of several of the estimated totals and percentages. While only a few fell into the low reliability status, a number fell into the medium reliability status. Again, as these are estimates derived from census data, the precision of the

differences in percentage points is not as important as merely noting the areas where divergences from the margin exist.

Table 8 presents the variation in number and percent of persons living in poverty by household type. Consistent with studies in other cities and at the national level, those residing in households headed by females with no husband present show the greatest level of poverty, with one third of those persons living below the poverty line (212,487 persons). Care should be taken in interpreting the categories of this table, however, as a female-headed, no husband household is not necessarily headed by a single female adult. This category includes households which may have one or more adults, but for which the female householder does not report being married to a male. The same is true for the category of male headed households, no wife.

**Table 8. Number and Percent of Persons in Poverty by Household Type, 2010**

Household Type	At or Above		Total
	Poverty	Below Poverty	
<b>Married Couple</b>	2,032,011 90.38	216,314 9.62	<b>2,248,325</b>
<b>Male-Headed, No Wife</b>	189,845 80.64	45,589 19.36	<b>235,434</b>
<b>Female-Headed, No Husband</b>	424,371 66.64	212,487 33.36	<b>636,858</b>
<b>Male-Headed, Non-Family</b>	221,755 84	42,254 16	<b>264,009</b>
<b>Female-Headed, Non-Family</b>	206,882 82.35	44,347 17.65	<b>251,229</b>
<b>Total</b>	<b>3,074,864</b> 84.57	<b>560,991</b> 15.43	<b>3,635,855</b>

**Table 9. Number and Percent of Households in Poverty by Household Type, 2010**

Household Type	At or Above		Total
	Poverty	Below Poverty	
<b>Married Couple</b>	634,179 94.05	40,097 5.95	<b>674,276</b>
<b>Male-Headed, No Wife</b>	47,874 85.56	8,080 14.44	<b>55,954</b>
<b>Female-Headed, No Husband</b>	119,483 73.62	42,824 26.38	<b>162,307</b>
<b>Male-Headed, Non-Family</b>	157,863 87.51	22,523 12.49	<b>180,386</b>
<b>Female-Headed, Non-Family</b>	189,072 85.75	31,411 14.25	<b>220,483</b>
<b>Total</b>	<b>1,148,471</b> 88.79	<b>144,935</b> 11.21	<b>1,293,406</b>

Table 9 presents a similar distribution, instead providing the number and percent of households in poverty by household type. The pattern is similar, though not as striking. In 2010, the average household living at or above poverty had just over 3.5 people, while the average household living below poverty had just over 4.1. Thus, when exploring poverty among households, the patterns often seen at the population level are compressed.

Table 15 (presented in Appendix 1) explores the variation in poverty across categories of race / ethnicity and household type. At the margin, Hispanics experience higher relative proportions in poverty than other racial / ethnic groups, with non-Hispanic African Americans close behind (25% and 24%, respectively). Across the categories of household type, the gap between Hispanic and non-Hispanic African-American poverty rates is similar to the margin, with the exception of the poverty rate among married couple families. While non-Hispanic African-American persons living in married couple families experience a poverty rate of 9.8%, Hispanic persons living in married couple families experience a poverty rate just over twice that, at 20.3%. Moreover, in every type of household Hispanic persons have the lowest median percent of poverty. Among those living in female-headed, nonfamily households, 50% live at or below 181% of the poverty line, and among those living in female-headed, no husband present households, 50% live at or below 116% of the poverty line. While Hispanic persons living in married couple households have the highest median percent of poverty among Hispanics, they don't experience the same lift seen by other racial / ethnic groups. For instance, comparing female-headed, no husband present households to married couple households, for every other racial / ethnic group married couple households have a median percent of poverty that is around double that of the female-headed households, all in excess of 300% of poverty. Among Hispanics, that same comparison results in only a 150% increase, and even then to a level under that required for many federal assistance programs.

Table 10 and Table 11 explore variation in the number and percent of persons and households in poverty by housing structure type. Persons and households living in mobile homes and small apartment complexes (fewer than 10 units) showed the highest percentages living in poverty (28% and 32% of persons, respectively). While the percentage of others living in poverty is high, the estimate has a low reliability due to the small number of persons and households in that category.



Table 10. Number and Percent of Persons in Poverty by Housing Structure Type, 2010

Structure Type	At or Above		Total
	Poverty	Below Poverty	
Mobile Home / Trailer	71,892 71.76	28,291 28.24	<b>100,183</b>
Single Family - Detached	2,277,644 89.77	259,463 10.23	<b>2,537,107</b>
Single Family - Attached	87,111 81	20,431 19	<b>107,542</b>
Apartments - Less than 10	232,983 67.97	109,789 32.03	<b>342,772</b>
Apartments - 10 to 49	287,853 72.14	111,161 27.86	<b>399,014</b>
Apartments - 50 or More	116,850 78.76	31,509 21.24	<b>148,359</b>
Other	531 60.48	347 39.52	<b>878</b>
<b>Total</b>	<b>3,074,864</b> <b>84.57</b>	<b>560,991</b> <b>15.43</b>	<b>3,635,855</b>

Table 11. Number and Percent of Households in Poverty by Housing Structure Type, 2010

Structure Type	At or Above		Total
	Poverty	Below Poverty	
Mobile Home / Trailer	21,210 78.36	5,858 21.64	<b>27,068</b>
Single Family - Detached	820,827 92.67	64,943 7.33	<b>885,770</b>
Single Family - Attached	44,844 89.7	5,151 10.3	<b>49,995</b>
Apartments - Less than 10	88,072 76.96	26,361 23.04	<b>114,433</b>
Apartments - 10 to 49	99,485 78.93	26,563 21.07	<b>126,048</b>
Apartments - 50 or More	73,427 82.15	15,958 17.85	<b>89,385</b>
Other	606 85.71	101 14.29	<b>707</b>
<b>Total</b>	<b>1,148,471</b> <b>88.79</b>	<b>144,935</b> <b>11.21</b>	<b>1,293,406</b>

Table 12 presents the variation in poverty rates across levels of educational attainment for the population age 25 and up at the margin, while Table 17 (in Appendix 1) presents variation in poverty across categories of both race / ethnicity and educational attainment. At the high end of education, persons whose highest level of educational attainment was a graduate degree had the lowest percent

living in poverty within each of the racial / ethnic categories, and with the exception of non-Hispanic African-Americans, all had median percent of poverty levels over 500% (the highest level recorded by the census). As levels of education decrease, there is less similarity among both the percent poor and the median percent of poverty. Among those with less than a high school education, non-Hispanic African-Americans had a median percent of poverty at 120%, Hispanics at 134%, and non-Hispanic whites at 241%. In translation, of the 12,322 persons who were non-Hispanic white with less than a high school education, 50% lived at or below 241% of poverty. Of the 135,199 persons who were Hispanic with less than a high school education 50% lived at or below 134% of poverty. Again, the difference in the size of the population and nature of the assets needed at the table suggest that variation in strategies will be required.

**Table 12. Number and Percent of Persons in Poverty by Educational Attainment for the Population Age 25 and Up, 2010**

Educational Attainment	At or Above		Total
	Poverty	Below Poverty	
<b>No Formal Education</b>	117,485 71.78	46,199 28.22	<b>163,684</b>
<b>Less Than High School</b>	579,973 76.23	180,855 23.77	<b>760,828</b>
<b>Some High School No Diploma</b>	313,788 77.04	93,506 22.96	<b>407,294</b>
<b>High School Graduate</b>	500,698 84.7	90,467 15.3	<b>591,165</b>
<b>Some College, No Bachelors</b>	700,810 89.99	77,975 10.01	<b>778,785</b>
<b>Four Year Degree</b>	522,170 95.35	25,461 4.65	<b>547,631</b>
<b>Graduate Degree</b>	252,837 97.21	7,263 2.79	<b>260,100</b>
<b>Total</b>	<b>2,987,761</b> <b>85.13</b>	<b>521,726</b> <b>14.87</b>	<b>3,509,487</b>

There are limitless ways by which to examine the distribution of poverty among the persons and households of the United Way’s service area. Additional tables are included in Appendix 1:

- Individual Poverty by Race / Ethnicity and Sex - Table 13
- Individual Poverty by Race / Ethnicity, Sex, and Age - Table 14
- Individual Poverty by Household Type and Race / Ethnicity - Table 15
- Household Poverty by Household Type and Race / Ethnicity of Householder - Table 16
- Individual Poverty by Race / Ethnicity and Educational Attainment - Table 17
- Individual Poverty by Citizenship Status - Table 18
- Household Poverty by Household Language - Table 19
- Individual Poverty by Employment Status - Table 20
- Individual Poverty by Race / Ethnicity and Employment Status - Table 21
- Household Poverty by Family and Employment Status - Table 22
- Household Poverty by Grandparent-Headed Status - Table 23
- Household Poverty by Multigenerational Status - Table 24

# Appendix 1

---

## Additional Tables

Table 13. Number of Persons in Category, Percent in Poverty, Number in Poverty, and Median Percent of Poverty Level by Race / Ethnicity and Sex, 2010

Race / Ethnicity	Male	Female
<b>Non-Hispanic White</b>	796,974	828,917
	6.28	7.3
	50,022	60,531
	474	441
<b>Non-Hispanic Black</b>	285,215	329,716
	21.37	26.24
	60,964	86,508
	241	205
<b>Non-Hispanic Asian</b>	113,882	118,194
	7.44	9.17
	8,469	10,837
	401	404
<b>Non-Hispanic Other</b>	41,470	43,125
	13.86	13.7
	5,746	5,910
	299	265
<b>Hispanic</b>	578,739	541,048
	22.45	26.8
	129,911	144,976
	175	159

Table 14. Number of Persons in Category, Percent in Poverty, Number in Poverty, and Median Percent of Poverty Level by Race / Ethnicity, Age Group, and Sex, 2010

Race/Ethnicity	Under 5			5 to 17			18 to 64			65 and Up		
	Male	Female	Total	Male	Female	Total	Male	Female	Total	Male	Female	Total
<b>Non-Hispanic White</b>	43,656	42,910	<b>86,566</b>	131,010	122,166	<b>253,176</b>	528,017	538,899	<b>1,066,916</b>	94,291	124,942	<b>219,233</b>
	9.6	7.6	<b>8.6</b>	8.3	8.8	<b>8.5</b>	6.1	7.5	<b>6.8</b>	3.1	5	<b>4.2</b>
	4,178	3,261	<b>7,439</b>	10,827	10,696	<b>21,523</b>	32,124	40,274	<b>72,398</b>	2,893	6,300	<b>9,193</b>
	404	407	<b>406</b>	424	414	<b>419</b>	500	473	<b>487</b>	461	343	<b>394</b>
<b>Non-Hispanic Black</b>	23,369	23,850	<b>47,219</b>	65,627	62,091	<b>127,718</b>	180,570	217,983	<b>398,553</b>	15,649	25,792	<b>41,441</b>
	37.9	38.1	<b>38</b>	34.1	35	<b>34.5</b>	15.3	22.8	<b>19.4</b>	13.1	23.4	<b>19.5</b>
	8,865	9,085	<b>17,950</b>	22,401	21,720	<b>44,121</b>	27,647	49,665	<b>77,312</b>	2,051	6,038	<b>8,089</b>
	134	132	<b>133</b>	171	159	<b>171</b>	285	232	<b>257</b>	232	174	<b>195</b>
<b>Non-Hispanic Asian</b>	8,681	9,005	<b>17,686</b>	21,532	20,767	<b>42,299</b>	77,030	80,430	<b>157,460</b>	6,639	7,992	<b>14,631</b>
	10.5	4.6	<b>7.5</b>	6.7	10.6	<b>8.6</b>	6.9	9.2	<b>8.1</b>	12	9.9	<b>10.9</b>
	914	417	<b>1,331</b>	1,449	2,204	<b>3,653</b>	5,312	7,421	<b>12,733</b>	794	795	<b>1,589</b>
	408	458	<b>453</b>	401	362	<b>377</b>	405	407	<b>407</b>	354	331	<b>332</b>
<b>Non-Hispanic Other</b>	6,366	4,692	<b>11,058</b>	11,538	13,966	<b>25,504</b>	21,833	21,822	<b>43,655</b>	1,733	2,645	<b>4,378</b>
	21	11.7	<b>17.1</b>	12.4	14.1	<b>13.3</b>	11.9	15.1	<b>13.5</b>	21.3	3.4	<b>10.5</b>
	1,339	550	<b>1,889</b>	1,430	1,971	<b>3,401</b>	2,608	3,299	<b>5,907</b>	369	90	<b>459</b>
	234	246	<b>235</b>	244	251	<b>251</b>	356	286	<b>319</b>	162	231	<b>231</b>
<b>Hispanic</b>	64,145	62,476	<b>126,621</b>	148,075	142,757	<b>290,832</b>	351,432	317,813	<b>669,245</b>	15,087	18,002	<b>33,089</b>
	34.7	35.8	<b>35.2</b>	32.5	29.1	<b>30.8</b>	16.2	24.6	<b>20.2</b>	18.6	15.6	<b>17</b>
	22,256	22,349	<b>44,605</b>	48,087	41,602	<b>89,689</b>	56,758	78,218	<b>134,976</b>	2,810	2,807	<b>5,617</b>
	127	122	<b>127</b>	136	144	<b>141</b>	201	171	<b>185</b>	189	189	<b>189</b>

Table 15. Number of Persons in Category, Percent in Poverty, Number in Poverty, and Median Percent of Poverty Level by Household Type and Race / Ethnicity, 2010

Household Type	Non-Hispanic White	Non-Hispanic Black	Non-Hispanic Asian	Non-Hispanic Other	Hispanic
<b>Married Couple</b>	1,071,177	236,927	183,892	47,965	708,364
	3.2	9.8	5.8	7.6	20.3
	34,737	23,305	10,685	3,631	143,956
	501	347	435	343	179
<b>Male-Headed, No Wife</b>	58,636	43,657	9,848	7,649	115,644
	12.1	25.2	6.6	19.9	21.9
	7,082	11,009	654	1,519	25,325
	319	201	310	271	158
<b>Female-Headed, No Husband</b>	178,406	218,535	16,643	16,899	206,375
	15.9	40	17.1	22.3	43.6
	28,440	87,511	2,848	3,761	89,927
	257	132	266	200	116
<b>Male-Headed, Non-Family</b>	144,151	43,496	13,805	5,593	56,964
	13.7	20.3	18.3	27.3	17.1
	19,677	8,814	2,521	1,527	9,715
	354	257	355	212	178
<b>Female-Headed, Non-Family</b>	152,189	58,376	7,386	5,992	27,286
	12.9	26.3	34	20.3	20.7
	19,591	15,368	2,511	1,218	5,659
	309	203	186	231	181

Table 16. Number of Households in Category, Percent in Poverty, Number in Poverty, and Median Percent of Poverty Level by Household Type and Race / Ethnicity of Householder, 2010

Household Type	Non-Hispanic White	Non-Hispanic Black	Non-Hispanic Asian	Non-Hispanic Other	Hispanic
<b>Married Couple</b>	360,703	70,174	48,349	10,613	153,095
	2.4	7.8	5.6	7.3	18.5
	8,753	5,448	2,715	773	28,339
	501	378	456	343	194
<b>Male-Headed, No Wife</b>	20,393	13,770	2,471	1,462	28,153
	7.7	23.1	3.2	18.7	16.4
	1572	3176	80	274	4622
	354	210	255	271	177
<b>Female-Headed, No Husband</b>	61,206	63,760	5,490	2,986	48,370
	14.1	35.4	19.7	31.4	42.5
	8632	22556	1079	937	20534
	268	147	207	194	122
<b>Male-Headed, Non-Family</b>	111,942	36,915	10,330	4,621	34,021
	10	17	20	20	11
	11077	6387	2054	910	3649
	398	266	357	220	222
<b>Female-Headed, Non-Family</b>	130,032	50,925	5,982	4,698	19,454
	10.3	23.8	29.1	17.1	15.3
	13414	12118	1742	802	2977
	311	220	213	241	189

Table 17. Number of Persons in Category, Percent in Poverty, Number in Poverty, and Median Percent of Poverty Level by Race / Ethnicity and Educational Attainment for the Population Age 25 and Up, 2010

Race / Ethnicity	No Formal Education	Less Than High School	Some High School, No Diploma	High School Graduate	Some College	Four Year Degree	Graduate Degree
<b>Non-Hispanic White</b>	3,103	12,322	44,863	225,049	358,626	355,243	171,422
	19.5	20.0	17.2	7.7	5.3	2.5	2.5
	605	2,461	7,711	17,289	19,054	8,739	4,229
	248	241	239	339	432	501	501
<b>Non-Hispanic Black</b>	4,850	5,988	33,517	106,118	142,136	62,310	24,985
	36.0	35.3	39.8	26.3	12.5	6.7	4.3
	1,745	2,112	13,344	27,930	17,813	4,154	1,078
	121	120	127	190	279	390	451
<b>Non-Hispanic Asian</b>	5,515	3,643	8,315	24,116	24,702	46,968	41,037
	18.8	22.8	11.8	6.9	8.0	4.9	2.6
	1,039	830	983	1,662	1,966	2,320	1,069
	192	154	308	310	328	496	501
<b>Non-Hispanic Other</b>	342	1,098	2,557	6,157	16,432	8,927	4,275
	14.3	29.9	16.0	21.1	13.4	4.4	3.4
	49	329	409	1,300	2,206	397	147
	130	179	195	248	292	500	501
<b>Hispanic</b>	25,510	135,199	112,591	134,264	102,589	45,325	16,064
	28.3	30.2	26.0	15.6	9.7	9.1	3.7
	7,232	40,782	29,224	20,892	9,972	4,110	589
	175	134	159	196	276	391	501

Table 18. Number and Percent of Persons in Poverty by Citizenship Status, 2010

Citizenship Status	At or Above		Total
	Poverty	Below Poverty	
<b>Non-Citizen</b>	404,612 75.64	130,339 24.36	<b>534,951</b>
<b>Citizen</b>	2,708,794 86.2	433,535 13.8	<b>3,142,329</b>
<b>Total</b>	<b>3,113,406</b> <b>84.67</b>	<b>563,874</b> <b>15.33</b>	<b>3,677,280</b>

Table 19. Number and Percent of Households in Poverty by Household Language, 2010

Household Language	At or Above		Total
	Poverty	Below Poverty	
<b>English Only</b>	840,825 90.82	84,941 9.18	<b>925,766</b>
<b>Spanish</b>	199,071 80.32	48,783 19.68	<b>247,854</b>
<b>Other Indo-European Languages</b>	45,349 92.01	3,939 7.99	<b>49,288</b>
<b>Asian and Pacific Islander Languages</b>	49,894 90.64	5,151 9.36	<b>55,045</b>
<b>Other Languages</b>	13,332 86.27	2,121 13.73	<b>15,453</b>
<b>Total</b>	<b>1,148,471</b> <b>88.79</b>	<b>144,935</b> <b>11.21</b>	<b>1,293,406</b>



Table 20. Number and Percent of Persons in Poverty by Employment Status for the Civilian Population Age 16 and Up, 2010

Employment Status	At or Above		Total
	Poverty	Below Poverty	
<b>Not in Labor Force</b>	647,375 79.31	168,880 20.69	<b>816,255</b>
<b>Unemployed</b>	122,011 70.19	51,827 29.81	<b>173,838</b>
<b>Employed</b>	1,637,097 92.69	129,185 7.31	<b>1,766,282</b>
<b>Total</b>	<b>2,406,483</b> <b>87.31</b>	<b>349,892</b> <b>12.69</b>	<b>2,756,375</b>

**Table 21. Number of Persons in Category, Percent in Poverty, Number in Poverty, and Median Percent of Poverty Level by Race / Ethnicity and Employment Status for the Civilian Population Age 16 and Up, 2010**

<b>Race / Ethnicity</b>	<b>Not in Labor</b>	<b>Unemployed</b>	<b>Employed</b>
<b>Non-Hispanic White</b>	396,600	65,413	865,643
	10.5	19.1	3.5
	41,668	12,511	30,401
	363	279	501
<b>Non-Hispanic Black</b>	149,589	44,887	265,455
	32.9	39	9.4
	49,250	17,518	24,943
	144	152	310
<b>Non-Hispanic Asian</b>	53,017	9,990	114,400
	16.7	13.8	3.8
	8,862	1,383	4,338
	316	255	446
<b>Non-Hispanic Other</b>	13,889	2,971	33,126
	25.6	53.8	5.3
	3,560	1,597	1,744
	194	98	374
<b>Hispanic</b>	203,160	50,577	487,658
	32.3	37.2	13.9
	65,540	18,818	67,759
	141	135	212

Table 22. Number and Percent of Households in Poverty by Family and Employment Status, 2010

Family & Employment Status	At or Above		Total
	Poverty	Below Poverty	
<b>Married Couple - Both in LF</b>	366,832 97.16	10,706 2.84	<b>377,538</b>
<b>Married Couple - One in LF</b>	195,940 89.69	22,523 10.31	<b>218,463</b>
<b>Married Couple - Not in LF</b>	71,407 91.23	6,868 8.77	<b>78,275</b>
<b>Male-Headed - In LF</b>	40,501 88.72	5,151 11.28	<b>45,652</b>
<b>Male-Headed - Not in LF</b>	7,373 71.57	2,929 28.43	<b>10,302</b>
<b>Female-Headed - In LF</b>	94,435 78.9	25,250 21.1	<b>119,685</b>
<b>Female-Headed - Not in LF</b>	25,048 58.77	17,574 41.23	<b>42,622</b>
<b>Total</b>	<b>801,536</b> <b>89.8</b>	<b>91,001</b> <b>10.2</b>	<b>892,537</b>

Table 23. Number and Percent of Households in Poverty by Grandparent Head of Household Status, 2010

Grandparent Households	At or Above		Total
	Poverty	Below Poverty	
<b>Non-Grandparent Headed</b>	1,143,219 88.86	143,319 11.14	<b>1,286,538</b>
<b>Grandparent Headed</b>	5,252 76.47	1,616 23.53	<b>6,868</b>
<b>Total</b>	<b>1,148,471</b> <b>88.79</b>	<b>144,935</b> <b>11.21</b>	<b>1,293,406</b>

Table 24. Number and Percent of Households in Poverty by Multigenerational Status, 2010

Multigenerational Status	At or Above		Total
	Poverty	Below Poverty	
<b>Multigenerational</b>	1,082,548 87.58	153,473 12.42	<b>1,236,021</b>
<b>Non-Multigenerational</b>	52,747 82.55	11,147 17.45	<b>63,894</b>
<b>Total</b>	<b>1,135,295</b> <b>87.34</b>	<b>164,620</b> <b>12.66</b>	<b>1,299,915</b>

# Appendix 2

## Reliability of the Estimates

### A Summary of the Data Source

The estimates presented in this report were derived from the Public Use Microdata Sample (PUMS), which is a representative sample of individual records drawn from the American Community Survey (ACS). They represent a roughly 1% sample of the nation's households, and all of the persons in each of the sampled households. Because the estimates are drawn from a sample that is itself drawn from a sample of the population, significant care must be taken in estimating the reliability for each percentage or total computed. Considerations of geography and sampling strategy are outlined below.

### Geographic Implications

The United Way of Metropolitan Dallas serves Dallas, Collin, Rockwall, and southern Denton counties. The data in PUMS are made available at a unit of geography known as the Public Use Microdata Area, or PUMA. PUMAs are sufficiently large so as to ensure confidentiality of census respondent information. In counties like Dallas, the sheer number of persons allow there to be 15 PUMAs. When counties have smaller populations, they're often combined to create one PUMA, as was the case with Rockwall and Kaufman counties. This has implications for the analysis of ACS PUMS data for the United Way service area.

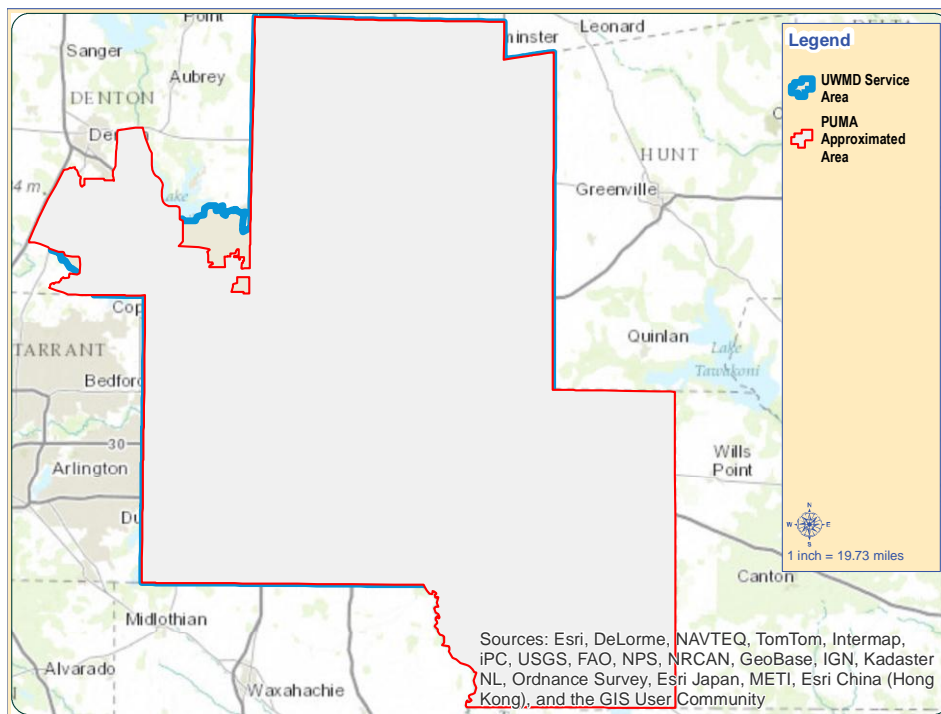


Figure 2. Alignment of United Way Service Area and PUMAs, 2010

Figure 2 illustrates the alignment between the United Way service area, outlined in blue, and the PUMAs that were aggregated to comprise the approximations used in this report, outlined in red<sup>2</sup>. While the counties of Dallas, Rockwall, and Collin are completely contained, the approximation area includes portions of Denton County that fall beyond the service area. It also includes all of Kaufman County. While the implications for relative prevalence (e.g., percentages) are minimal, Kaufman county does add roughly 100,000 persons into the formula. However, with an aggregate population in the approximation area of almost 3.7 million, the influence of 100,000 persons is negligible.

## Reliability of the Estimates

Each recorded included in the PUMS data is weighted to reflect the probability of that record having been selected into the sample. This weighting is a method of controlling for variations in the sampling procedure designed to ensure representation across various dimensions. An additional set of 80 weights is generated by the Census Bureau for each record using a method known as Successive Difference Replicates (SDR) Weighting. To assess the reliability of the estimates prepared above, they are actually reproduced 80 times using each of the different SDR weights. The standard error of the estimate is generated then from the 80 differently weighted versions to produce a standard error that recognizes the “sample from a sample” issue peculiar to PUMS data.

The tables that follow provide, for each percentage and total provided in the report and in Appendix 1, the standard error for the estimate that was produced using the SDR methodology. The standard error can be thought of as one indicator of the reliability of the estimate, in that the larger the standard error the less reliable the estimate is. The standard error is then used in the computation of a 95% confidence interval around the original estimate. The lower and upper bounds of the confidence interval are reported in the table as well. Finally, using the coefficient of variation (CV) as a guide, we provide an indicator of the reliability of each estimate.<sup>3</sup> When the coefficient of variation falls at or below 12%, the estimate is thought to be of high reliability. When the coefficient of variation falls above 40%, the estimate is thought to be of low reliability. When the coefficient of variation falls in between, the estimate is said to be of medium reliability. The level of reliability is indicated in the tables below by a green circle for high reliability, a yellow triangle for medium reliability, and a red diamond for low reliability.

**Table 25. Reliability Indicators for Percent of Persons in Poverty, 2010**

Year	Percent	Standard Error	Lower Bound	Upper Bound	Reliability
2005	13.449	0.541	12.388	14.509	●
2006	12.959	0.450	12.076	13.841	●
2007	13.545	0.454	12.656	14.434	●
2008	13.721	0.470	12.800	14.641	●
2009	15.220	0.464	14.311	16.128	●
2010	15.334	0.426	14.499	16.169	●

<sup>2</sup> The following PUMAs were aggregated to comprise the United Way Service Area: 2000, 2101, 2102, 2103, 2104, 2201, 2301, 2302, 2303, 2304, 2305, 2306, 2307, 2308, 2309, 2310, 2311, 2312, 2313, 2314, and 2315.

<sup>3</sup> For a complete discussion of the methodology, see National Research Council, Using the American Community Survey: Benefits and Challenges (Washington, D.C.: The National Academies Press, 2007).

Table 26. Reliability Indicators for Number of Persons in Poverty, 2010

Year	Total	Standard Error	Lower Bound	Upper Bound	Reliability
2005	452,178	18,696.05	415,534.40	488,821.60	●
2006	455,562	15,778.24	424,637.20	486,486.80	●
2007	484,950	16,370.37	452,864.70	517,035.30	●
2008	503,388	17,321.46	469,438.60	537,337.40	●
2009	572,508	17,554.82	538,101.20	606,914.80	●
2010	563,874	15,643.02	533,214.20	594,533.80	●

Table 27. Reliability Indicators for Percent of Persons in Poverty by Race / Ethnicity, 2010

Race / Ethnicity	Percent	Standard Error	Lower Bound	Upper Bound	Reliability
Non-Hispanic White	6.800	0.375	6.064	7.535	●
NH Black	23.982	1.086	21.853	26.111	●
NH Asian	8.319	0.924	6.507	10.130	●
NH Other	13.779	2.037	9.785	17.772	▲
Hispanic	24.548	1.041	22.507	26.589	●

Table 28. Reliability Indicators for Number of Persons in Poverty by Race / Ethnicity, 2010

Race / Ethnicity	Total	Standard Error	Lower Bound	Upper Bound	Reliability
NH White	110,553	6,061.14	98,673.38	122,432.60	●
NH Black	147,472	6,726.15	134,289.00	160,655.00	●
NH Asian	19,306	2,131.10	15,129.12	23,482.88	●
NH Other	11,656	1,772.48	8,182.00	15,130.00	▲
Hispanic	274,887	11,667.31	252,019.50	297,754.50	●

Table 29. Reliability Indicators for Percent of Persons in Poverty by Age Group, 2010

Age Group	Percent	Standard Error	Lower Bound	Upper Bound	Reliability
Under 5	25.320	1.419	22.540	28.101	●
5 to 17	21.958	0.784	20.422	23.494	●
18 to 64	12.986	0.395	12.212	13.760	●
65 and Up	7.976	0.512	6.973	8.979	●

Table 30. Reliability Indicators for Number of Persons in Poverty by Age Group, 2010

Age Group	Total	Standard Error	Lower Bound	Upper Bound	Reliability
Under 5	73,214	4,027.04	65,321.15	81,106.85	●
5 to 17	162,387	5,868.95	150,884.10	173,889.90	●
18 to 64	303,326	9,213.09	285,268.70	321,383.30	●
65 and Up	24,947	1,588.30	21,834.00	28,060.00	●

Table 31. Reliability Indicators for Percent of Persons in Poverty by Sex, 2010

Sex	Percent	Standard Error	Lower Bound	Upper Bound	Reliability
Male	14.046	0.459	13.147	14.945	●
Female	16.591	0.494	15.623	17.560	●

Table 32. Reliability Indicators for Number of Persons in Poverty by Sex, 2010

Sex	Total	Standard Error	Lower Bound	Upper Bound	Reliability
Male	255,112	8,317.08	238,810.80	271,413.20	●
Female	308,762	9,184.39	290,760.90	326,763.10	●

Table 33. Reliability Indicators for Percent of Persons in Poverty by Household Type, 2010

Household Type	Percent	Standard Error	Lower Bound	Upper Bound	Reliability
Married Couple	9.621	0.513	8.616	10.626	●
Male-Headed, No Wife	19.364	1.687	16.057	22.671	●
Female-Headed, No Husband	33.365	1.317	30.784	35.946	●
Male-Headed, Non-Family	16.005	0.808	14.422	17.588	●
Female-Headed, Non-Family	17.652	0.900	15.889	19.415	●

Table 34. Reliability Indicators for Number of Persons in Poverty by Household Type, 2010

Household Type	Total	Standard Error	Lower Bound	Upper Bound	Reliability
Married Couple	216,314	11,741.73	193,300.60	239,327.40	●
Male-Headed, No Wife	45,589	4,486.19	36,796.23	54,381.77	●
Female-Headed, No Husband	212,487	10,513.13	191,881.60	233,092.40	●
Male-Headed, Non-Family	42,254	2,442.09	37,467.59	47,040.41	●
Female-Headed, Non-Family	44,347	2,613.22	39,225.18	49,468.82	●

Table 35. Reliability Indicators for Percent of Persons in Poverty by Housing Structure Type, 2010

Structure Type	Percent	Standard Error	Lower Bound	Upper Bound	Reliability
Mobile Home / Trailer	28.239	3.694	20.998	35.480	▲
Single Family - Detached	10.227	0.447	9.350	11.103	●
Single Family - Attached	18.998	2.834	13.444	24.552	▲
Apartments - Less than 10	32.030	1.644	28.808	35.252	●
Apartments - 10 to 49	27.859	1.627	24.670	31.048	●
Apartments - 50 or More	21.238	1.918	17.480	24.997	●
Other	39.522	23.316	-6.177	85.221	◆



Table 36. Reliability Indicators for Number of Persons in Poverty by Housing Structure Type, 2010

Structure Type	Total	Standard			Reliability
		Error	Lower Bound	Upper Bound	
Mobile Home / Trailer	28,291	4,406.64	19,654.14	36,927.86	▲
Single Family - Detached	259,463	11,673.64	236,583.10	282,342.90	●
Single Family - Attached	20,431	3,572.76	13,428.51	27,433.49	▲
Apartments - Less than 10	109,789	7,008.92	96,051.76	123,526.20	●
Apartments - 10 to 49	111,161	7,918.46	95,641.10	126,680.90	●
Apartments - 50 or More	31,509	3,144.60	25,345.69	37,672.31	●
Other	347	352.45	(343.79)	1,037.79	◆

Table 37. Reliability Indicators for Percent of Persons in Poverty by Educational Attainment for the Population Age 25 and Up, 2010

Educational Attainment	Percent	Standard			Reliability
		Error	Lower Bound	Upper Bound	
No Formal Education	28.225	1.782	24.732	31.717	●
Less Than High School	23.771	0.874	22.057	25.484	●
Some High School No Diploma	22.958	0.922	21.151	24.764	●
High School Graduate	15.303	0.593	14.142	16.465	●
Some College No Bachelors	10.012	0.534	8.966	11.059	●
Four Year Degree	4.649	0.356	3.952	5.346	●
Graduate Degree	2.792	0.373	2.061	3.524	▲

Table 38. Reliability Indicators for Number of Persons in Poverty by Educational Attainment for the Population Age 25 and Up, 2010

Educational Attainment	Total	Standard			Reliability
		Error	Lower Bound	Upper Bound	
No Formal Education	46,199	3,415.09	39,505.55	52,892.45	●
Less Than High School	180,855	7,170.16	166,801.80	194,908.20	●
Some High School No Diploma	93,506	4,239.31	85,197.10	101,814.90	●
High School Graduate	90,467	3,698.69	83,217.70	97,716.30	●
Some College No Bachelors	77,975	4,239.24	69,666.24	86,283.76	●
Four Year Degree	25,461	1,981.73	21,576.89	29,345.11	●
Graduate Degree	7,263	969.12	5,363.56	9,162.44	▲

Table 39. Reliability Indicators for Percent of Persons in Poverty by Citizenship Status, 2010

Citizenship Status	Percent	Standard			Reliability
		Error	Lower Bound	Upper Bound	
Non-Citizen	24.365	1.351	21.717	27.012	●
Citizen	13.797	0.366	13.078	14.515	●

Table 40. Reliability Indicators for Number of Persons in Poverty by Citizenship Status, 2010

Citizenship Status	Total	Standard			Reliability
		Error	Lower Bound	Upper Bound	
Non-Citizen	130,339	7,765.00	115,119.90	145,558.10	●
Citizen	433,535	11,454.30	411,085.00	455,985.00	●

Table 41. Reliability Indicators for Percent of Persons in Poverty by Employment Status for the Civilian Population Age 16 and Up, 2010

Employment Status	Percent	Standard		Lower Bound	Upper Bound	Reliability
		Error	Error			
Not in Labor Force	20.690	0.620	19.475	21.904	●	
Unemployed	29.813	1.439	26.993	32.634	●	
Employed	7.314	0.333	6.661	7.967	●	

Table 42. Reliability Indicators for Number of Persons in Poverty by Employment Status for the Civilian Population Age 16 and Up, 2010

Employment Status	Total	Standard			Reliability
		Error	Lower Bound	Upper Bound	
Not in Labor Force	168,880	5,085.96	158,911.70	178,848.30	●
Unemployed	51,827	3,037.58	45,873.45	57,780.55	●
Employed	129,185	5,925.31	117,571.60	140,798.40	●

Table 43. Reliability Indicators for Percent of Persons in Poverty by Race / Ethnicity and Sex, 2010

Race / Ethnicity & Sex	Percent	Standard		Lower Bound	Upper Bound	Reliability
		Error	Error			
Non-Hispanic White Male	6.276	0.419	5.454	7.099	●	
Non-Hispanic White Female	7.302	0.442	6.437	8.168	●	
Non-Hispanic Black Male	21.375	1.252	18.921	23.828	●	
Non-Hispanic Black Female	26.237	1.328	23.635	28.840	●	
Non-Hispanic Asian Male	7.437	1.012	5.454	9.419	▲	
Non-Hispanic Asian Female	9.169	1.118	6.978	11.360	▲	
Non-Hispanic Other Male	13.856	2.662	8.638	19.073	▲	
Non-Hispanic Other Female	13.704	2.382	9.035	18.374	▲	
Hispanic Male	22.447	1.198	20.100	24.795	●	
Hispanic Female	26.795	1.080	24.678	28.913	●	

Table 44. Reliability Indicators for Number of Persons in Poverty by Race / Ethnicity and Sex, 2010

Race / Ethnicity & Sex	Total	Standard			Reliability
		Error	Lower Bound	Upper Bound	
Non-Hispanic White Male	50,022	3,342.86	43,470.11	56,573.89	●
Non-Hispanic White Female	60,531	3,632.03	53,412.35	67,649.65	●
Non-Hispanic Black Male	60,964	3,572.28	53,962.46	67,965.54	●
Non-Hispanic Black Female	86,508	4,448.63	77,788.85	95,227.15	●
Non-Hispanic Asian Male	8,469	1,152.22	6,210.70	10,727.30	▲
Non-Hispanic Asian Female	10,837	1,312.85	8,263.85	13,410.15	▲
Non-Hispanic Other Male	5,746	1,122.28	3,546.36	7,945.64	▲
Non-Hispanic Other Female	5,910	1,159.08	3,638.24	8,181.76	▲
Hispanic Male	129,911	6,948.03	116,293.10	143,528.90	●
Hispanic Female	144,976	5,881.38	133,448.70	156,503.30	●

Table 45. Reliability Indicators for Percent of Persons in Poverty by Race / Ethnicity and Educational Attainment for the Population Age 25 and Up, 2010

Race / Ethnicity & Educational Attainment	Percent	Standard Error	Lower Bound	Upper Bound	Reliability
NH White-No Formal Education	19.497	9.410	1.053	37.941	◆
NH White-Less Than High School	19.972	4.744	10.675	29.270	▲
NH White-Some HS No Diploma	17.188	1.995	13.278	21.098	●
NH White-HS Graduate	7.682	0.797	6.121	9.244	●
NH White-Some College No BA	5.313	0.481	4.370	6.256	●
NH White-4 Year Degree	2.460	0.340	1.793	3.127	▲
NH White-Graduate Degree	2.467	0.431	1.622	3.312	▲
NH Black-No Formal Education	35.979	8.918	18.501	53.458	▲
NH Black-Less Than High School	35.271	6.339	22.847	47.694	▲
NH Black-Some HS No Diploma	39.813	3.031	33.872	45.753	●
NH Black-HS Graduate	26.320	1.973	22.453	30.187	●
NH Black-Some College No BA	12.532	1.184	10.211	14.854	●
NH Black-4 Year Degree	6.667	1.385	3.953	9.380	▲
NH Black-Graduate Degree	4.315	1.328	1.711	6.918	▲
NH Asian-No Formal Education	18.840	8.803	1.585	36.094	◆
NH Asian-Less Than High School	22.783	9.262	4.630	40.936	◆
NH Asian-Some HS No Diploma	11.822	3.470	5.020	18.624	▲
NH Asian-HS Graduate	6.892	1.881	3.205	10.578	▲
NH Asian-Some College No BA	7.959	2.107	3.829	12.089	▲
NH Asian-4 Year Degree	4.940	1.313	2.367	7.512	▲
NH Asian-Graduate Degree	2.605	0.798	1.041	4.168	▲
NH Other-No Formal Education	14.327	13.420	-11.975	40.630	◆
NH Other-Less Than High School	29.873	15.745	-0.988	60.733	◆
NH Other-Some HS No Diploma	15.995	8.670	-0.998	32.989	◆
NH Other-HS Graduate	21.114	6.261	8.843	33.386	▲
NH Other-Some College No BA	13.425	2.985	7.575	19.275	▲
NH Other-4 Year Degree	4.447	3.627	-2.663	11.557	◆
NH Other-Graduate Degree	3.439	2.771	-1.993	8.870	◆
Hispanic-No Formal Education	28.350	3.845	20.814	35.885	▲
Hispanic-Less Than High School	30.164	1.982	26.280	34.049	●
Hispanic-Some HS No Diploma	25.956	2.119	21.803	30.108	●
Hispanic-HS Graduate	15.560	1.189	13.231	17.890	●
Hispanic-Some College No BA	9.720	1.288	7.196	12.244	▲
Hispanic-4 Year Degree	9.068	1.854	5.434	12.702	▲
Hispanic-Graduate Degree	3.667	1.917	-0.091	7.424	◆

Table 46. Reliability Indicators for Number of Persons in Poverty by Race / Ethnicity and Educational Attainment for the Population Age 25 and Up, 2010

Race / Ethnicity & Educational Attainment	Total	Standard Error	Lower Bound	Upper Bound	Reliability
NH White-No Formal Education	605	283.00	50.32	1,159.68	◆
NH White-Less Than High School	2,461	691.55	1,105.59	3,816.41	▲
NH White-Some HS No Diploma	7,711	961.40	5,826.70	9,595.30	▲
NH White-HS Graduate	17,289	1,846.65	13,669.63	20,908.37	●
NH White-Some College No BA	19,054	1,753.46	15,617.29	22,490.71	●
NH White-4 Year Degree	8,739	1,170.00	6,445.84	11,032.16	▲
NH White-Graduate Degree	4,229	733.25	2,791.86	5,666.14	▲
NH Black-No Formal Education	1,745	594.68	579.45	2,910.55	▲
NH Black-Less Than High School	2,112	402.96	1,322.21	2,901.79	▲
NH Black-Some HS No Diploma	13,344	1,291.88	10,811.96	15,876.04	●
NH Black-HS Graduate	27,930	2,359.80	23,304.87	32,555.13	●
NH Black-Some College No BA	17,813	1,762.66	14,358.25	21,267.75	●
NH Black-4 Year Degree	4,154	882.64	2,424.05	5,883.95	▲
NH Black-Graduate Degree	1,078	345.84	400.16	1,755.84	▲
NH Asian-No Formal Education	1,039	558.73	(56.09)	2,134.09	◆
NH Asian-Less Than High School	830	372.91	99.10	1,560.90	◆
NH Asian-Some HS No Diploma	983	310.83	373.79	1,592.21	▲
NH Asian-HS Graduate	1,662	475.67	729.70	2,594.30	▲
NH Asian-Some College No BA	1,966	529.30	928.59	3,003.41	▲
NH Asian-4 Year Degree	2,320	633.32	1,078.72	3,561.28	▲
NH Asian-Graduate Degree	1,069	329.30	423.59	1,714.41	▲
NH Other-No Formal Education	49	52.24	(53.40)	151.40	◆
NH Other-Less Than High School	328	188.78	(42.00)	698.00	◆
NH Other-Some HS No Diploma	409	209.84	(2.27)	820.27	◆
NH Other-HS Graduate	1,300	428.80	459.57	2,140.43	▲
NH Other-Some College No BA	2,206	461.69	1,301.10	3,110.90	▲
NH Other-4 Year Degree	397	333.08	(255.83)	1,049.83	◆
NH Other-Graduate Degree	147	121.06	(90.27)	384.27	◆
Hispanic-No Formal Education	7,232	1,076.49	5,122.11	9,341.89	▲
Hispanic-Less Than High School	40,782	3,054.56	34,795.17	46,768.83	●
Hispanic-Some HS No Diploma	29,224	2,744.37	23,845.13	34,602.87	●
Hispanic-HS Graduate	20,892	1,630.75	17,695.79	24,088.21	●
Hispanic-Some College No BA	9,972	1,315.51	7,393.66	12,550.34	▲
Hispanic-4 Year Degree	4,110	919.27	2,308.27	5,911.73	▲
Hispanic-Graduate Degree	589	300.75	(0.47)	1,178.47	◆

Table 47. Reliability Indicators for Percent of Persons in Poverty by Race / Ethnicity and Employment Status for the Civilian Population Age 16 and Up, 2010

Race / Ethnicity & Employment Status	Percent	Standard Error	Lower Bound	Upper Bound	Reliability
NH White Not in Labor Force	10.506	0.504	9.518	11.494	●
NH White Unemployed	19.126	1.963	15.279	22.973	●
NH White Employed	3.512	0.315	2.895	4.129	●
NH Black Not in Labor Force	32.924	1.931	29.139	36.708	●
NH Black Unemployed	39.027	3.329	32.502	45.551	●
NH Black Employed	9.396	0.699	8.026	10.766	●
NH Asian Not in Labor Force	16.715	1.881	13.029	20.402	●
NH Asian Unemployed	13.844	4.510	5.004	22.684	▲
NH Asian Employed	3.792	0.727	2.366	5.217	▲
NH Other Not in Labor Force	25.632	4.605	16.607	34.657	▲
NH Other Unemployed	53.753	10.317	33.532	73.973	▲
NH Other Employed	5.265	1.212	2.888	7.641	▲
Hispanic Not in Labor Force	32.260	1.454	29.411	35.110	●
Hispanic Unemployed	37.207	2.936	31.453	42.960	●
Hispanic Employed	13.895	0.848	12.233	15.557	●

Table 48. Reliability Indicators for Number of Persons in Poverty by Race / Ethnicity and Employment Status for the Civilian Population Age 16 and Up, 2010

Race / Ethnicity & Employment Status	Total	Standard Error	Lower Bound	Upper Bound	Reliability
NH White Not in Labor Force	41,668	2,057.94	37,634.52	45,701.48	●
NH White Unemployed	12,511	1,377.05	9,812.03	15,209.97	●
NH White Employed	30,401	2,739.60	25,031.48	35,770.52	●
NH Black Not in Labor Force	49,250	3,197.61	42,982.81	55,517.19	●
NH Black Unemployed	17,518	1,864.49	13,863.68	21,172.32	●
NH Black Employed	24,943	1,863.12	21,291.35	28,594.65	●
NH Asian Not in Labor Force	8,862	1,128.62	6,649.96	11,074.04	▲
NH Asian Unemployed	1,383	463.70	474.16	2,291.84	▲
NH Asian Employed	4,338	844.28	2,683.24	5,992.76	▲
NH Other Not in Labor Force	3,560	740.04	2,109.55	5,010.45	▲
NH Other Unemployed	1,597	500.13	616.76	2,577.24	▲
NH Other Employed	1,744	391.62	976.44	2,511.56	▲
Hispanic Not in Labor Force	65,540	3,094.88	59,474.15	71,605.85	●
Hispanic Unemployed	18,818	1,971.92	14,953.10	22,682.90	●
Hispanic Employed	67,759	4,110.53	59,702.52	75,815.48	●

Table 49. Reliability Indicators for Percent of Persons in Poverty by Race / Ethnicity, Sex, and Age, 2010

Race / Ethnicity, Sex, & Age	Percent	Standard Error	Lower Bound	Upper Bound	Reliability
NH White Male Under 5	9.570	1.921	5.804	13.336	▲
NH White Male 5 to 17	8.264	1.252	5.810	10.719	▲
NH White Male 18 to 64	6.084	0.411	5.278	6.890	●
NH White Male 65 and Up	3.068	0.547	1.996	4.140	▲
NH White Female Under 5	7.600	1.755	4.161	11.039	▲
NH White Female 5 to 17	8.755	1.321	6.165	11.345	▲
NH White Female 18 to 64	7.473	0.483	6.526	8.421	●
NH White Female 65 and Up	5.042	0.517	4.029	6.056	●
NH Black Male Under 5	37.935	5.328	27.492	48.378	▲
NH Black Male 5 to 17	34.134	3.202	27.858	40.409	●
NH Black Male 18 to 64	15.311	0.983	13.385	17.237	●
NH Black Male 65 and Up	13.106	2.789	7.640	18.572	▲
NH Black Female Under 5	38.092	4.866	28.556	47.629	▲
NH Black Female 5 to 17	34.981	3.098	28.909	41.053	●
NH Black Female 18 to 64	22.784	1.251	20.332	25.236	●
NH Black Female 65 and Up	23.410	2.795	17.933	28.888	●
NH Asian Male Under 5	10.529	4.606	1.502	19.556	◆
NH Asian Male 5 to 17	6.730	2.172	2.473	10.986	▲
NH Asian Male 18 to 64	6.896	1.032	4.873	8.919	▲
NH Asian Male 65 and Up	11.960	3.948	4.221	19.698	▲
NH Asian Female Under 5	4.631	1.859	0.988	8.274	◆
NH Asian Female 5 to 17	10.613	3.443	3.864	17.362	▲
NH Asian Female 18 to 64	9.227	1.116	7.039	11.415	▲
NH Asian Female 65 and Up	9.947	3.187	3.701	16.194	▲
NH Other Male Under 5	21.034	7.422	6.487	35.580	▲
NH Other Male 5 to 17	12.394	3.728	5.086	19.701	▲
NH Other Male 18 to 64	11.945	2.854	6.352	17.538	▲
NH Other Male 65 and Up	21.293	13.169	-4.518	47.104	◆
NH Other Female Under 5	11.722	5.863	0.231	23.214	◆
NH Other Female 5 to 17	14.113	4.223	5.836	22.390	▲
NH Other Female 18 to 64	15.118	2.897	9.439	20.796	▲
NH Other Female 65 and Up	3.403	3.382	-3.226	10.032	◆
Hispanic Male Under 5	34.696	3.129	28.563	40.830	●
Hispanic Male 5 to 17	32.475	2.004	28.546	36.403	●
Hispanic Male 18 to 64	16.150	1.030	14.132	18.169	●
Hispanic Male 65 and Up	18.625	3.691	11.392	25.859	▲
Hispanic Female Under 5	35.772	2.873	30.141	41.403	●
Hispanic Female 5 to 17	29.142	1.679	25.850	32.433	●
Hispanic Female 18 to 64	24.611	1.180	22.299	26.924	●
Hispanic Female 65 and Up	15.593	2.852	10.004	21.182	▲

Table 50. Reliability Indicators for Number of Persons in Poverty by Race / Ethnicity, Sex, and Age, 2010

Race / Ethnicity, Sex, & Age	Total	Standard			Reliability
		Error	Lower Bound	Upper Bound	
NH White Male Under 5	4,178	843.28	2,525.20	5,830.80	▲
NH White Male 5 to 17	10,827	1,650.50	7,592.08	14,061.92	▲
NH White Male 18 to 64	32,124	2,162.54	27,885.51	36,362.49	●
NH White Male 65 and Up	2,893	516.13	1,881.40	3,904.61	▲
NH White Female Under 5	3,261	753.52	1,784.12	4,737.88	▲
NH White Female 5 to 17	10,696	1,616.74	7,527.24	13,864.76	▲
NH White Female 18 to 64	40,274	2,594.98	35,187.94	45,360.06	●
NH White Female 65 and Up	6,300	647.24	5,031.44	7,568.56	●
NH Black Male Under 5	8,865	1,223.44	6,467.10	11,262.91	▲
NH Black Male 5 to 17	22,401	2,121.33	18,243.27	26,558.73	●
NH Black Male 18 to 64	27,647	1,772.09	24,173.76	31,120.24	●
NH Black Male 65 and Up	2,051	443.62	1,181.53	2,920.47	▲
NH Black Female Under 5	9,085	1,187.77	6,757.01	11,412.99	▲
NH Black Female 5 to 17	21,720	1,926.76	17,943.62	25,496.38	●
NH Black Female 18 to 64	49,665	2,759.38	44,256.71	55,073.29	●
NH Black Female 65 and Up	6,038	729.72	4,607.77	7,468.23	▲
NH Asian Male Under 5	914	397.84	134.26	1,693.74	◆
NH Asian Male 5 to 17	1,449	456.97	553.36	2,344.64	▲
NH Asian Male 18 to 64	5,312	792.50	3,758.73	6,865.27	▲
NH Asian Male 65 and Up	794	265.45	273.73	1,314.27	▲
NH Asian Female Under 5	417	166.35	90.97	743.03	▲
NH Asian Female 5 to 17	2,204	708.90	814.57	3,593.43	▲
NH Asian Female 18 to 64	7,421	910.46	5,636.54	9,205.46	▲
NH Asian Female 65 and Up	795	255.84	293.57	1,296.43	▲
NH Other Male Under 5	1,339	510.56	338.33	2,339.67	▲
NH Other Male 5 to 17	1,430	429.59	588.03	2,271.98	▲
NH Other Male 18 to 64	2,608	629.31	1,374.58	3,841.42	▲
NH Other Male 65 and Up	369	261.29	(143.13)	881.13	◆
NH Other Female Under 5	550	298.08	(34.22)	1,134.23	◆
NH Other Female 5 to 17	1,971	652.20	692.72	3,249.29	▲
NH Other Female 18 to 64	3,299	684.62	1,957.16	4,640.84	▲
NH Other Female 65 and Up	90	89.49	(85.39)	265.39	◆
Hispanic Male Under 5	22,256	2,017.77	18,301.24	26,210.76	●
Hispanic Male 5 to 17	48,087	2,963.18	42,279.28	53,894.72	●
Hispanic Male 18 to 64	56,758	3,614.01	49,674.67	63,841.33	●
Hispanic Male 65 and Up	2,810	570.85	1,691.16	3,928.84	▲
Hispanic Female Under 5	22,349	1,768.92	18,881.99	25,816.01	●
Hispanic Female 5 to 17	41,602	2,488.88	36,723.89	46,480.11	●
Hispanic Female 18 to 64	78,218	3,772.12	70,824.79	85,611.21	●
Hispanic Female 65 and Up	2,807	518.36	1,791.03	3,822.97	▲



Table 51. Reliability Indicators for Percent of Persons in Poverty by Household Type and Race / Ethnicity, 2010

Household Type & Race / Ethnicity	Percent	Standard Error	Lower Bound	Upper Bound	Reliability
Married Couple Non-Hispanic White	3.243	0.440	2.381	4.104	▲
Married Couple Non-Hispanic Black	9.836	1.515	6.867	12.805	▲
Married Couple Non-Hispanic Asian	5.810	1.172	3.513	8.108	▲
Married Couple Non-Hispanic Other	7.570	2.237	3.187	11.954	▲
Married Couple Hispanic	20.322	1.330	17.716	22.928	●
Male-Headed, No Wife Non-Hispanic White	12.078	2.425	7.324	16.832	▲
Male-Headed, No Wife Non-Hispanic Black	25.217	4.385	16.624	33.811	▲
Male-Headed, No Wife Non-Hispanic Asian	6.641	5.033	-3.223	16.505	◆
Male-Headed, No Wife Non-Hispanic Other	19.859	8.582	3.038	36.680	◆
Male-Headed, No Wife Hispanic	21.899	2.596	16.811	26.988	●
Female-Headed, No Husband Non-Hispanic White	15.941	1.742	12.527	19.355	●
Female-Headed, No Husband Non-Hispanic Black	40.044	2.342	35.455	44.634	●
Female-Headed, No Husband Non-Hispanic Asian	17.112	5.228	6.866	27.359	▲
Female-Headed, No Husband Non-Hispanic Other	22.256	5.414	11.644	32.867	▲
Female-Headed, No Husband Hispanic	43.575	2.358	38.954	48.195	●
Male Non-Family Non-Hispanic White	13.650	1.238	11.223	16.077	●
Male Non-Family Non-Hispanic Black	20.264	2.336	15.685	24.842	●
Male Non-Family Non-Hispanic Asian	18.262	4.001	10.420	26.103	▲
Male Non-Family Non-Hispanic Other	27.302	6.649	14.270	40.334	▲
Male Non-Family Hispanic	17.055	1.919	13.294	20.815	●
Female Non-Family Non-Hispanic White	12.873	1.240	10.442	15.304	●
Female Non-Family Non-Hispanic Black	26.326	1.976	22.453	30.199	●
Female Non-Family Non-Hispanic Asian	33.997	7.633	19.036	48.958	▲
Female Non-Family Non-Hispanic Other	20.327	4.519	11.470	29.184	▲
Female Non-Family Hispanic	20.740	2.583	15.677	25.803	▲

Table 52. Reliability Indicators for Number of Persons in Poverty by Household Type and Race / Ethnicity, 2010

Household Type & Race / Ethnicity	Total	Standard Error	Lower Bound	Upper Bound	Reliability
Married Couple Non-Hispanic White	34,737	4,753.55	25,420.21	44,053.79	▲
Married Couple Non-Hispanic Black	23,305	3,773.18	15,909.71	30,700.29	▲
Married Couple Non-Hispanic Asian	10,685	2,159.03	6,453.38	14,916.62	▲
Married Couple Non-Hispanic Other	3,631	1,160.41	1,356.64	5,905.36	▲
Married Couple Hispanic	143,956	9,779.34	124,788.80	163,123.20	●
Male-Headed, No Wife Non-Hispanic White	7,082	1,499.60	4,142.85	10,021.15	▲
Male-Headed, No Wife Non-Hispanic Black	11,009	2,196.42	6,704.10	15,313.90	▲
Male-Headed, No Wife Non-Hispanic Asian	654	453.27	(234.39)	1,542.39	◆
Male-Headed, No Wife Non-Hispanic Other	1,519	740.02	68.58	2,969.42	◆
Male-Headed, No Wife Hispanic	25,325	3,630.09	18,210.16	32,439.84	▲
Female-Headed, No Husband Non-Hispanic White	28,440	3,603.51	21,377.25	35,502.75	▲
Female-Headed, No Husband Non-Hispanic Black	87,511	6,238.76	75,283.25	99,738.75	●
Female-Headed, No Husband Non-Hispanic Asian	2,848	893.37	1,097.03	4,598.97	▲
Female-Headed, No Husband Non-Hispanic Other	3,761	1,048.14	1,706.68	5,815.32	▲
Female-Headed, No Husband Hispanic	89,927	6,650.49	76,892.29	102,961.70	●
Male Non-Family Non-Hispanic White	19,677	1,973.92	15,808.20	23,545.80	●
Male Non-Family Non-Hispanic Black	8,814	1,147.97	6,564.03	11,063.97	▲
Male Non-Family Non-Hispanic Asian	2,521	600.39	1,344.25	3,697.75	▲
Male Non-Family Non-Hispanic Other	1,527	448.71	647.54	2,406.46	▲
Male Non-Family Hispanic	9,715	1,378.31	7,013.56	12,416.44	▲
Female Non-Family Non-Hispanic White	19,591	1,994.62	15,681.61	23,500.39	●
Female Non-Family Non-Hispanic Black	15,368	1,347.91	12,726.14	18,009.86	●
Female Non-Family Non-Hispanic Asian	2,511	618.26	1,299.23	3,722.77	▲
Female Non-Family Non-Hispanic Other	1,218	466.52	303.63	2,132.37	▲
Female Non-Family Hispanic	5,659	895.04	3,904.75	7,413.25	▲

Table 53. Reliability Indicators for Percent of Households in Poverty, 2010

Year	Percent	Standard Error	Lower Bound	Upper Bound	Reliability
2005	12.109	0.394	11.337	12.880	●
2006	11.479	0.374	10.746	12.212	●
2007	11.566	0.328	10.923	12.209	●
2008	12.204	0.339	11.539	12.869	●
2009	12.908	0.391	12.142	13.674	●
2010	12.664	0.357	11.965	13.363	●

Table 54. Reliability Indicators for Number of Households in Poverty, 2010

Year	Total	Standard			Reliability
		Error	Lower Bound	Upper Bound	
2005	144,698	4,730.87	135,425.70	153,970.30	●
2006	140,253	4,558.43	131,318.60	149,187.40	●
2007	143,588	4,134.49	135,484.60	151,691.40	●
2008	155,259	4,355.99	146,721.40	163,796.60	●
2009	165,585	5,152.21	155,486.80	175,683.20	●
2010	164,620	4,695.78	155,416.40	173,823.60	●

Table 55. Reliability Indicators for Percent of Households in Poverty by Household Type, 2010

Household Type	Percent	Standard			Reliability
		Error	Lower Bound	Upper Bound	
Married Couple	7.159	0.372	6.430	7.889	●
Male-Headed, No Wife	14.678	1.621	11.502	17.854	●
Female-Headed, No Husband	29.557	1.325	26.960	32.153	●
Male-Headed, Non-Family	12.171	0.758	10.684	13.657	●
Female-Headed, Non-Family	14.711	0.836	13.072	16.349	●

Table 56. Reliability Indicators for Number of Households in Poverty by Household Type, 2010

Household Type	Total	Standard			Reliability
		Error	Lower Bound	Upper Bound	
Married Couple	46,028	2,477.40	41,172.38	50,883.62	●
Male-Headed, No Wife	9,724	1,067.91	7,630.94	11,817.06	●
Female-Headed, No Husband	53,738	2,846.94	48,158.11	59,317.89	●
Male-Headed, Non-Family	24,077	1,684.46	20,775.52	27,378.48	●
Female-Headed, Non-Family	31,053	1,796.64	27,531.66	34,574.34	●

Table 57. Reliability Indicators for Percent of Households in Poverty by Housing Structure Type, 2010

Structure Type	Percent	Standard			Reliability
		Error	Lower Bound	Upper Bound	
Mobile Home / Trailer	25.390	3.017	19.478	31.303	●
Single Family - Detached	8.271	0.348	7.589	8.953	●
Single Family - Attached	11.221	1.766	7.760	14.683	▲
Apartments - Less than 10	22.839	1.231	20.427	25.252	●
Apartments - 10 to 49	21.226	1.263	18.750	23.702	●
Apartments - 50 or More	17.745	1.430	14.942	20.549	●
Other	15.309	12.086	-8.379	38.996	◆

Table 58. Reliability Indicators for Number of Households in Poverty by Housing Structure Type, 2010

Structure Type	Total	Standard		Reliability	
		Error	Lower Bound		Upper Bound
Mobile Home / Trailer	7,468	1,038.86	5,431.87	9,504.13	▲
Single Family - Detached	68,460	3,021.89	62,537.21	74,382.79	●
Single Family - Attached	5,164	854.61	3,489.00	6,839.00	▲
Apartments - Less than 10	32,187	1,903.76	28,455.70	35,918.30	●
Apartments - 10 to 49	36,304	2,247.00	31,899.97	40,708.03	●
Apartments - 50 or More	14,975	1,288.56	12,449.46	17,500.54	●
Other	62	63.18	(61.84)	185.84	◆

Table 59. Reliability Indicators for Percent of Households in Poverty by Household Type and Race / Ethnicity, 2010

Household Type & Race / Ethnicity	Percent	Standard		Reliability	
		Error	Lower Bound		Upper Bound
Married Couple Non-Hispanic White	2.427	0.316	1.806	3.047	▲
Married Couple Non-Hispanic Black	7.764	1.095	5.617	9.910	▲
Married Couple Non-Hispanic Asian	5.615	1.182	3.299	7.932	▲
Married Couple Non-Hispanic Other	7.284	2.541	2.304	12.263	▲
Married Couple Hispanic	18.511	1.267	16.027	20.995	●
Male-Headed, No Wife Non-Hispanic White	7.709	1.975	3.837	11.580	▲
Male-Headed, No Wife Non-Hispanic Black	23.065	4.555	14.136	31.993	▲
Male-Headed, No Wife Non-Hispanic Asian	3.238	3.564	-3.747	10.222	◆
Male-Headed, No Wife Non-Hispanic Other	18.741	13.436	-7.592	45.075	◆
Male-Headed, No Wife Hispanic	16.417	2.727	11.072	21.763	▲
Female-Headed, No Husband Non-Hispanic White	14.103	1.636	10.896	17.311	●
Female-Headed, No Husband Non-Hispanic Black	35.376	2.284	30.900	39.853	●
Female-Headed, No Husband Non-Hispanic Asian	19.654	6.790	6.345	32.963	▲
Female-Headed, No Husband Non-Hispanic Other	31.380	8.062	15.579	47.181	▲
Female-Headed, No Husband Hispanic	42.452	2.767	37.029	47.875	●
Male Non-Family Non-Hispanic White	9.895	1.005	7.925	11.866	●
Male Non-Family Non-Hispanic Black	17.302	2.072	13.240	21.364	●
Male Non-Family Non-Hispanic Asian	19.884	4.447	11.168	28.600	▲
Male Non-Family Non-Hispanic Other	19.693	7.189	5.603	33.782	▲
Male Non-Family Hispanic	10.726	1.910	6.982	14.469	▲
Female Non-Family Non-Hispanic White	10.316	1.009	8.338	12.293	●
Female Non-Family Non-Hispanic Black	23.796	2.145	19.591	28.000	●
Female Non-Family Non-Hispanic Asian	29.121	7.996	13.450	44.792	▲
Female Non-Family Non-Hispanic Other	17.071	4.778	7.707	26.435	▲
Female Non-Family Hispanic	15.303	3.019	9.385	21.221	▲

Table 60. Reliability Indicators for Number of Households in Poverty by Household Type and Race / Ethnicity, 2010

Household Type & Race / Ethnicity	Total	Standard Error	Lower Bound	Upper Bound	Reliability
Married Couple Non-Hispanic White	8,753	1,160.51	6,478.44	11,027.56	▲
Married Couple Non-Hispanic Black	5,448	761.06	3,956.35	6,939.65	▲
Married Couple Non-Hispanic Asian	2,715	589.51	1,559.59	3,870.41	▲
Married Couple Non-Hispanic Other	773	279.79	224.62	1,321.38	▲
Married Couple Hispanic	28,339	2,066.35	24,289.03	32,388.97	●
Male-Headed, No Wife Non-Hispanic White	1,572	403.41	781.33	2,362.67	▲
Male-Headed, No Wife Non-Hispanic Black	3,176	695.44	1,812.96	4,539.04	▲
Male-Headed, No Wife Non-Hispanic Asian	80	84.35	(85.32)	245.32	◆
Male-Headed, No Wife Non-Hispanic Other	274	229.39	(175.60)	723.60	◆
Male-Headed, No Wife Hispanic	4,622	853.05	2,950.06	6,293.94	▲
Female-Headed, No Husband Non-Hispanic White	8,632	1,127.31	6,422.52	10,841.48	▲
Female-Headed, No Husband Non-Hispanic Black	22,556	1,754.55	19,117.14	25,994.86	●
Female-Headed, No Husband Non-Hispanic Asian	1,079	390.20	314.22	1,843.78	▲
Female-Headed, No Husband Non-Hispanic Other	937	285.54	377.36	1,496.64	▲
Female-Headed, No Husband Hispanic	20,534	1,630.46	17,338.37	23,729.63	●
Male Non-Family Non-Hispanic White	11,077	1,203.77	8,717.65	13,436.35	●
Male Non-Family Non-Hispanic Black	6,387	824.67	4,770.67	8,003.33	▲
Male Non-Family Non-Hispanic Asian	2,054	513.18	1,048.19	3,059.81	▲
Male Non-Family Non-Hispanic Other	910	395.34	135.14	1,684.86	◆
Male Non-Family Hispanic	3,649	670.35	2,335.14	4,962.87	▲
Female Non-Family Non-Hispanic White	13,414	1,339.78	10,788.08	16,039.92	●
Female Non-Family Non-Hispanic Black	12,118	1,170.31	9,824.25	14,411.76	●
Female Non-Family Non-Hispanic Asian	1,742	518.83	725.12	2,758.88	▲
Female Non-Family Non-Hispanic Other	802	251.51	309.05	1,294.95	▲
Female Non-Family Hispanic	2,977	585.73	1,828.99	4,125.01	▲

Table 61. Reliability Indicators for Percent of Households in Poverty by Household Language, 2010

Household Language	Percent	Standard Error	Lower Bound	Upper Bound	Reliability
English Only	10.434	0.374	9.702	11.167	●
Spanish	20.827	1.013	18.841	22.813	●
Other Indo-European Languages	8.799	1.488	5.884	11.715	▲
Asian and Pacific Islander Languages	9.717	1.475	6.825	12.608	▲
Other Languages	12.623	2.400	7.920	17.326	▲

Table 62. Reliability Indicators for Number of Households in Poverty by Household Language, 2010

Household Language	Total	Standard			Reliability
		Error	Lower Bound	Upper Bound	
English Only	93,271	3,472.91	86,464.22	100,077.80	●
Spanish	59,559	3,035.29	53,609.94	65,508.06	●
Other Indo-European Languages	4,207	735.44	2,765.57	5,648.43	▲
Asian and Pacific Islander Languages	5,138	832.35	3,506.62	6,769.38	▲
Other Languages	2,445	524.35	1,417.30	3,472.70	▲

Table 63. Reliability Indicators for Percent of Households in Poverty by Family and Employment Status, 2010

Family & Employment Status	Percent	Standard			Reliability
		Error	Lower Bound	Upper Bound	
Married Couple - Both in LF	3.457	0.326	2.817	4.096	●
Married Couple - One in LF	12.910	0.885	11.176	14.644	●
Married Couple - Not in LF	10.149	1.171	7.854	12.445	●
Male-Headed - in LF	10.877	1.506	7.925	13.829	▲
Male-Headed - Not in LF	34.884	5.528	24.050	45.718	▲
Female-Headed - In LF	23.296	1.383	20.585	26.008	●
Female-Headed - Not in LF	49.359	2.920	43.636	55.082	●

Table 64. Reliability Indicators for Number of Households in Poverty by Family and Employment Status, 2010

Family & Employment Status	Total	Standard			Reliability
		Error	Lower Bound	Upper Bound	
Married Couple - Both in LF	12,890	1,228.02	10,483.13	15,296.87	●
Married Couple - One in LF	26,794	1,983.68	22,906.05	30,681.95	●
Married Couple - Not in LF	6,344	788.56	4,798.46	7,889.54	▲
Male-Headed - in LF	6,065	889.43	4,321.76	7,808.24	▲
Male-Headed - Not in LF	3,659	697.45	2,292.02	5,025.98	▲
Female-Headed - In LF	32,181	2,139.26	27,988.12	36,373.88	●
Female-Headed - Not in LF	21,557	1,971.40	17,693.13	25,420.87	●

Table 65. Reliability Indicators for Percent of Households in Poverty by Grandparent-Headed Status, 2010

Grandparent Households	Percent	Standard			Reliability
		Error	Lower Bound	Upper Bound	
Non-Grandparent Headed	12.595	0.354	11.902	13.288	●
Grandparent Headed	26.222	5.498	15.445	36.999	▲

Table 66. Reliability Indicators for Number of Households in Poverty by Grandparent-Headed Status, 2010

Grandparent Households	Total	Standard			Reliability
		Error	Lower Bound	Upper Bound	
Non-Grandparent Headed	162,898	4,635.84	153,811.90	171,984.10	●
Grandparent Headed	1,722	416.26	906.14	2,537.86	▲

Table 67. Reliability Indicators for Percent of Households in Poverty by Multigenerational Status, 2010

Multigenerational Status	Percent	Standard Error	Lower Bound	Upper Bound	Reliability
<b>Multigenerational</b>	12.417	0.361	11.710	13.123	●
<b>Non-Multigenerational</b>	17.446	1.808	13.903	20.989	●

Table 68. Reliability Indicators for Number of Households in Poverty by Multigenerational Status, 2010

Multigenerational Status	Total	Standard Error	Lower Bound	Upper Bound	Reliability
<b>Multigenerational</b>	153,473	4,555.22	144,544.90	162,401.10	●
<b>Non-Multigenerational</b>	11,147	1,249.26	8,698.49	13,595.51	●



**The Institute for Urban Policy Research  
at The University of Texas at Dallas**

**800 West Campbell Road, GR20  
Richardson, Texas 75080-3021**

**(972)883-5430 voice (972)883-5431 facsimile**

Visit us on the Web! <http://iupr.utdallas.edu>

