

Data Empowered Community Development

NEO CANDO 2010+

Claudia Coulton, Ph.D.

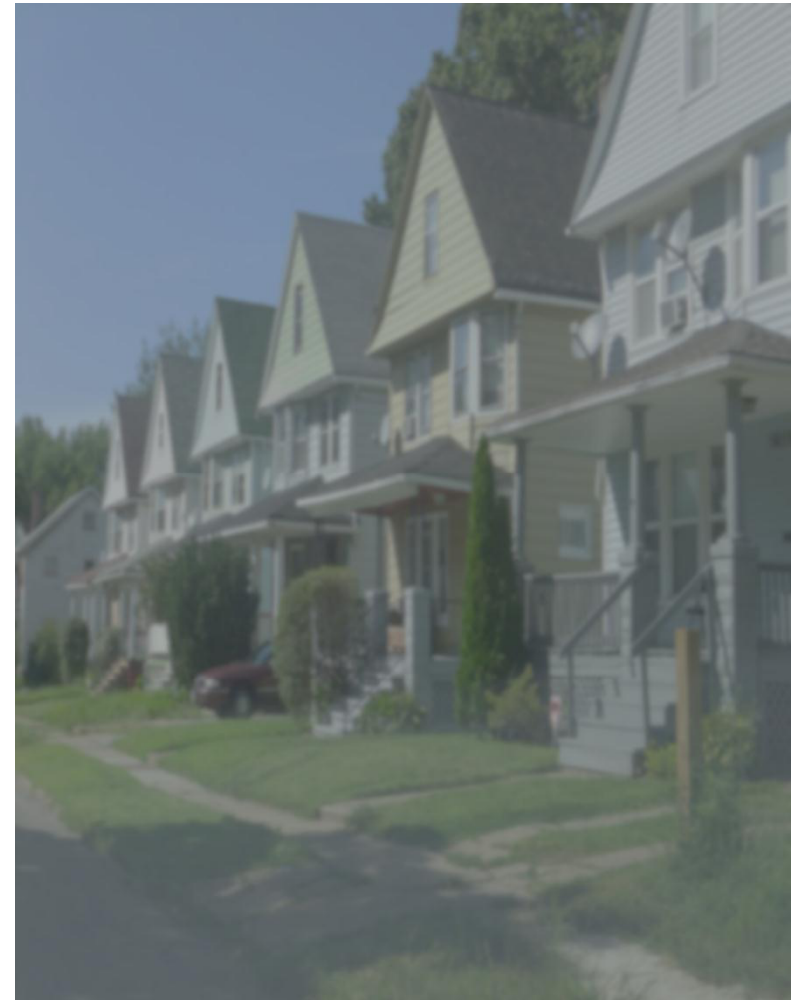
Center on Urban Poverty and Community Development

Mandel School of Applied Social Sciences

Case Western Reserve University

The Role of the Mandel School of Applied Social Sciences in Community Development

- An almost 100 year legacy of applied research and civic impact
- Today: Community and Social Development concentration has a focus on skill-building and community engagement
- Goal: Social change leaders who can work across sectors and at all levels



Community Development at MSASS

Asset building that improves the quality of life among residents of low- to moderate-income communities, where communities are neighborhoods...

Ferguson and Dickens, Urban Problems and Community Development, 1999

Our program focuses on the five categories of capital to enhance community development:

- physical, financial, human, social, political

Center on Urban Poverty and Community Development

The Research Focus:

Neighborhood as a fundamental interface between individuals and systemic forces that drive opportunities.

Specific Aims:

Through local engagement-- aims to have direct impact and build knowledge of what works for community change .

Through national partnerships , -- aims to bring community to the forefront of efforts to address social disadvantage.



A creative team of faculty, staff, and students with diverse set of skills

Community Driven



THE GEORGE GUND FOUNDATION



WILLIAM J. AND DOROTHY K.



Collinwood & Nottingham Villages Development Corporation
15614 St. Clair Ave...Cleveland, Ohio 44110
Phone: 216-383-9772...Fax: 216-531-8459



NEO CANDO 2010+

NEO CANDO 2010+ in a nutshell...

- An integrated data system covering 4.2 million people in 17 counties across northeast Ohio
- Enables rapid exploration of social and economic indicators for 8,000 registered users including policy-makers, community developers, and researchers
- Gives organizations of all sizes access to high-quality statistics about the areas they serve

Past and Present

NEO CANDO has been evolving since 1992. Our latest version, NEO CANDO 2010+, is a major leap forward...

- Redesigned interface makes queries easier to build and faster to run
- First step analyses, like percent difference, can be performed on the fly in the tool
- Fast, interactive mapping backed by Google Maps and Google Fusion Tables

There's Got to be a Better Way!

HUD.GOV Geographical Information Systems

Home Mortgage Disclosure Act FFIEC

FFIEC Main | Disclaimer | Privacy Policy | Contact Us | Search

What's New

- The 2012 CRA/HMDA Reporter Newsletter is now available.
- The 2010 Census tract listing that includes the corresponding MSA and Tract Median Family Income data is now available.
- The 2012 HMDA Data Entry Software is now available.
- The 2011 HMDA Data Entry Software Release 2 is now available.
- The HMDA 2011 Loan Application Register (LAR) and Code Sheet have been updated.
- Census 2010 MSA, State, County and Tract listing for calendar year (CY) 2012 CRA/HMDA reporting are now available.
- The 2012 Edits and 2012 File Specifications are now available.
- Press Release announces the availability of 2010 HMDA data. [DOWNLOAD](#) the 2010 HMDA & PMIC raw data.
- 2010 Census Update Notice - MUST READ
- 2011 Edits and 2011 File Specifications have been updated.

Public Data

- Census Data Products
- Central Depository Database*
- Data Order Form
- General Notice Poster
- HMDA Data Products
- On-Line Reports

Reporting Resources

- Data Processing Timeline
- Quick Reference

Background & Purpose

- General Info & Price Data
- Questions
- HMDA Glossary
- Regulation C
- Who Reports Data?

How to File

- A Guide to HMDA Reporting
- CRA/HMDA Newsletter
- Data Entry Software
- Edits
- FAQs
- File Specifications
- Mailing Addresses
- Reporting Forms
- Reporting Procedure Changes

What's New

- HMDA Main
- What's New
- Rate Spread Calculator
- Geocoding System
- FAQs
- Data Order Form
- Aggregate Report
- Disclosure Report
- National Aggregate Rpt
- Census Reports
- Supp C Amendment
- PDF Help
- CRA

E-Mail Alert Sign-Up

Click here to sign up for e-mail notices of website updates.

CUYAHOGA COUNTY

Choose one method of searching for

General Information **Transfer History** **Certified Value**

PARCEL ID: 681-01-004

ADDRESS: 681-01-004

2011 (pay in 2012) TAX

ASSESSED VALUES

LAND VALUE

BUILDING VALUE

TOTAL VALUE

HOMESTEAD VALUE

HALF YEAR CHARGE AMOUNT

GROSS TAX

LESS 930 RED

SUB TOTAL

10% RED. AMOUNT

2.5% RED. AMOUNT

HOMESTEAD RED. AMOUNT

TOTAL ASSESSMENTS

HALF YEAR NET TAXES

TAX BALANCE SUMMARY:

2011 (pay in 2012) CLEVELAND HTS./EAST CLEVELAND

1st half tax

1ST HALF BALANCE

2nd half tax

2ND HALF BALANCE

M203106-Street Lites

1st half SPA fee

1st half tax

1ST HALF BALANCE

2nd half tax

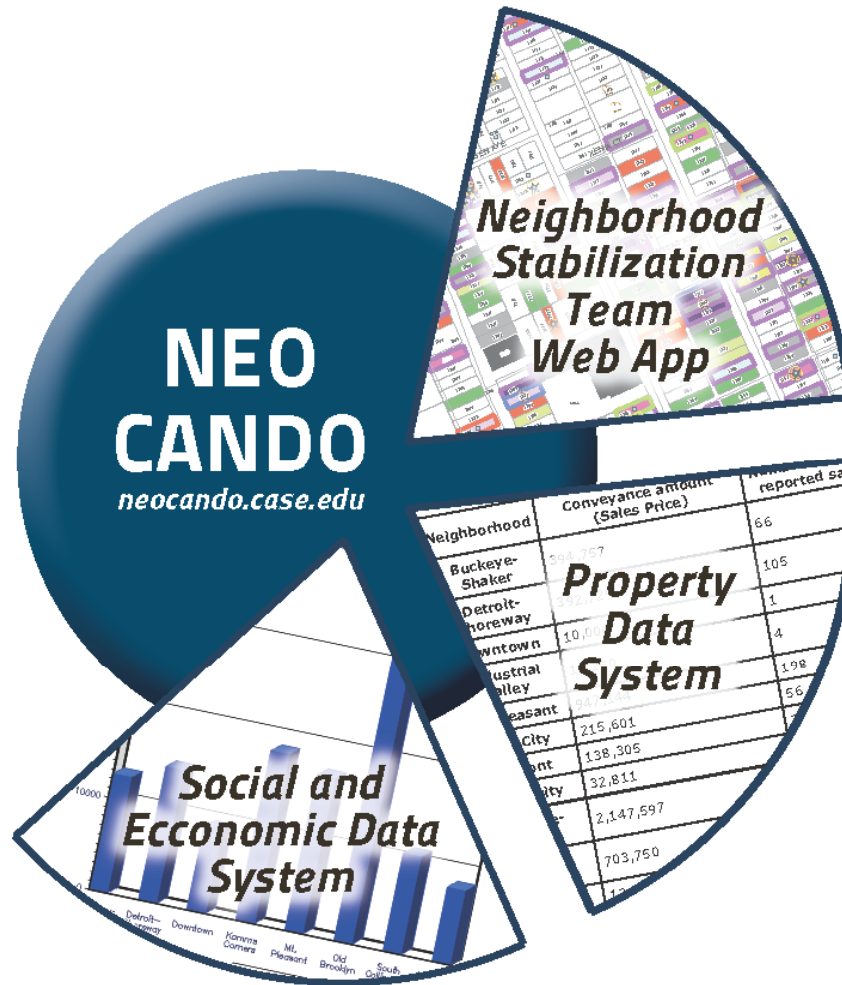
2nd half SPA fee

2ND HALF BALANCE

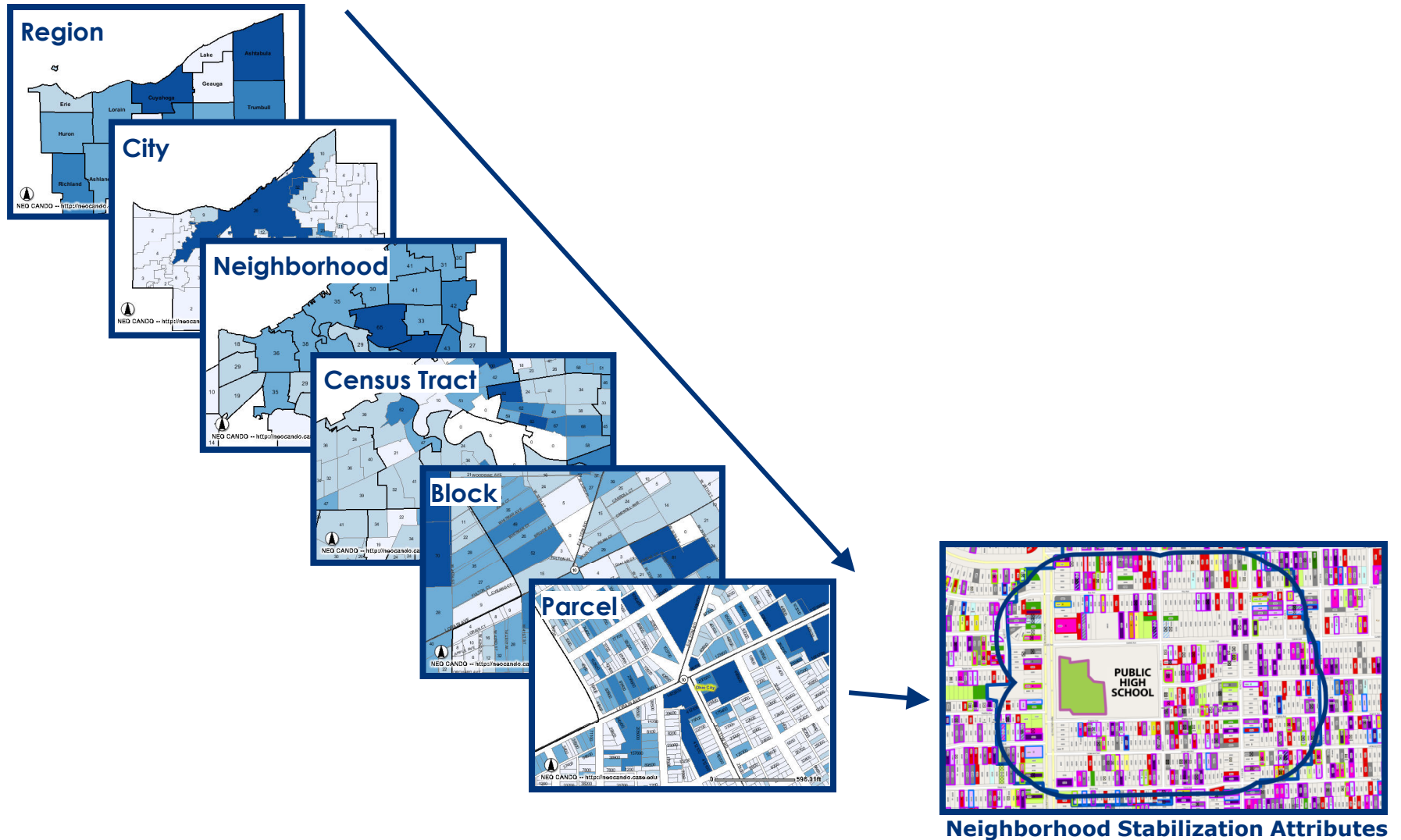
TOTAL BALANCE

CUYAHOGA COUNTY ASSUMES NO LIABILITY OR DISCREPANCIES CONTAINED IN THESE REAL ESTATE ATTORNEY AND PURCHASER

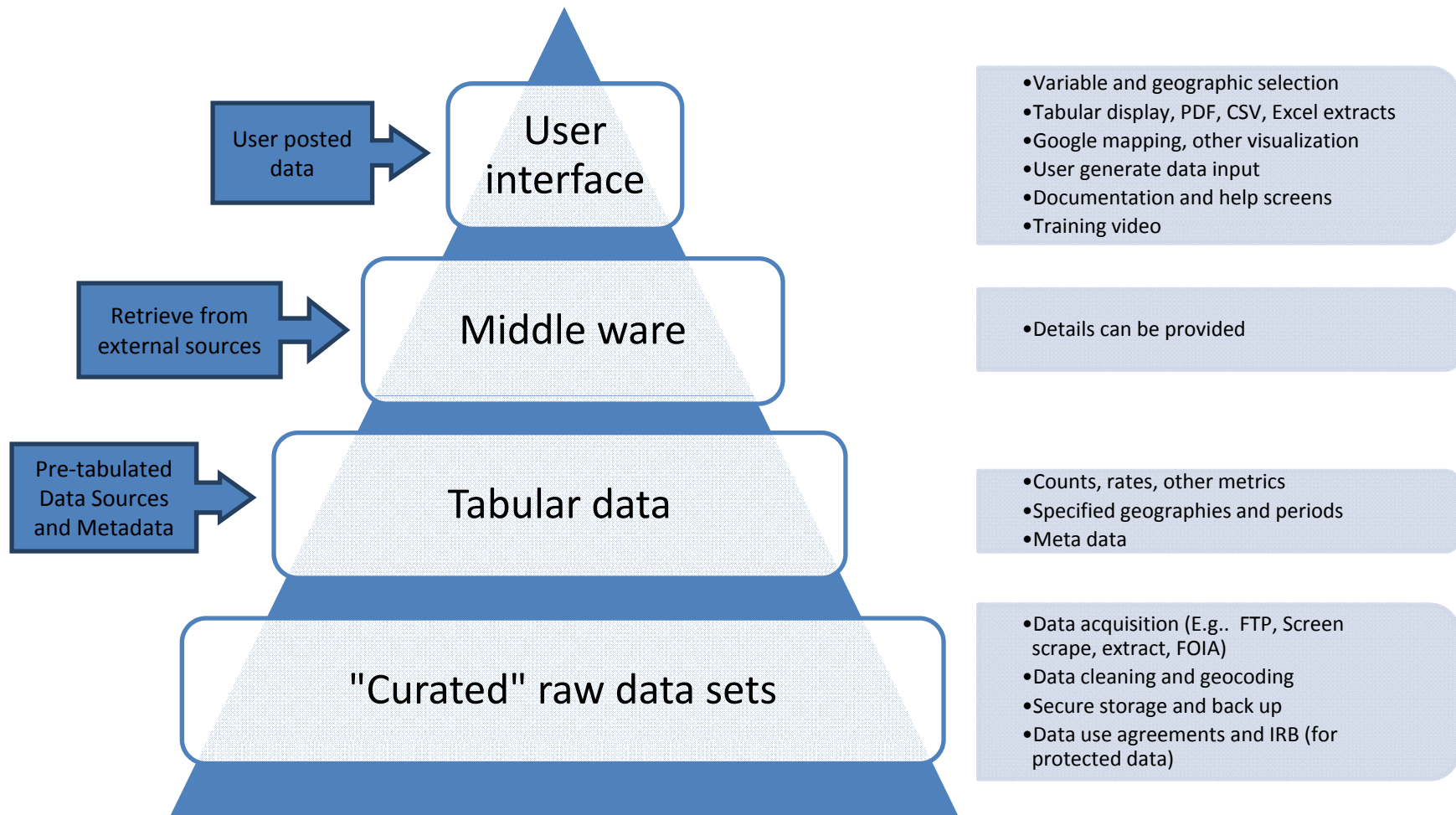
NEO CANDO Suite of Applications



NEO CANDO Nested Geographies

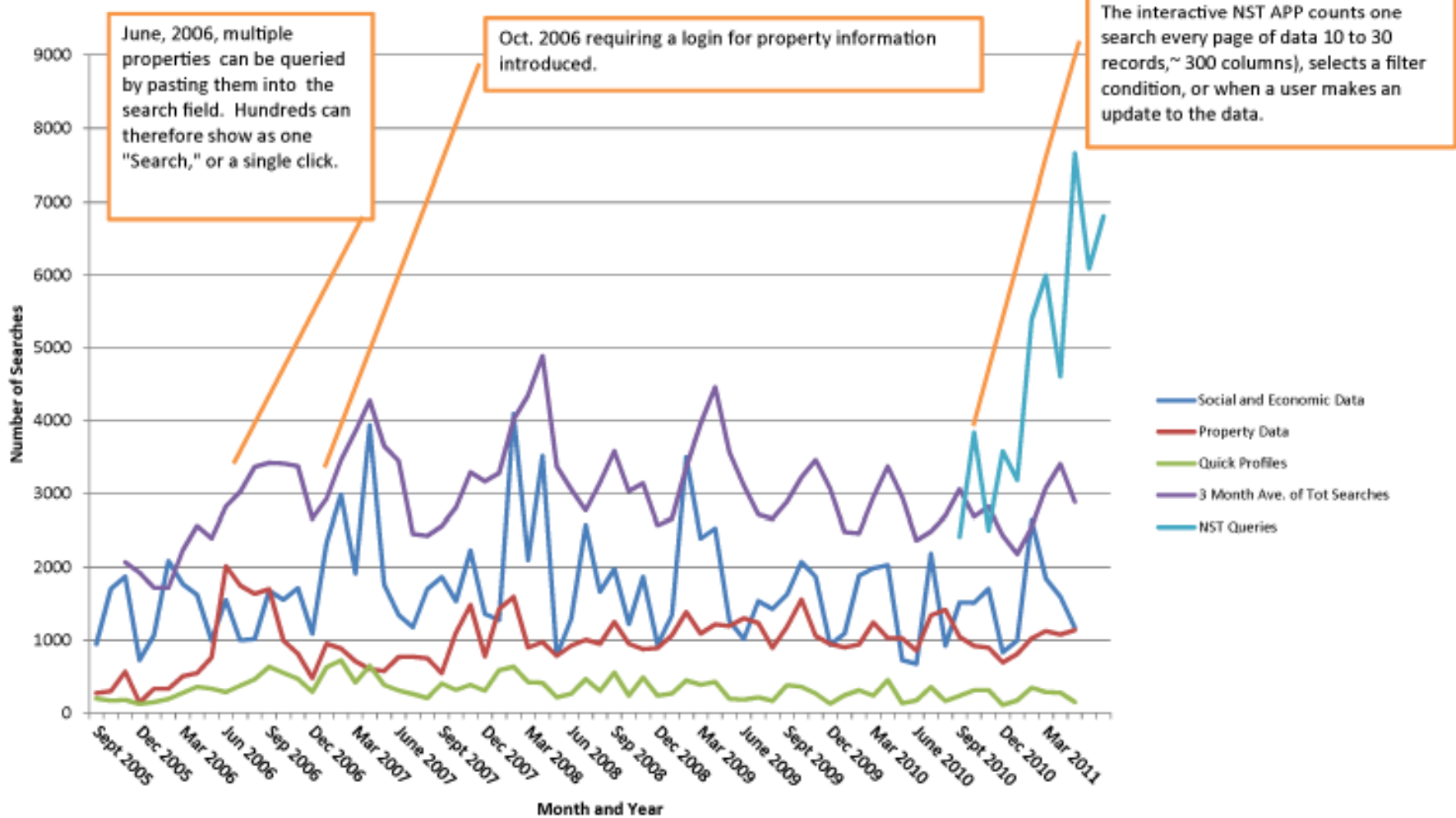


NEO CANDO Schematic



A Highly Utilized Resource

NEO CANDO Searches by Type of Search by Month



A Community Development App

Federal Reserve Board Neighborhood Stabilization:
[Cleveland, Ohio: Data-Driven Decisionmaking](#)

Value to the Community

NEO CANDO saves the Northeast Ohio community duplications of efforts by governments and nonprofit organizations which saves untold hours and of dollars that would be used to find the information each year

- Indicators from dozens of sources and time periods are integrated into a single query screen
- Data are pre-aggregated for relevant service areas such as neighborhoods, wards, and planning districts

NEO CANDO In Practice

NEO CANDO In Practice

DOCUMENTING, ANALYZING, AND SUPPORTING SCHOOL IMPROVEMENT EFFORTS

Joy Brewington



Catalyst Cleveland

Catalyst Cleveland is a monthly, nonprofit newsmagazine created to document, analyze and support school-improvement efforts in the Cleveland public schools. Working at the frontline in education reform, the magazine has been reporting on education reform in the Cleveland Municipal School District for the past eight years. Its 13,000 subscribers include members of the philanthropy community, school teachers and administrators, community leaders in organizations that serve area youth, as well as local and state policy makers.

The magazine has the goal of providing this wide audience of readers with factual, informative reporting which will help in the policy decision making process, and ultimately, to improve the quality of education for youth in Cleveland. Joy Brewington, Data Analyst at Catalyst Cleveland, says that "Knowing data helps shape stories, and stories provide readers with the information they need to form an opinion, make decisions, and take action. The audience wants facts, not theories. They want numbers."

In order to provide Catalyst readers with these facts, and in order to help highlight where real solutions can be implemented, Joy uses NEO CANDO to access a wide variety of social and economic indicators. Using NEO CANDO, Joy has instant access to school enrollment figures as well as factors that affect the communities and individual neighborhoods in which Cleveland youth live, such as child and adolescent poverty rates, family household makeup, crime rates, juvenile delinquency, educational attainment, public assistance and vital statistics, such as low birth rates and infant mortality. In addition to these social and economic indicators, Joy has accessed property characteristic information in order to examine tax abatements and understand their effect on school funding.

Brothers & Sisters is a program that provides support and resources for at-risk youth. It is a partnership between the city of Cleveland and the Cleveland Urban Community Garden Network. The program is designed to help youth develop skills and confidence through gardening and other activities. It is a great way to get youth involved in their community and learn valuable life skills.

Brothers & Sisters is a program that provides support and resources for at-risk youth. It is a partnership between the city of Cleveland and the Cleveland Urban Community Garden Network. The program is designed to help youth develop skills and confidence through gardening and other activities. It is a great way to get youth involved in their community and learn valuable life skills.

Brothers & Sisters is a program that provides support and resources for at-risk youth. It is a partnership between the city of Cleveland and the Cleveland Urban Community Garden Network. The program is designed to help youth develop skills and confidence through gardening and other activities. It is a great way to get youth involved in their community and learn valuable life skills.

Brothers & Sisters is a program that provides support and resources for at-risk youth. It is a partnership between the city of Cleveland and the Cleveland Urban Community Garden Network. The program is designed to help youth develop skills and confidence through gardening and other activities. It is a great way to get youth involved in their community and learn valuable life skills.

Brothers & Sisters is a program that provides support and resources for at-risk youth. It is a partnership between the city of Cleveland and the Cleveland Urban Community Garden Network. The program is designed to help youth develop skills and confidence through gardening and other activities. It is a great way to get youth involved in their community and learn valuable life skills.

Brothers & Sisters is a program that provides support and resources for at-risk youth. It is a partnership between the city of Cleveland and the Cleveland Urban Community Garden Network. The program is designed to help youth develop skills and confidence through gardening and other activities. It is a great way to get youth involved in their community and learn valuable life skills.

Brothers & Sisters is a program that provides support and resources for at-risk youth. It is a partnership between the city of Cleveland and the Cleveland Urban Community Garden Network. The program is designed to help youth develop skills and confidence through gardening and other activities. It is a great way to get youth involved in their community and learn valuable life skills.

Brothers & Sisters is a program that provides support and resources for at-risk youth. It is a partnership between the city of Cleveland and the Cleveland Urban Community Garden Network. The program is designed to help youth develop skills and confidence through gardening and other activities. It is a great way to get youth involved in their community and learn valuable life skills.

Brothers & Sisters is a program that provides support and resources for at-risk youth. It is a partnership between the city of Cleveland and the Cleveland Urban Community Garden Network. The program is designed to help youth develop skills and confidence through gardening and other activities. It is a great way to get youth involved in their community and learn valuable life skills.

Brothers & Sisters is a program that provides support and resources for at-risk youth. It is a partnership between the city of Cleveland and the Cleveland Urban Community Garden Network. The program is designed to help youth develop skills and confidence through gardening and other activities. It is a great way to get youth involved in their community and learn valuable life skills.

Brothers & Sisters is a program that provides support and resources for at-risk youth. It is a partnership between the city of Cleveland and the Cleveland Urban Community Garden Network. The program is designed to help youth develop skills and confidence through gardening and other activities. It is a great way to get youth involved in their community and learn valuable life skills.

Brothers & Sisters is a program that provides support and resources for at-risk youth. It is a partnership between the city of Cleveland and the Cleveland Urban Community Garden Network. The program is designed to help youth develop skills and confidence through gardening and other activities. It is a great way to get youth involved in their community and learn valuable life skills.

Brothers & Sisters is a program that provides support and resources for at-risk youth. It is a partnership between the city of Cleveland and the Cleveland Urban Community Garden Network. The program is designed to help youth develop skills and confidence through gardening and other activities. It is a great way to get youth involved in their community and learn valuable life skills.

Brothers & Sisters is a program that provides support and resources for at-risk youth. It is a partnership between the city of Cleveland and the Cleveland Urban Community Garden Network. The program is designed to help youth develop skills and confidence through gardening and other activities. It is a great way to get youth involved in their community and learn valuable life skills.

NEO CANDO In Practice

PROVIDING CONTEXT TO RESEARCH FINDINGS USING DEMOGRAPHIC INDICATORS

Matt Russell



Center for Health Promotion Research

Healthier Cleveland provides information, resources, and program education residents about the health risks of obesity, poor nutrition, and tobacco use and exposure.

Department of Public Health, the administrator of the Western Reserve University to evaluate one of the program activities of the Steps program, the enhancement of community gardens within Cleveland neighborhoods.

Center for Health Promotion Research Project states that the goals of the Steps to a Healthier Cleveland include "increasing access to fresh and healthy food options and increasing levels of physical activity among residents."

Cleveland Urban Community Garden Network
Steps to a Healthier Cleveland



NEO CANDO In Practice

DOCUMENTING HUNGER TRENDS IN GREATER CLEVELAND

Terry Lenahan



Center for Community Solutions

caused own to

maintain stamps archive.

anning ter for nger in erives

nces: the

ils to the

was obtained through the social and economic indicators data

NEO CANDO.

Using NEO CANDO, Terry was able to obtain the number of individuals

receiving food stamp assistance in all thirty-six of Cleveland's

Statistical Planning Areas, as well as the fifty-eight suburban

communities surrounding the City of Cleveland for the years 2000

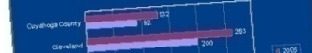
and 2005. Based on this data, Terry was able to determine the rate

of food stamp recipients per 1,000 population for both years, and

then to chart the percentage increases in the number of food stamp

recipients between 2000 and 2005.

Food Stamp Recipients per 1,000 Population
Cuyahoga County, 2000 and 2005



EVALUATING SOCIAL CHANGE, DEVELOPING COMMUNITY

Jeffrey Sugalski



center located at the University College Boulevard. It was not uncommon to carry a handgun in the city made the corner one Cleveland.

neighborhood was the lack of public transportation. Residents are forced to travel more than 30 minutes to get to work or school. It is difficult to buy and bring home groceries without a car.

was undertaken by Burton Bell Carri. It is a means to eliminate the barriers to employment and economic development in the neighborhood.

was undertaken by Burton Bell Carri. It is a means to eliminate the barriers to employment and economic development in the neighborhood.

was undertaken by Burton Bell Carri. It is a means to eliminate the barriers to employment and economic development in the neighborhood.

was undertaken by Burton Bell Carri. It is a means to eliminate the barriers to employment and economic development in the neighborhood.

was undertaken by Burton Bell Carri. It is a means to eliminate the barriers to employment and economic development in the neighborhood.

was undertaken by Burton Bell Carri. It is a means to eliminate the barriers to employment and economic development in the neighborhood.

was undertaken by Burton Bell Carri. It is a means to eliminate the barriers to employment and economic development in the neighborhood.

was undertaken by Burton Bell Carri. It is a means to eliminate the barriers to employment and economic development in the neighborhood.

was undertaken by Burton Bell Carri. It is a means to eliminate the barriers to employment and economic development in the neighborhood.

was undertaken by Burton Bell Carri. It is a means to eliminate the barriers to employment and economic development in the neighborhood.

was undertaken by Burton Bell Carri. It is a means to eliminate the barriers to employment and economic development in the neighborhood.

was undertaken by Burton Bell Carri. It is a means to eliminate the barriers to employment and economic development in the neighborhood.

was undertaken by Burton Bell Carri. It is a means to eliminate the barriers to employment and economic development in the neighborhood.

was undertaken by Burton Bell Carri. It is a means to eliminate the barriers to employment and economic development in the neighborhood.

was undertaken by Burton Bell Carri. It is a means to eliminate the barriers to employment and economic development in the neighborhood.

was undertaken by Burton Bell Carri. It is a means to eliminate the barriers to employment and economic development in the neighborhood.

was undertaken by Burton Bell Carri. It is a means to eliminate the barriers to employment and economic development in the neighborhood.

was undertaken by Burton Bell Carri. It is a means to eliminate the barriers to employment and economic development in the neighborhood.

NEO CANDO In Practice

CREATING REGIONALLY CONNECTED NEIGHBORHOODS OF OPPORTUNITY

Frank Ford



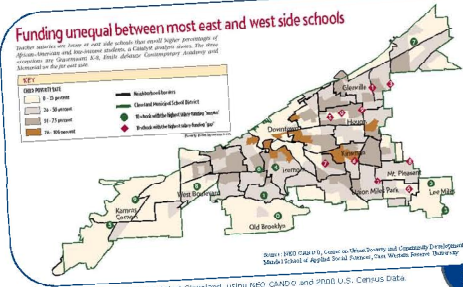
Neighborhood Progress, Inc.

ACCESS TO AFFORDABLE HOUSING AND ECONOMIC OPPORTUNITIES

Peck-Baumgardner



Buckeye Area Development Corp.



The ten schools with the greatest funding gaps and the ten schools with the greatest funding surplus were compared. The funding gap/surplus is the difference a school's average teacher pay is above or below \$60,143, the district average for elementary, K-8, and middle schools.

Using NEO CANDO, Joy was able to determine the child poverty rate for each census tract within the city of Cleveland. After overlaying the location of the gap/surplus schools onto a map, she was able to show that the schools with the greatest funding gaps were located in east-side neighborhoods with high poverty rates, and that schools with funding surpluses were located primarily in neighborhoods with lower poverty rates. To see the full report, visit www.catalyst-cleveland.org

CASE WESTERN RESERVE UNIVERSITY
MANDAL SCHOOL OF APPLIED SOCIAL SCIENCES
CENTER ON URBAN POVERTY AND COMMUNITY DEVELOPMENT
neocando.case.edu

Education
Population
Population
Population
Single Person

her proposa data to fig, 35 Ward 1. i poverty rate households wit 0.1 is 96 per under the age 18. She also found y offenses, the number of juvenile if Cleveland and within Ward 1. Additionally, Rebecca cited DD data showing that the area has a higher percentage of dropouts than the county, as well as data showing that cent of residents in Ward 1 hold a bachelor's degree.

the data from NEO CANDO. Authors

NEO CANDO Fills in the Narrative



Research Summary
April 2012
No. 12-02

Not Dead Yet: The Infill of Cleveland's Urban Core

Rickey Dipariano

A version of this report appeared on the Urban Institute's *MetroTrends Spotlight*.

Summary: Between 2000 and 2010 the City of Cleveland lost over 80,000 people. Observers declared Cleveland was dead. But lost in the overall population numbers is a silver lining that could be the catalyst in the coal mine in reverse: Downtown's population increased by 96%, with the majority of those immigrating aged 22 to 34. As well, the brain gain has spilled over into the adjacent neighborhoods of Tremont and Ohio City, with each area showing significant gains in the 25- to 34-year old cohort between 2000 and 2010.

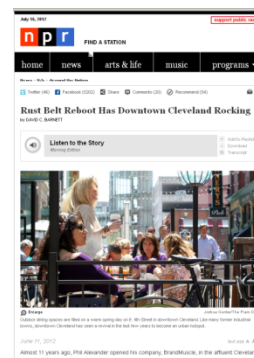
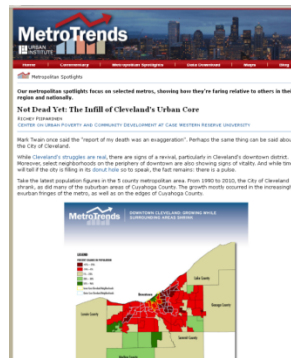
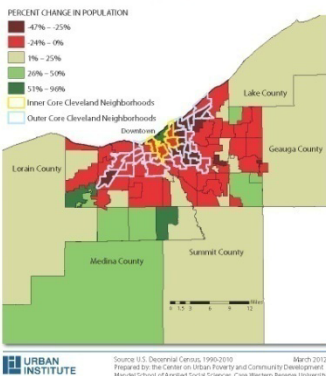
Mark Twain once said the "report of my death was an exaggeration." Perhaps the same thing can be said about the City of Cleveland.

While Cleveland's struggles are real, there are signs of a revival, particularly in Cleveland's downtown district. Moreover, select neighborhoods on the periphery of downtown are also showing signs of vitality. And while time will tell if the city is filling in its donut hole so to speak, the fact remains: there is a pulse.

Take the latest population figures in the 5 county metropolitan area. From 1990 to 2010, the City of Cleveland shrank as did many of the suburban areas of Cuyahoga County. The growth mostly occurred in the increasingly exurban fringes of the metro, as well as on the edges of Cuyahoga County.

Except there is one outlier: downtown Cleveland. Over the last two decades, the neighborhood's population grew 96%, with residential totals increasing from 4,651 to 9,098. It was the single largest spike of any neighborhood, suburb, or county measured for the two decades under study. Downtown residential occupancy rates now stand over 95% and developers are eagerly looking to meet residential demand.

Figure 1: Downtown Cleveland: Growing while surrounding areas shrink



These stories have received:

- Over 9000 Facebook "likes"
- Over 1000 Twitter "tweets"

NEO CANDO Fills in the Narrative



Research Summary
April 2012
No. 12-02

Not Dead Yet: The Infill of Cleveland's Urban Core

Rickey Dipparino

A version of this report appeared on the Urban Institute's MetroTrends Spotlight.

Summary: Between 2000 and 2010 the City of Cleveland lost over 80,000 people. Observers declared Cleveland was dead. But lost in the overall population numbers is a silver lining that could be the canary in the coal mine in reverse: Downtown's population increased by 96%, with the majority of those immigrating aged 22 to 34. As well, the brain gain has spilled over into the adjacent neighborhoods of Tremont and Ohio City, with each area showing significant gains in the 25- to 34-year old cohorts between 2000 and 2010.

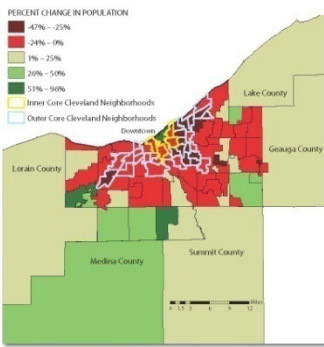
Mark Twain once said the "report of my death was an exaggeration." Perhaps the same thing can be said about the City of Cleveland.

While Cleveland's struggles are real, there are signs of a revival, particularly in Cleveland's downtown district. Moreover, select neighborhoods on the periphery of downtown are also showing signs of vitality. And while time will tell if the city is filling in its donut hole so to speak, the fact remains: there is a pulse.

Take the latest population figures in the 5 county metropolitan area. From 1990 to 2010, the City of Cleveland shrank as did many of the suburban areas of Cuyahoga County. The growth mostly occurred in the increasingly exurban fringes of the metro, as well as on the edges of Cuyahoga County.

Except there is one outlier: downtown Cleveland. Over the last two decades, the neighborhood's population grew 96%, with residential totals increasing from 4,651 to 9,098. It was the single largest spike of any neighborhood, suburb, or county measured for the two decades under study. Downtown residential occupancy rates now stand over 95% and developers are eagerly looking to meet residential demand.

Figure 1: Downtown Cleveland: Growing while surrounding areas shrink



Source: U.S. Decennial Census, 1990-2010
Prepared by the Center on Urban Poverty and Community Development,
Mandel School of Applied Social Sciences, Case Western Reserve University
March 2012



These stories have received:

- Over 9000 Facebook "likes"
- Over 1000 Twitter "tweets"

Driving Program Effectiveness

- Invest in Children
 - Cleveland Botanical Gardens
 - Promise Neighborhoods
 - Cascade Village
 - Choice Neighborhoods
 - East Cleveland Partnership
 - How are They Managing
 - Cleveland Literacy Collective
 - Swanston CWC
- ...and many more over the past two decades.

Center on Urban Poverty and Community Development

.....seeks to address the problems of persistent and concentrated urban poverty and is dedicated to understanding how social and economic changes affect low-income communities and their residents. The Center views the community as a key point of leverage for addressing economic and social disparities and restoring the viability of cities. Located in an urban university the Center uses its research to improve conditions for low-income vulnerable populations and to produce nationally-relevant policy studies.

Center on Urban Poverty and Community Development
Mandel School of Applied Social Sciences
Case Western Reserve University
10900 Euclid Avenue
Cleveland, Ohio 44106-7164

Tel: (216) 368-6946 Fax: (216) 368-5158

E-mail: povcenter@case.edu

Website: <http://povertycenter.case.edu> <http://neocando.case.edu>