



CDAD

Neighborhood Revitalization Strategic Framework



DATA DELIBERATE DECIDE DO DATA DELIBERATE DECIDE DO DATA DELIBERATE DECIDE DO

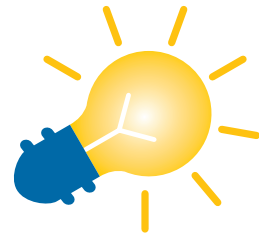
A future for every part of the city.



DATA

Analyze Current Condition

Neighborhood stakeholders use mapped data to validate residential, commercial, and industrial current conditions block-by-block.



DELIBERATE

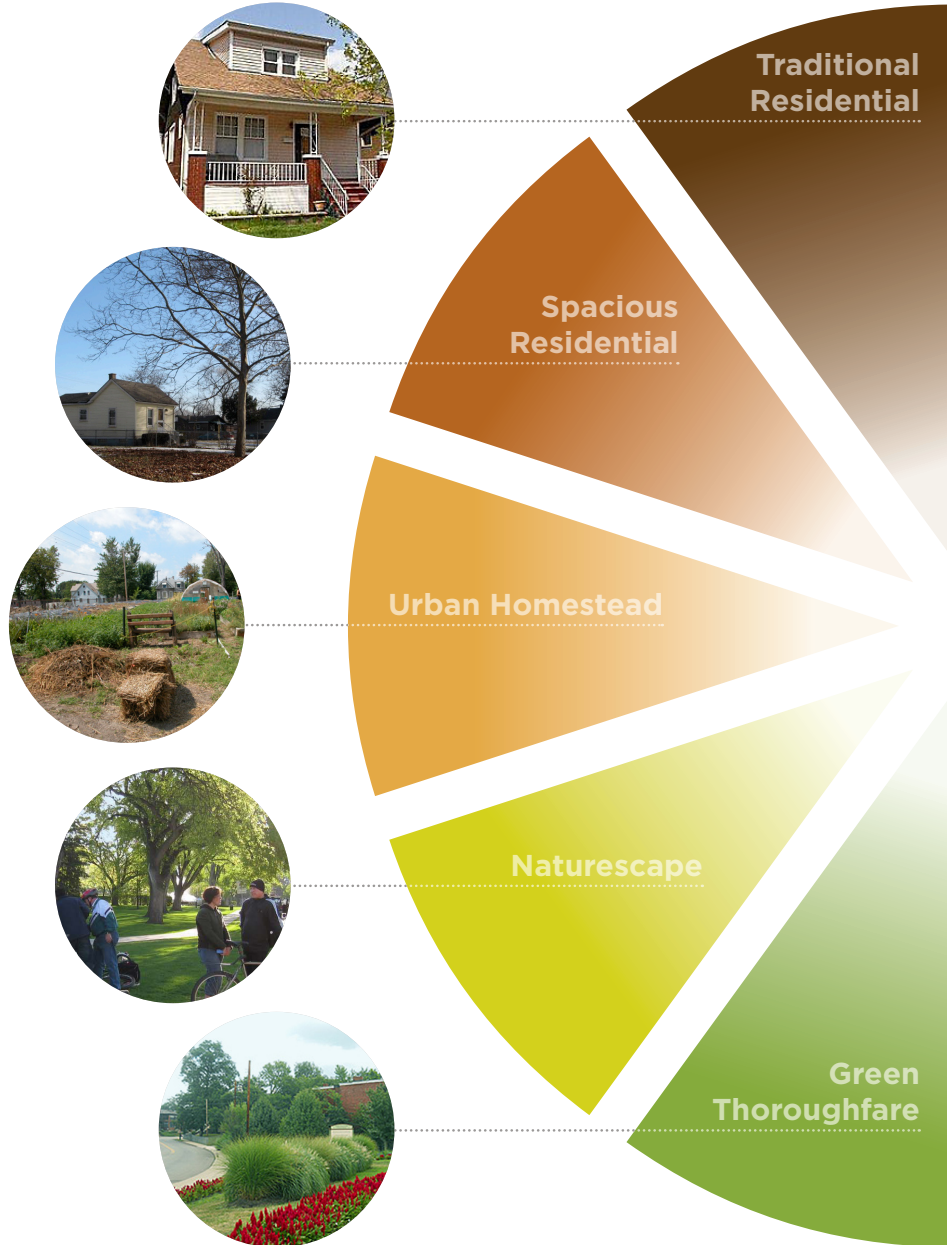
Agree on Future Direction

Based on current condition, neighborhood stakeholders come to agreement on the best, most cost-effective future direction for various groups of blocks in the neighborhood.

OVERVIEW

Both a process and a neighborhood typology, the CDAD Strategic Framework is a tool to help residents envision the future of their neighborhood, describe that vision, and achieve it. Residents must take the lead in creating bold and innovative plans for revitalization. These neighborhood plans must be based on data, realistic, and community-driven. Together, these plans can create a comprehensive vision for every neighborhood across the city.

A sustainable Detroit requires different investment strategies for every neighborhood and the CDAD Strategic Framework is a toolkit designed to be flexible. It allows every neighborhood to be unique and provides for a variety of uses within a single neighborhood.





DECIDE

Develop Strategic Priorities

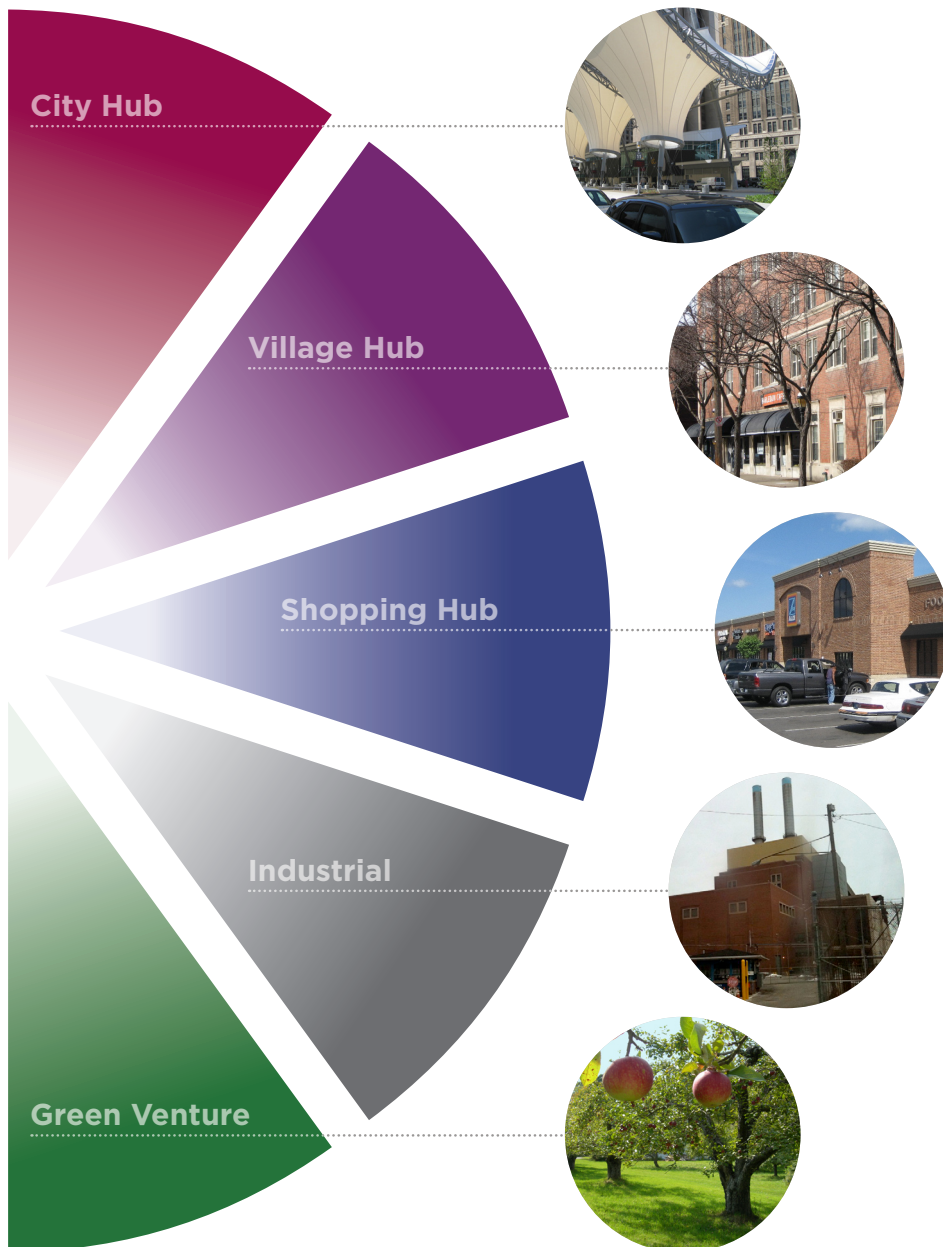
Neighborhood stakeholders define short and long-term priorities based on the agreed-upon future direction.



DO

Implement Revitalization Plan

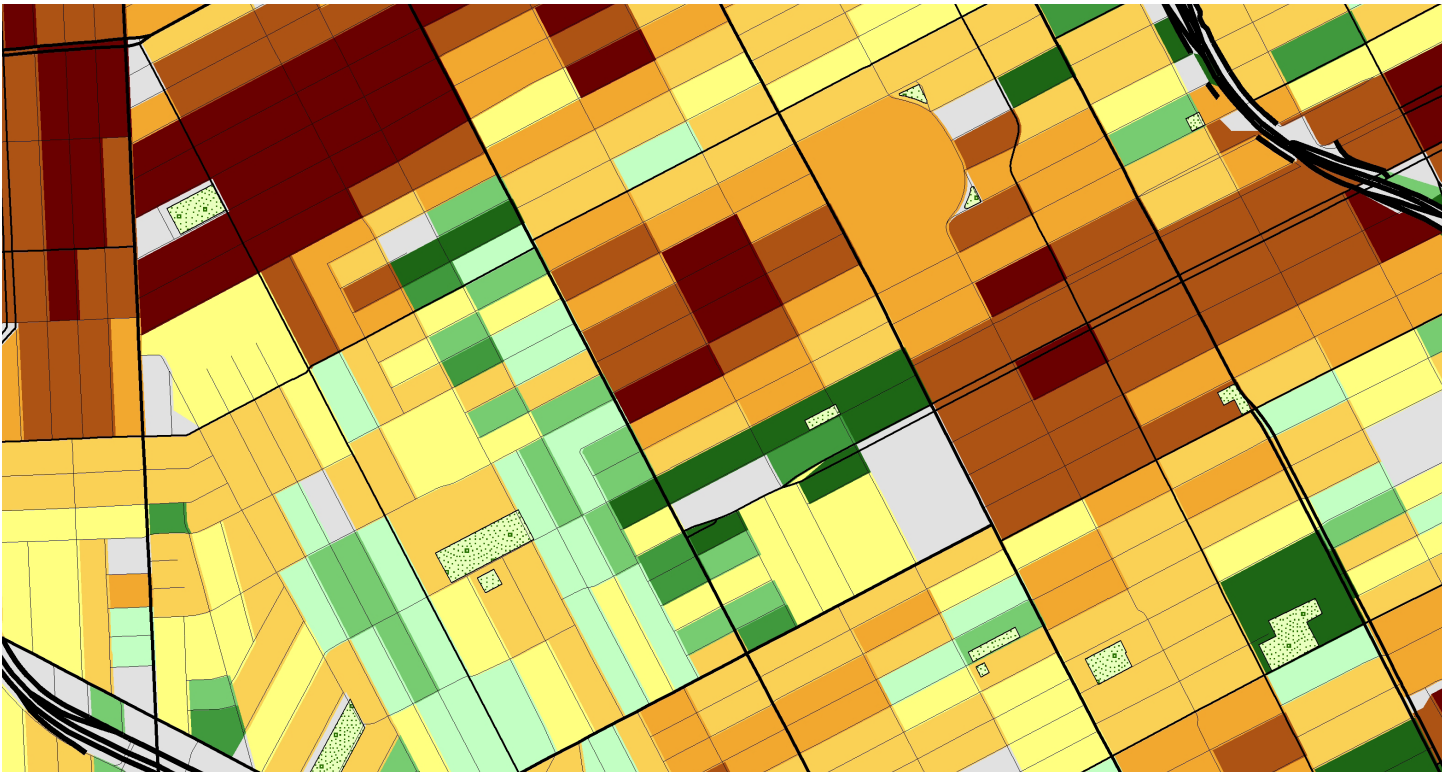
Neighborhood stakeholders work to find the resources and direct them to the short and long-term priorities and projects outlined in the plan.



NEIGHBORHOOD TYPOLOGY

The CDAD Strategic Framework uses a set of descriptive typologies to help residents visualize the future that they want for their neighborhood. Once goals are identified, residents can chart a course from a neighborhood's *current condition* to its *future direction*.

The **residential** typologies reflect a range of density. The **greenscape** typologies range from natural areas to working landscapes. The **industrial** typology encompasses all industrial uses. The **commercial** typologies describe both pedestrian and auto-oriented uses. Community stakeholders will decide how their neighborhood is aligned with the ten typologies. Each typology has suggested strategies to help residents turn their vision into reality.



HISTORY

Community Development Advocates of Detroit (CDAD) was formed in 1995 as a trade association to provide a citywide voice for community development organizations (CDOs) in Detroit. In early 2009, CDAD convened a Futures Task Force out of a conviction that Detroit required a bold new vision for its neighborhoods.

FOR MORE INFORMATION

To learn more about the Strategic Framework, visit CDAD’s website at www.detroitcommunitydevelopment.org for a more detailed description.

For more information, please contact either of the Strategic Framework Committee’s co-chairs:
 Sam Butler, sam.e.butler@gmail.com or
 Kris Miranne, kmiranne_sddc@att.net

The committee is supported by two consultants: Goaltrac, which is providing general support and Data-Driven Detroit, which is providing data indicator sets and analysis.

CORE PRINCIPLES

The Strategic Framework is a tool for neighborhood planning that can be used by community groups across the city. It is:

Community-Based

Local residents, business owners, neighborhood associations, community development organizations and other stakeholders use the framework to align future land use with community needs.

Data Driven

Neighborhood-based data provide an agreed-upon foundation for determining future priorities.

Results-Oriented

Local Stakeholders implement neighborhood plans with measurable results.

Flexible

Priorities and plans are updated regularly as neighborhoods change.