

# The Future of Detroit

## After a Brief Trip to the Past and Present

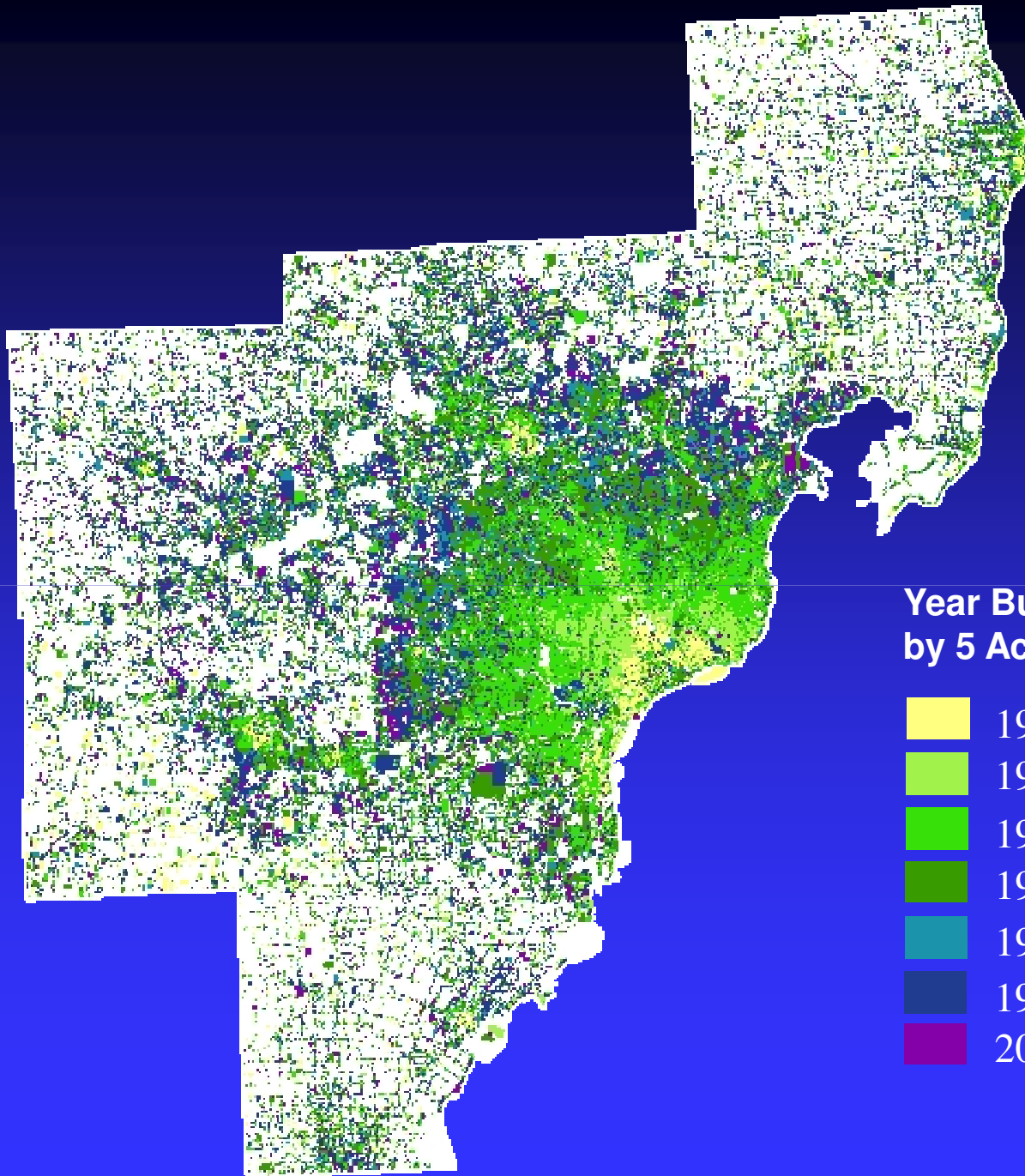
*Presentation to:*

**EQUITY Summit 2011**

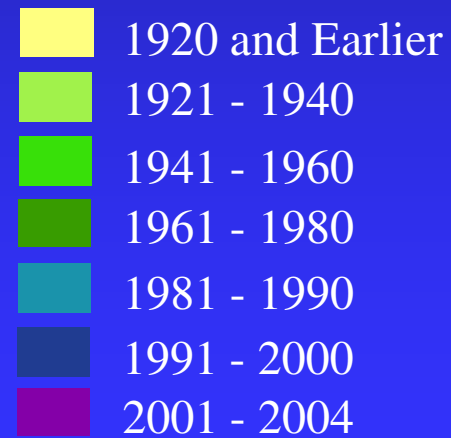
**Kurt Metzger**  
Data Driven Detroit

November 9, 2011

# Development History



## Year Built by 5 Acre Gridcells



**Population**



**1,537,195**



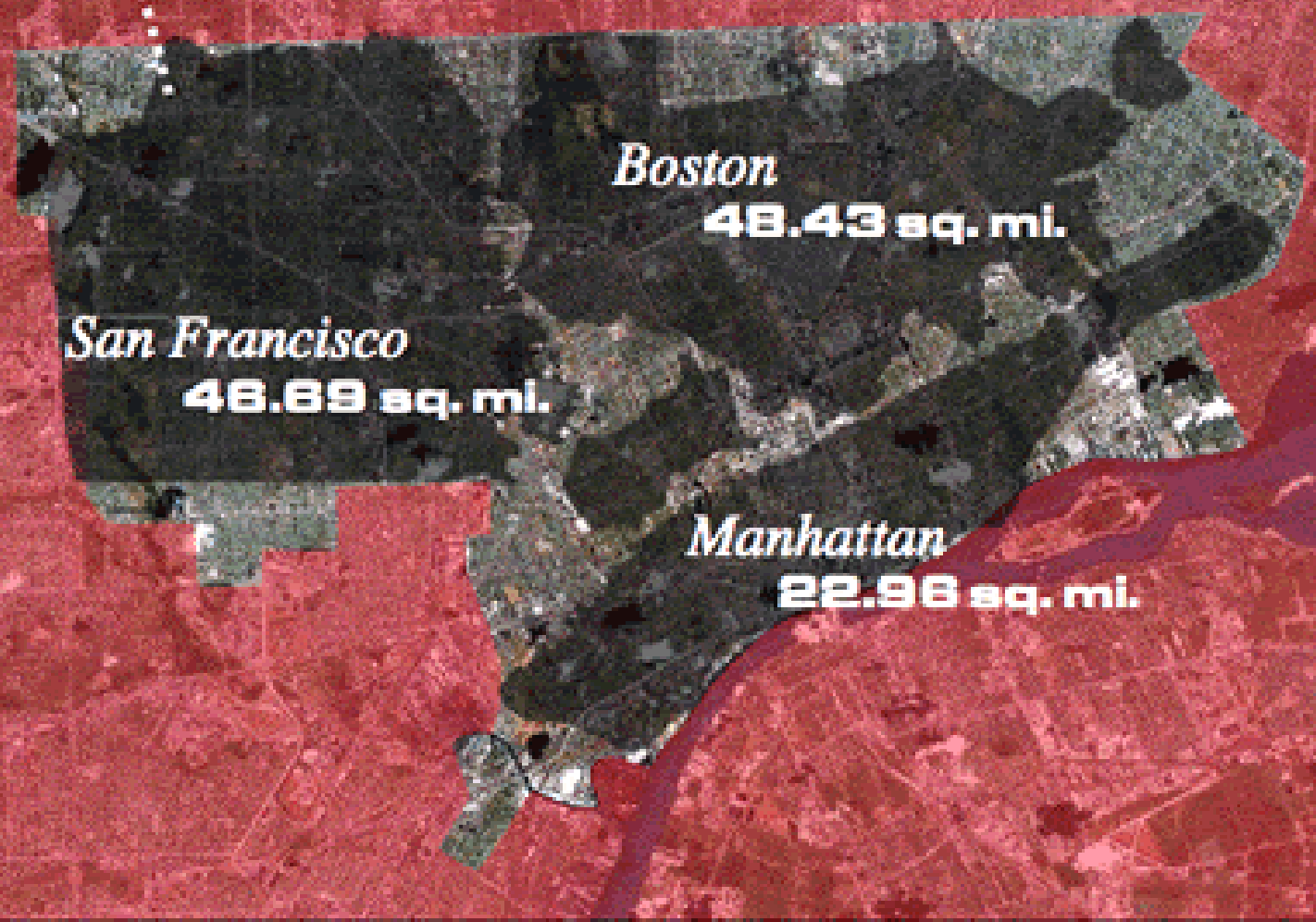
**751,682**



**581,616**

**2,870,493**

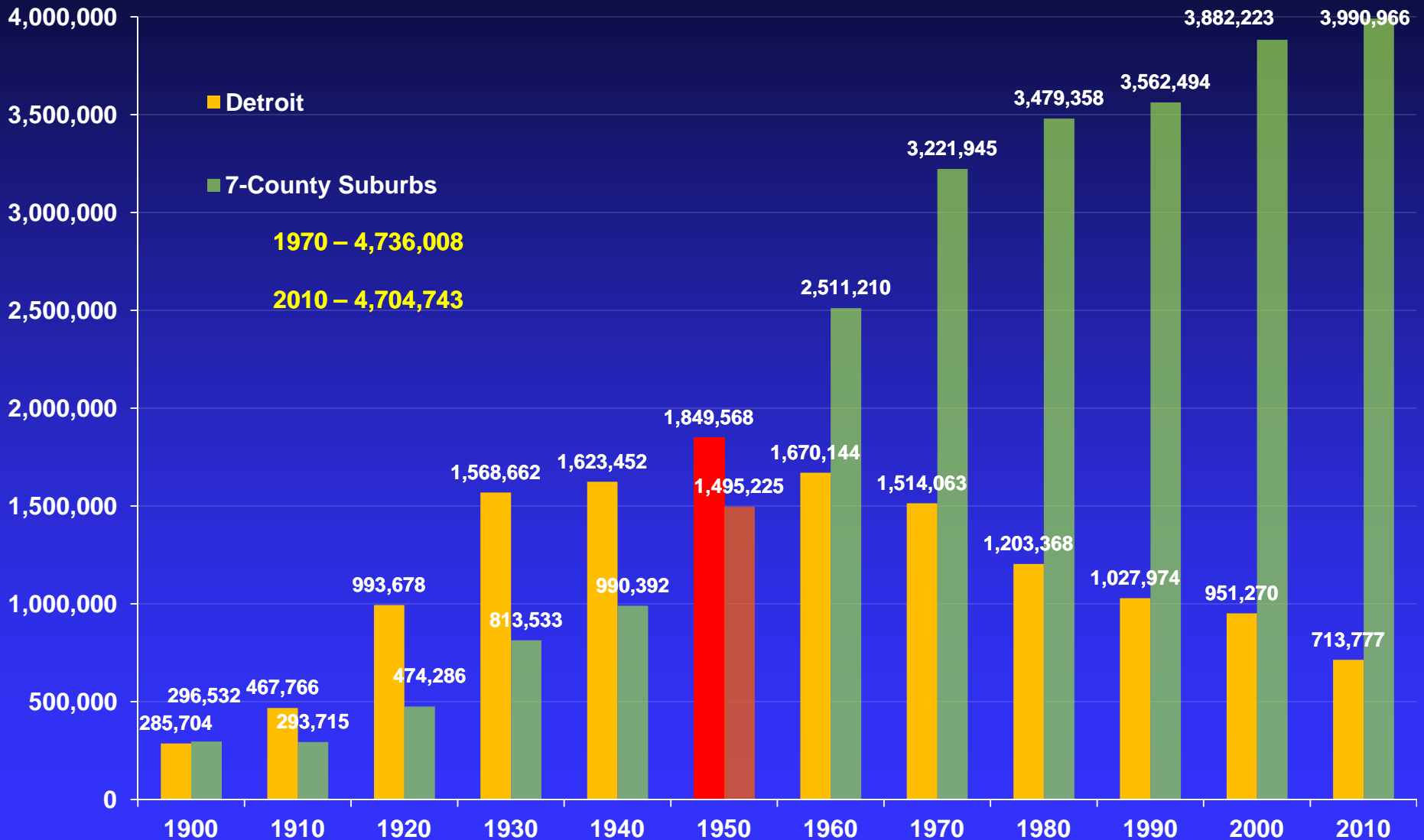
**118.08 sq. mi.**



**840,759**

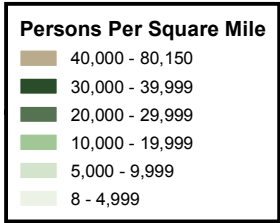
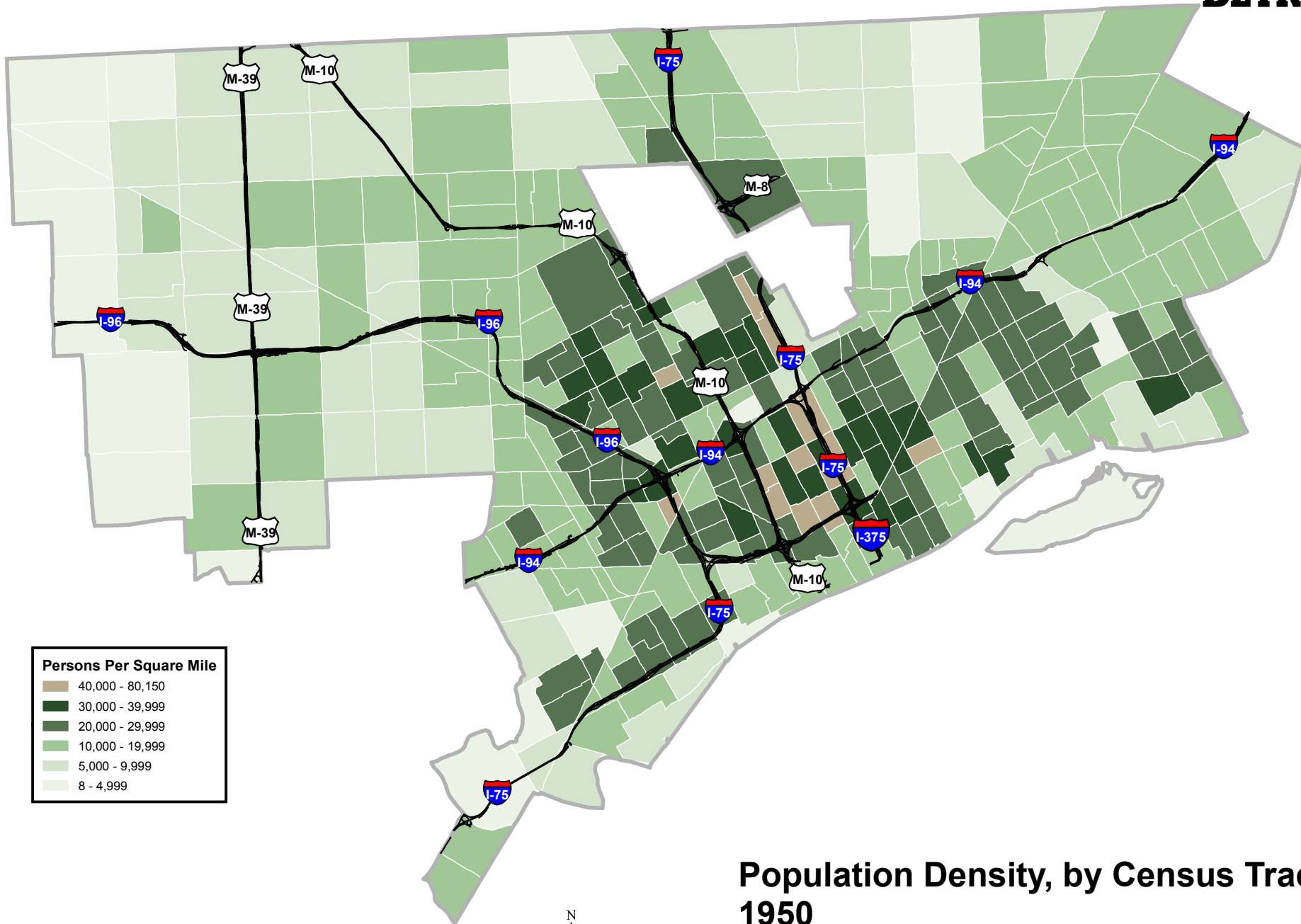
**Detroit 138.77 sq. mi.**

# The 1950s Marked the Turning Point for Detroit



Source: Census Bureau



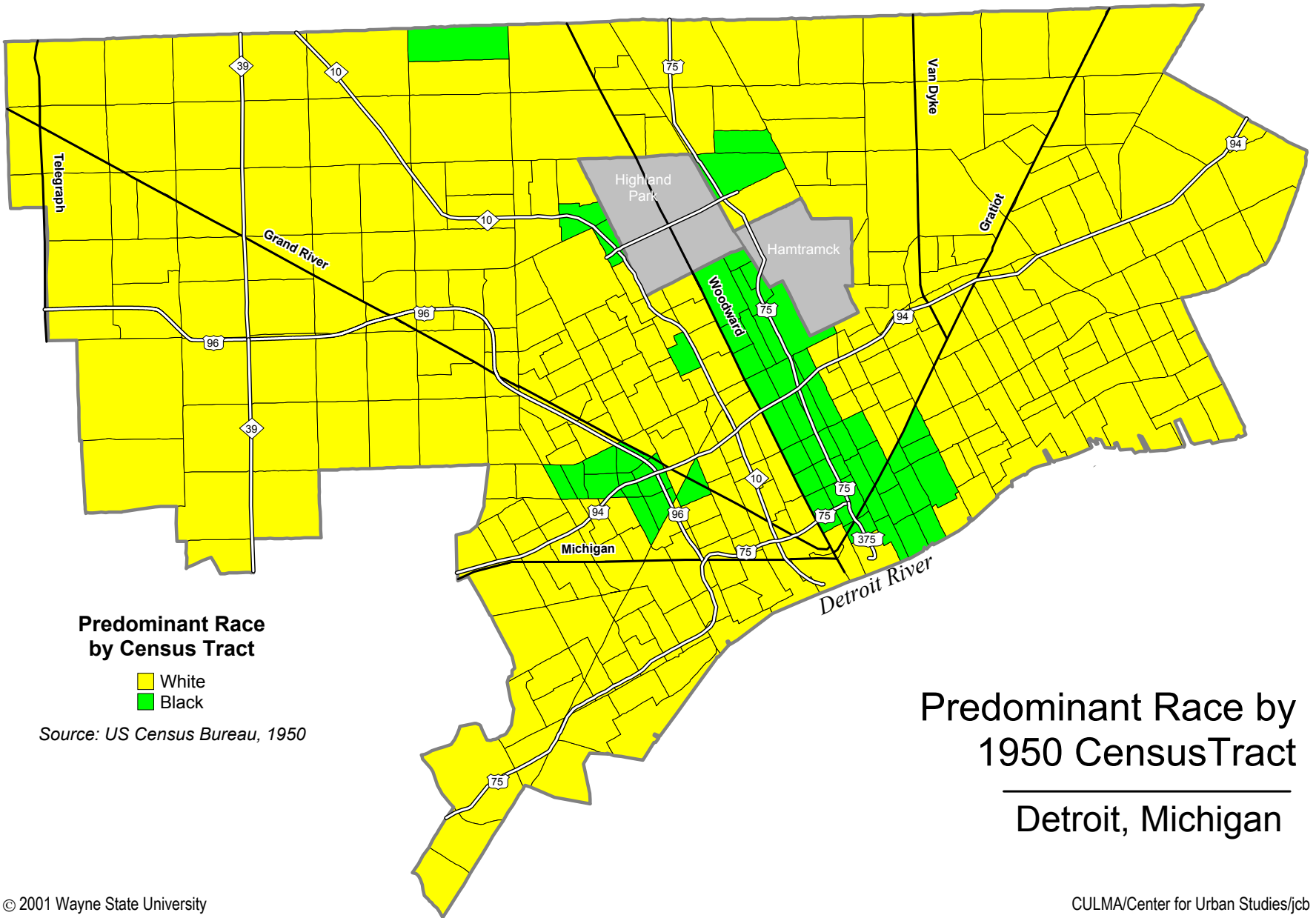


0 0.450.9 1.8  
Miles

Sources: Data Driven Detroit, Wayne State University,  
Claritas, Demographics Now, US Census Bureau 7/30/2010



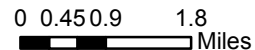
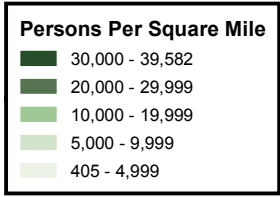
**Population Density, by Census Tract  
1950  
Detroit, Michigan**



**Predominant Race by  
1950 Census Tract**

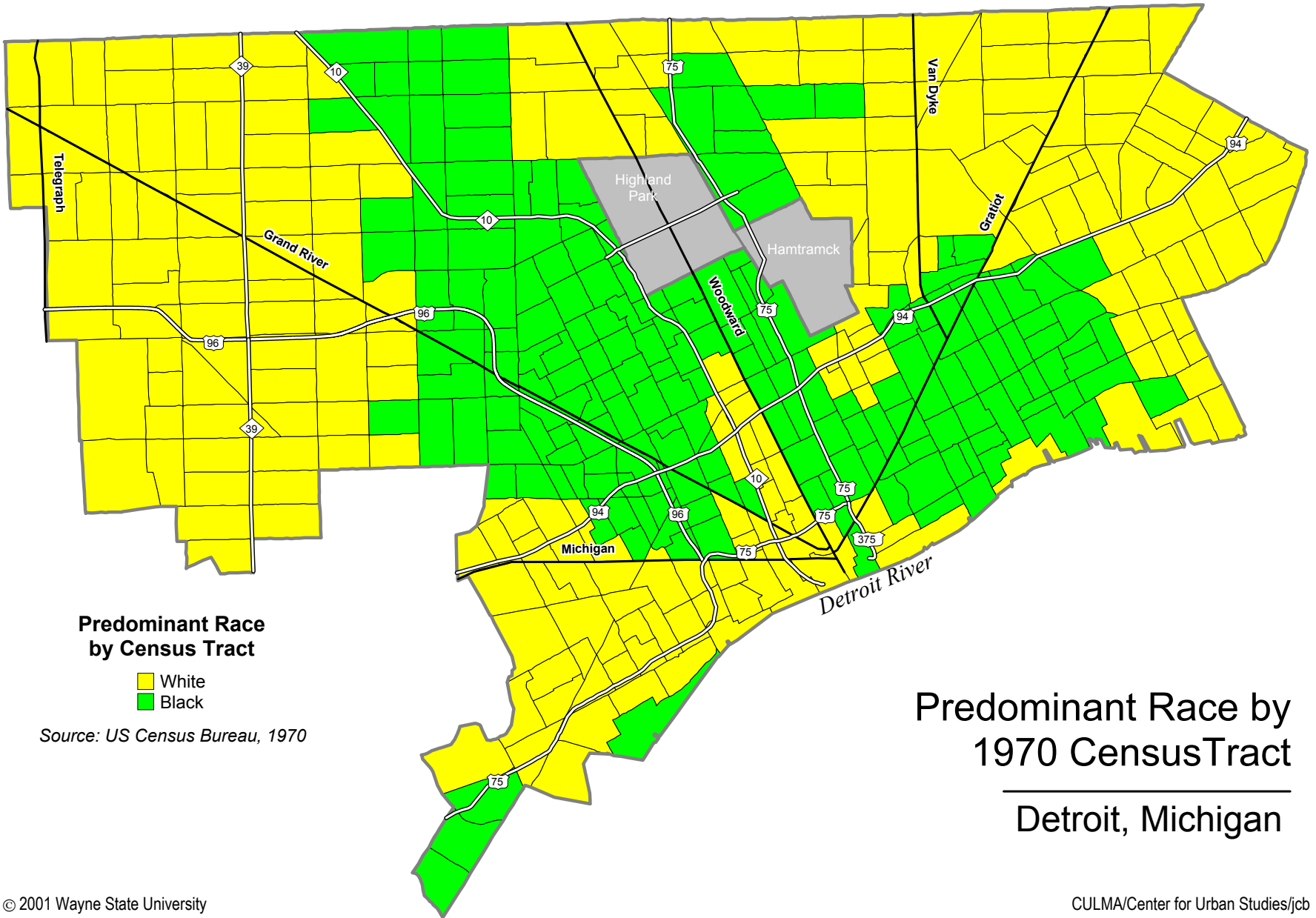
---

**Detroit, Michigan**



Sources: Data Driven Detroit, Wayne State University, Claritas, Demographics Now, US Census Bureau 7/30/2010

# Population Density, by Census Tract 1970 Detroit, Michigan



**Predominant Race  
by Census Tract**

- White
- Black

Source: US Census Bureau, 1970

**Predominant Race by  
1970 Census Tract**

**Detroit, Michigan**

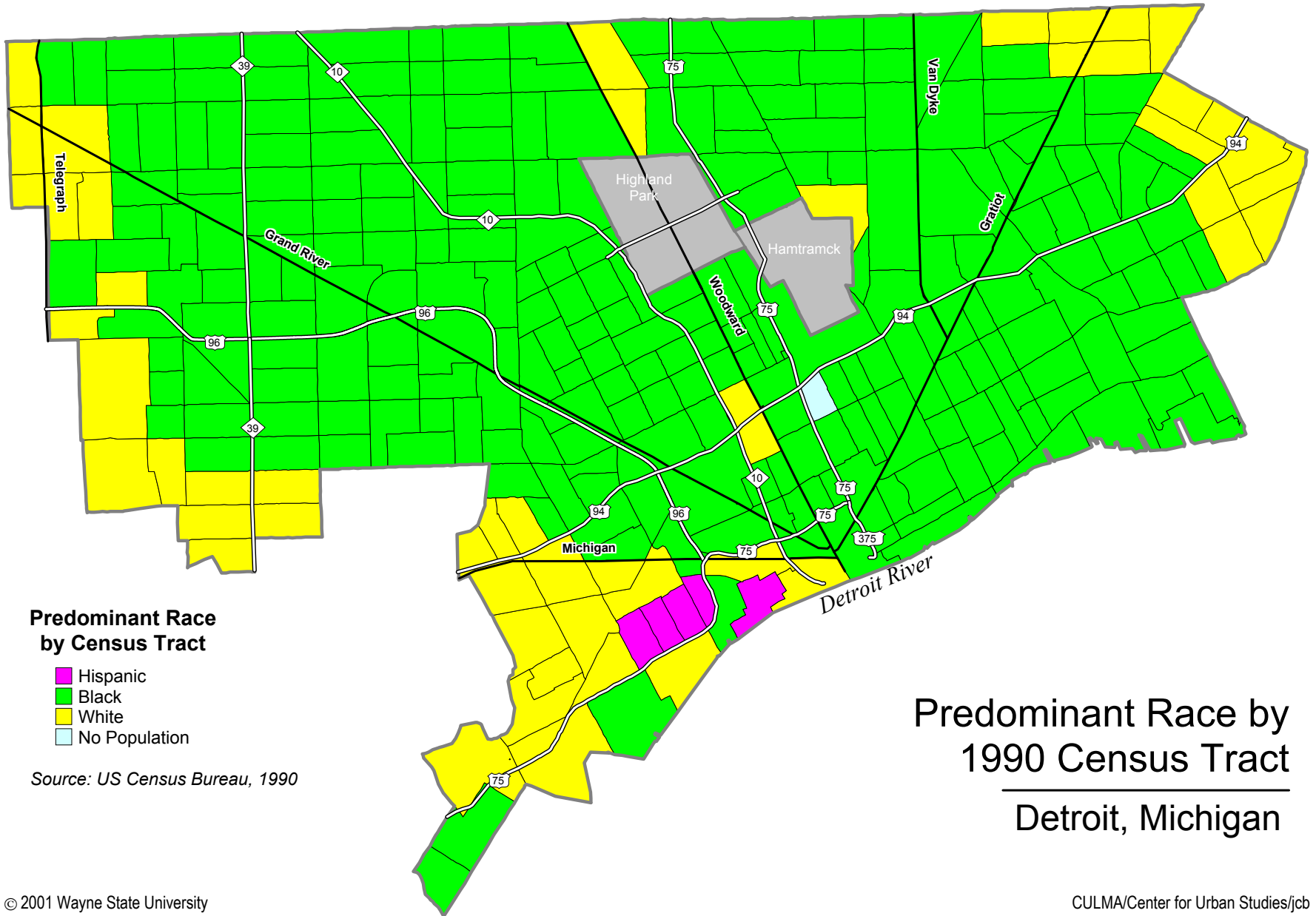


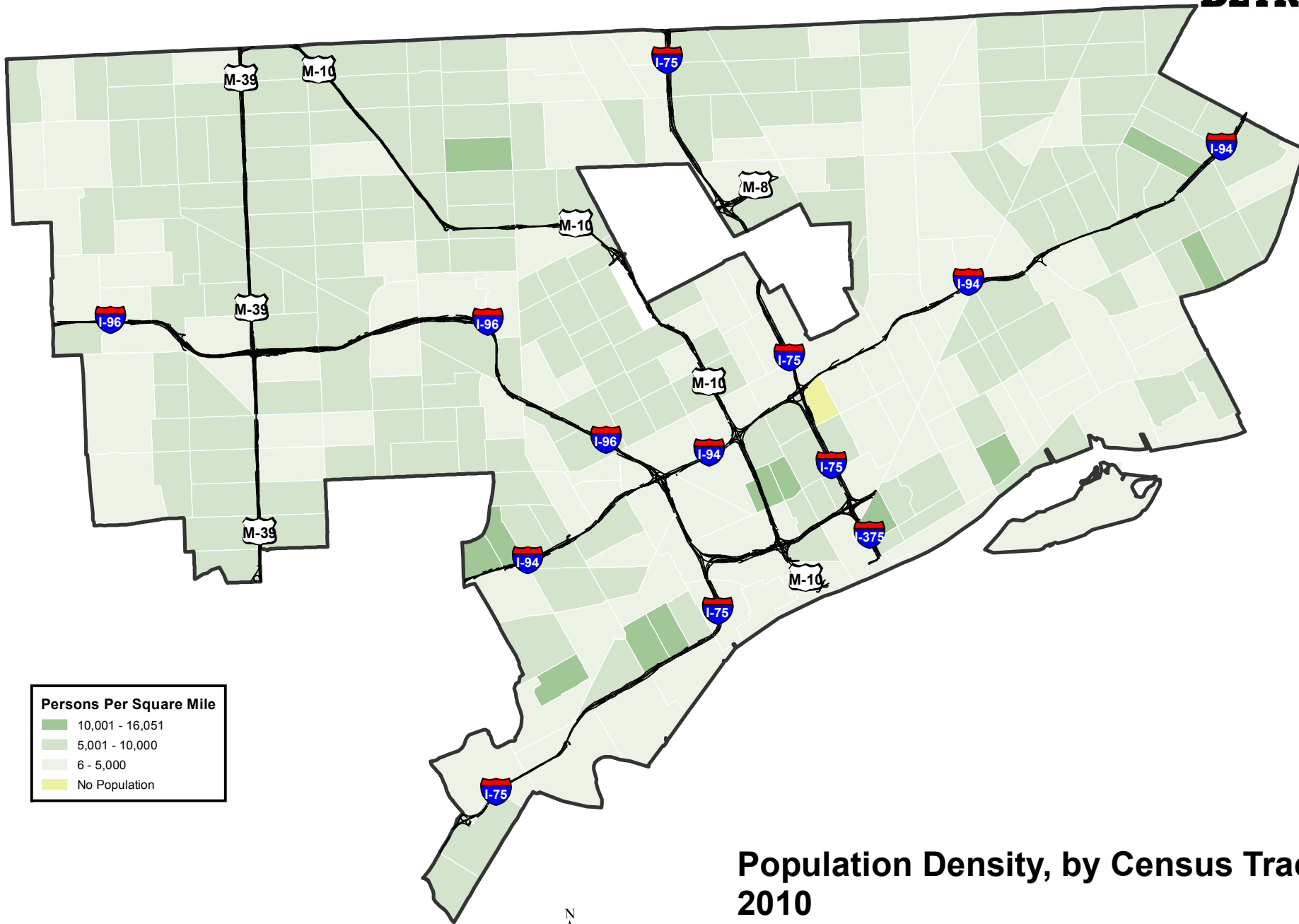
0 0.450.9 1.8  
Miles



Sources: Data Driven Detroit, Wayne State University, Claritas, Demographics Now, US Census Bureau 7/30/2010

## Population Density, by Census Tract 1990 Detroit, Michigan





**Persons Per Square Mile**

- 10,001 - 16,051
- 5,001 - 10,000
- 6 - 5,000
- No Population

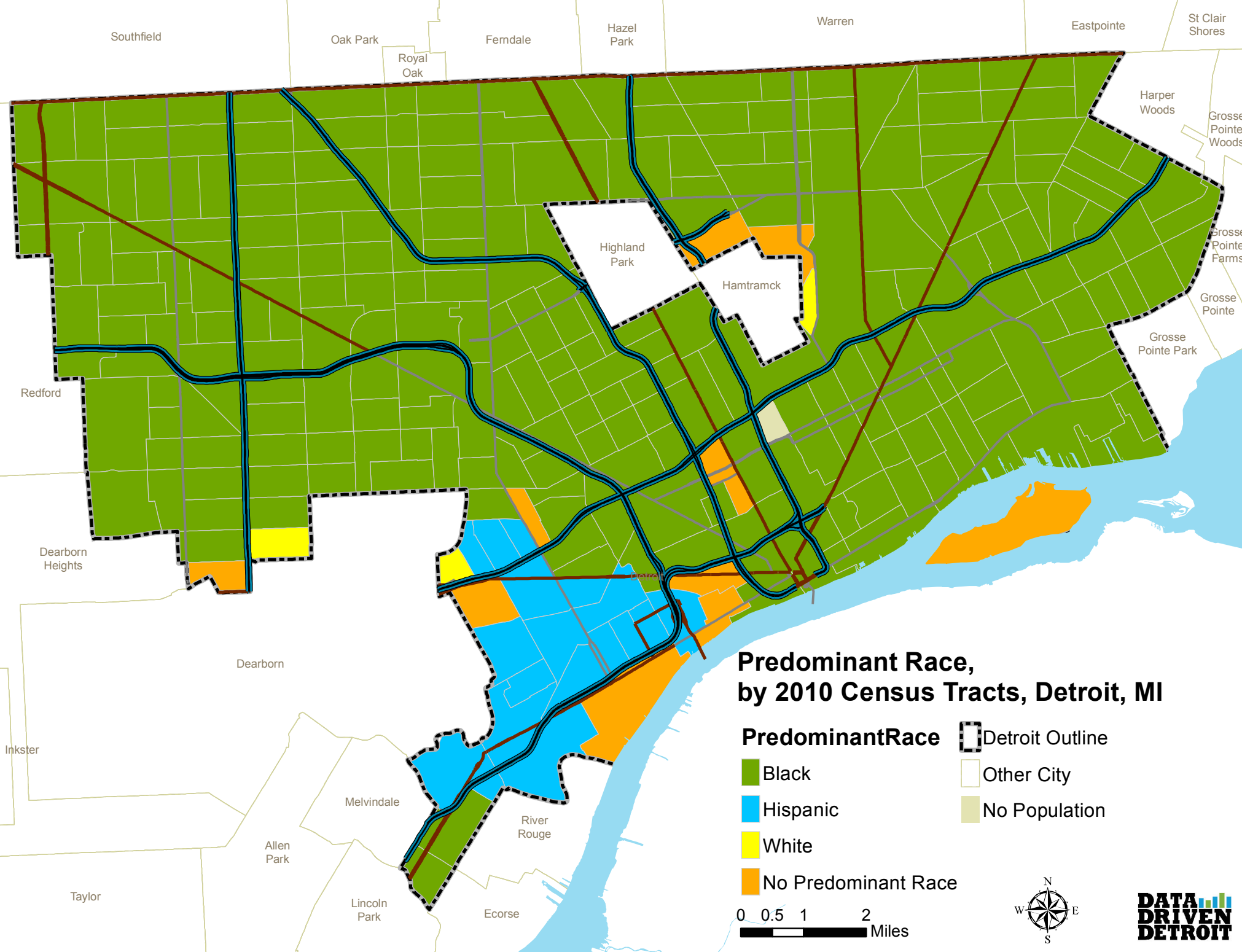
0 0.450.9 1.8  
Miles



# Population Density, by Census Tract 2010 Detroit, Michigan

Sources: Data Driven Detroit, Wayne State University, Claritas, Demographics Now, US Census Bureau 4/10/2011





Southfield

Oak Park

Ferdale

Hazel Park

Warren

Eastpointe

St Clair Shores

Royal Oak

Harper Woods

Grosse Pointe Woods

Highland Park

Hamtramck

Grosse Pointe Farms

Grosse Pointe

Grosse Pointe Park

Redford

Dearborn Heights

Dearborn

### Predominant Race, by 2010 Census Tracts, Detroit, MI

**PredominantRace**

Detroit Outline

Black

Other City

Hispanic

No Population

White

No Predominant Race

0 0.5 1 2 Miles



**DATA DRIVEN DETROIT**

Inkster

Melvindale

River Rouge

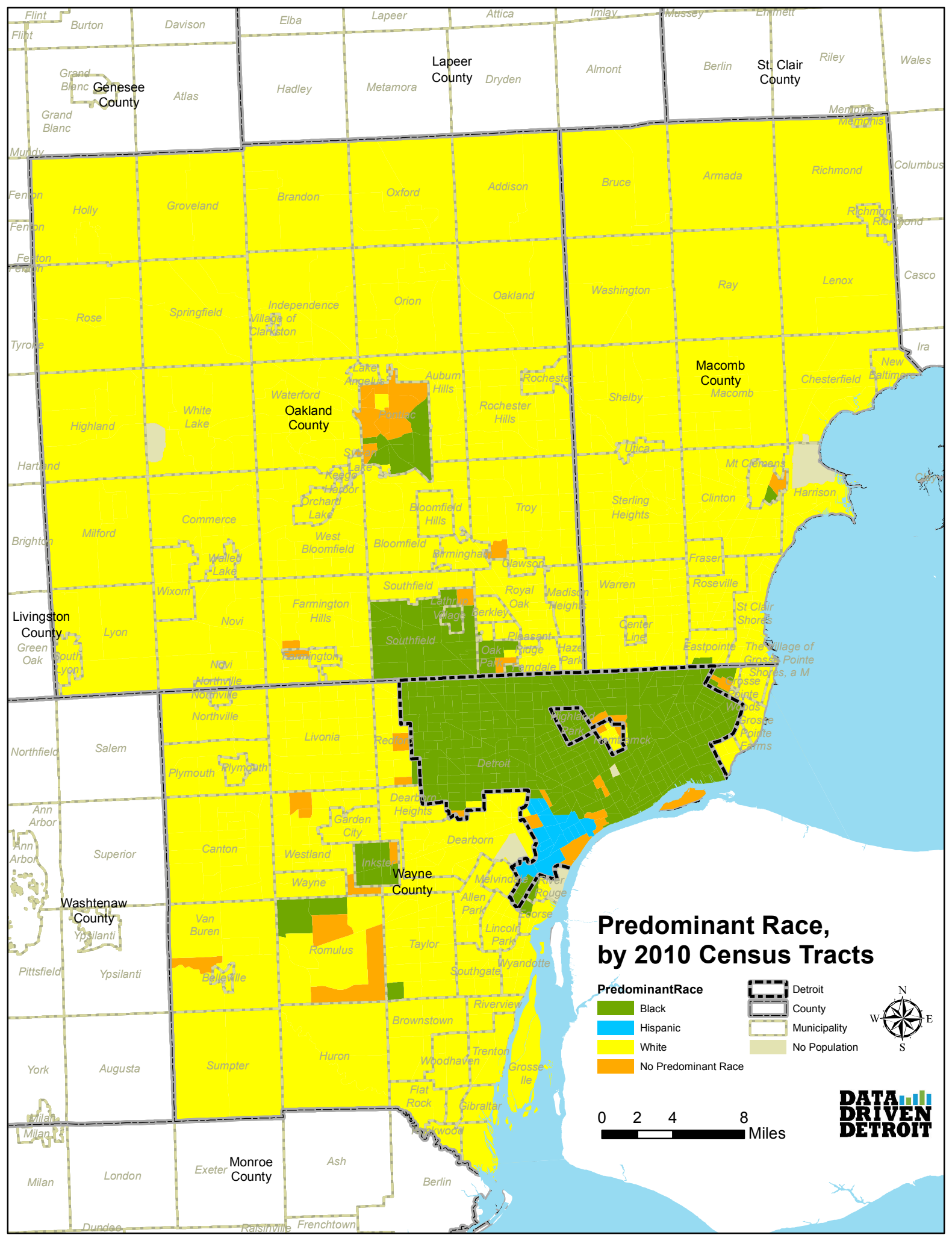
Allen Park

Lincoln Park

Ecorse

Taylor





# Predominant Race, by 2010 Census Tracts

**PredominantRace**

- Black
- Hispanic
- White
- No Predominant Race

Detroit  
 County  
 Municipality  
 No Population

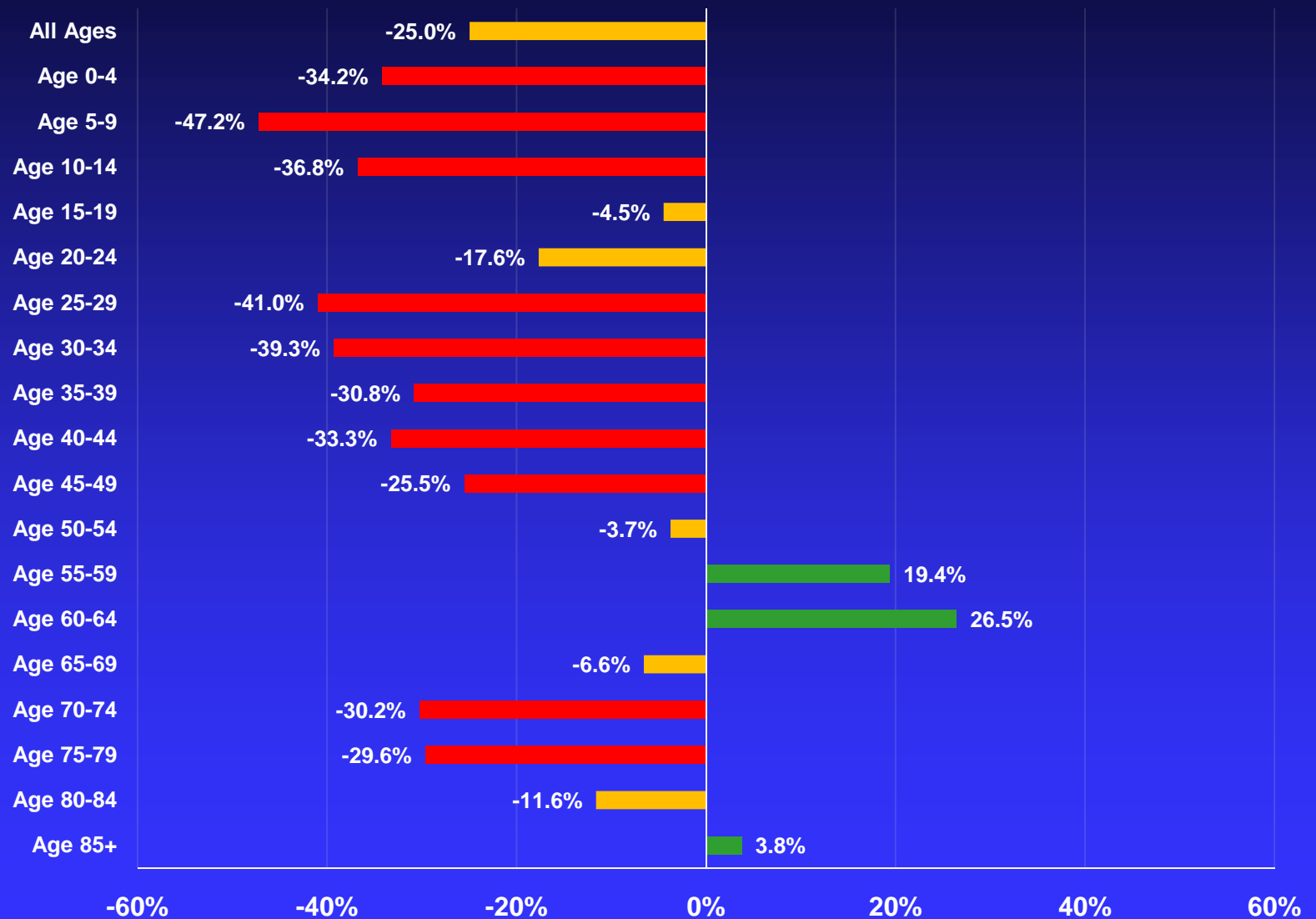


# The Suburban Movement of the 1990s Increased Post-2000 With Exodus of African Americans From Detroit

	<b>White</b>	<b>African American</b>	<b>Asian</b>	<b>Hispanic</b>	<b>Other/ Multi</b>
<b>Macomb</b>	-16,189	50,902	8,176	6,660	2,664
<b>Oakland</b>	-68,354	42,595	18,319	12,921	2,104
<b>Washtenaw</b>	3,642	3,826	6,746	5,021	2,530
<b>Wayne</b>	-126,804	-131,826	10,659	18,053	-10,316
<b>Out-Wayne</b>	-82,487	53,567	12,445	16,541	-3,327
<b>Detroit</b>	-44,317	-185,393	-1,786	1,512	-6,989

Source: Census Bureau

# 2000 – 2010 Population Change by Age Group DETROIT



# Who will live here?



## Direct Impacts of Population Change

# 1950



### Historic Density

185 Homes  
540 People  
23 Persons per acre

**\$151,673** tax revenue

# 2010



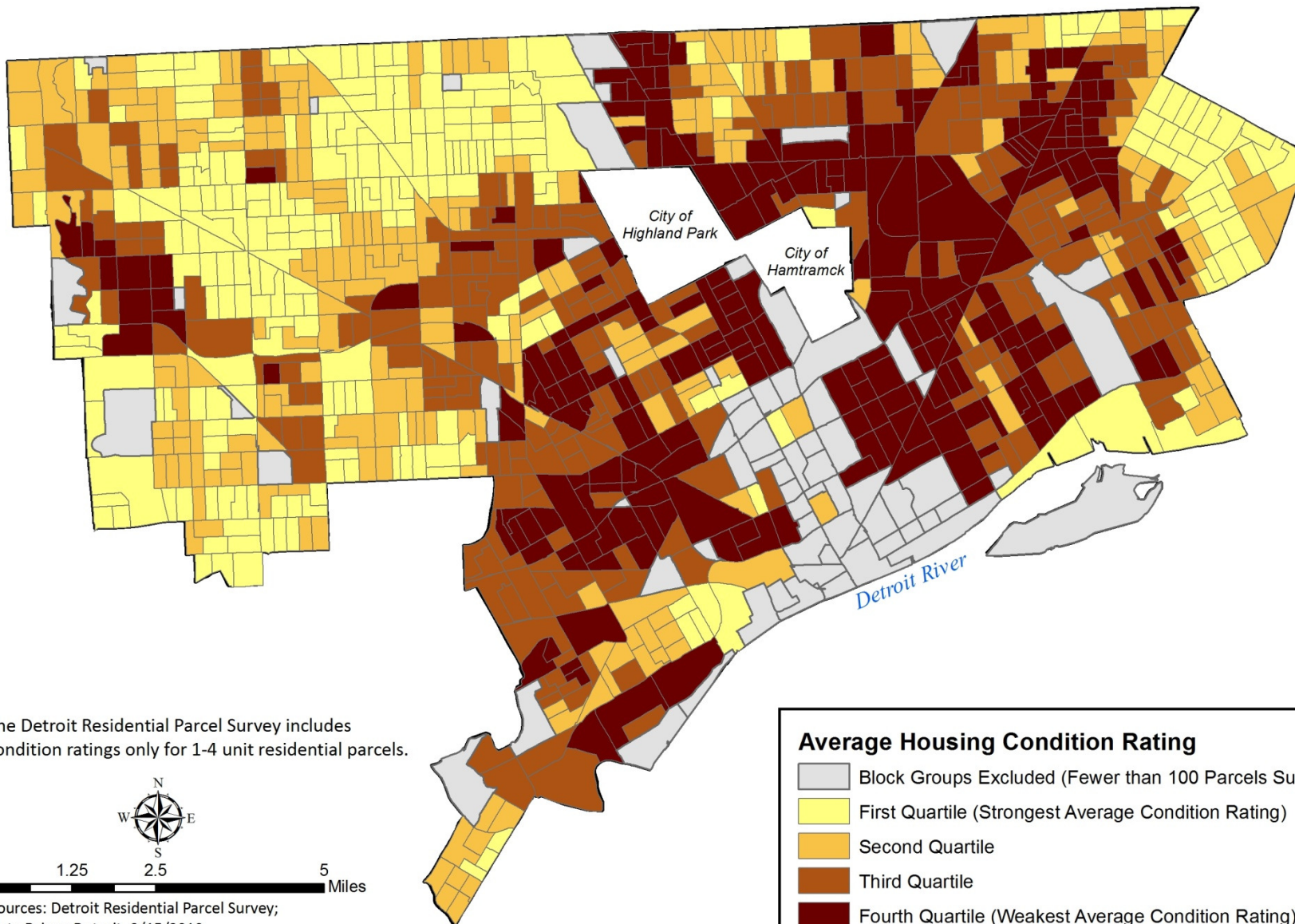
### Current Density

40 Homes  
116 People  
5 Persons per acre

**\$32,794** tax revenue



# Average Housing Condition, by Census Block Group Detroit, Michigan



The Detroit Residential Parcel Survey includes condition ratings only for 1-4 unit residential parcels.



0 1.25 2.5 5 Miles

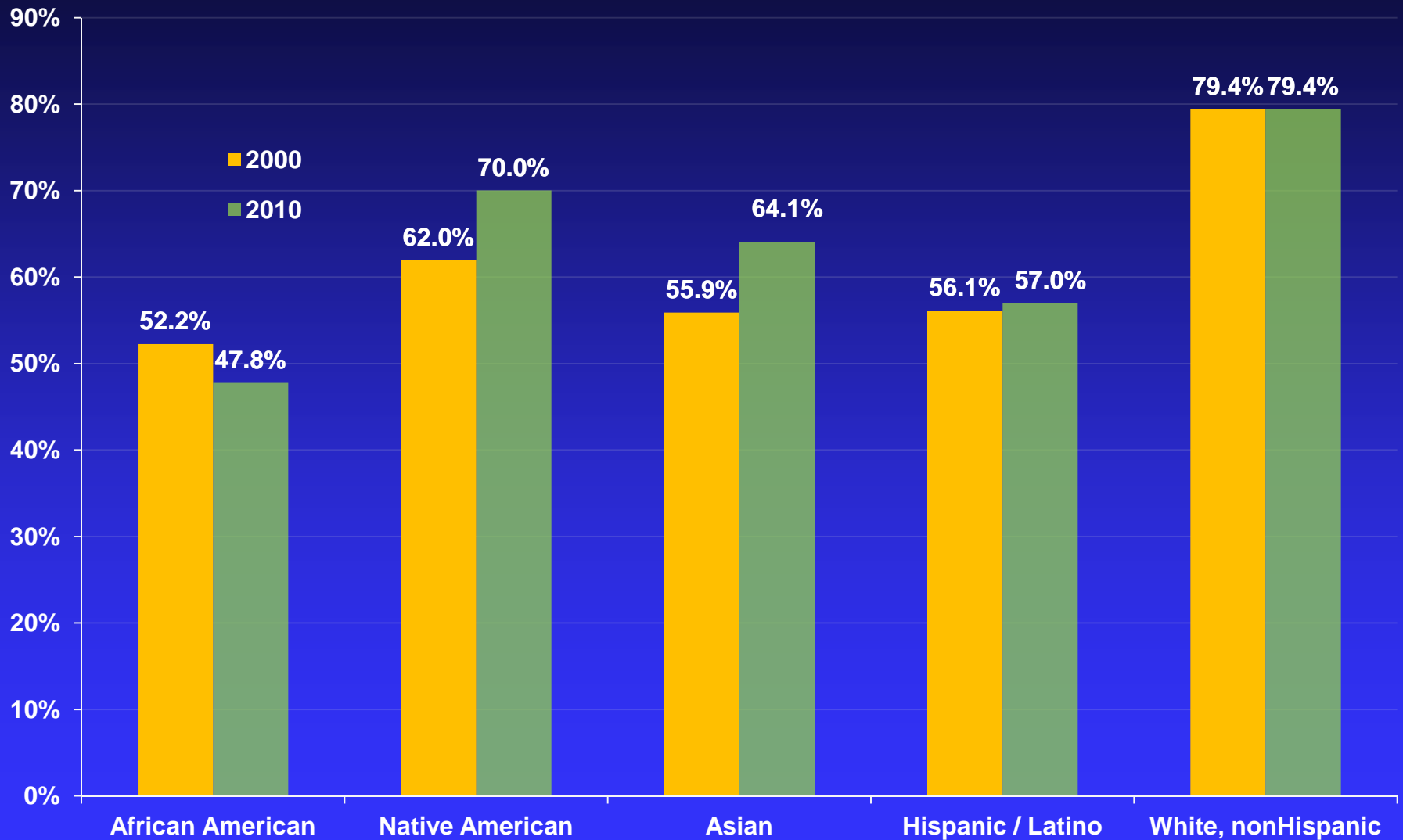
Sources: Detroit Residential Parcel Survey;  
Data Driven Detroit. 2/15/2010

# The City Of Detroit and Its Suburbs Are Vastly Different in a Number of Areas

	<b>City</b>	<b>Suburbs</b>		<b>City</b>	<b>Suburbs</b>
<b>White, NH</b>	<b>8%</b>	<b>80%</b>	<b>College Grad +</b>	<b>12%</b>	<b>30%</b>
<b>African American</b>	<b>82 %</b>	<b>11%</b>	<b>Unemployment</b>	<b>33%</b>	<b>14%</b>
<b>Asian/PI</b>	<b>1%</b>	<b>4%</b>	<b>Household Income &lt;\$25K</b>	<b>49%</b>	<b>23%</b>
<b>Latino</b>	<b>7%</b>	<b>3%</b>	<b>Housing Vacancy Rate</b>	<b>23%</b>	<b>8%</b>
<b>Foreign Born</b>	<b>5%</b>	<b>9%</b>	<b>No Vehicle Available</b>	<b>24%</b>	<b>6%</b>

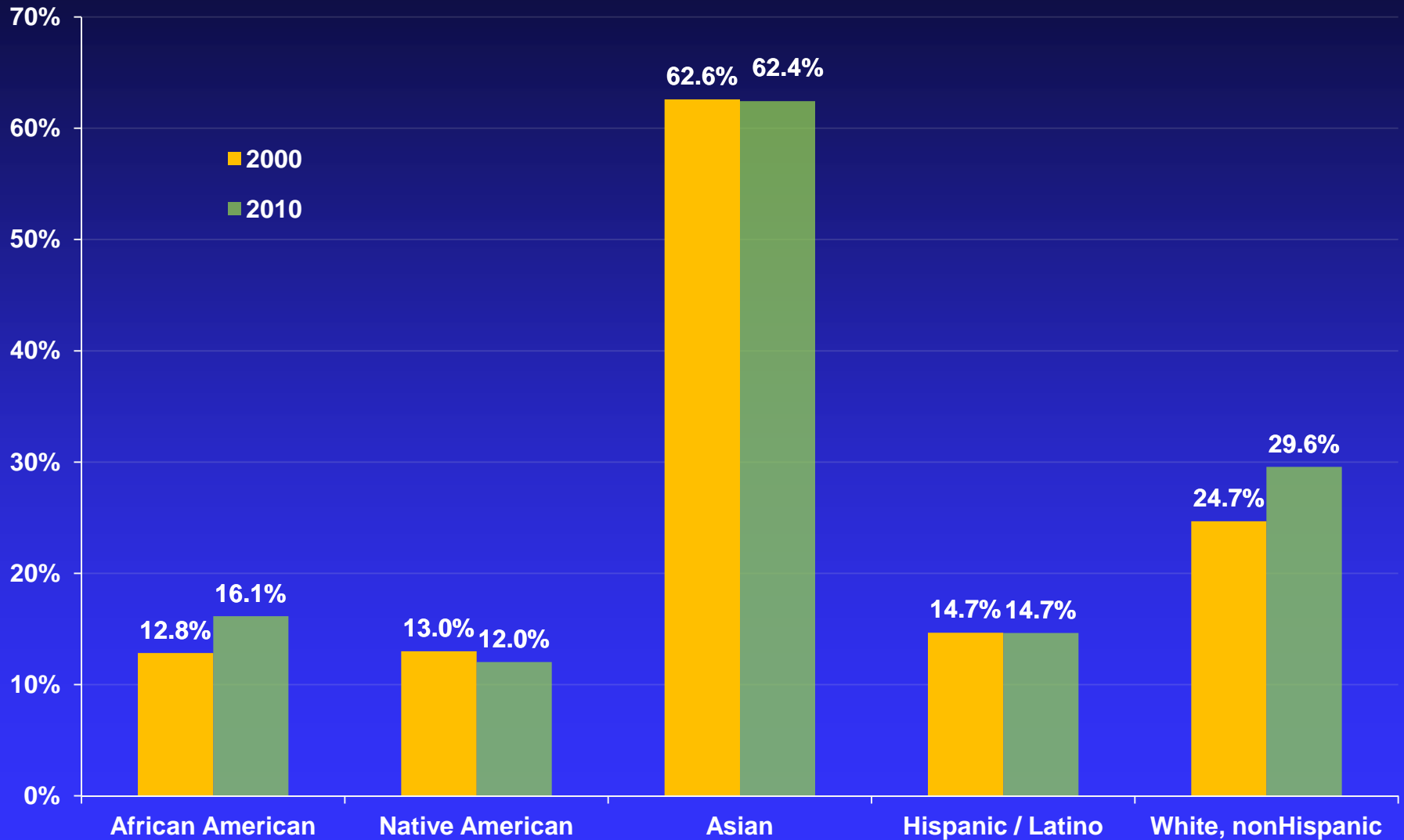
Source: Census Bureau – 2010 Census and 2010 American Community Survey

# Metropolitan Area African Americans Were the Only Group to Experience a Decrease in Home Ownership



Source: Census Bureau – 2000 Census and 2010 ACS

# Metropolitan Gains in College Graduation Rates Were Achieved by African Americans and Whites

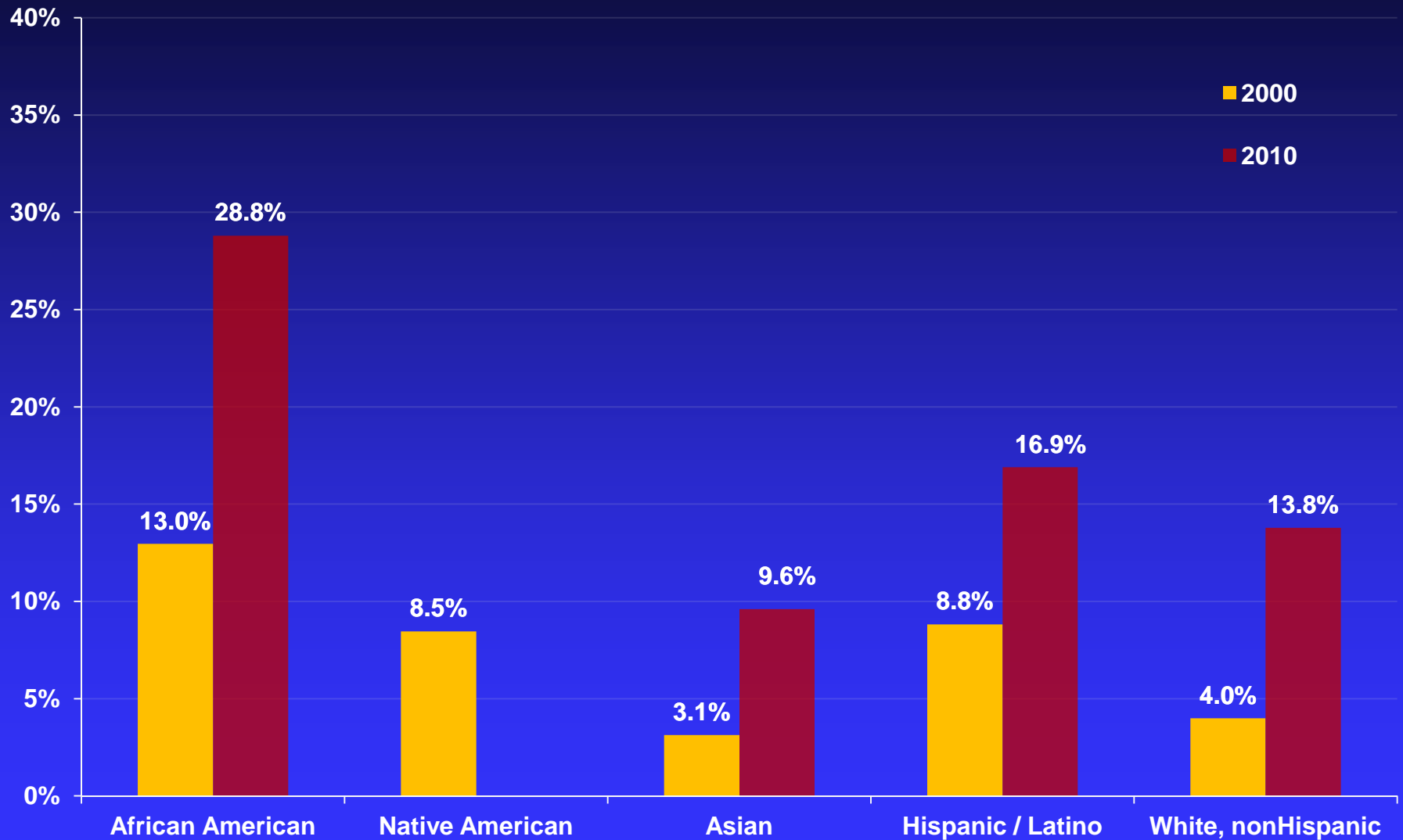


Source: Census Bureau – 2000 Census and 2010 ACS

Persons 25 Years of Age+



# Metropolitan Area Unemployment Rates Increased Most and Participation Decreased for African Americans



Source: Census Bureau – 2000 Census and 2010 ACS

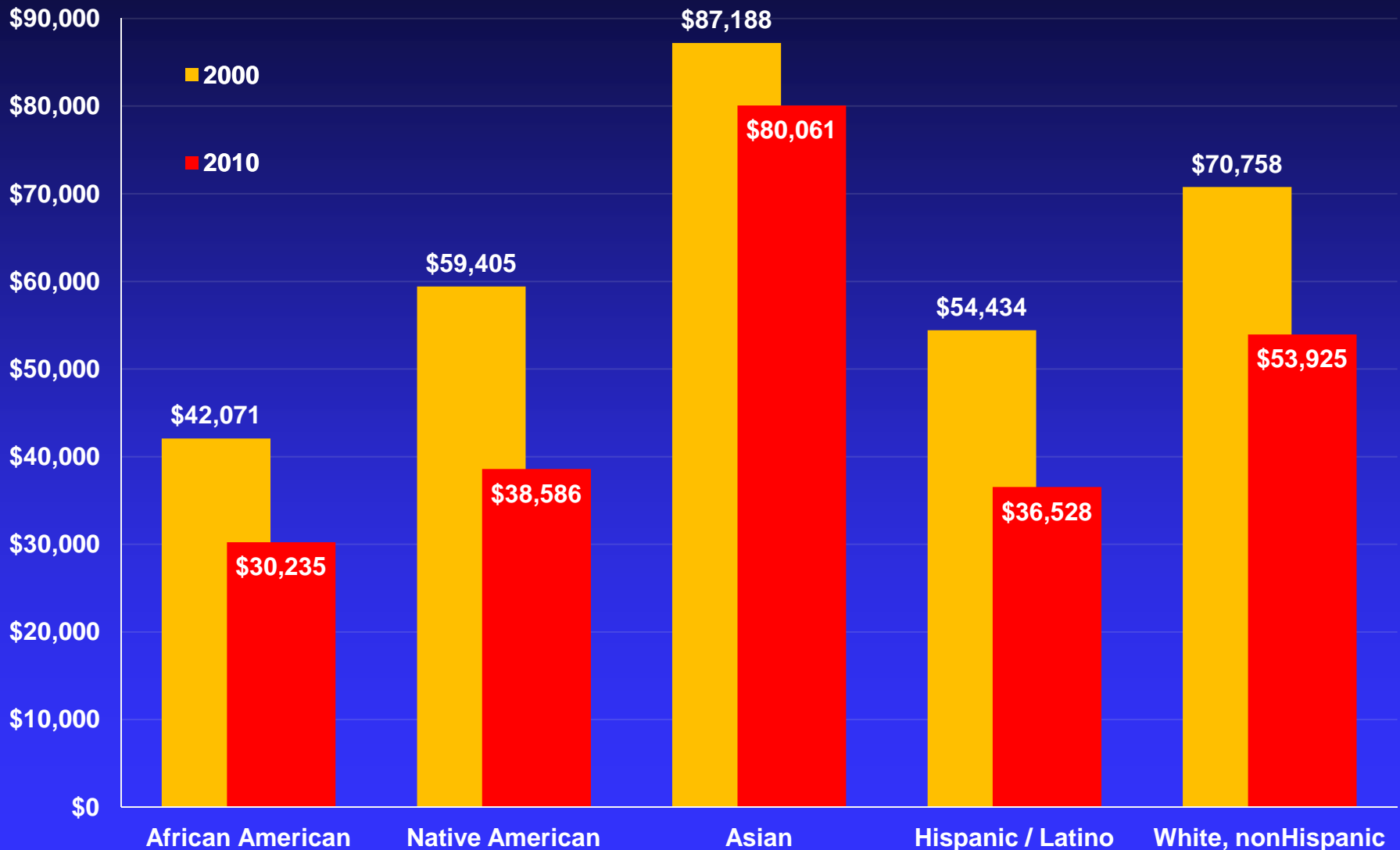
Persons 16 Years of Age+

# Household Incomes Throughout Michigan Have Decreased At Rates Three Times That of the Nation

	1999 (2000 Census)	2010 ACS	Change	Percent Change
<b><i>Median Household Income</i></b>				
<b>United States</b>	54,941	50,046	-4,905	<b>-8.9%</b>
<b>Michigan</b>	58,449	45,413	-13,036	<b>-22.3%</b>
<b>Detroit MSA</b>	64,348	48,198	-16,150	<b>-25.1%</b>
<b>Macomb County</b>	68,178	49,160	-19,018	<b>-27.9%</b>
<b>Oakland County</b>	81,008	60,266	-20,742	<b>-25.6%</b>
<b>Wayne County</b>	53,357	39,408	-13,949	<b>-26.1%</b>
<b>City of Detroit</b>	38,636	29,526	-12,849	<b>-33.3%</b>

\* Note: All 1999 monetary values are adjusted to 2010 dollars using U.S. Consumer Price Research Series Index for All Urban Consumers (CPI-U-RS) from 1999 to 2009.  
Source: U.S. Department of Labor

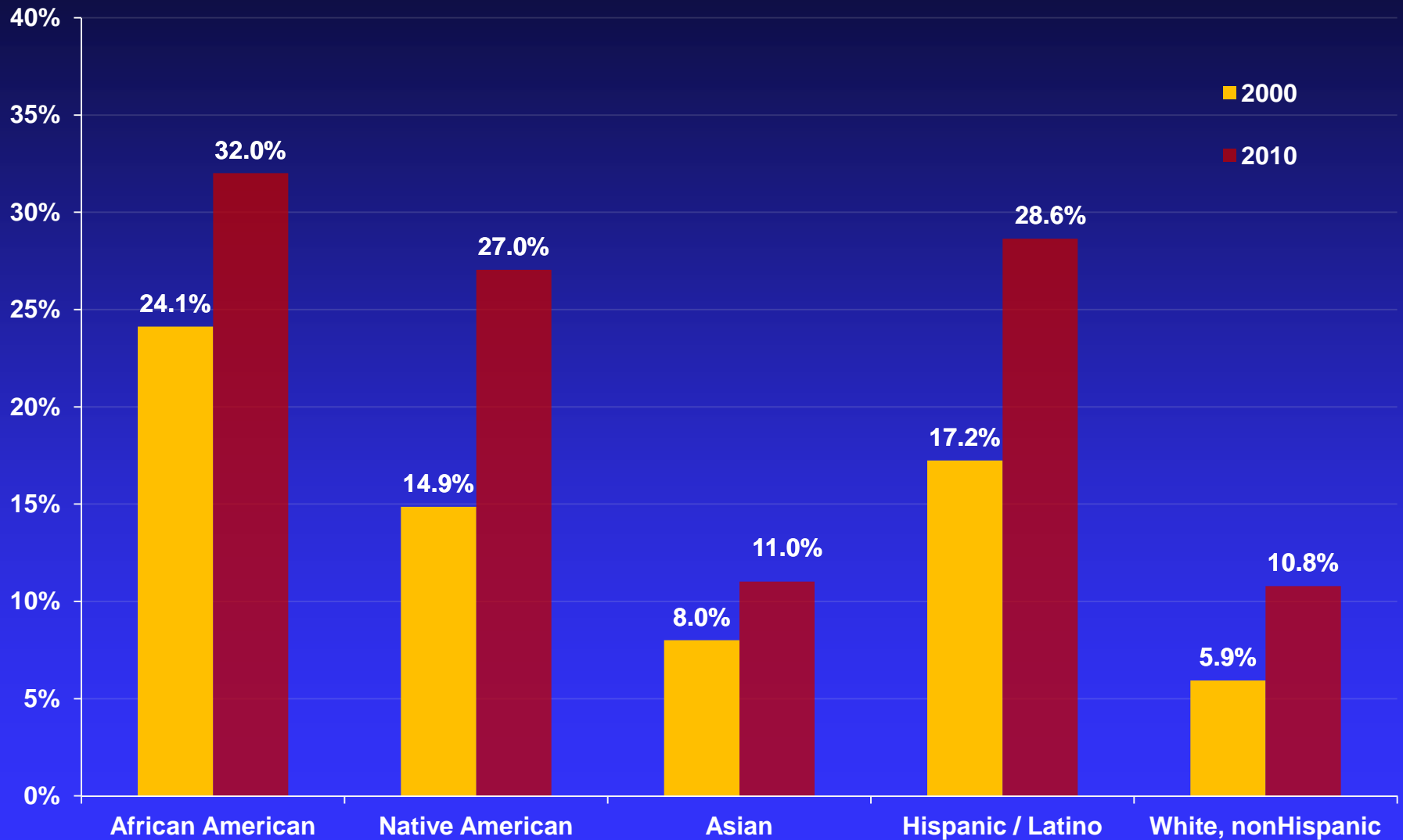
# Household Income Dropped for All Groups in the Metro Area – No Group Exceeded \$30,000 in Detroit



Source: Census Bureau – 2000 Census and 2010 ACS

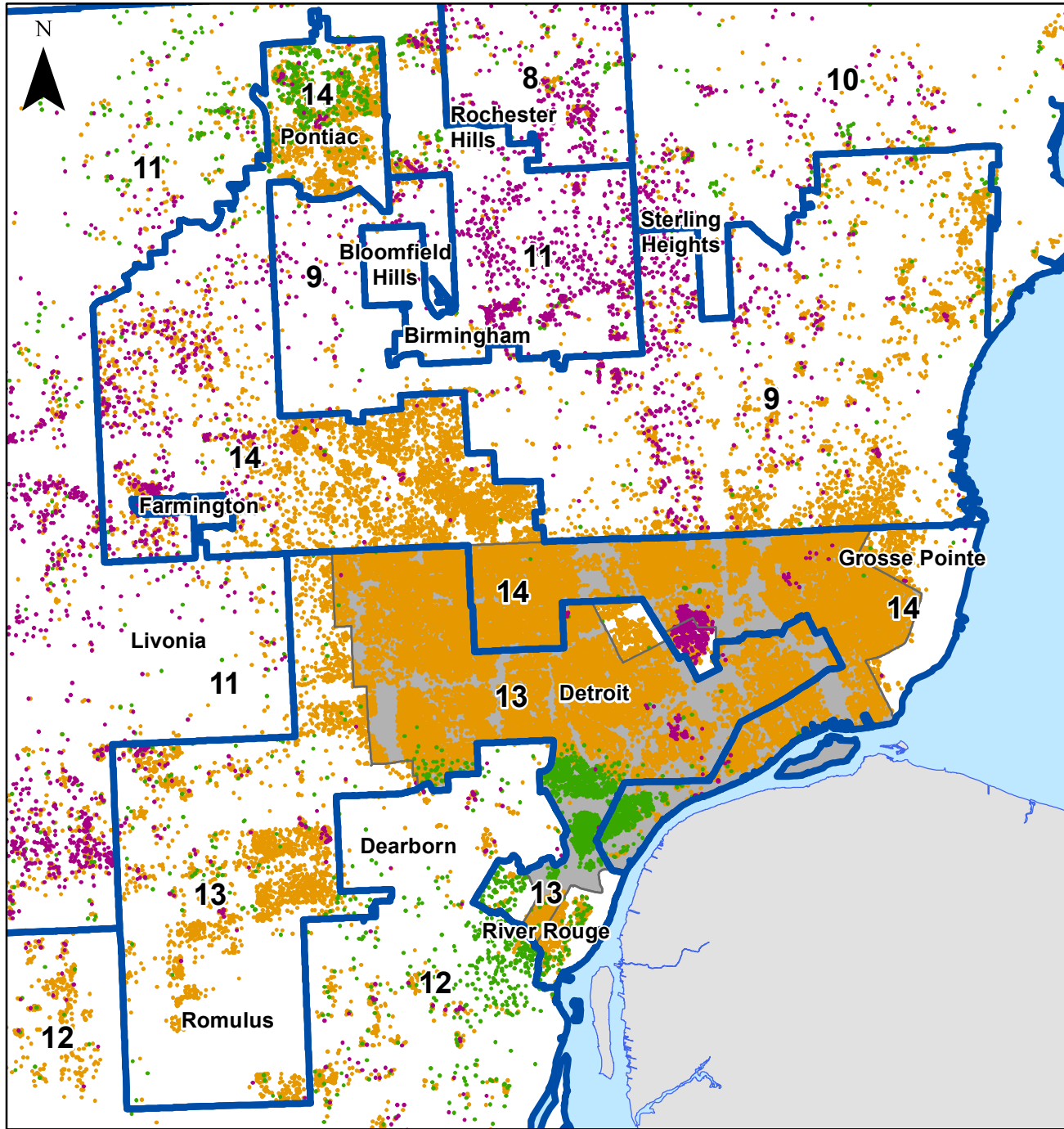
All Values are in 2010 Dollars

# Metropolitan Area Poverty Rates Increased Most for African Americans, Native Americans and Latinos

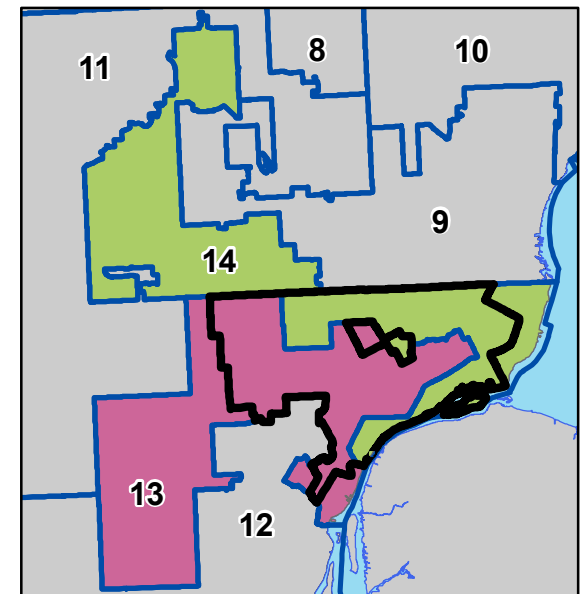


Source: Census Bureau – 2000 Census and 2010 ACS

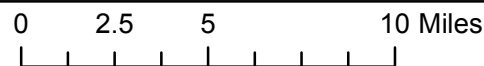
# 2011 State Apportionment Of Congressional Districts By Racial Distribution In Detroit



- 1 Dot = 25 People
- Hispanic
- Black (non-Hispanic)
- Asian (non-Hispanic)
- ▭ District Lines
- ▭ Water
- ▭ Detroit
- ▭ Neighboring Areas



Source: US Census 2010 Redistricting data PL 94-171



# The parable of Detroit

## So cheap, there's hope

Having lost a quarter of its population in a decade, America's most blighted big city could be turning the corner

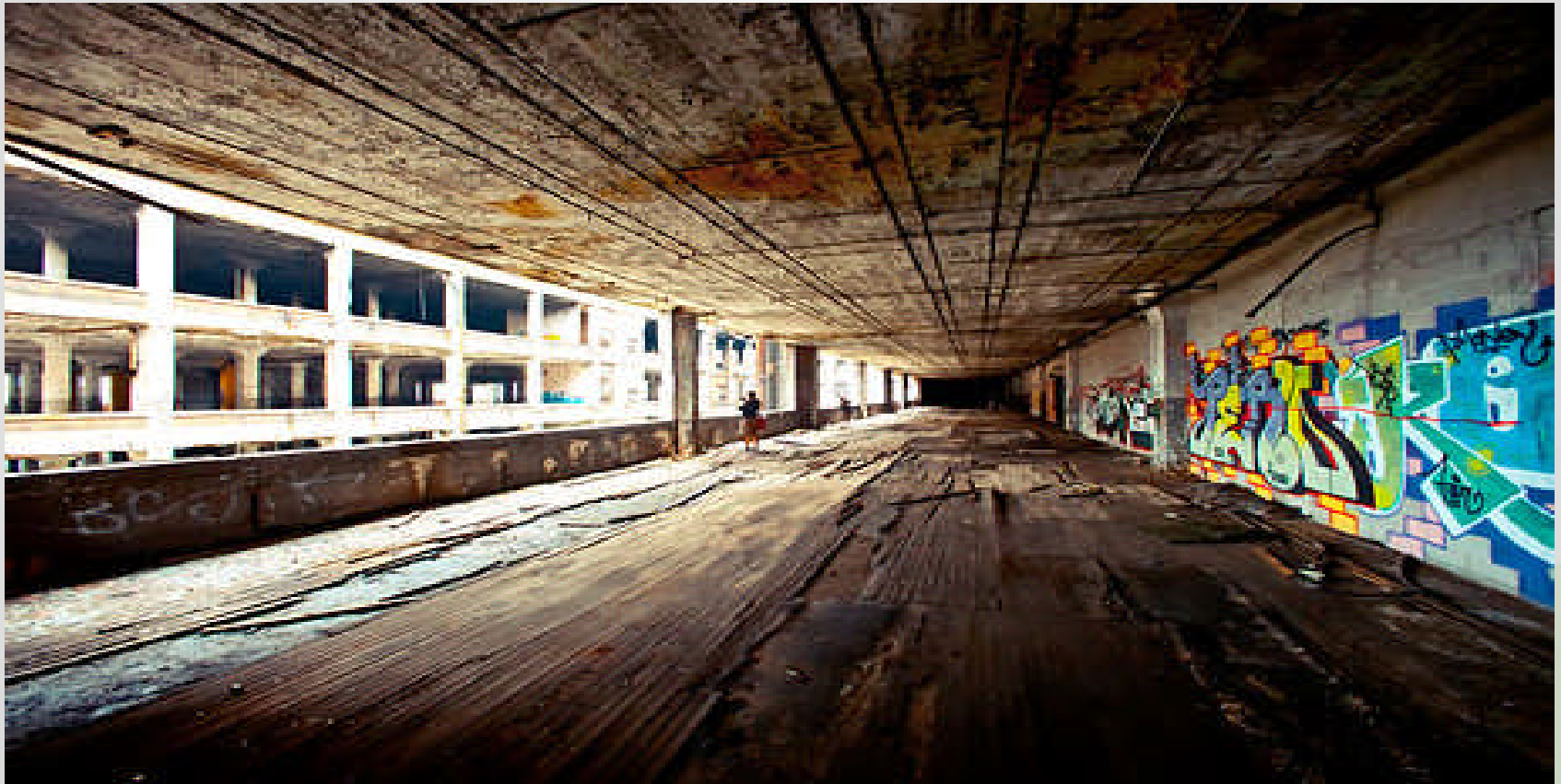
The Economist, October 22, 2011





# Is Detroit the new Brooklyn?

PBS, July 18, 2011



# [www.DataDrivenDetroit.org](http://www.DataDrivenDetroit.org)

Kurt Metzger  
[kurt@DataDrivenDetroit.org](mailto:kurt@DataDrivenDetroit.org)

163 Madison Street  
Detroit, Michigan 48226  
313.887.6501  
313.963.9723 fax